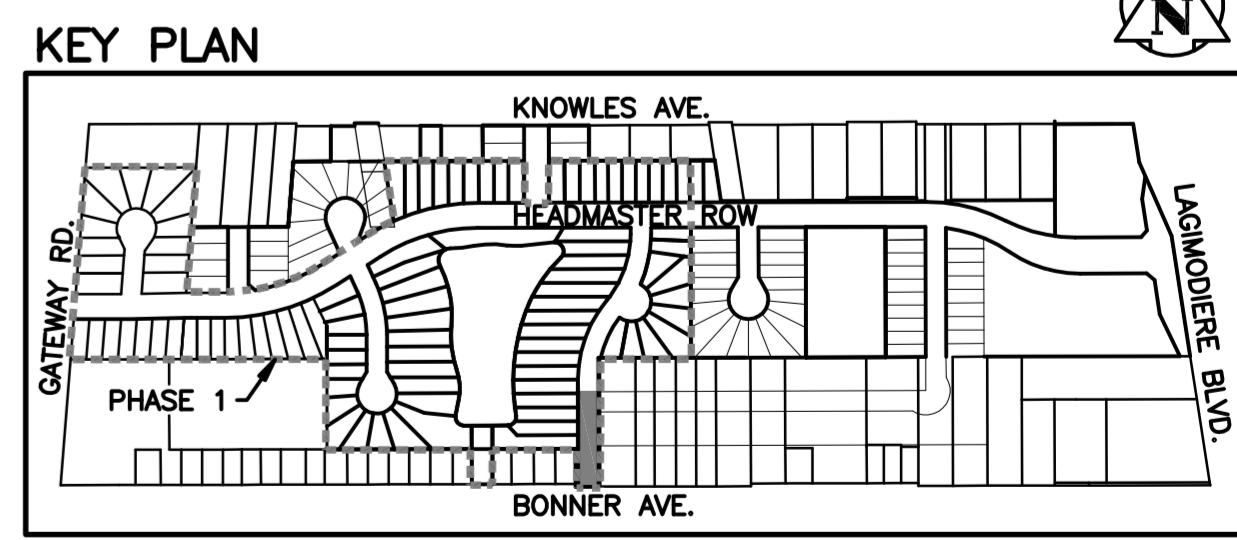


- NOTES:**
1. ALL INTERSECTION RADII TO BE 7.5m AND MODIFIED BARRIER CURB UNLESS NOTED OTHERWISE.
  2. CHAINAGES SHOWN ARE ALONG CENTERLINE OF ROAD.

**METRIC**  
WHOLE NUMBERS INDICATE MILLIMETRES  
DECIMALIZED NUMBERS INDICATE METRES

**WARNING**  
IF POWER EQUIPMENT OR EXPLOSIVES ARE TO BE USED FOR EXCAVATION ON THIS PROJECT THE CONTRACTOR MUST:  
1) NOTIFY THE GAS COMPANY OF THE PROPOSED LOCATION OF EXCAVATION.  
2) TAKE PRECAUTION TO AVOID DAMAGE TO GAS COMPANY INSTALLATIONS.  
SEE PROVINCIAL REGULATION 140/92 FOR DETAILS



**CROSS SECTION OF 18.0m R.O.W.**  
N.T.S.  
86R347 - N.E. Cor. Knowles Ave. & Gateway Rd., Tbt. on top of 0.05m dia. x 2.4m iron pipe, 8m S. of S. wall No.451 Knowles Ave. & 33.4m E. of most Ely. rail of railway tracks on C.P.R. Lac du Bonnet Subd. R.O.W. or 1.1m W. of E.L. of Gateway Rd. & 0.9m S. of N.L. of Knowles Ave.

**APEGM**  
Certificate of Authorization  
Stantec Consulting Ltd.  
No. 1301 Expiry: April 30, 2007

EXISTING	LEGEND-PLAN	PROPOSED	EXISTING	LEGEND-PLAN	PROPOSED	EXISTING	LEGEND-PROFILE	PROPOSED
150 WM	WATERMAIN	150 WM	HYDRO	150 WM	WATERMAIN	150 WM	WATERMAIN	150 WM
Hydrant symbol	HYDRANT	Hydrant symbol	M.T.S.	Hydrant symbol	HYDRANT, VALVE	Hydrant symbol	HYDRANT, VALVE	Hydrant symbol
Valve symbol	VALVE	Valve symbol	CONCRETE	Valve symbol	CONCRETE	Valve symbol	CONCRETE	Valve symbol
300 LDS	LAND DRAINAGE SEWER	300 LDS	ASPHALT	300 LDS	LAND DRAINAGE SEWER	300 LDS	LAND DRAINAGE SEWER	300 LDS
250 WWS	WASTE WATER SEWER	250 WWS	ASPHALT	250 WWS	WASTE WATER SEWER	250 WWS	WASTE WATER SEWER	250 WWS
Manhole symbol	MANHOLE	Manhole symbol	PROPERTY LINE	Manhole symbol	PROPERTY LINE	Manhole symbol	PROPERTY LINE	Manhole symbol
Catch basin symbol	CATCH BASIN	Catch basin symbol	SURVEY BAR	Catch basin symbol	SURVEY BAR	Catch basin symbol	SURVEY BAR	Catch basin symbol
Curved arrow symbol	CURB INLET	Curved arrow symbol	DITCH	Curved arrow symbol	DITCH	Curved arrow symbol	DITCH	Curved arrow symbol
Triangle symbol	JUNCTIONS	Triangle symbol	ELEVATION	Triangle symbol	ELEVATION	Triangle symbol	ELEVATION	Triangle symbol
Culvert symbol	CULVERT	Culvert symbol	31.334	Culvert symbol	CULVERT	Culvert symbol	CULVERT	Culvert symbol
Gas symbol	GAS	Gas symbol		Gas symbol	GAS	Gas symbol	GAS	Gas symbol
Existing line	LEGEND-PLAN	Proposed line	Existing line	LEGEND-PLAN	Proposed line	Existing line	LEGEND-PROFILE	Proposed line

**LOCATION APPROVED UNDERGROUND STRUCTURES**  
SUPV. U/G STRUCTURES COMMITTEE DATE  
NOTE: LOCATION OF UNDERGROUND STRUCTURES AS SHOWN ARE BASED ON THE BEST INFORMATION AVAILABLE BUT NO GUARANTEE IS GIVEN THAT ALL EXISTING UTILITIES ARE SHOWN OR THAT THE GIVEN LOCATIONS ARE EXACT. CONFIRMATION OF EXISTENCE AND EXACT LOCATION OF ALL SERVICES MUST BE OBTAINED FROM THE INDIVIDUAL UTILITIES BEFORE PROCEEDING WITH CONSTRUCTION.

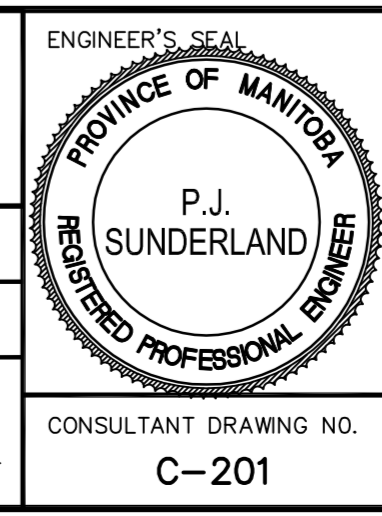
NO.	REVISIONS	DATE	BY
1	ISSUED FOR CITY REVIEW	06.06.30	P.J.S.

**Stantec Consulting Ltd.**  
905 Waverley Street, Winnipeg, Manitoba  
Tel 204-489-5900 Fax 204-453-9012

DESIGNED BY: P.J.S. CHECKED BY: D.P.M.  
DRAWN BY: A.M. APPROVED BY: P.J.S.

HOR. SCALE: 1:500  
VERTICAL: 1:50

RELEASED FOR CONSTRUCTION: DATE



**THE CITY OF WINNIPEG**  
Winnipeg

CITY OF WINNIPEG LOCAL IMPROVEMENT  
**MITCHELSON WAY PAVEMENT**  
EAGLE LAKE COVE TO STA 3+00

SHEET 1 OF 1  
CAD FILE DRAWING NUMBER: 06620C-201.DWG  
CITY DRAWING NUMBER

CONSULTANT DRAWING NO. C-201