

GENERAL NOTES

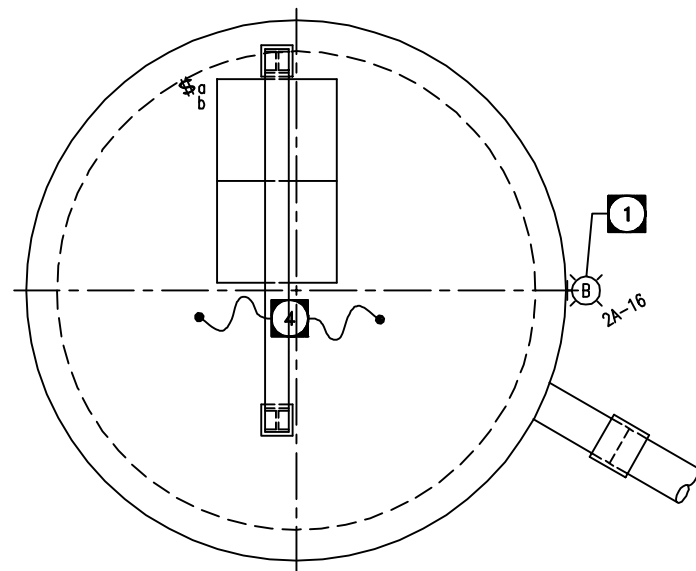
1. CONFIRM ALL ELECTRICAL REQUIREMENTS WITH DRAWINGS AND SPECIFICATIONS. PROVIDE ALL ELECTRICAL CONNECTIONS AS SPECIFIED THEREIN.
2. THE BUILDING BASEPLAN AND LAYOUT SHOWN IS FOR REFERENCE ONLY. EXACT LAYOUT AND DIMENSIONS ARE TO BE SITE CONFIRMED.
3. WIRING AND INSTALLATION METHODS SHALL COMPLY WITH ALL CODES AND STANDARDS TO SUIT THE AREA CLASSIFICATION INDICATED.
4. CIRCUIT NUMBERS SHOWN ARE TO ILLUSTRATE DESIGN INTENT. THE E.C SHALL SITE CONFIRM THE EXACT CIRCUIT NUMBER TO USE AND SHALL PROVIDE BREAKERS TO MATCH EXISTING.
5. PROVIDE COMPLETE DEMOLITION OF EXISTING LIGHTING IN AREAS WHERE NEW LUMINAIRES ARE SHOWN. STRIP BACK AND REMOVE ALL WIRING, CONDUIT, CONTROL, AND ACCESSORIES BACK TO SOURCE PANEL.

SPECIFIC NOTES

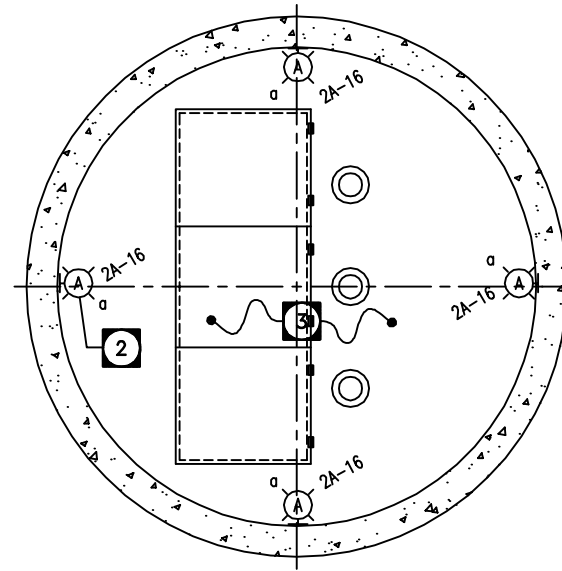
- 1 INTEGRAL PHOTOCELL CONTROL OF LUMINAIRE. MOUNT LUMINAIRE OVER ENTRY DOOR AT 3650mm A.F.F.
- 2 WALL MOUNT LUMINAIRE AT 7' AFF. ADJUST EXACT LOCATIONS ON SITE TO SUIT ELECTRICAL AND MECHANICAL EQUIPMENT LAYOUT. TYPICAL.
- 3 THIS LEVEL/FLOOR IS A HAZARDOUS RATED, CLASS I, DIV 1 AREA. ALL EQUIPMENT, WIRING, AND INSTALLATION SHALL BE SUITABLE FOR THIS ENVIRONMENT, AND SHALL BE CORROSION RESISTANT CATAGORY 2, SECTION 22.
- 4 NON-HAZARDOUS RATED AREA.

LEGEND

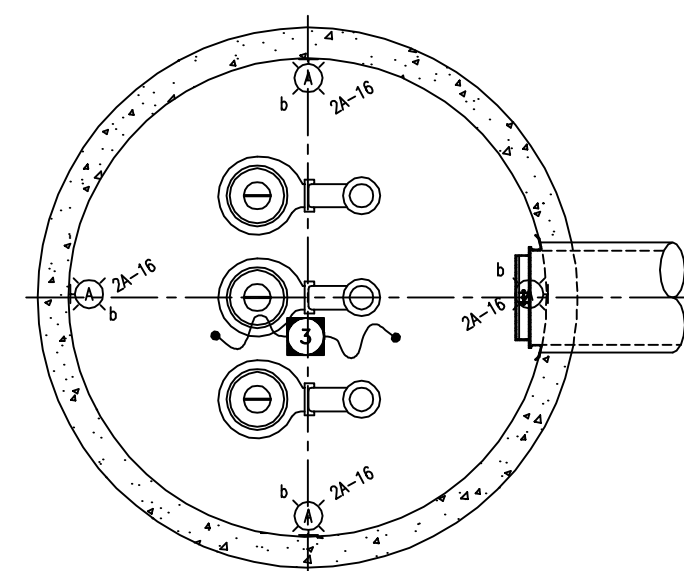
	WALL MOUNTED H.I.D. OR INCANDESCENT FIXTURE
	SINGLE POLE, TWO GANG SWITCH
	DISCONNECT SWITCH
	POWER PANELBOARD
	ELECTRICAL DEVICE (AS INDICATED)
	TRANSFORMER
	MOTOR AND DISCONNECT
	MAGNETIC MOTOR STARTER
	MANUAL MOTOR STARTER



MAIN FLOOR PLAN
SCALE: 1:30



INTERMEDIATE FLOOR
SCALE: 1:30



WET WELL
SCALE: 1:30



B.M. ELEV.	FIELD BOOK #:	CITY OF WINNIPEG WATER AND WASTE ENGINEERING DIVISION	ENGINEER'S SEAL	THE CITY OF WINNIPEG WATER AND WASTE DEPARTMENT
POSTED TO LBIS		DESIGNED BY: DEB	CHECKED BY: EMR	ORIGINAL SIGNED BY ED RYCZKOWSKI 06/05/04
		DRAWN BY: DEB	APPROVED BY: EMR	
		HOR. SCALE: AS SHOWN	RELEASED FOR CONSTRUCTION	INSTALLATION OF SUBMERSIBLE PUMPING UNITS AND UPGRADES TO THE BOURNAIS WASTEWATER PUMPING STATION LIGHTING PLAN
1 ISSUED FOR OWNER REVIEW	09/14/05 EMR	DATE: 2006 05 04	DATE:	
NO. REVISIONS	DATE BY			BID OPPORTUNITY: 431-2006 FILENAME: E1.dwg PLOT DATE: 2006 05 04
				SHEET 4 OF 7 CITY DRAWING NUMBER 05803