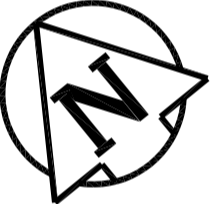
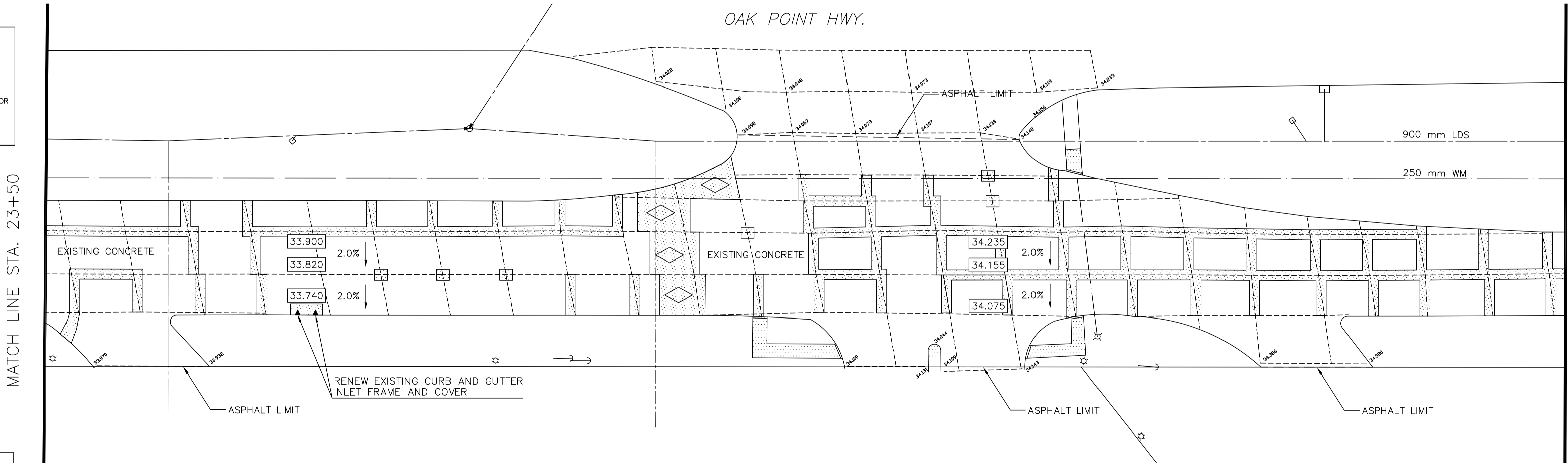


ALL CHAINAGES ARE MEASURED ALONG THE EAST GUTTER LINE OF OAK POINT HIGHWAY

- CONSTRUCTION NOTES**
- 1) CURB REPLACEMENT AS DIRECTED BY THE CONTRACT ADMINISTRATOR
 - 2) ALL STREET RADIUS CURBS UNDER 15M RADIUS SHALL BE REPLACED AS MODIFIED BARRIER CURB OR AS DIRECTED BY THE CONTRACT ADMINISTRATOR
 - 3) PAVEMENT REPAIRS SHOWN ARE ONLY A REPRESENTATIVE SAMPLE OF THE TENDERED QUANTITIES



- WARNING**
- IF POWER EQUIPMENT OR EXPLOSIVES ARE TO BE USED FOR EXCAVATION ON THIS PROJECT THE CONTRACTOR MUST:
- 1) OBTAIN CLEARANCE FROM THE GAS UTILITY PRIOR TO EXCAVATION.
 - 2) TAKE PRECAUTION TO AVOID DAMAGE TO GAS UTILITY INSTALLATIONS.
- SEE PROVINCIAL REGULATION 210/72 FOR DETAILS

METRIC
WHOLE NUMBERS INDICATE MILLIMETRES
DECIMALIZED NUMBERS INDICATE METRES

BID OPP.# 430-2006

| | | | | | |
|-----------|---------------------|-----------|------------------|-----------|---------------|
| 150 mm WM | WATERMAIN | 150 mm WM | HYDRO | 150 mm WM | WATERMAIN |
| ⊕ | HYDRANT VALVE | ⊕ | MTS | + | HYDRANT VALVE |
| ⊗ | LAND DRAINAGE SEWER | ⊗ | CONCRETE S/W | + | SEWER |
| ⊙ | WASTE WATER SEWER | ⊙ | LIMIT OF ASPHALT | + | SEWER |
| ○ | MANHOLE | ○ | CURB RENEWAL | + | SEWER |
| □ | CATCH BASIN | □ | CONCRETE REPAIRS | + | SEWER |
| △ | CURB INLET | △ | ELEVATIONS | + | SEWER |
| ☆ | WOOD POLES | ☆ | PROPERTY LINE | + | SEWER |
| ○ | LAMP STANDARD | ○ | SURVEY BAR | + | SEWER |
| ○ | GAS | ○ | CURB STOP | + | SEWER |
| ○ | LEGEND - PLAN | ○ | RAMP CURB | + | SEWER |
| ○ | PROPOSED | ○ | EXISTING | + | SEWER |

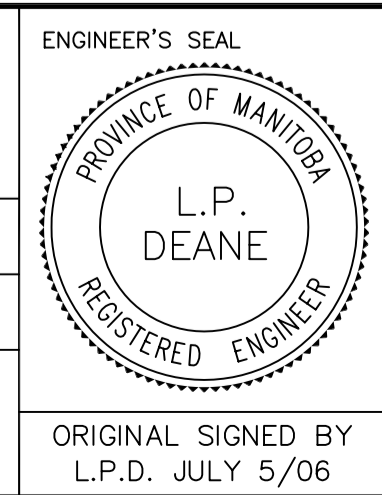
LOCATION APPROVED UNDERGROUND STRUCTURES

DESIGNED BY: G.C./R.W.
CHECKED BY: B.K./G.C.
DRAWN BY: B.B./R.W./G.C.
APPROVED BY: L.P.D.

DATE: 12/04/06

NOTE:
LOCATION OF UNDERGROUND STRUCTURES AS SHOWN ARE BASED ON THE BEST INFORMATION AVAILABLE, BUT NO GUARANTEE IS GIVEN THAT ALL EXISTING UTILITIES ARE SHOWN OR THAT THE GIVEN LOCATIONS ARE EXACT. CONFIRMATION OF EXISTENCE AND EXACT LOCATION OF ALL SERVICES MUST BE OBTAINED FROM THE INDIVIDUAL UTILITIES BEFORE PROCEEDING WITH CONSTRUCTION.

ENGINEERING DIVISION
TECHNOLOGY SERVICES BRANCH
106 - 1155 PACIFIC AVE



THE CITY OF WINNIPEG
PUBLIC WORKS DEPARTMENT

OAK POINT HIGHWAY / KING EDWARD STREET (SOUTHBOUND)
FROM APPROXIMATELY 300 METRES SOUTH OF EAGLE DRIVE
TO APPROXIMATELY 60 METRES SOUTH OF HYDE AVENUE

ASPHALT OVERLAY AND ASSOCIATED WORKS FROM STA: 23+50 TO STA: 25+00

CITY DRAWING NUMBER SE-05-36
SHEET 7 OF 9

7