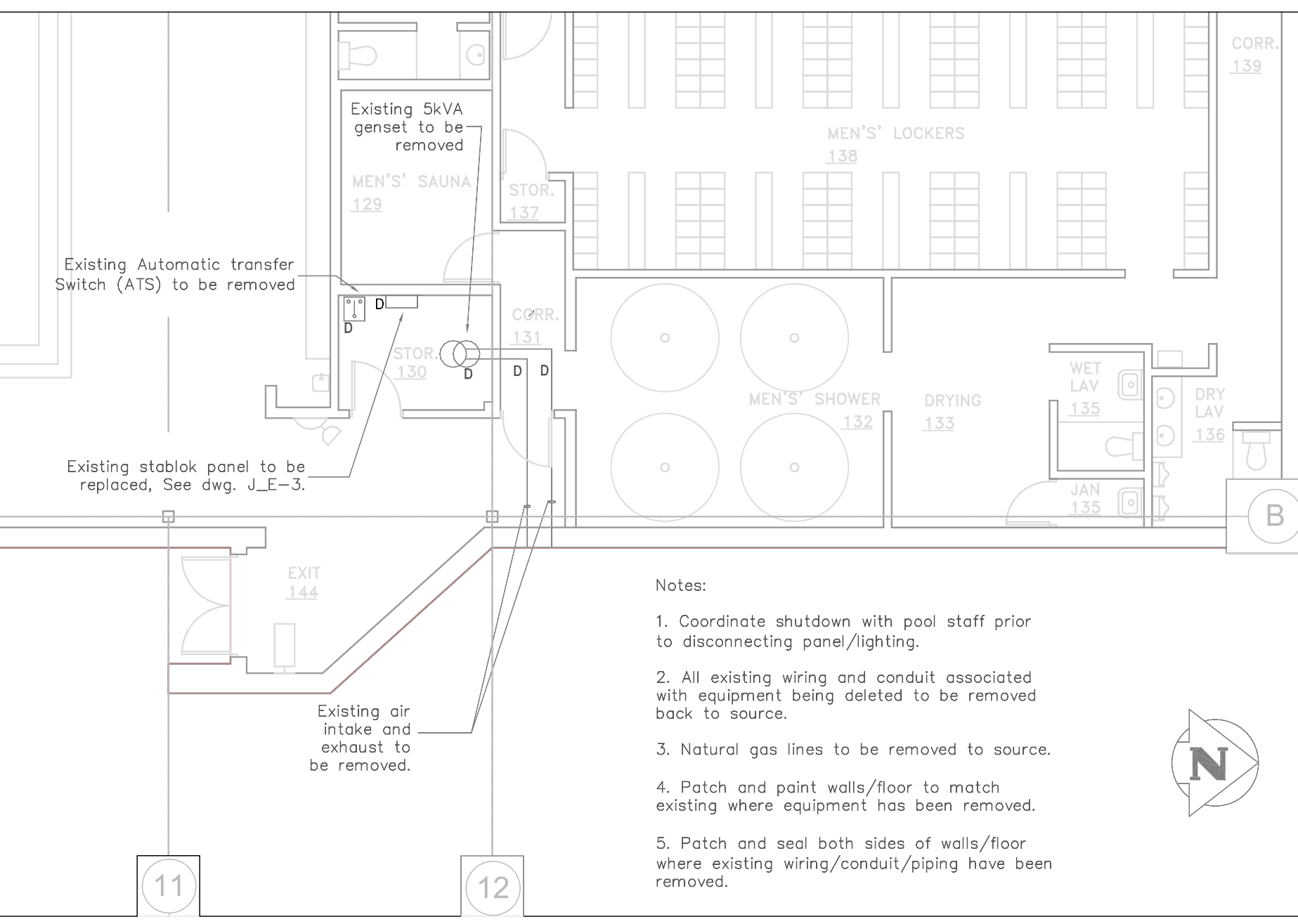
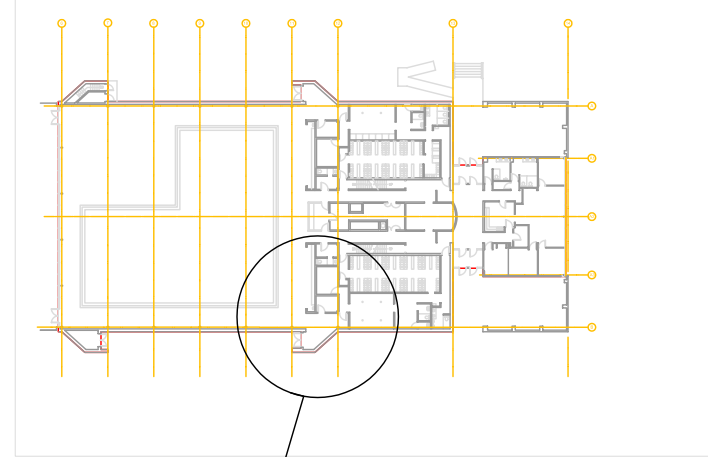


DESCRIPTION OF WORK

- The Contractor will be responsible for coordinating the delivery of materials to site, unloading the materials at site, and arranging the storage and insurance of such materials upon arrival.
- New emergency fixtures will be installed in designated areas to improve emergency light levels:
  - Pool&Deck area (140),
  - Men and women washrooms (room 104&105),
  - Basement (crawl space, mechanical room -05, electrical room (06), rooms- 01,03,04).
- Provide and connect UPS with existing power net, as shown on Detail 2, dwg. J\_E-1.
- Provide and connect Emergency Panelboard E100 to the UPS as shown on Detail 1, dwg. J\_E-1.
- Relocate two GFCI ccts from old emergency panel to existing non-emergency panel 600.

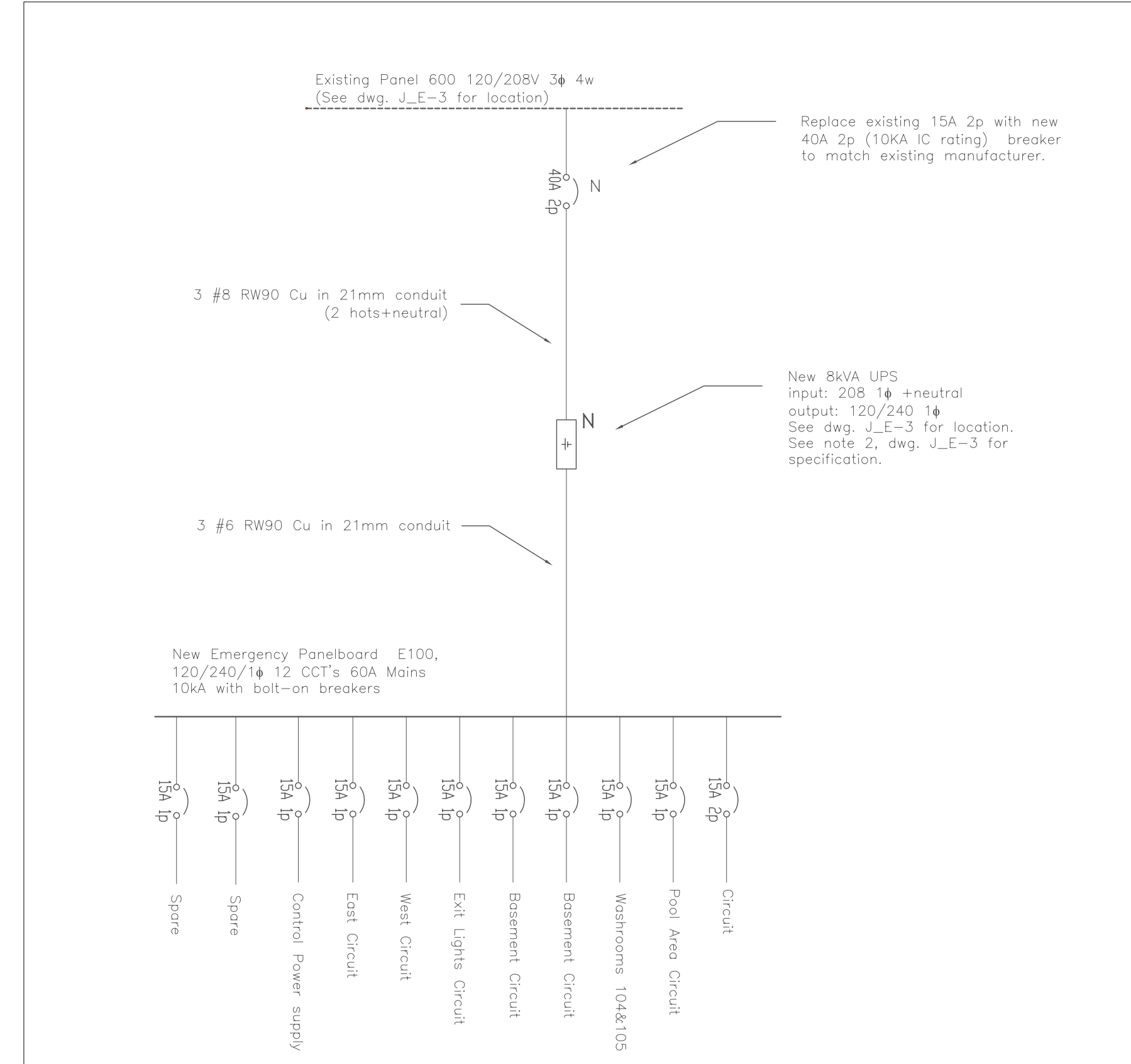
DEMOLITION

- Remove all existing electrical equipment, wiring, fixtures and non electrical systems, in those portions of the existing building which are being made redundant by this work being carried out.
- All removed equipment designated to be saved by City is to be turned over to City's designated area.
- Patch, paint and repair walls, floors and ceilings in existing areas from which removal of equipment or supporting structure has taken place to match existing.

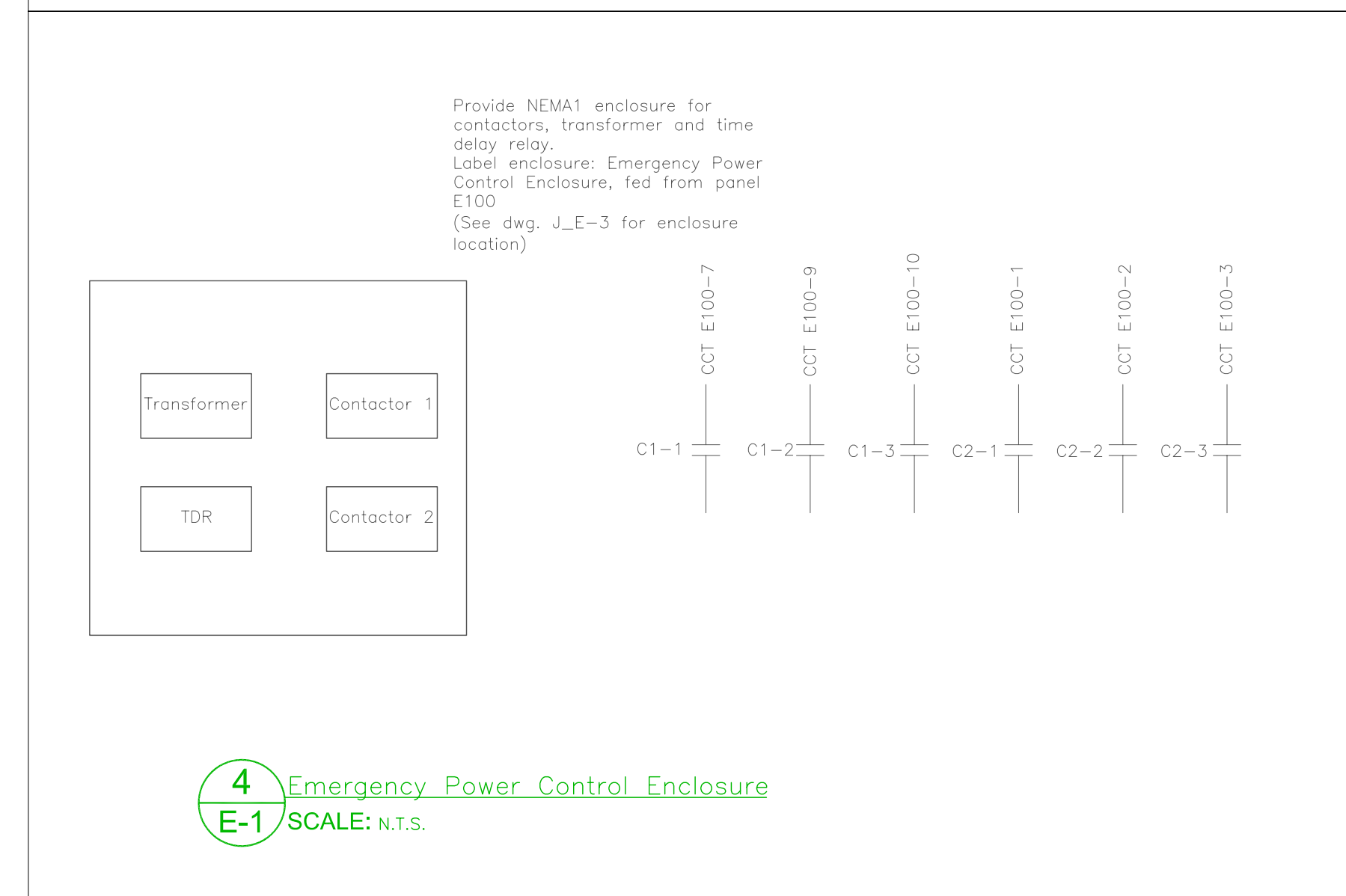


1 Demolition Plan Main Floor  
E-1 SCALE: 1:100

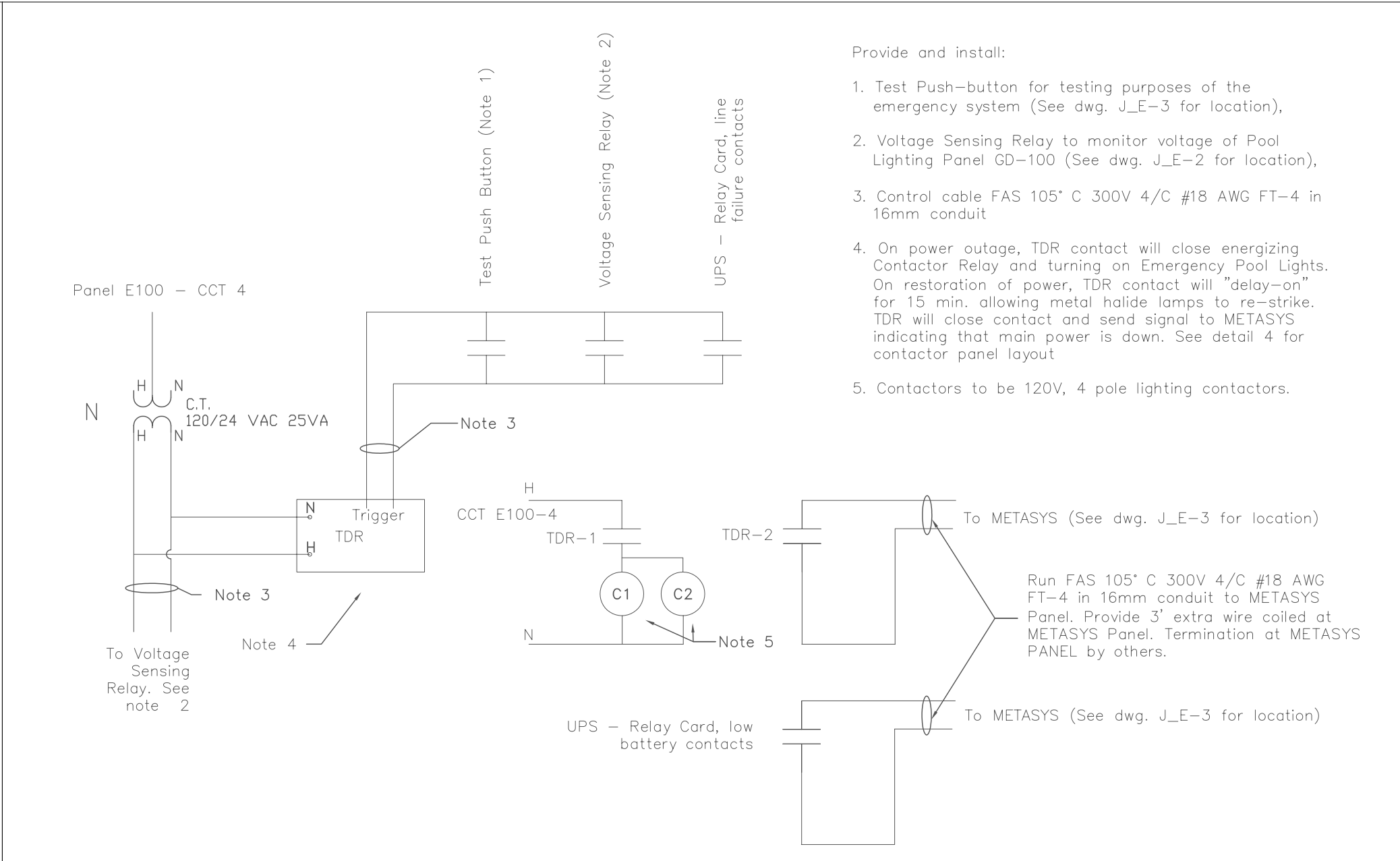
SYMBOL SCHEDULE	
[Symbol]	Surface Luminaire 1x4
[Symbol]	Surface Luminaire 2x2
[Symbol]	Recessed Luminaire 1x4
[Symbol]	Remote Double Head Fixture
[Symbol]	Remote Single Head Fixture
[Symbol]	UPS
[Symbol]	Panelboard Surface Mount
[Symbol]	Generator
[Symbol]	Junction Box
[Symbol]	Circuit Breaker
[Symbol]	Contactor
[Symbol]	Transformer
[Symbol]	Automatic Transfer Switch
[Symbol]	Existing to Remain
[Symbol]	New
[Symbol]	Deleted



2 Emergency Power System Distribution  
E-1 SCALE: N.T.S.



4 Emergency Power Control Enclosure  
E-1 SCALE: N.T.S.



3 Emergency Lighting Control  
E-1 SCALE: N.T.S.

Emergency Panel E100 120/240/1φ 60A Mains 10kA									
Description	CCT	Pwr. (W)	Brk. (A)	L1	L2	Brk. (A)	Pwr. (W)	CCT	Description
Basement Light	1	450	15	+	+	15	420	7	Pool Lights
Basement Light	2	550	15	+	+	15	40	8	Exit Lights
Lobby washrooms Lights	3	70	15	+	+	15	1000	9	Main Floor Eyeballs Light
Control Power Supply	4	30	15	+	+	15	1000	10	
Main Floor East Lights	5	350	15	+	+	15		11	Spare
Main Floor West Lights	6	350	15	+	+	15		12	Spare
	L1	2290				L2	1970		

5 Emergency Panelboard Schedule  
E-1 SCALE: N.T.S.

Rev. \_\_\_\_\_ By: \_\_\_\_\_ Date: \_\_\_\_\_

Rev. \_\_\_\_\_ By: \_\_\_\_\_ Date: \_\_\_\_\_

Rev. \_\_\_\_\_ By: \_\_\_\_\_ Date: \_\_\_\_\_

**THE CITY OF WINNIPEG**  
PUBLIC WORKS DEPARTMENT  
BUILDING SERVICES DIVISION  
100 MAIN STREET, MAIN FLOOR  
WPG, MB. R3C 1A4  
(204) 986-7266

PROJECT: Emergency System Upgrade  
St. James Centennial Pool, 644 Parkdale

SHEET TITLE: Demolition & Details

ENG. STAMP: PROVINCE OF MANITOBA  
G.W. ALCOCK  
REGISTERED PROFESSIONAL ENGINEER  
30-06-2006

PROJECT NO: 404-2006

DRAWN BY: VC CHECKED BY: GWA APPROVED BY: GWA

SCALE: 1:100 DATE: 30 June, 2006

DWG. NO: J\_E-1 REV: 0