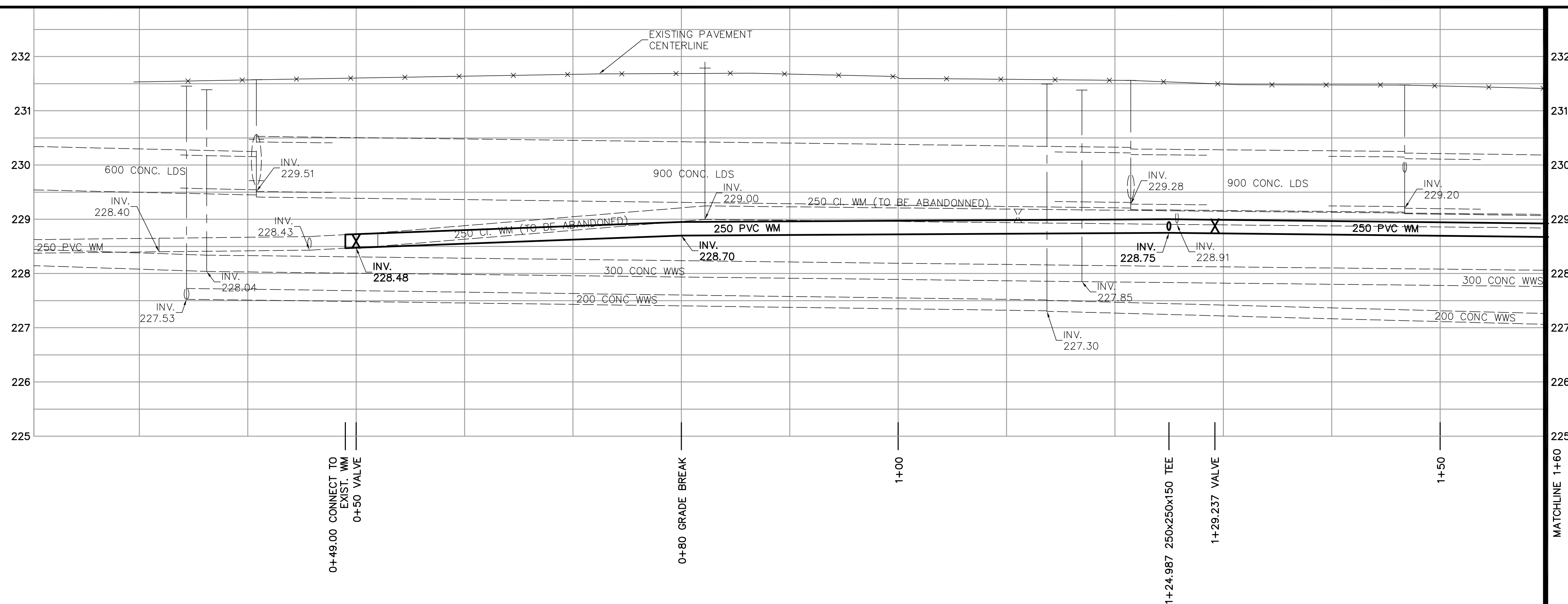
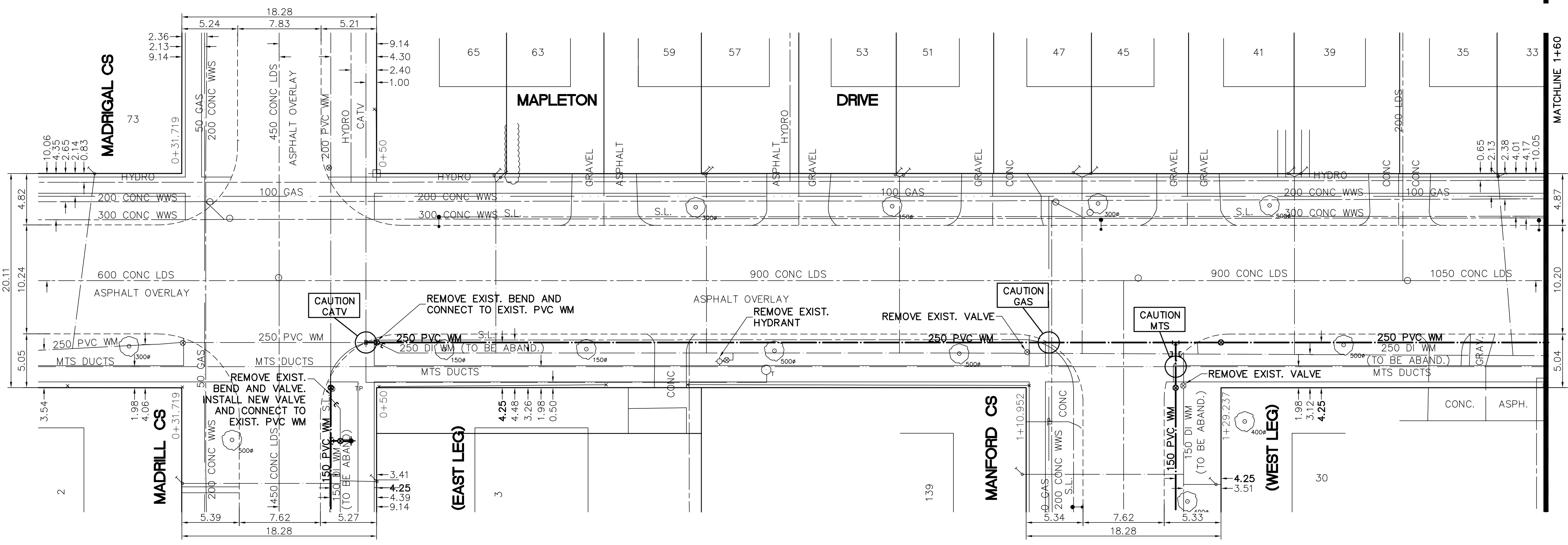


SHEET: COW-WMD-A1 (11/2002) FILE NAME: L:\Work\10000\W2736\02a-cad\Wm\Wm\W2736-C20.dwg LAYOUT NAME: 92736-C20 PLOTTED BY: michael.horvath DATE: 16/06/2006 4:47pm



- CONSTRUCTION NOTES**
1. EXPOSE WATERMAIN CONNECTIONS AND CONFIRM INVERTS PRIOR TO CONSTRUCTION.
 2. INSTALL WATERMAIN BY TRENCHLESS METHODS.
 3. ALL MATERIALS SHALL CONFORM TO THE CITY OF WINNIPEG STANDARD CONSTRUCTION SPECIFICATIONS.
 4. MINIMUM COVER TO TOP OF PROPOSED WATERMAIN SHALL BE 2.5m FROM STREET CENTERLINE.
 5. INSTALL ALL HYDRANTS WITH FLANGE ELEVATION 50mm - 150mm ABOVE FINISHED GRADE.
 6. REPLACE ALL EXISTING LEAD SERVICES FROM THE PROPOSED WATERMAIN TO PROPERTY LINE.
 7. NOTIFY ALL AFFECTED RESIDENTS AND BUSINESSES 24 HOURS IN ADVANCE OF ANY WATER SHUTDOWN OR DISRUPTION OF SERVICE.
 8. LOCATION OF WATER SERVICES SHOWN ON DRAWINGS ARE APPROXIMATE. THE CONTRACTOR SHALL FIELD LOCATE ALL WATER SERVICES PRIOR TO CONSTRUCTION.
 9. ALL VALVES SHALL BE BLACK TOP (CLOCKWISE TO CLOSE).
 10. BACKFILL UNDER OR WITHIN 1.0m OF PAVEMENTS, INCLUDING SIDEWALKS SHALL BE CLASS 3 BACKFILL EXCEPT AS NOTED. BACKFILL IN BOULEVARDS SHALL BE CLASS 5 BACKFILL.
 11. CHAINAGE MEASURED ALONG SOUTH PROPERTY LINE.



SEE DRAWING D-9049

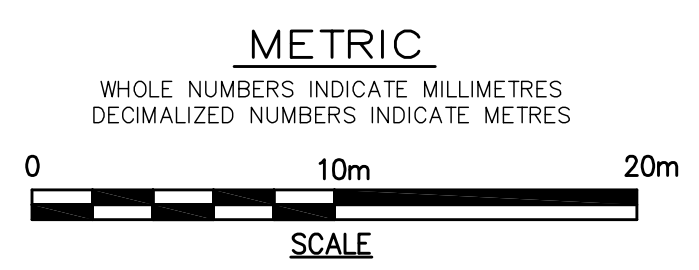
SEE DRAWING D-9047

SEE DRAWING D-9045

ADDRESS	NATURE OF SERVICE	SIZE	MATERIAL	DISTANCE SC TO PROPERTY	POSITION OF SC (curb stop)	POSITION OF CC (corp)	COMMENTS:
30 MAPLETON DR	RESIDENTIAL	19 mm	COPPER	0.3 m	Long: 9.3 m S of EL MAPLETON BLDG Short: 3.4 m N of EL BLDG	Long: of S/C Short: of S/C	SINGLE SERV TO S/C THEN BRANCH WITH 35 MAPLETON
33 MAPLETON DR	RESIDENTIAL	25 mm	COPPER	0.3 m	Long: 9.1 m W of EL PROPERTY #33 Short: 5.8 m W of EL BLDG	Long: 1.5 m E of S/C Short: of S/C	BRANCH SERV WITH 41
35 MAPLETON DR	RESIDENTIAL	25 mm	COPPER	0.2 m	Long: 9.1 m W of EL BLDG Short: 5.8 m W of EL BLDG	Long: of S/C Short: of S/C	BRANCH SERV WITH 39
39 MAPLETON DR	RESIDENTIAL	19 mm	COPPER	0.0 m	Long: 7.5 m E of EL MANFORD BLDG Short: 6.5 m W of EL BLDG	Long: of S/C Short: of S/C	BRANCH SERV WITH 47 JUNE/02 RENEWED SERVICE BOX
41 MAPLETON DR	RESIDENTIAL	25 mm	COPPER	0.0 m	Long: 6.7 m E of EL MANFORD BLDG Short: 6.3 m E of WL BLDG	Long: of S/C Short: of S/C	BRANCH SERV WITH 45
45 MAPLETON DR	RESIDENTIAL	25 mm	COPPER	0.0 m	Long: 4.6 m E of WL MANFORD BLDG Short: 4.5 m E of WL BLDG	Long: of S/C Short: of S/C	
47 MAPLETON DR	RESIDENTIAL	19 mm	COPPER	0.0 m	Long: 11.7 m W of WL MANFORD BLDG Short: 5.5 m W of EL BLDG	Long: of S/C Short: of S/C	

ADDRESS	NATURE OF SERVICE	SIZE	MATERIAL	DISTANCE SC TO PROPERTY	POSITION OF SC (curb stop)	POSITION OF CC (corp)	COMMENTS:
51 MAPLETON DR	RESIDENTIAL	19 mm	COPPER	0.2 m	Long: 11.7 m W of WL MANFORD BLDG Short: 5.5 m W of EL BLDG	Long: of S/C Short: of S/C	BRANCH SERV WITH 53
53 MAPLETON DR	RESIDENTIAL	19 mm	COPPER	0.0 m	Long: 12.3 m W of WL MANFORD BLDG Short: 6.1 m E of WL BLDG	Long: of S/C Short: of S/C	BRANCH SERV WITH 51
57 MAPLETON DR	RESIDENTIAL	25 mm	COPPER	0.0 m	Long: 30.0 m W of WL MANFORD BLDG Short: 5.4 m W of EL BLDG	Long: of S/C Short: of S/C	BRANCH SERV WITH 59
59 MAPLETON DR	RESIDENTIAL	25 mm	COPPER	0.0 m	Long: 30.3 m W of WL MANFORD BLDG Short: 5.7 m W of EL BLDG	Long: of S/C Short: of S/C	BRANCH SERV WITH 57
63 MAPLETON DR	RESIDENTIAL	19 mm	COPPER	0.3 m	Long: 11.6 m E of EL MADRIGAL BLDG Short: 5.7 m E of WL BLDG	Long: of S/C Short: of S/C	BRANCH SERV WITH 65
65 MAPLETON DR	RESIDENTIAL	19 mm	COPPER	0.3 m	Long: 11.0 m E of EL MADRIGAL BLDG Short: 5.1 m E of WL BLDG	Long: of S/C Short: of S/C	BRANCH SERV WITH 63

APEGM
 Certificate of Authorization
 Earth Tech Canada Inc.
 No. 730 Expiry: April 30, 2007



EXISTING	LEGEND - PLAN	PROPOSED	EXISTING	LEGEND - PLAN	PROPOSED	EXISTING	LEGEND - PROFILE	PROPOSED
150 mm W.M.	WATERMAIN	150 mm W.M.	Hydro	HYDRANT	Hydro	150 mm W.M.	WATERMAIN	150 mm W.M.
300mm L.D.S.	LAND DRAINAGE SEWER	300mm L.D.S.	CONCRETE	CONCRETE	CONCRETE	300mm L.D.S.	LAND DRAINAGE SEWER	300mm L.D.S.
250mm W.W.S.	WASTE WATER SEWER	250mm W.W.S.	ASPHALT	ASPHALT	ASPHALT	250mm W.W.S.	WASTE WATER SEWER	250mm W.W.S.
Manhole	MANHOLE	Manhole	PROPERTY LINE	PROPERTY LINE	PROPERTY LINE	Manhole	PROPERTY LINE	PROPERTY LINE
Catch Basin	CATCH BASIN	Catch Basin	SURVEY BAR	SURVEY BAR	SURVEY BAR	Catch Basin	SURVEY BAR	SURVEY BAR
Curb Inlet	CURB INLET	Curb Inlet	CURB STOP	CURB STOP	CURB STOP	Curb Inlet	CURB STOP	CURB STOP
Junctions	JUNCTIONS	Junctions	TREE	TREE	TREE	Junctions	TREE	TREE
Culvert	CULVERT	Culvert	ANODE	ANODE	ANODE	Culvert	ANODE	ANODE
Gas	GAS	Gas	CONCRETE SIDEWALK	CONCRETE SIDEWALK	CONCRETE SIDEWALK	Gas	CONCRETE SIDEWALK	CONCRETE SIDEWALK
			FENCE	FENCE	FENCE		FENCE	FENCE

LOCATION APPROVED UNDERGROUND STRUCTURES

SUPV. U/G STRUCTURES COMMITTEE DATE: _____

NOTE:
 LOCATION OF UNDERGROUND STRUCTURES AS SHOWN ARE BASED ON THE BEST INFORMATION AVAILABLE BUT NO GUARANTEE IS GIVEN THAT ALL EXISTING UTILITIES ARE SHOWN OR THAT THE GIVEN LOCATIONS ARE EXACT. CONFIRMATION OF EXISTENCE AND EXACT LOCATION OF ALL SERVICES MUST BE OBTAINED FROM THE INDIVIDUAL UTILITIES BEFORE PROCEEDING WITH CONSTRUCTION.

EARTH TECH
 A tyco INTERNATIONAL LTD. COMPANY
 Earth Tech (Canada) Inc. Winnipeg, Manitoba 204.477.5381

DESIGNED BY: GDL, GSK
 CHECKED BY: GSK

DRAWN BY: MAF
 APPROVED BY: KWF

HOR. SCALE: 1:250
 VERTICAL SCALE: 1:50

RELEASSED FOR CONSTRUCTION BY: K. ZUREK

NO. REVISIONS: 0
 DATE: 16/06/2004
 BY: GSK

NO. REVISIONS: A
 DATE: 14/06/2006
 BY: GSK

ENGINEER'S SEAL
 PROVINCE OF MANITOBA
 ORIGINAL SIGNED BY
 K.W. FITCHETT
 16/06/2006
 REGISTERED PROFESSIONAL ENGINEER

THE CITY OF WINNIPEG
 Winnipeg WATER AND WASTE DEPARTMENT

2006 WATERMAIN RENEWALS CONTRACT 19

MAPLETON DRIVE
 MADRILL CLOSE TO SHEPPARD STREET
 MADRILL CLOSE (EAST LEG) TO STA. 1+60

SHEET OF 12 14
 CITY DRAWING NUMBER D-9048

CONSULTANT DRAWING NO. 92736-C20