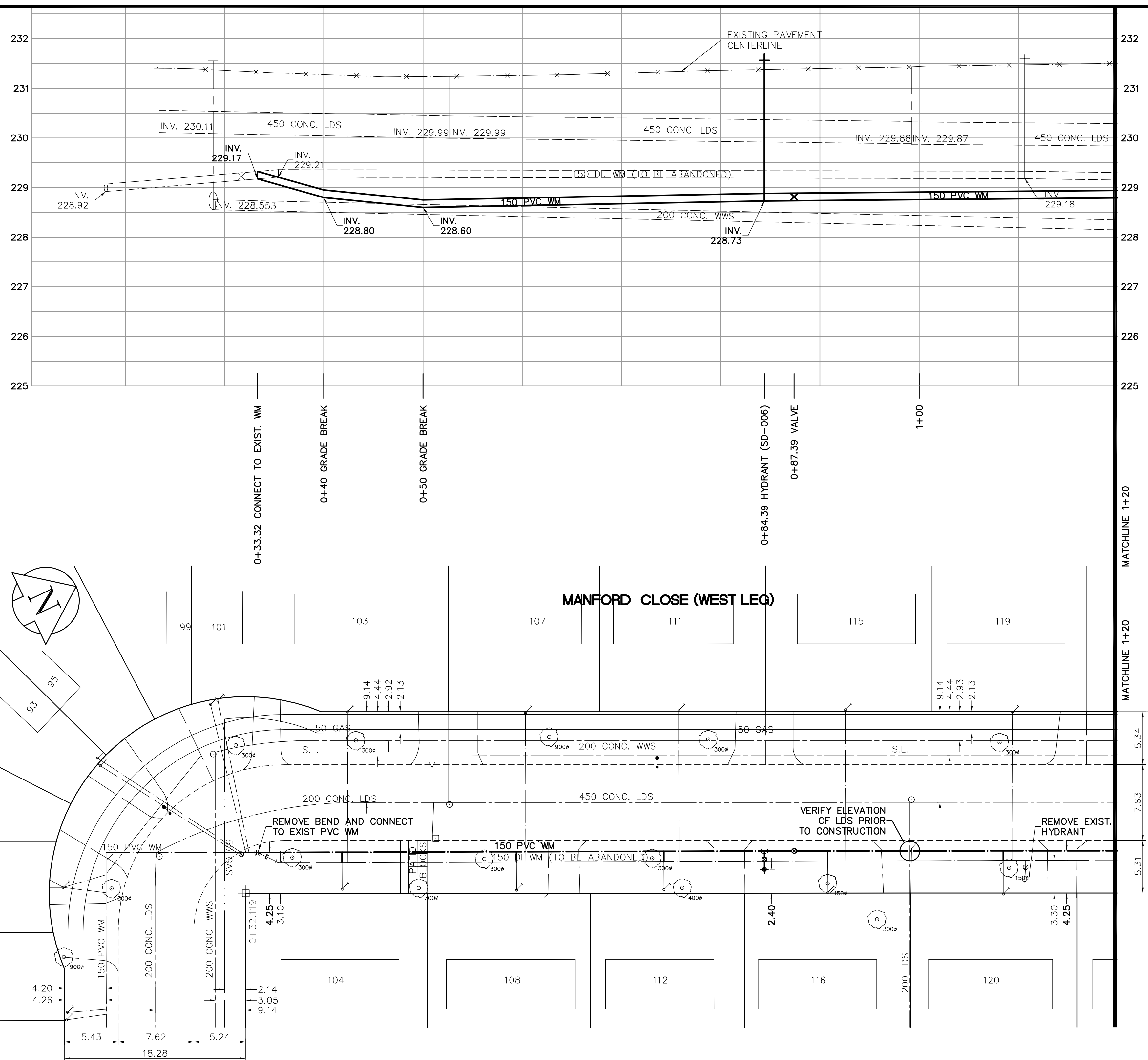
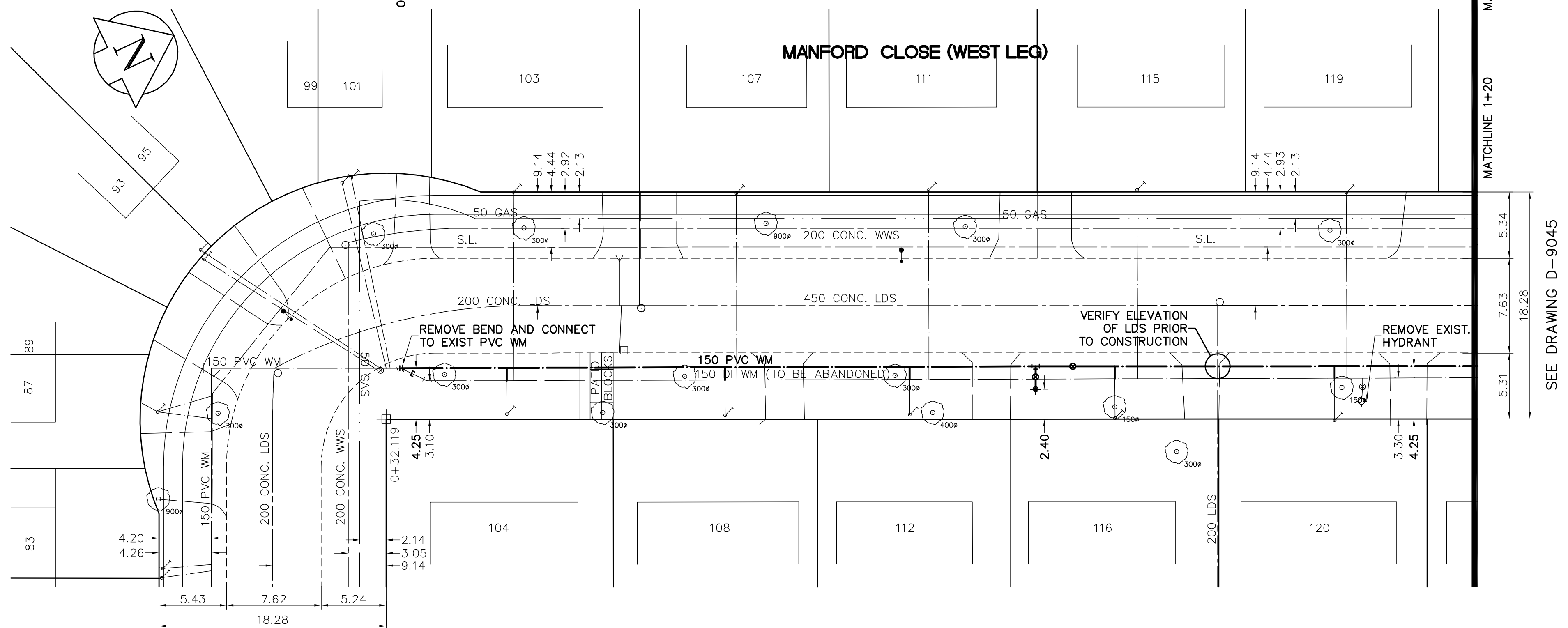


SHEET: COW-WM-A1 (11/2002) FILE NAME: L:\work\10000\102736\102736-CAD\Man\West\102736-C16.dwg LAYOUT NAME: 92736-C16 PLOTTED BY: michael.robertson Jan 16, 2006 - 4:44pm

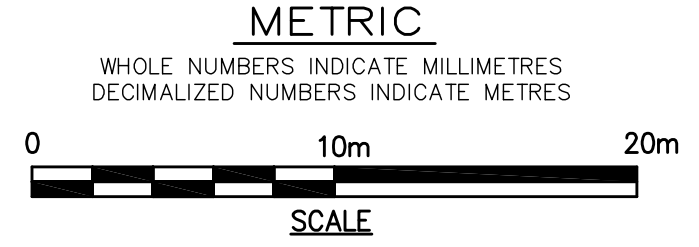


- CONSTRUCTION NOTES**
1. EXPOSE WATERMAIN CONNECTIONS AND CONFIRM INVERTS PRIOR TO CONSTRUCTION.
  2. INSTALL WATERMAIN BY TRENCHLESS METHODS.
  3. ALL MATERIALS SHALL CONFORM TO THE CITY OF WINNIPEG STANDARD CONSTRUCTION SPECIFICATIONS.
  4. MINIMUM COVER TO TOP OF PROPOSED WATERMAIN SHALL BE 2.5m FROM STREET CENTERLINE.
  5. INSTALL ALL HYDRANTS WITH FLANGE ELEVATION 50mm - 150mm ABOVE FINISHED GRADE.
  6. REPLACE ALL EXISTING LEAD SERVICES FROM THE PROPOSED WATERMAIN TO PROPERTY LINE.
  7. NOTIFY ALL AFFECTED RESIDENTS AND BUSINESSES 24 HOURS IN ADVANCE OF ANY WATER SHUTDOWN OR DISRUPTION OF SERVICE.
  8. LOCATION OF WATER SERVICES SHOWN ON DRAWINGS ARE APPROXIMATE. THE CONTRACTOR SHALL FIELD LOCATE ALL WATER SERVICES PRIOR TO CONSTRUCTION.
  9. ALL VALVES SHALL BE BLACK TOP (CLOCKWISE TO CLOSE).
  10. BACKFILL UNDER OR WITHIN 1.0m OF PAVEMENTS, INCLUDING SIDEWALKS SHALL BE CLASS 3 BACKFILL EXCEPT AS NOTED. BACKFILL IN BOULEVARDS SHALL BE CLASS 5 BACKFILL.
  11. CHAINAGE MEASURED ALONG EAST PROPERTY LINE.



ADDRESS	NATURE OF SERVICE	SIZE	MATERIAL	DISTANCE SC TO PROPERTY	POSITION OF SC (curb stop)	POSITION OF CC (corp)	COMMENTS:
111	MANFORD CL RESIDENTIAL	19 mm	COPPER	0.2 m	Long: 32.0 m S of NL BLDG Short: 5.6 m S of NL BLDG	Long: of MAPLETON Short: of S/C	
112	MANFORD CL RESIDENTIAL	19 mm	COPPER	0.4 m	Long: 33.1 m S of 1ST HYDRANT Short: 5.1 m S of NL BLDG	Long: of MAPLETON Short: of S/C	
115	MANFORD CL RESIDENTIAL	19 mm	COPPER	0.2 m	Long: 15.1 m S of 1ST HYDRANT Short: 5.1 m N of SL BLDG	Long: of MAPLETON Short: of S/C	
116	MANFORD CL RESIDENTIAL	19 mm	COPPER	0.1 m	Long: 16.4 m S of 1ST HYDRANT Short: 4.8 m S of NL BLDG	Long: of MAPLETON Short: of S/C	
119	MANFORD CL RESIDENTIAL	19 mm	COPPER	0.2 m	Long: 23.3 m S of 1ST HYDRANT Short: 3.8 m S of NL BLDG	Long: of MAPLETON Short: of S/C	
120	MANFORD CL RESIDENTIAL	19 mm	COPPER	0.3 m	Long: 1.2 m N of 1ST HYDRANT Short: 0.4 m S of NL BLDG	Long: of MAPLETON Short: of S/C	

ADDRESS	NATURE OF SERVICE	SIZE	MATERIAL	DISTANCE SC TO PROPERTY	POSITION OF SC (curb stop)	POSITION OF CC (corp)	COMMENTS:
99	MANFORD CL RESIDENTIAL	19 mm	COPPER	0.0 m	Long: 3.7 m S of NL MANFORD Short: 4.3 m S of NL BLDG	Long: of NL MANFORD Short: of S/C	7.3 TO SIDEWALK
101	MANFORD CL RESIDENTIAL	19 mm	COPPER	0.0 m	Long: 3.5 m S of NL MANFORD Short: 2.9 m S of NL BLDG	Long: of NL MANFORD Short: of S/C	7.5 TO SIDEWALK
103	MANFORD CL RESIDENTIAL	19 mm	COPPER	0.1 m	Long: 10.4 m N of NL MANFORD Short: 5.4 m N of SL BLDG	Long: of NL MANFORD Short: of S/C	
104	MANFORD CL RESIDENTIAL	19 mm	COPPER	0.4 m	Long: 9.7 m N of NL MANFORD Short: 6.1 m N of SL BLDG	Long: of NL MANFORD Short: of S/C	
107	MANFORD CL RESIDENTIAL	19 mm	COPPER	0.0 m	Long: 28.2 m N of NL MANFORD Short: 3.8 m N of SL BLDG	Long: of NL MANFORD Short: of S/C	
108	MANFORD CL RESIDENTIAL	19 mm	COPPER	0.0 m	Long: 3.0 m S of S Short: 3.0 m S of NL BLDG	Long: of S Short: of S/C	



EXISTING	LEGEND - PLAN	PROPOSED	EXISTING	LEGEND - PROFILE	PROPOSED
	WATERMAIN			WATERMAIN	
	HYDRANT			TELEPHONE	
	VALVE			CONCRETE	
	LAND DRAINAGE SEWER			ASPHALT	
	WASTEWATER SEWER			PROPERTY LINE	
	MANHOLE			SURVEY BAR	
	CATCH BASIN			CURB STOP	
	CURB INLET			TREE	
	JUNCTIONS			ANODE	
	CULVERT			CONCRETE SIDEWALK	
	GAS			FENCE	

**LOCATION APPROVED UNDERGROUND STRUCTURES**

SUPV. U/G STRUCTURES COMMITTEE DATE

**NOTE:**  
LOCATION OF UNDERGROUND STRUCTURES AS SHOWN ARE BASED ON THE BEST INFORMATION AVAILABLE. BUT NO GUARANTEE IS GIVEN THAT ALL EXISTING UTILITIES ARE SHOWN OR THAT THE GIVEN LOCATIONS ARE EXACT. CONFIRMATION OF EXISTENCE AND EXACT LOCATION OF ALL SERVICES MUST BE OBTAINED FROM THE INDIVIDUAL UTILITIES BEFORE PROCEEDING WITH CONSTRUCTION.

NO.	REVISIONS	DATE	BY
0	ISSUED FOR TENDER	16/06/2004	GSK
A	ISSUED FOR REVIEW	14/06/2006	GSK

**EARTH TECH**  
A tyco INTERNATIONAL LTD. COMPANY  
Earth Tech (Canada) Inc. Winnipeg, Manitoba 204.477.5381

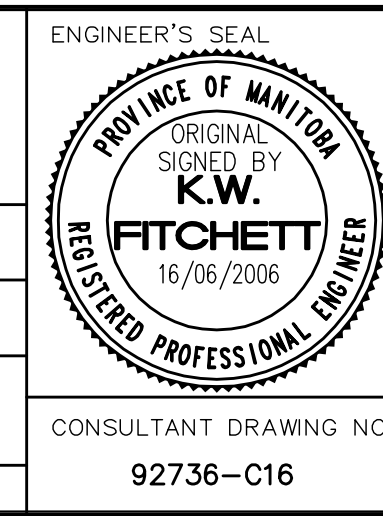
DESIGNED BY: GDL, GSK  
CHECKED BY: GSK

DRAWN BY: MAF  
APPROVED BY: KWF

HOR. SCALE: 1:250  
VERTICAL SCALE: 1:50

RELEASED FOR CONSTRUCTION BY: K. ZUREK

DATE: 04/05/2006  
DATE: 19/06/2006



**THE CITY OF WINNIPEG**  
Winnipeg WATER AND WASTE DEPARTMENT

**2006 WATERMAIN RENEWALS CONTRACT 19**

MANFORD CLOSE WEST LEG  
MANFORD CLOSE (SOUTH LEG) TO STA. 1+20

SHEET 8 OF 14  
CITY DRAWING NUMBER D-9044

CONSULTANT DRAWING NO. 92736-C16