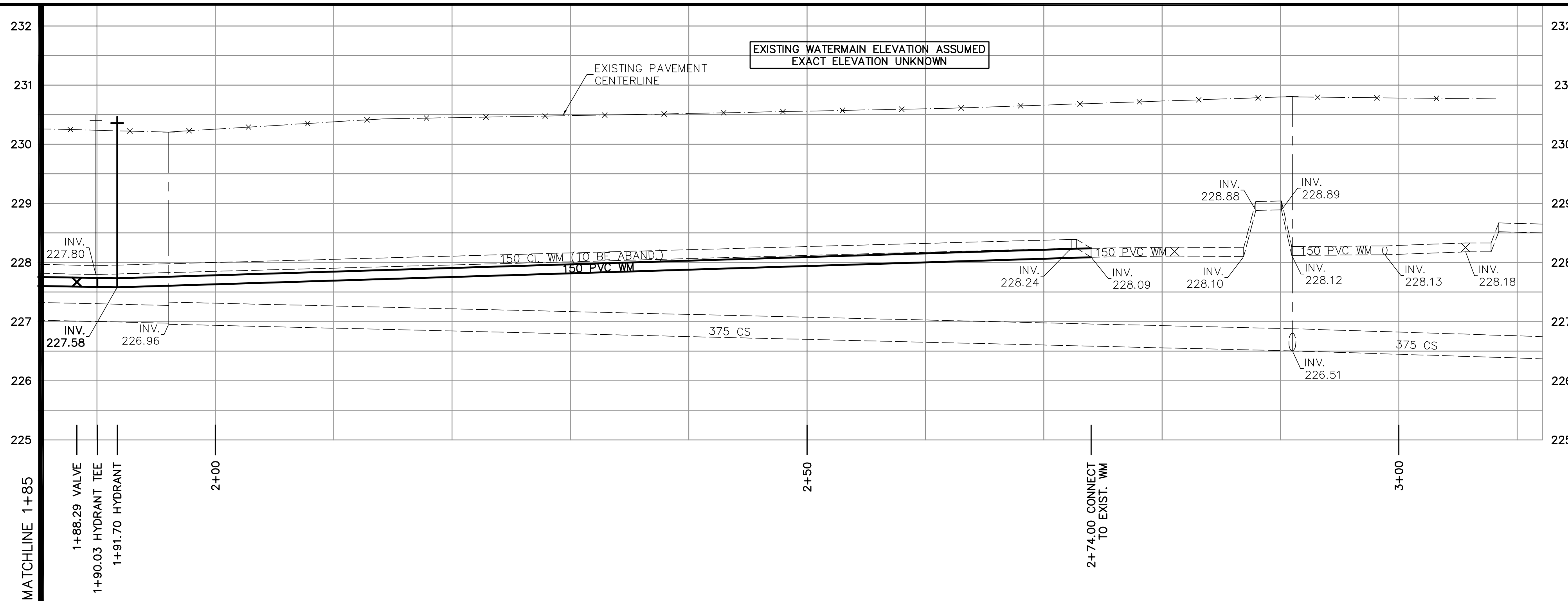
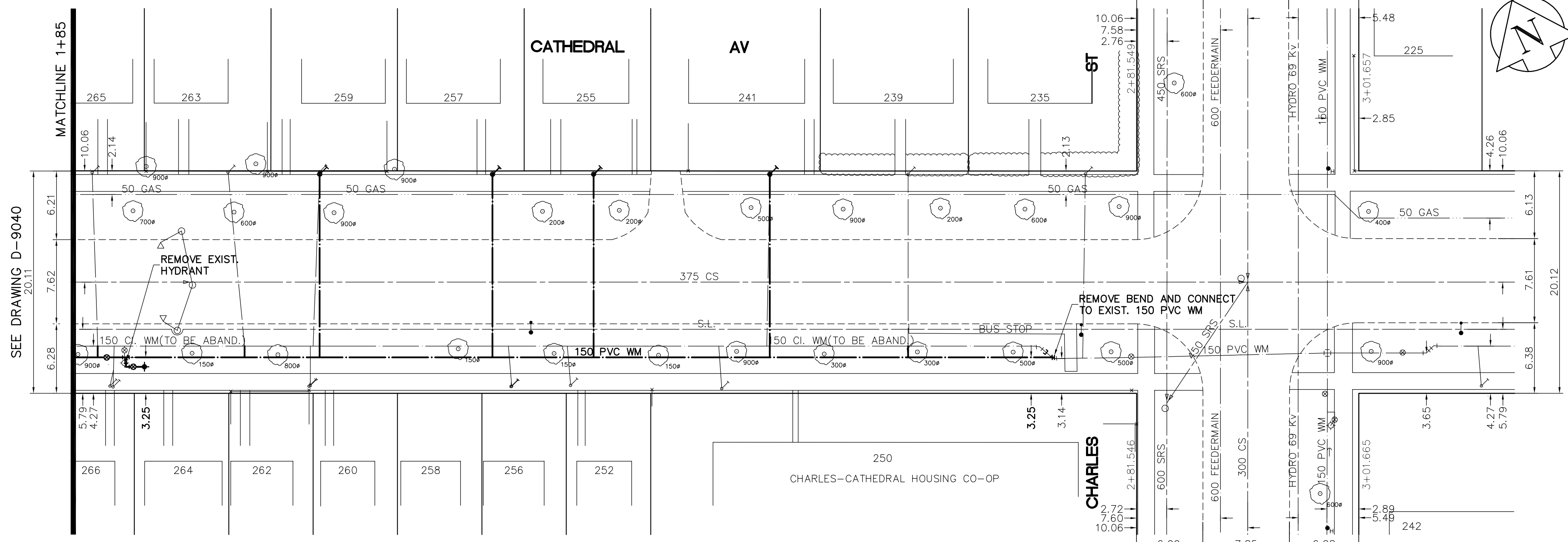


FILE NAME: L:\work\10000\102736\102736-030\Drawings\102736-031.dwg
 LAYOUT NAME: 92736-031
 PLOTTED BY: michael.henderson
 Jan 16, 2006 - 4:42pm

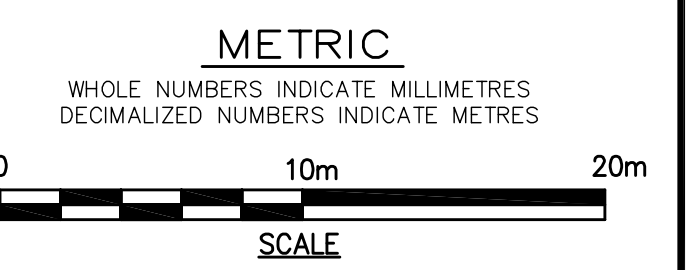


- CONSTRUCTION NOTES**
1. EXPOSE WATERMAIN CONNECTIONS AND CONFIRM INVERTS PRIOR TO CONSTRUCTION.
 2. INSTALL WATERMAIN BY TRENCHLESS METHODS.
 3. ALL MATERIALS SHALL CONFORM TO THE CITY OF WINNIPEG STANDARD CONSTRUCTION SPECIFICATIONS.
 4. MINIMUM COVER TO TOP OF PROPOSED WATERMAIN SHALL BE 2.5m FROM STREET CENTERLINE.
 5. INSTALL ALL HYDRANTS WITH FLANGE ELEVATION 50mm - 150mm ABOVE FINISHED GRADE.
 6. REPLACE ALL EXISTING LEAD SERVICES FROM THE PROPOSED WATERMAIN TO PROPERTY LINE.
 7. NOTIFY ALL AFFECTED RESIDENTS AND BUSINESSES 24 HOURS IN ADVANCE OF ANY WATER SHUTDOWN OR DISRUPTION OF SERVICE.
 8. LOCATION OF WATER SERVICES SHOWN ON DRAWINGS ARE APPROXIMATE. THE CONTRACTOR SHALL FIELD LOCATE ALL WATER SERVICES PRIOR TO CONSTRUCTION.
 9. ALL VALVES SHALL BE RED TOP (COUNTER CLOCKWISE TO CLOSE).
 10. BACKFILL UNDER OR WITHIN 1.0m OF PAVEMENTS, INCLUDING SIDEWALKS SHALL BE CLASS 3 BACKFILL EXCEPT AS NOTED. BACKFILL IN BOULEVARDS SHALL BE CLASS 5 BACKFILL.
 11. RENEW ALL LEAD SERVICES TO PROPERTY LINE.
 12. CHAINAGE MEASURED ALONG SOUTH PROPERTY LINE.



ADDRESS	NATURE OF SERVICE	SIZE	MATERIAL	DISTANCE SC TO PROPERTY	POSITION OF SC (curb stop)	POSITION OF CC (corp)	COMMENTS:
235 CATHEDRAL AV	RESIDENTIAL	25 mm	COPPER	0.5 m	Long: 22.7 m N of NL BLDG Short: 2.3 m S of NL BLDG	Long: 0.4 m S of S/C Short: 0.4 m S of S/C	CORP WMAIN TAPPED OPP SIDE
238 CATHEDRAL AV	RESIDENTIAL	19 mm	COPPER	0.5 m	Long: 27.1 m W of EL CHARLES Short: 4.3 m E of EL CHARLES	Long: 1.2 m W of S/C Short: 1.2 m W of S/C	
239 CATHEDRAL AV	RESIDENTIAL	13 mm	COPPER	0.3 m	Long: 21.0 m W of WL BLDG Short: 4.3 m W of WL BLDG	Long: OPP of S/C Short: OPP of S/C	
240 CATHEDRAL AV	RESIDENTIAL	19 mm	LEAD	0.3 m	Long: 27.1 m E of CENTRE OF BLDGS Short: 2.9 m W of EL CHARLES	Long: OPP of S/C Short: OPP of S/C	
241 CATHEDRAL AV	RESIDENTIAL	19 mm	LEAD	0.3 m	Long: 33.2 m W of WL CHARLES Short: 3.4 m W of WL BLDG	Long: OPP of S/C Short: 0.3 m W of S/C	RENEW TO PROPERTY
242 CATHEDRAL AV	RESIDENTIAL	19 mm	COPPER	0.5 m	Long: 11.6 m E of EL CHARLES Short: 2.9 m W of EL BLDG	Long: OPP of S/C Short: 0.3 m W of S/C	S&W SAME TRENCH
250 CATHEDRAL AV	RESIDENTIAL	38 mm	COPPER	0.3 m	Long: 47.5 m W of WL CHARLES Short: 0.3 m E of WL BLDG	Long: OPP of S/C Short: OPP of S/C	
252 CATHEDRAL AV	RESIDENTIAL	19 mm	COPPER	0.3 m	Long: 51.8 m W of WL CHARLES Short: 12.2 m E of WL BLDG	Long: OPP of S/C Short: 0.3 m W of S/C	
255 CATHEDRAL AV	RESIDENTIAL	13 mm	LEAD	13.1 m	Long: 22.9 m E of L BLDG Short: 11.6 m E of L LANGEVIN	Long: OPP of S/C Short: OPP of S/C	RENEW TO PROPERTY
256 CATHEDRAL AV	RESIDENTIAL	19 mm	COPPER	0.5 m	Long: 56.4 m W of WL CHARLES Short: 1.4 m E of WL BLDG	Long: OPP of S/C Short: 0.3 m W of S/C	BRANCH SERV WITH 258

ADDRESS	NATURE OF SERVICE	SIZE	MATERIAL	DISTANCE SC TO PROPERTY	POSITION OF SC (curb stop)	POSITION OF CC (corp)	COMMENTS:
257 CATHEDRAL AV	RESIDENTIAL	13 mm	LEAD	0.2 m	Long: 58.2 m W of WL CHARLES Short: 0.6 m W of EL BLDG	Long: OPP of S/C Short: OPP of S/C	RENEW TO PROPERTY
258 CATHEDRAL AV	RESIDENTIAL	19 mm	COPPER	0.5 m	Long: 56.4 m W of WL CHARLES Short: 1.4 m E of EL BLDG 256	Long: OPP of S/C Short: 0.3 m W of S/C	BRANCH SERV WITH 256
259 CATHEDRAL AV	RESIDENTIAL	16 mm	LEAD	0.3 m	Long: 110.3 m E of EL AKINS Short: 1.5 m W of WL BLDG	Long: OPP of S/C Short: 0.6 m W of S/C	RENEW TO PROPERTY
260 CATHEDRAL AV	RESIDENTIAL	19 mm	COPPER	0.5 m	Long: 75.1 m W of WL CHARLES Short: 0.5 m W of WL BLDG	Long: OPP of S/C Short: OPP of S/C	BRANCH WITH 262
262 CATHEDRAL AV	RESIDENTIAL	19 mm	COPPER	0.5 m	Long: 75.1 m W of WL CHARLES Short: 1.5 m E of EL BLDG	Long: OPP of S/C Short: OPP of S/C	RENEWED 1965
263 CATHEDRAL AV	RESIDENTIAL	19 mm	COPPER	0.3 m	Long: 82.6 m W of WL CHARLES Short: OPP of EL BLDG	Long: OPP of S/C Short: 1.5 m E of S/C	
264 CATHEDRAL AV	RESIDENTIAL	19 mm	COPPER	0.5 m	Long: 89.0 m E of EL AKINS Short: 3.0 m W of WL BLDG	Long: OPP of S/C Short: 33.1 m E of VALVE	
265 CATHEDRAL AV	RESIDENTIAL	19 mm	COPPER	0.0 m	Long: 94.8 m W of WL AKINS Short: 3.4 m E of WL BLDG	Long: OPP of S/C Short: 0.5 m E of S/C	RENEWED 1981
266 CATHEDRAL AV	RESIDENTIAL	19 mm	COPPER	0.5 m	Long: 88.7 m E of EL AKINS Short: 0.6 m W of EL BLDG	Long: OPP of S/C Short: 0.3 m W of S/C	RENEWED 1967



EXISTING	LEGEND - PLAN	PROPOSED	EXISTING	LEGEND - PLAN	PROPOSED	EXISTING	LEGEND - PROFILE	PROPOSED
150 mm W.M.	WATERMAIN	150 mm W.M.	Hydro	HYDRO	Hydro	300mm L.D.S.	LAND DRAINAGE SEWER	300mm L.D.S.
Hydrant	HYDRANT	Valve	CONCRETE	CONCRETE	ASPHALT	250mm W.W.S.	WASTE WATER SEWER	250mm W.W.S.
Manhole	MANHOLE	Catch Basin	PROPERTY LINE	PROPERTY LINE	Curb Stop	Tree	TREE	Tree
Curb Inlet	CURB INLET	Junctions	CONCRETE SIDEWALK	CONCRETE SIDEWALK	Fence			

LOCATION APPROVED UNDERGROUND STRUCTURES

SUPV. U/G STRUCTURES COMMITTEE DATE

NOTE:
 LOCATION OF UNDERGROUND STRUCTURES AS SHOWN ARE BASED ON THE BEST INFORMATION AVAILABLE. BUT NO GUARANTEE IS GIVEN THAT ALL EXISTING UTILITIES ARE SHOWN OR THAT THE GIVEN LOCATIONS ARE EXACT. CONFIRMATION OF EXISTENCE AND EXACT LOCATION OF ALL SERVICES MUST BE OBTAINED FROM THE INDIVIDUAL UTILITIES BEFORE PROCEEDING WITH CONSTRUCTION.

NO.	REVISIONS	DATE	BY
0	ISSUED FOR TENDER	16/06/2004	GSK
A	ISSUED FOR REVIEW	14/06/2006	GSK

EARTH TECH
 A tyco INTERNATIONAL LTD. COMPANY
 Earth Tech (Canada) Inc. Winnipeg, Manitoba 204.477.5381

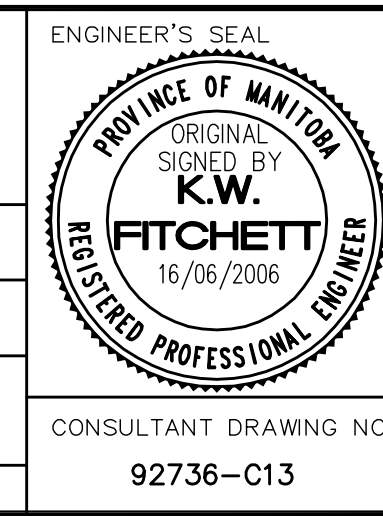
DESIGNED BY: GDL, GSK
 CHECKED BY: GSK

DRAWN BY: MAF
 APPROVED BY: KWF

HOR. SCALE: 1:250
 VERTICAL SCALE: 1:50

RELEASED FOR CONSTRUCTION BY: K. ZUREK

DATE: 04/05/2006
 DATE: 19/06/2006



THE CITY OF WINNIPEG
 Winnipeg WATER AND WASTE DEPARTMENT

2006 WATERMAIN RENEWALS CONTRACT 19

CATHEDRAL AVENUE
 AIKINS STREET TO CHARLES STREET
 STA. 1+85 TO CHARLES STREET

SHEET 5 OF 14
 CITY DRAWING NUMBER D-9041

CONSULTANT DRAWING NO. 92736-013