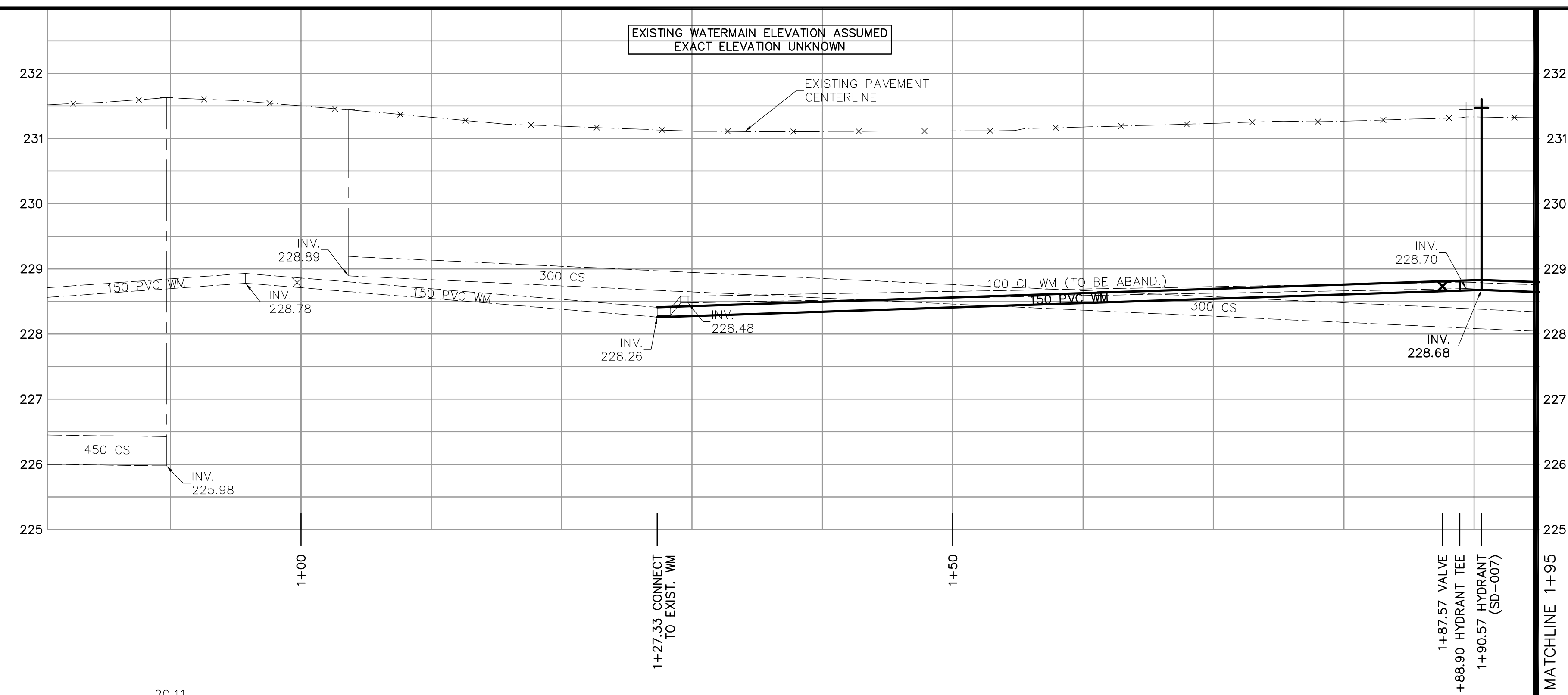
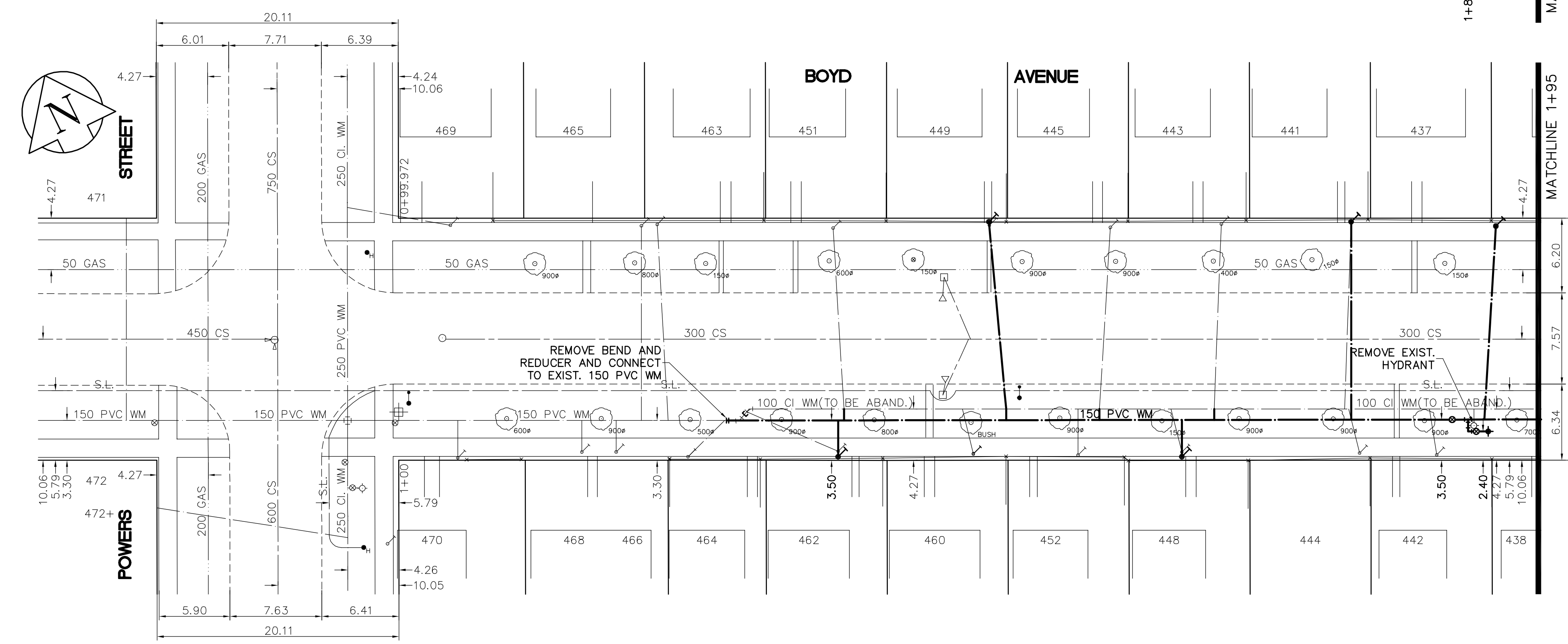


SHEET: CWM-WM-A1 (11/2006) FILE NAME: L:\Work\10000\102726\102726-CAD\Main\102726-C10.dwg LAYOUT NAME: 92736-C10 PLOTTED BY: mrosal@winipeg.ca Jan 16, 2006 - 4:50pm



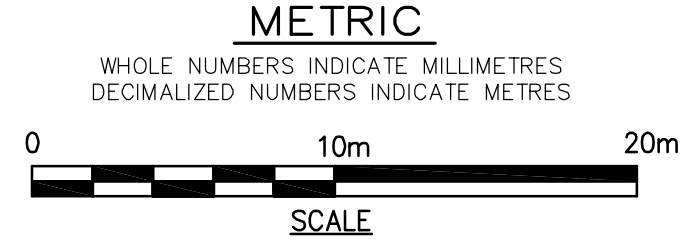
- CONSTRUCTION NOTES**
1. EXPOSE WATERMAIN CONNECTIONS AND CONFIRM INVERTS PRIOR TO CONSTRUCTION.
  2. INSTALL WATERMAIN BY TRENCHLESS METHODS.
  3. ALL MATERIALS SHALL CONFORM TO THE CITY OF WINNIPEG STANDARD CONSTRUCTION SPECIFICATIONS.
  4. MINIMUM COVER TO TOP OF PROPOSED WATERMAIN SHALL BE 2.5m FROM STREET CENTERLINE.
  5. INSTALL ALL HYDRANTS WITH FLANGE ELEVATION 50mm - 150mm ABOVE FINISHED GRADE.
  6. REPLACE ALL EXISTING LEAD SERVICES FROM THE PROPOSED WATERMAIN TO PROPERTY LINE.
  7. NOTIFY ALL AFFECTED RESIDENTS AND BUSINESSES 24 HOURS IN ADVANCE OF ANY WATER SHUTDOWN OR DISRUPTION OF SERVICE.
  8. LOCATION OF WATER SERVICES SHOWN ON DRAWINGS ARE APPROXIMATE. THE CONTRACTOR SHALL FIELD LOCATE ALL WATER SERVICES PRIOR TO CONSTRUCTION.
  9. ALL VALVES SHALL BE RED TOP (COUNTER CLOCKWISE TO CLOSE).
  10. BACKFILL UNDER OR WITHIN 1.0m OF PAVEMENTS, INCLUDING SIDEWALKS SHALL BE CLASS 3 BACKFILL EXCEPT AS NOTED. BACKFILL IN BOULEVARDS SHALL BE CLASS 5 BACKFILL.
  11. RENEW ALL LEAD SERVICES TO PROPERTY LINE.
  12. CHAINAGE MEASURED ALONG SOUTH PROPERTY LINE.



ADDRESS	NATURE OF SERVICE	SIZE	MATERIAL	DISTANCE SC TO PROPERTY	POSITION OF SC (curb stop)	POSITION OF CC (corp)	COMMENTS:
437 BOYD AV	RESIDENTIAL	13 mm	LEAD	0.3 m	Long: 61.3 m E of EL POWERS Short: 2.7 m E of EL BLDG	Long: 0.6 m E of SL	RENEW TO PROPERTY
438 BOYD AV	RESIDENTIAL	19 mm	COPPER	0.3 m	Long: 81.4 m W of EL SALTER Short: 1.2 m E of EL BLDG	Long: 0.6 m W of SL	FORMERLY DBLE WITH 436 DIRECT TAP
441 BOYD AV	RESIDENTIAL	19 mm	LEAD	0.3 m	Long: 78.5 m E of EL POWERS Short: 1.8 m E of EL BLDG	Long: 0.6 m W of SL	RENEW TO PROPERTY
442 BOYD AV	RESIDENTIAL	19 mm	COPPER	0.3 m	Long: 95.7 m W of EL SALTER Short: 1.5 m E of EL BLDG	Long: 0.6 m W of SL	RENEWED MAR 00
443 BOYD AV	RESIDENTIAL	19 mm	COPPER	0.3 m	Long: 68.0 m E of EL POWERS Short: 0.9 m E of EL BLDG	Long: 0.6 m W of SL	REVERSE TAP
444 BOYD AV	RESIDENTIAL	19 mm	COPPER	0.5 m	Long: 80.3 m E of EL POWERS Short: 2.3 m E of EL BLDG	Long: 0.9 m W of SL	RENEWED 1965
445 BOYD AV	RESIDENTIAL	19 mm	COPPER	0.3 m	Long: 59.7 m E of EL POWERS Short: 2.1 m E of EL BLDG	Long: 0.9 m W of SL	RENEWED 1974
448 BOYD AV	RESIDENTIAL	13 mm	LEAD	0.3 m	Long: 65.5 m W of EL POWERS Short: 0.3 m W of EL BLDG	Long: 0.9 m W of SL	RENEW TO PROPERTY
449 BOYD AV	RESIDENTIAL	19 mm	COPPER	0.3 m	Long: 49.7 m E of EL POWERS Short: 0.6 m E of EL BLDG	Long: 1.4 m E of SL	RENEW TO PROPERTY
451 BOYD AV	RESIDENTIAL	19 mm	COPPER	0.5 m	Long: 38.4 m E of EL POWERS Short: 0.9 m W of EL BLDG	Long: 0.9 m E of SL	RENEWED 1983

ADDRESS	NATURE OF SERVICE	SIZE	MATERIAL	DISTANCE SC TO PROPERTY	POSITION OF SC (curb stop)	POSITION OF CC (corp)	COMMENTS:
452 BOYD AV	RESIDENTIAL	19 mm	COPPER	0.3 m	Long: 56.7 m E of EL POWERS Short: 2.1 m W of EL BLDG	Long: 0.6 m W of SL	
460 BOYD AV	RESIDENTIAL	19 mm	COPPER	0.3 m	Long: 50.0 m E of EL POWERS Short: 0.9 m W of EL BLDG	Long: 0.9 m W of SL	RENEW TO PROPERTY
462 BOYD AV	RESIDENTIAL	19 mm	COPPER	0.6 m	Long: 36.9 m E of EL POWERS Short: 0.9 m W of EL BLDG	Long: 7.6 m W of SL	
463 BOYD AV	RESIDENTIAL	19 mm	COPPER	0.5 m	Long: 21.6 m E of EL POWERS Short: 1.5 m W of EL BLDG	Long: 0.9 m E of SL	
464 BOYD AV	RESIDENTIAL	19 mm	COPPER	0.4 m	Long: 24.1 m E of EL POWERS Short: 1.5 m E of EL BLDG	Long: 3.0 m E of SL	
465 BOYD AV	RESIDENTIAL	19 mm	COPPER	0.4 m	Long: 24.1 m E of EL POWERS Short: 2.4 m E of EL BLDG	Long: OPP of SL	
466 BOYD AV	RESIDENTIAL	19 mm	COPPER	0.6 m	Long: 18.3 m E of EL POWERS Short: 3.0 m W of EL BLDG	Long: SAME of SL	
468 BOYD AV	RESIDENTIAL	19 mm	COPPER	0.6 m	Long: 15.5 m E of EL POWERS Short: 4.0 m E of EL BLDG	Long: OPPE of SL	
469 BOYD AV	RESIDENTIAL	19 mm	COPPER	0.4 m	Long: 4.9 m E of EL POWERS Short: 4.6 m E of EL BLDG	Long: 0.9 m NNL of BOYD	
470 BOYD AV	RESIDENTIAL	13 mm	COPPER	0.6 m	Long: 4.3 m N of EL BLDG Short: 4.3 m N of SL BLDG	Long: OPP of SL	

**APEGM**  
Certificate of Authorization  
Earth Tech Canada Inc.  
No. 730 Expiry: April 30, 2007



EXISTING	LEGEND - PLAN	PROPOSED	EXISTING	LEGEND - PLAN	PROPOSED	EXISTING	LEGEND - PROFILE	PROPOSED
150 mm W.M.	WATERMAIN	150 mm W.M.	Hydro	HYDRANT	Hydro	150 mm W.M.	WATERMAIN	150 mm W.M.
Hydrant Valve	HYDRANT VALVE	Hydrant Valve	Telephone	TELEPHONE	Telephone	Hydrant Valve	HYDRANT VALVE	Hydrant Valve
300mm L.D.S.	LAND DRAINAGE SEWER	300mm L.D.S.	Concrete	CONCRETE	Concrete	300mm L.D.S.	LAND DRAINAGE SEWER	300mm L.D.S.
250mm W.W.S.	WASTEWATER SEWER	250mm W.W.S.	Asphalt	ASPHALT	Asphalt	250mm W.W.S.	WASTEWATER SEWER	250mm W.W.S.
Manhole	MANHOLE	Manhole	Property Line	PROPERTY LINE	Property Line	Manhole	MANHOLE	Manhole
Catch Basin	CATCH BASIN	Catch Basin	Survey Bar	SURVEY BAR	Survey Bar	Catch Basin	CATCH BASIN	Catch Basin
Curb Inlet	CURB INLET	Curb Inlet	Curb Stop	CURB STOP	Curb Stop	Curb Inlet	CURB INLET	Curb Inlet
Junctions	JUNCTIONS	Junctions	Tree	TREE	Tree	Junctions	JUNCTIONS	Junctions
Culvert	CULVERT	Culvert	Anode	ANODE	Anode	Culvert	CULVERT	Culvert
Gas	GAS	Gas	Concrete Sidewalk	CONCRETE SIDEWALK	Concrete Sidewalk	Gas	GAS	Gas
Existing	LEGEND - PLAN	Proposed	Fence	FENCE	Fence	Existing	LEGEND - PROFILE	Proposed

**LOCATION APPROVED UNDERGROUND STRUCTURES**

SUPV. U/G STRUCTURES COMMITTEE DATE

**NOTE:**  
LOCATION OF UNDERGROUND STRUCTURES AS SHOWN ARE BASED ON THE BEST INFORMATION AVAILABLE, BUT NO GUARANTEE IS GIVEN THAT ALL EXISTING UTILITIES ARE SHOWN OR THAT THE GIVEN LOCATIONS ARE EXACT. CONFIRMATION OF EXISTENCE AND EXACT LOCATION OF ALL SERVICES MUST BE OBTAINED FROM THE INDIVIDUAL UTILITIES BEFORE PROCEEDING WITH CONSTRUCTION.

B.M. 26-036  
ELEV. 231.470  
N.W. Cor. Church Ave. and Andrews St., brass plug in a 4.6m Conc. pile, 0.3m N. of the N.L. Church Ave. and 2.6m E. of the W.L. Andrews St.

**EARTH TECH**  
A tyco INTERNATIONAL LTD. COMPANY  
Earth Tech (Canada) Inc. Winnipeg, Manitoba 204-477-5381

DESIGNED BY: GDL, GSK  
DRAWN BY: MAF

CHECKED BY: GSK  
APPROVED BY: KWF

HOR. SCALE: 1:250  
VERTICAL SCALE: 1:50

ISSUED FOR TENDER: 16/06/2006 GSK  
ISSUED FOR REVIEW: 14/06/2006 GSK

RELEASED FOR CONSTRUCTION BY: K. ZUREK  
DATE: 19/06/2006

ENGINEER'S SEAL  
PROVINCE OF MANITOBA  
REGISTERED PROFESSIONAL ENGINEER  
K.W. FITCHETT  
16/06/2006  
CONSULTANT DRAWING NO. 92736-C10

**THE CITY OF WINNIPEG**  
Winnipeg WATER AND WASTE DEPARTMENT

**2006 WATERMAIN RENEWALS CONTRACT 19**

BOYD AVENUE  
POWERS STREET TO SALTER STREET  
POWERS STREET TO STA. 1+95

SHEET OF 2 14  
CITY DRAWING NUMBER D-9038