

| MARK | PILE # (mm) | PILE LENGTH (m) | REINFORCEMENT                         |
|------|-------------|-----------------|---------------------------------------|
| P1   | 406         | 6.0             | 5-15M VERTICAL<br>10M RINGS 900mm O/C |
| P2   | 406         | 7.5             |                                       |
| P3   | 406         | 8.0             |                                       |
| P4   | 406         | 8.5             |                                       |
| P5   | 406         | 11.0            |                                       |
| P6   | 406         | 11.5            |                                       |
| P7   | 406         | 12.0            |                                       |
| P8   | 610         | 11.0            | 8-20M VERTICAL<br>10M RINGS 900mm O/C |

| MARK | ELEVATION |
|------|-----------|
| E1   | 96 750    |
| E2   | 96 525    |
| E3   | 98 950    |
| E4   | 99 100    |
| E5   | 98 275    |
| E5   | 99 400    |

**NOTES:**  
 -T/O PILE ELEVATION - SEE ELEVATION SCHEDULE.  
 -REINFORCEMENT TO BE FULL LENGTH OF PILE.  
 -EXTEND REINFORCEMENT 450mm MIN. INTO GRADE BEAMS U.N.O.  
 -ADD 2 RINGS IN TOP 610mm OF PILE.  
 -DESIGN SKIN FRICTION = 16 kPa  
 -PROVIDE CASING AS REQUIRED TO CONTROL SLOUGHING AND WATER SEEPAGE.

| MARK          | GB1  | GB2  | GB3  | GB4  | GB5  | GB6  |
|---------------|--|--|--|--|--|--|
| SIZE (mm)     | 250x750  | 300x1050   | 300x900  | 300x750  | 200x600  | 250x600  |
| REINFORCEMENT | 2-20M TOP<br>2-20M BOTTOM<br>2-10M CONT. MID.<br>10M STIRRUPS<br>Ø300mm O/C. | 2-20M TOP<br>2-20M BOTTOM<br>2-10M CONT. MID.<br>10M STIRRUPS<br>Ø300mm O/C. | 2-20M TOP<br>2-20M BOTTOM<br>2-10M CONT. MID.<br>10M STIRRUPS<br>Ø300mm O/C. | 2-30M TOP<br>2-30M BOTTOM<br>2-10M CONT. MID.<br>10M STIRRUPS<br>Ø300mm O/C, STARTING<br>150mm EACH SIDE OF SUPPORT. | 2-15M TOP<br>2-15M BOTTOM<br>10M STIRRUPS<br>Ø300mm O/C. | 2-15M TOP<br>2-15M BOTTOM<br>10M STIRRUPS<br>Ø300mm O/C. |
| SECTION       |  |  |  |  |  |  |

**NOTES:**  
 -SEE PLAN FOR ADDITIONAL REINF.

| MARK | SIZE (mm) | REINFORCEMENT  |
|------|-----------|--|
| FW1  | 250mm     | 2-20M TOP AND BOTTOM<br>15M Ø200mm O/C VERT. O.F.<br>AND 20M Ø200mm O/C VERT. I.F.<br>AND 10M Ø400mm O/C HORIZ. E.F. |

**NOTE:**  
 REFER TO MECHANICAL AND ELECTRICAL DRAWINGS AND PROVIDE SLEEVES IN FLOOR AND WALLS AS REQUIRED.

ORIGINAL STAMPED BY: N. MARTINEZ, P. ENG.  
 DATE: 2006.07.17

| NO. | REVISION/DESCRIPTION     | BY | DATE       |
|-----|--------------------------|----|------------|
| 2   | ISSUED FOR TENDER        | NM | JULY 17/06 |
| 1   | ISSUED FOR CLIENT REVIEW | NM | JUNE 28/06 |

CONSULTANT  
**TOWER ENGINEERING GROUP**  
 TOWER PROJECT NO. : 6079  
**TOWER ENGINEERING GROUP**  
 208 - 897 CORYDON AVE. WINNIPEG, MB. R3M 0W7  
 TEL: (204) 925-1150 FAX: (204) 925-1155  
 EMAIL: towereng@towereng.co WEB: www.towereng.co

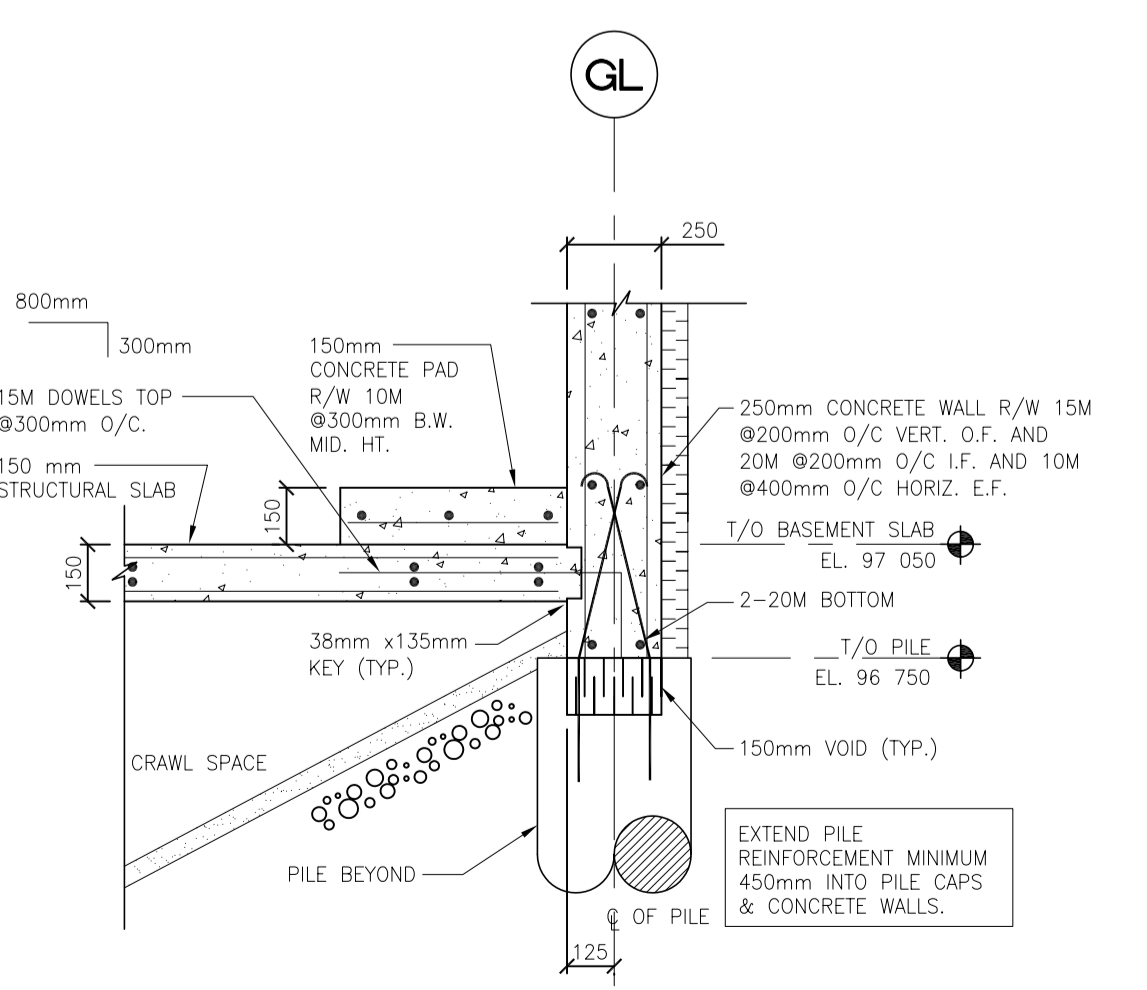
**APEGM**  
 Certificate of Authorization  
 Tower Engineering Group Inc.  
 No. 1918 Expiry: April 30, 2007

DRAWN BY SM CHECKED BY USER APPROVAL APPROVED  
 DATE 2006.07.17

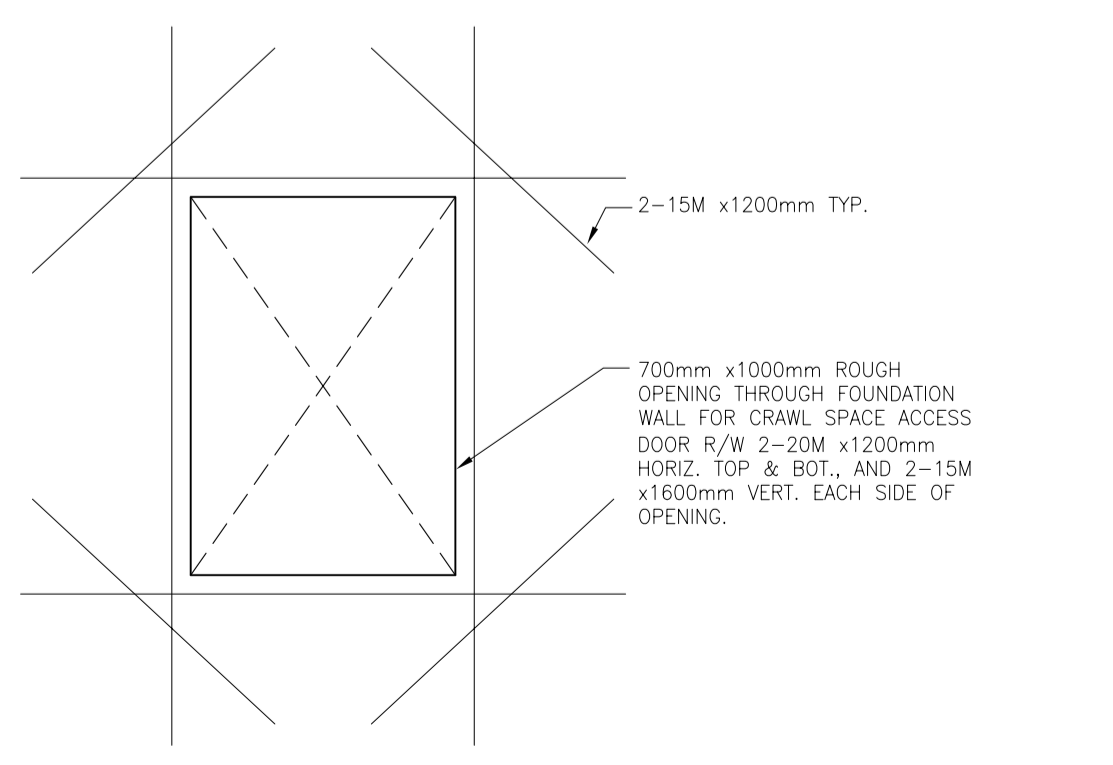
CITY OF WINNIPEG  
 PLANNING, PROPERTY & DEVELOPMENT DEPARTMENT  
 CIVIC ACCOMMODATIONS DIVISION  
 300 - 65 GARRY ST. R3C 4K4

PROJECT  
**WEST TRANSCONA**  
**FIRE PARAMEDIC STATION 21**  
 1446 REGENT AVENUE W  
 SHEET TITLE  
**FOUNDATION PLAN/  
 BASEMENT SLAB PLAN**

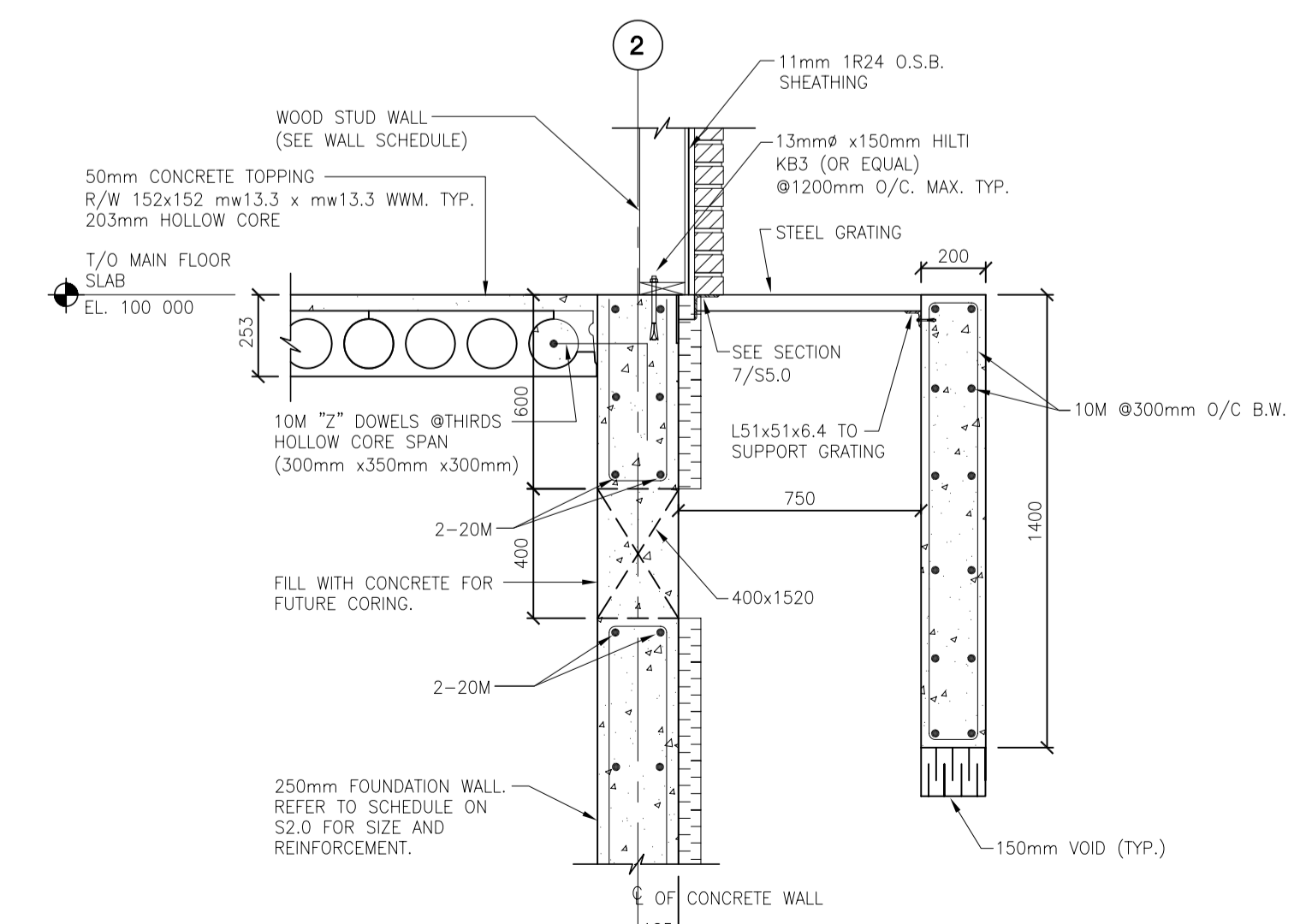
| SCALE    | PROJECT NO. | SHEET NO. |
|----------|-------------|-----------|
| AS SHOWN | 2004-058    | S2.0      |



**2 TYPICAL HOUSE KEEPING PAD SECTION**  
 S2.0 SCALE: 120



**3 OPENING IN CONC. WALL SECTION**  
 S2.0 SCALE: 120



**4 SECTION**  
 S2.0 SCALE: 120

**METRIC**  
 WHOLE NUMBERS ARE IN MILLIMETRES,  
 DECIMALIZED NUMBERS ARE IN METRES