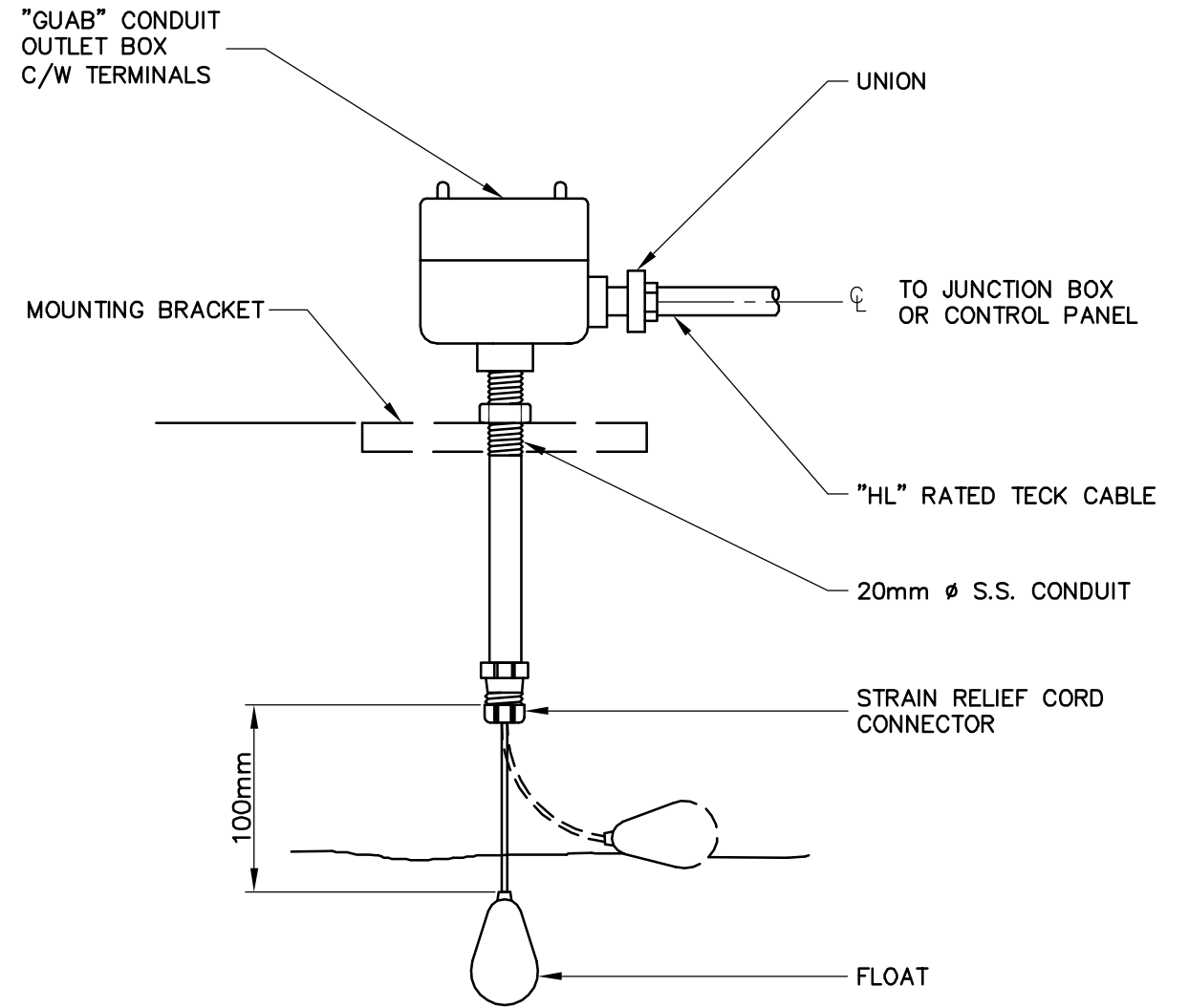


FLANGE-MOUNTED LIQUID LEVEL TRANSMITTER (MANUAL FLUSH)



FLOAT-TYPE LEVEL SWITCH

						ENGINEER'S SEAL ORIGINAL SIGNED BY B.L. MOORE 2006/05/03		THE CITY OF WINNIPEG WATER AND WASTE DEPARTMENT ENGINEERING DIVISION	
		DESIGNED BY NT DRAWN BY LAE SCALE: NTS		CHECKED BY BLM APPROVED BY AHL RELEASED FOR CONSTRUCTION BY: R. SOROKOWSKI		CONSULTANT DRAWING NO. WY-A0457		WATER TREATMENT PLANT YARD PIPING AND VALVE CHAMBERS SURGE TOWER CONSTRUCTION AUTOMATION / I&C PRESSURE TRANSMITTER AND IN-LINE PRESSURE SENSOR AND FLOAT SWITCH INSTALLATION DETAILS	
B.M. ELEV.		NO. REVISIONS		DATE BY DATE		CITY FILE NUMBER		SHEET OF	
00 ISSUED FOR TENDER		06/05/ LAE		2006/02/13		2006/05/03		CITY DRAWING NUMBER 1-0601Y-D-A0457-001-008	