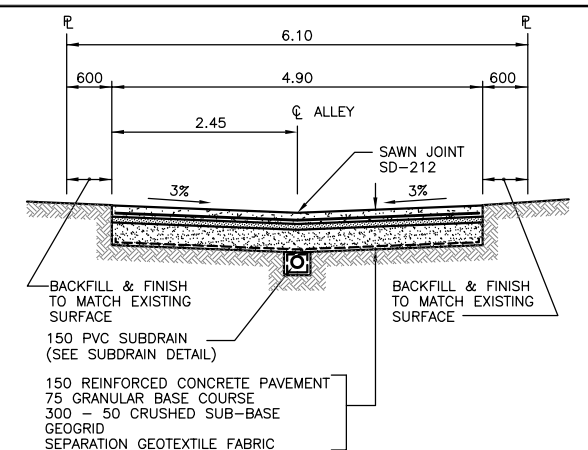


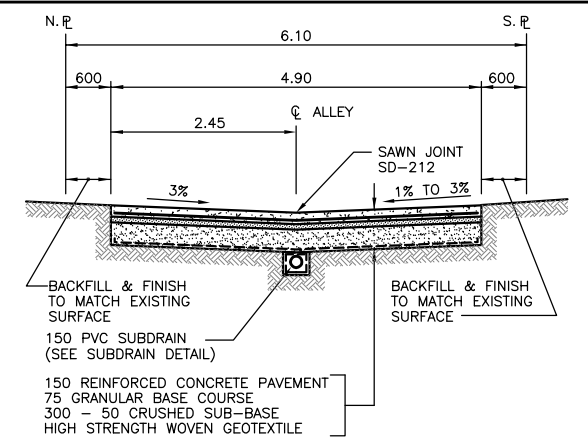
ALLEY PAVEMENT PROFILE

SCALE: 1:250 HOR
1:10 VER



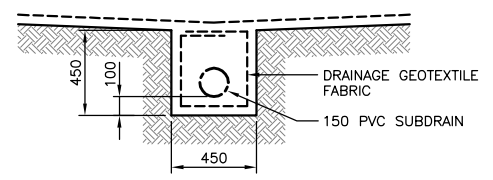
TYPICAL CROSS SECTION

STA 0+93.18 TO STA 1+30.00
STA 1+38.60 TO STA 1+72.45
SCALE: 1:50



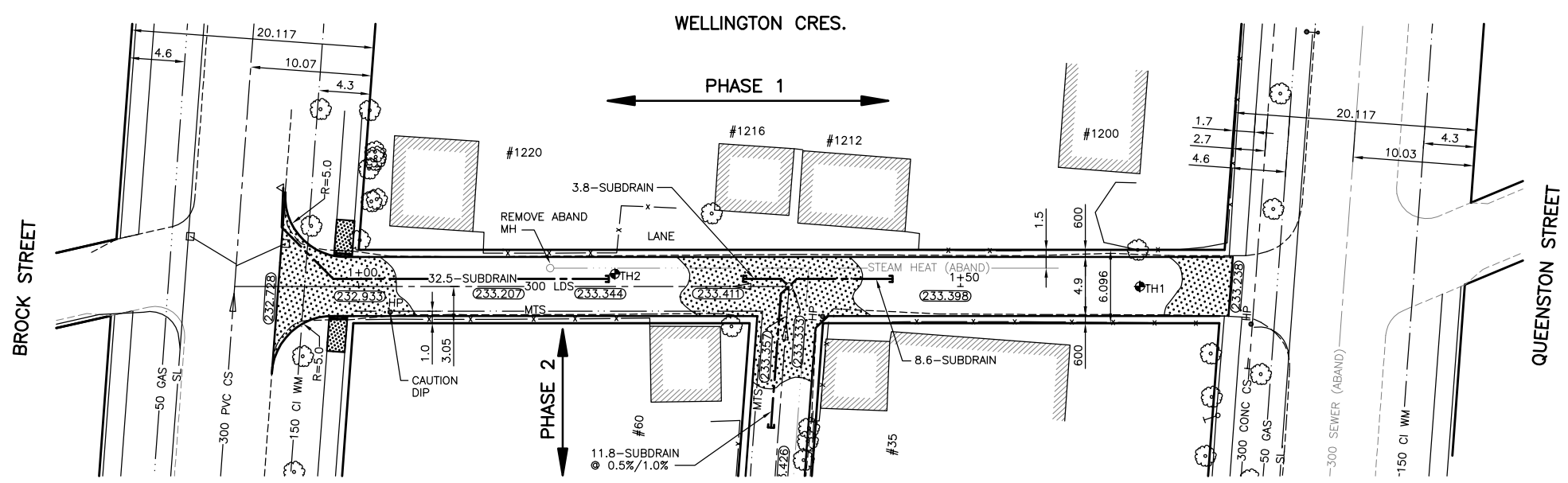
TYPICAL CROSS SECTION

STA 1+30.00 TO STA 1+38.60
SCALE: 1:50



SUBDRAIN DETAIL

SCALE: 1:20



ALLEY PAVEMENT PLAN

SCALE: 1:250 HOR
1:10 VER

NOTE:

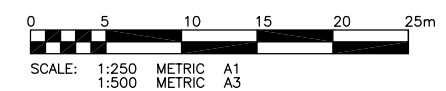
1. STATION CHAINAGE IS BASED ON CENTERLINE OF ALLEY RIGHT OF WAY.
2. ADJUST MH AND CB RIMS TO NEW GRADES.
3. PLUG SUBDRAINS AT TERMINAL ENDS.
4. REGRADE EXISTING PRIVATE SIDEWALKS AS REQUIRED.
5. INSTALLATION OF LIP CURBS AND THEIR EXTENTS TO BE DETERMINED BY THE CONTRACT ADMINISTRATOR.
6. LIGHT STANDARDS, HYDRO POLES AND ANCHORS MAY REQUIRE TEMPORARY SUPPORT/REMOVAL OR REPLACEMENT AT THE CONTRACTOR'S EXPENSE.
7. ISOLATE ALL POLES, BASES AND PILES WITHIN ALLEY RIGHT OF WAY (SD-228C)
8. AVOID DAMAGE TO EXISTING TREES WITHIN THE LIMITS OF CONSTRUCTION.

WARNING

IF POWER EQUIPMENT OR EXPLOSIVES ARE TO BE USED FOR EXCAVATION ON THIS PROJECT THE CONTRACTOR MUST:
1) NOTIFY THE GAS COMPANY OF THE PROPOSED LOCATION OF EXCAVATION.
2) TAKE PRECAUTION TO AVOID DAMAGE TO GAS COMPANY INSTALLATIONS.
SEE PROVINCIAL REGULATION 210/72 FOR DETAILS.

METRIC

WHOLE NUMBERS INDICATE MILLIMETRES
DECIMALIZED NUMBERS INDICATE METRES



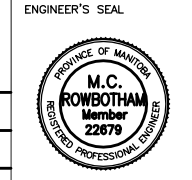
300 LBS	LAND DRAINAGE SEWER	300 LBS		TEST HOLE			
250 WWS	WASTE WATER SEWER	250 WWS		GUY WIRE			
---	GAS	---		LIGHT STANDARD			
---	HYDRO	---		BACK OF CURB			
---	M.T.S.	---		CONCRETE			
150 WM	WATERMAIN	150 WM		ASPHALT			
+	HYDRANT	+		SIDEWALK			
o	VALVE	o		PROPERTY LINE			
o	MANHOLE	o		SURVEY BAR			
□	CATCH BASIN	□		GEODETIC BENCHMARK			
▽	CURB INLET	▽		ELEVATION			
•	POLES	•					
EXISTING	LEGEND-PLAN	PROPOSED	EXISTING	LEGEND-PROFILE	PROPOSED	EXISTING	LEGEND-PROFILE

LOCATION APPROVED UNDERGROUND STRUCTURES

SUPV. U/G STRUCTURES DATE COMMITTEE
NOTE: LOCATION OF UNDERGROUND STRUCTURES AS SHOWN ARE BASED ON THE BEST INFORMATION AVAILABLE BUT NO GUARANTEE IS GIVEN THAT ALL EXISTING UTILITIES ARE SHOWN OR THAT THE GIVEN LOCATIONS ARE EXACT. CONFIRMATION OF EXISTENCE AND EXACT LOCATION OF ALL SERVICES MUST BE OBTAINED FROM THE INDIVIDUAL UTILITIES BEFORE PROCEEDING WITH CONSTRUCTION.

B.M. 51-049 ELEV. 233.099m	90R570-N. SIDE WELLINGTON CRES. & QUEENSTON ST. BRASS PLUG IN 10.8m CONC. PILE, 4.1m E. OF N.L. OF QUEENSTON ST. PRODUCED FROM THE S. & 2.3 S. OF THE N.L. OF WELLINGTON CRES.
DESIGNED BY RO	CHECKED BY CR
DRAWN BY DW	APPROVED BY
0 ISSUED FOR TENDER 06/05/25 CR	HOR. SCALE: 1:250
A ISSUED FOR REVIEW 06/04/28 CR	VERTICAL: 1:10
NO. REVISIONS	DATE BY
	09/02/06

KGS GROUP
CONSULTING ENGINEERS & PROJECT MANAGERS
WINNIPEG (204) 986-1299
THUNDER BAY (807) 345-2233



THE CITY OF WINNIPEG
PUBLIC WORKS DEPARTMENT
ENGINEERING SERVICES DIVISION

PROJECT TITLE: **2006 ALLEY RENEWAL PROGRAM**
WELLINGTON CR. SOUTH ALLEY
BROCK ST. TO QUEENSTON ST.
STA. 0+93.18 TO STA. 1+72.45

SHEET **04** OF **14**
COMPUTER FILE NAME: **06-0107-05**
CITY DRAWING NUMBER: **0004**

CONSULTANT DRAWING NO.: **06-0107-05**

P:\PROJ\2006\06-107-05\MUN\DWG\BROCK-QUEENSTON-ALLEY\BROCK-DWG\BROCK-QUEENSTON-PLAN.PLOT.DWG