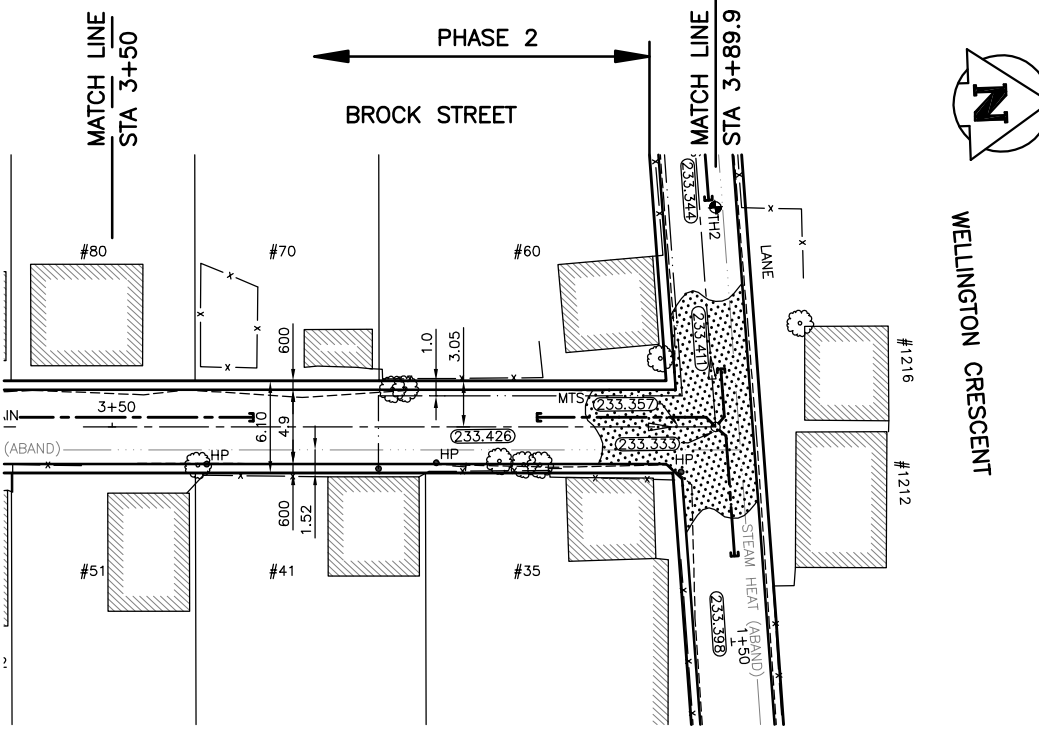
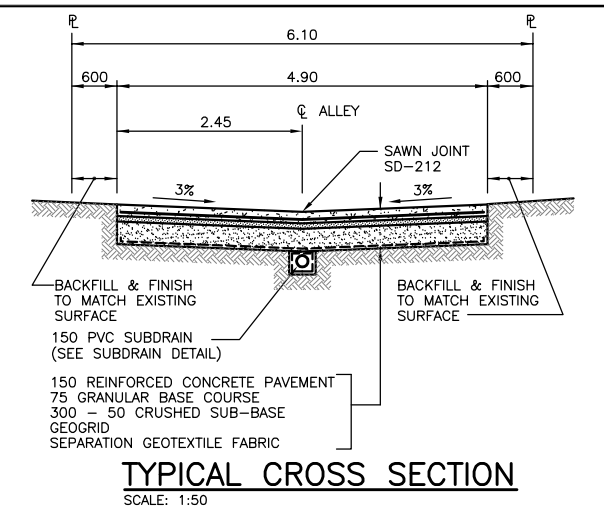


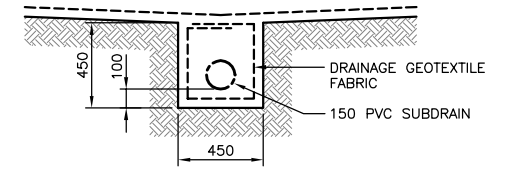
ALLEY PAVEMENT PROFILE
SCALE: 1:250 HOR
1:10 VER



ALLEY PAVEMENT PLAN
SCALE: 1:250 HOR
1:10 VER



TYPICAL CROSS SECTION
SCALE: 1:50



SUBDRAIN DETAIL
SCALE: 1:20

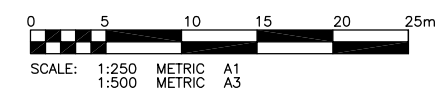
- NOTE:**
1. STATION CHAINAGE IS BASED ON CENTERLINE OF ALLEY RIGHT OF WAY.
 2. ADJUST MH AND CB RIMS TO NEW GRADES.
 3. PLUG SUBDRAINS AT TERMINAL ENDS.
 4. REGRADE EXISTING PRIVATE SIDEWALKS AS REQUIRED.
 5. INSTALLATION OF LIP CURBS AND THEIR EXTENTS TO BE DETERMINED BY THE CONTRACT ADMINISTRATOR.
 6. LIGHT STANDARDS, HYDRO POLES AND ANCHORS MAY REQUIRE TEMPORARY SUPPORT/REMOVAL OR REPLACEMENT AT THE CONTRACTOR'S EXPENSE.
 7. ISOLATE ALL POLES, BASES AND PILES WITHIN ALLEY RIGHT OF WAY (SD-228C) INSTALLATIONS.
 8. AVOID DAMAGE TO EXISTING TREES WITHIN THE LIMITS OF CONSTRUCTION.

WARNING

IF POWER EQUIPMENT OR EXPLOSIVES ARE TO BE USED FOR EXCAVATION ON THIS PROJECT THE CONTRACTOR MUST:
1) NOTIFY THE GAS COMPANY OF THE PROPOSED LOCATION OF EXCAVATION.
2) TAKE PRECAUTION TO AVOID DAMAGE TO GAS COMPANY INSTALLATIONS.
SEE PROVINCIAL REGULATION 210/72 FOR DETAILS.

METRIC

WHOLE NUMBERS INDICATE MILLIMETRES
DECIMALIZED NUMBERS INDICATE METRES



APEGM
Certificate of Authorization
KGS Group
No. 245 Expiry: April 30, 2007

300 LBS	LAND DRAINAGE SEWER	300 LBS							
250 WWS	WASTE WATER SEWER	250 WWS	+	TEST HOLE					
---	GAS	---	+	GUY WIRE					
---	HYDRO	---	+	LIGHT STANDARD					
---	M.T.S.	---	+	BACK OF CURB					
150 WM	WATERMAIN	150 WM	---	CONCRETE					
+	HYDRANT	+	---	ASPHALT					
+	VALVE	+	---	SIDEWALK					
o	MANHOLE	o	---	PROPERTY LINE					
□	CATCH BASIN	□	---	SURVEY BAR					
▽	CURB INLET	▽	---	GEODETTIC BENCHMARK					
•	POLES	•	---	ELEVATION					
EXISTING	LEGEND-PLAN	PROPOSED	EXISTING	LEGEND-PLAN	PROPOSED	EXISTING	LEGEND-PROFILE	PROPOSED	

LOCATION APPROVED UNDERGROUND STRUCTURES

SUPV. U/G STRUCTURES COMMITTEE DATE

NOTE:
LOCATION OF UNDERGROUND STRUCTURES AS SHOWN ARE BASED ON THE BEST INFORMATION AVAILABLE BUT NO GUARANTEE IS GIVEN THAT ALL EXISTING UTILITIES ARE SHOWN OR THAT THE GIVEN LOCATIONS ARE EXACT. CONFIRMATION OF EXISTENCE AND EXACT LOCATION OF ALL SERVICES MUST BE OBTAINED FROM THE INDIVIDUAL UTILITIES BEFORE PROCEEDING WITH CONSTRUCTION.

B.M. 51-049	90R570-N. SIDE WELLINGTON CRES. & QUEENSTON ST.
ELEV. 233.099m	(BRASS PLUG IN 10.8m CONC. PILE, 4.1m E. OF N.L. OF QUEENSTON ST. PRODUCED FROM THE S. & 2.3 S. OF THE N.L. OF WELLINGTON CRES.)
0	ISSUED FOR TENDER 06/05/25 CR
A	ISSUED FOR REVIEW 06/04/28 CR
NO.	REVISIONS DATE BY

KGS GROUP CONSULTING ENGINEERS & PROJECT MANAGERS
WINNIPEG (204) 896-1299
THUNDER BAY (807) 345-2233

DESIGNED BY	RO	CHECKED BY	CR
DRAWN BY	DW	APPROVED BY	
HOR. SCALE:	1:250	RELEASED FOR CONSTRUCTION:	
VERTICAL:	1:10	DATE	09/02/06

ENGINEER'S SEAL

M.C. ROWBOTHAM
REGISTERED PROFESSIONAL ENGINEER
22679

CONSULTANT DRAWING NO.
06-0107-05

THE CITY OF WINNIPEG
PUBLIC WORKS DEPARTMENT
ENGINEERING SERVICES DIVISION

PROJECT TITLE
2006 ALLEY RENEWAL PROGRAM
BROCK ST./QUEENSTON ST. ALLEY
ACADEMY AVE. TO WELLINGTON CR.
STA. 3+50.0 TO STA. 3+89.9

SHEET OF
03 OF **14**

COMPUTER FILE NAME
06-0107-05

CITY DRAWING NUMBER
0003

P:\PROJ\2006\06-107-05\MUN\DWGS\BROCK-QUEENSTON ALLEY\BROCK-DWG\BROCK-QUEENSTON-PLAN.DWG