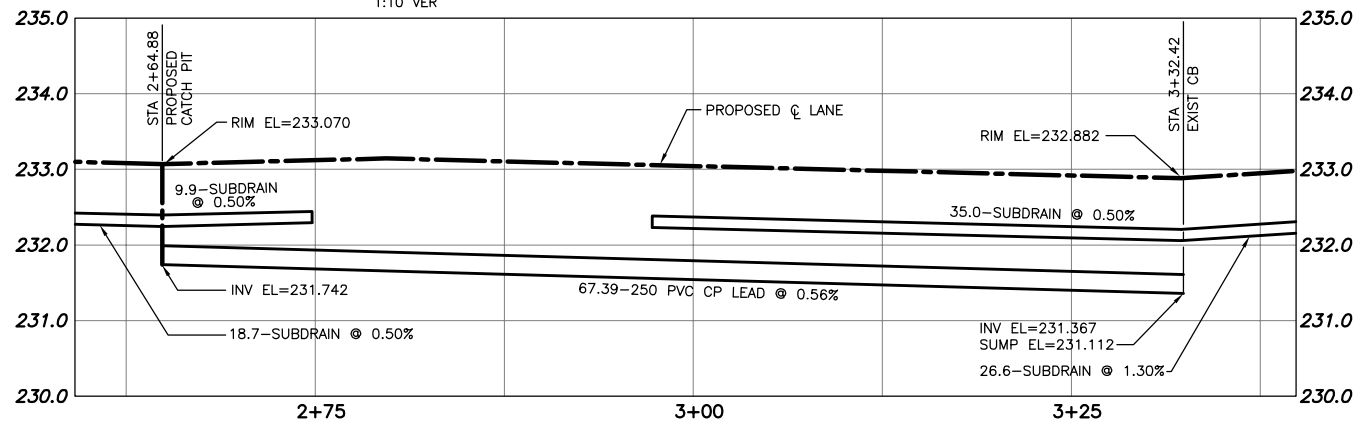


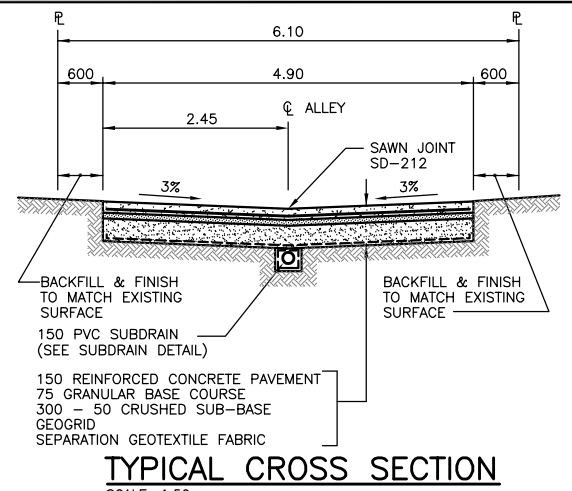
ALLEY PAVEMENT PROFILE

SCALE: 1:250 HOR
1:10 VER



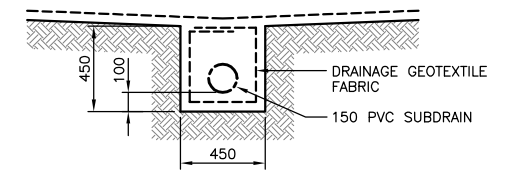
CATCH PIT & CATCH PIT LEAD PROFILE

SCALE: 1:250 HOR
1:50 VER



TYPICAL CROSS SECTION

SCALE: 1:50



SUBDRAIN DETAIL

SCALE: 1:20

NOTE:

- STATION CHAINAGE IS BASED ON CENTERLINE OF ALLEY RIGHT OF WAY.
- ADJUST MH AND CB RIMS TO NEW GRADES.
- PLUG SUBDRAINS AT TERMINAL ENDS.
- REGRADE EXISTING PRIVATE SIDEWALKS AS REQUIRED.
- INSTALLATION OF LIP CURBS AND THEIR EXTENTS TO BE DETERMINED BY THE CONTRACT ADMINISTRATOR
- LIGHT STANDARDS, HYDRO POLES AND ANCHORS MAY REQUIRE TEMPORARY SUPPORT/REMOVAL OR REPLACEMENT AT THE CONTRACTOR'S EXPENSE.
- ISOLATE ALL POLES, BASES AND PILES WITHIN ALLEY RIGHT OF WAY (SD-228C)
- AVOID DAMAGE TO EXISTING TREES WITHIN THE LIMITS OF CONSTRUCTION.



SCALE: 1:250 METRIC A1
1:500 METRIC A3

WARNING

IF POWER EQUIPMENT OR EXPLOSIVES ARE TO BE USED FOR EXCAVATION ON THIS PROJECT THE CONTRACTOR MUST:
1) NOTIFY THE GAS COMPANY OF THE PROPOSED LOCATION OF EXCAVATION.
2) TAKE PRECAUTION TO AVOID DAMAGE TO GAS COMPANY INSTALLATIONS.
SEE PROVINCIAL REGULATION 210/72 FOR DETAILS.

METRIC

WHOLE NUMBERS INDICATE MILLIMETRES
DECIMALIZED NUMBERS INDICATE METRES

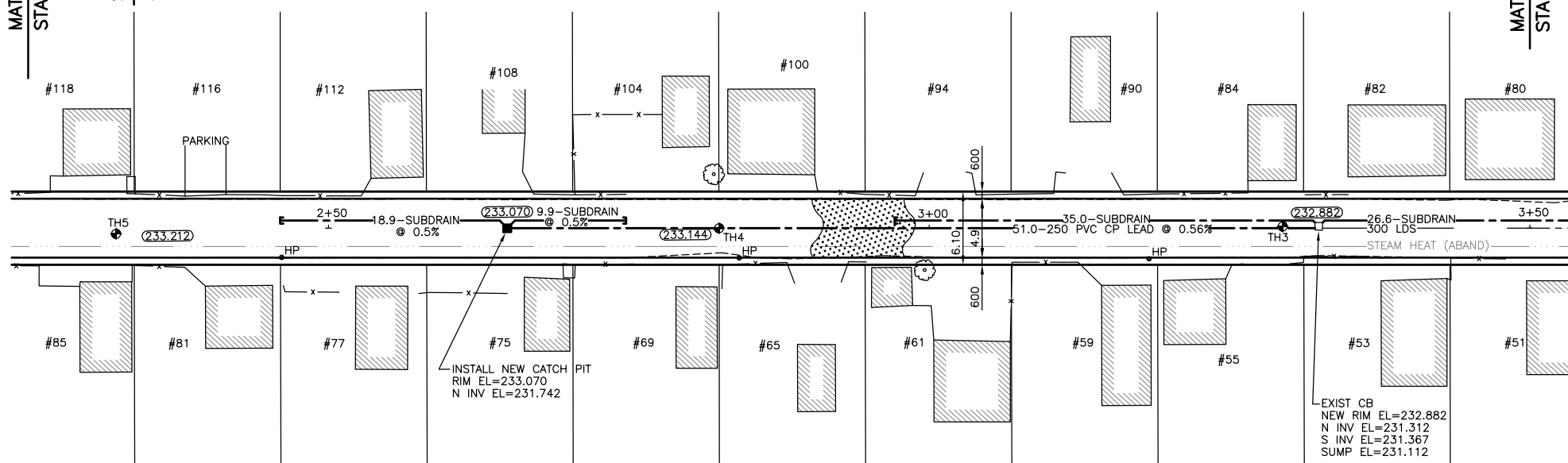
PHASE 3
PHASE 2
MATCH LINE STA 2+25
STA 2+36.57
MATCH LINE STA 3+50

BROCK STREET

QUEENSTON STREET

ALLEY PAVEMENT PLAN

SCALE: 1:250 HOR
1:10 VER



300 LBS	LAND DRAINAGE SEWER	300 LBS		TEST HOLE					
250 WWS	WASTE WATER SEWER	250 WWS		GUY WIRE					
	GAS			LIGHT STANDARD					
	HYDRO			BACK OF CURB					
	M.T.S.			CONCRETE					
150 WM	WATERMAIN	150 WM		ASPHALT					
	HYDRANT			SIDEWALK					
	VALVE			PROPERTY LINE					
	MANHOLE			SURVEY BAR					
	CATCH BASIN			GEODETTIC BENCHMARK					
	CURB INLET			ELEVATION					
	POLES								
EXISTING	LEGEND-PLAN	PROPOSED	EXISTING	LEGEND-PLAN	PROPOSED	EXISTING	LEGEND-PROFILE	PROPOSED	

LOCATION APPROVED UNDERGROUND STRUCTURES

DATE

NOTE:
LOCATION OF UNDERGROUND STRUCTURES AS SHOWN ARE BASED ON THE BEST INFORMATION AVAILABLE BUT NO GUARANTEE IS GIVEN THAT ALL EXISTING UTILITIES ARE SHOWN OR THAT THE GIVEN LOCATIONS ARE EXACT. CONFIRMATION OF EXISTENCE AND EXACT LOCATION OF ALL SERVICES MUST BE OBTAINED FROM THE INDIVIDUAL UTILITIES BEFORE PROCEEDING WITH CONSTRUCTION.

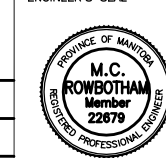
B.M. 51-049
ELEV. 233.099m

0	ISSUED FOR TENDER	06/05/25	CR
A	ISSUED FOR REVIEW	06/04/28	CR
NO.	REVISIONS	DATE	BY

KGS GROUP
CONSULTING ENGINEERS & PROJECT MANAGERS
WINNIPEG (204) 896-1209
THUNDER BAY (807) 345-2233

DESIGNED BY	RO	CHECKED BY	CR
DRAWN BY	DW	APPROVED BY	
HOR. SCALE:	1:250	RELEASED FOR CONSTRUCTION:	
VERTICAL:	1:10	DATE	

ENGINEER'S SEAL



CONSULTANT DRAWING NO.
06-0107-05

THE CITY OF WINNIPEG
PUBLIC WORKS DEPARTMENT
ENGINEERING SERVICES DIVISION

PROJECT TITLE
2006 ALLEY RENEWAL PROGRAM
BROCK ST./QUEENSTON ST. ALLEY
ACADEMY AVE. TO WELLINGTON CR.
STA. 2+25.0 TO STA. 3+50.0

SHEET OF
02 OF **14**

COMPUTER FILE NAME
06-0107-05

CITY DRAWING NUMBER
0002