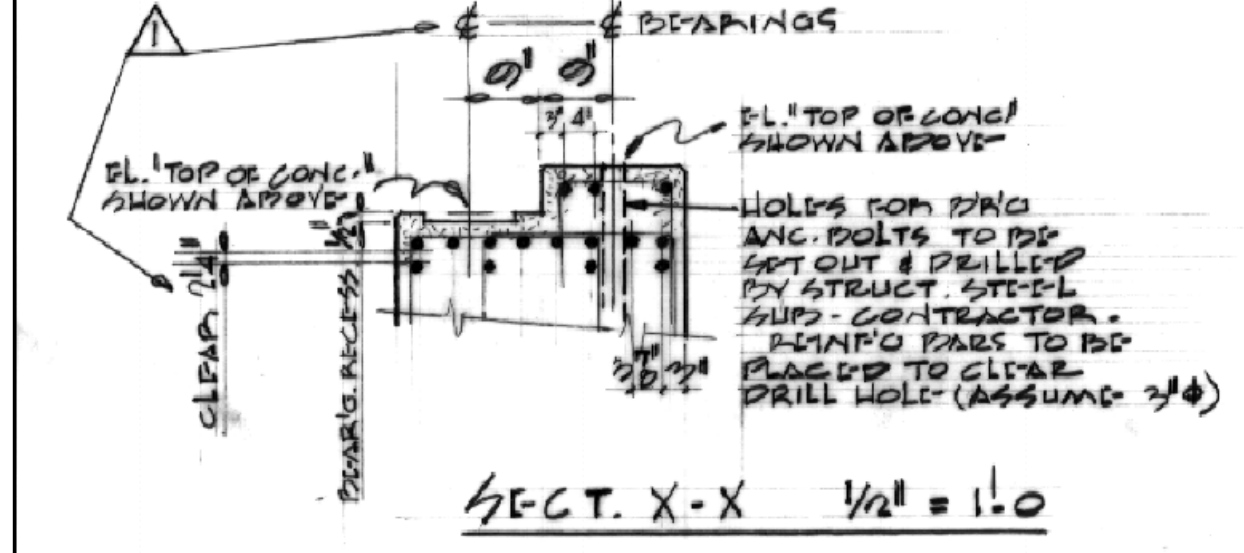
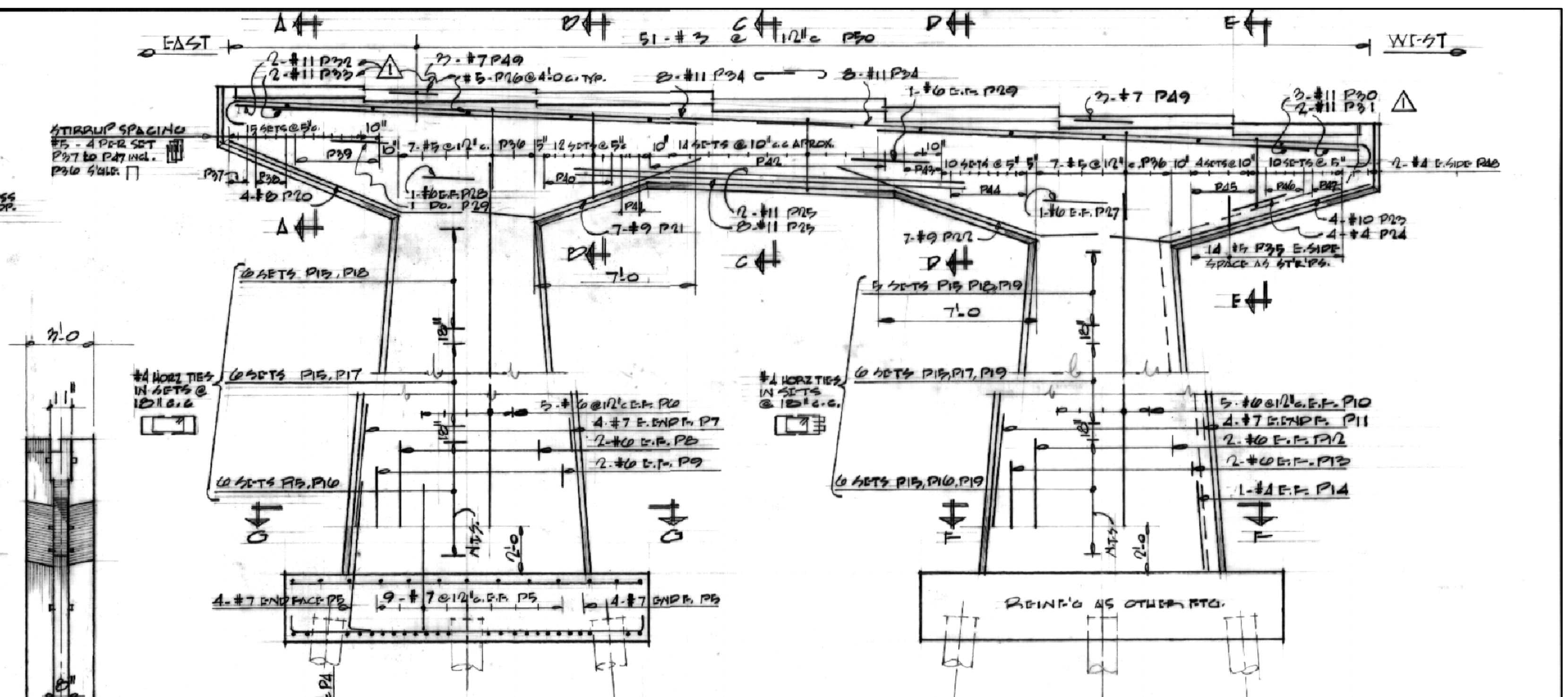


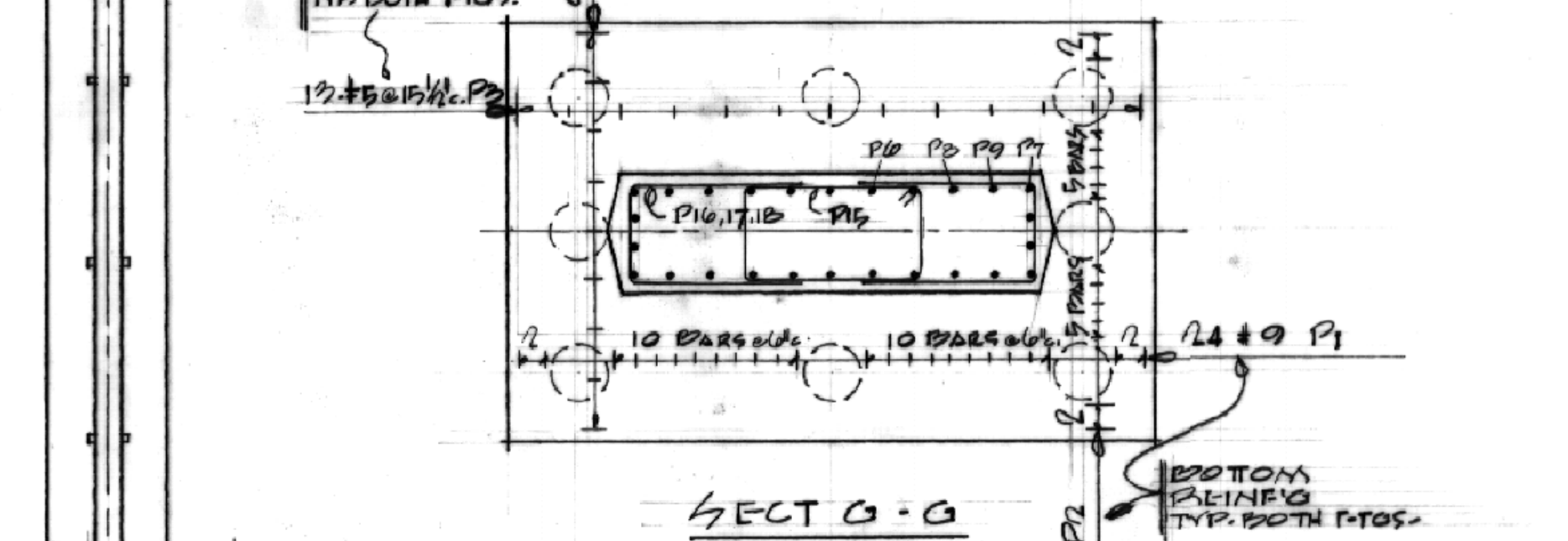
ELEVATION OF PIER 6-12 1/2" = 1.0
 SEE ENG. D-5000-19 FOR DETAILS OF CHASE, PIPE SUPPORT POCKET ETC.



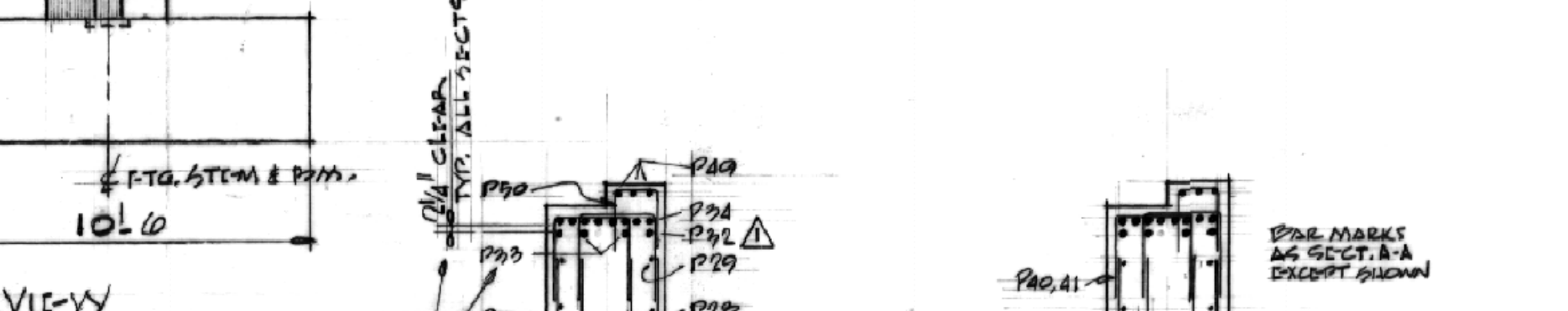
SECTION X-X 1/2" = 1.0



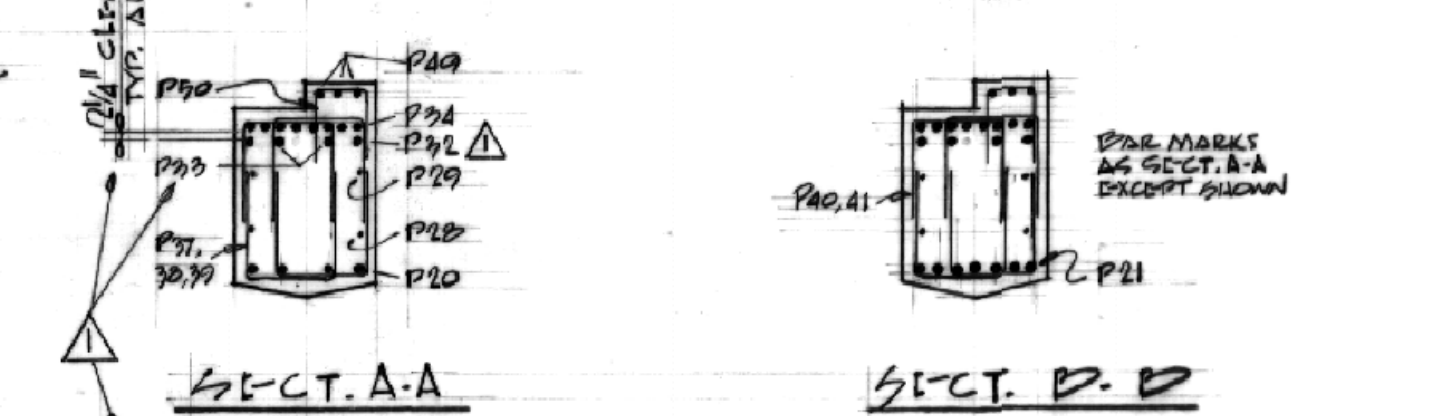
REINFORCING PIER 6-12 1/2" = 1.0



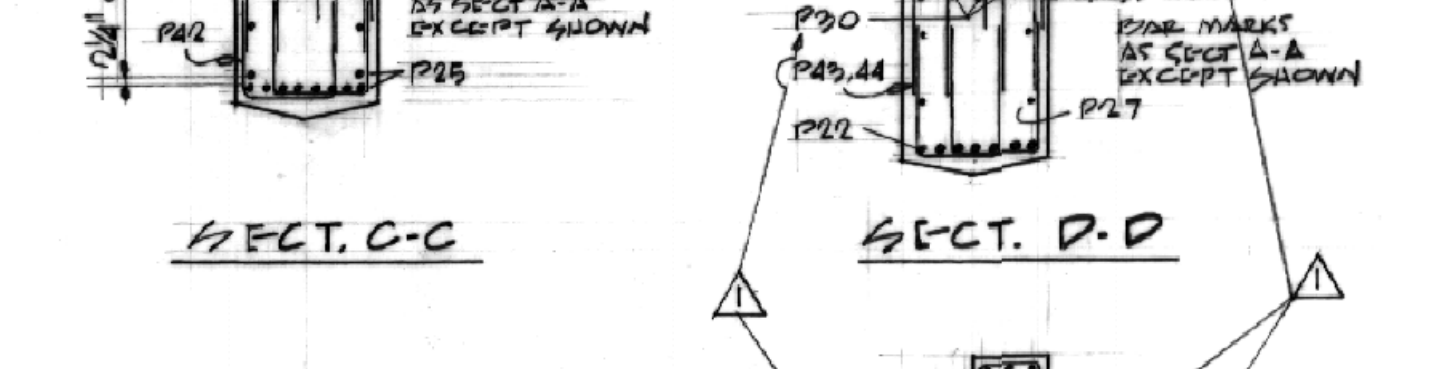
SECTION G-G



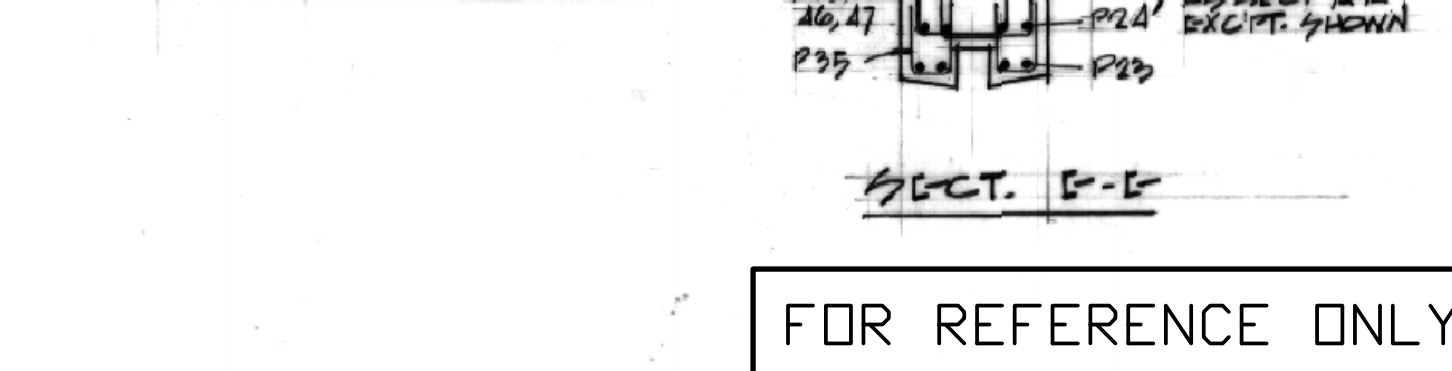
END VIEW



SECTION A-A



SECTION B-B



SECTION C-C



SECTION D-D

SECTION E-E

NOTE:
 CONST. JOINTS OTHER THAN THOSE SHOWN MUST BE APPROVED BY THE ENGINEER, SUCH JOINTS SHALL BE FORMED AND TO GIVE A CLEAN STRAIGHT LINE JOINT. MULTIPLE REINFORCING ELEMENTS SHALL BE USED IN ALL CONC. PRE-CAST PARTS.
 FORM REINFORCING SHALL BE 2" DIA. R. 5000-111 CLEAR CONC. COVER; 2" IN FTG. & STEM, 1" IN CAP. DIA. APPROXIMATELY 1" E.F.; EACH FACE.
 CHAMFER ON ALL EXPOSED CORNERS OF STEEL DIA. EXCEPT CHASE DEEPENING GROOVES, SOUTH SIDE TO BE CAST UP TO 1/2" HIGHER THAN PLYS. GIVEN HEREON, SEE CONC. SPEC. FOR FURTHER INSTRUCTIONS.



DATE	ISSUE No.	REV. No.	DESCRIPTION	DRAWN BY
Jan 1962	1		AS-BUILT	M.M.C.
Apr 1962	2		FOR CONSTRUCTION	1/2
Apr 6 1962			REVISIONS ADDED TO DRAWING FOR MARKS ON SECT. A-A, D.D. E.F. & ON ELEVATION.	AM
			FOR TENDER	E.V.M.

ISSUE OR REVISION

METROPOLITAN CORPORATION OF GREATER WINNIPEG
 STREETS AND TRANSIT DIVISION

ST. JAMES BRIDGE AND INTERCHANGE
 LAYOUT AND REINFORCEMENT
 PIER 6 - 12

TEMPLETON ENGINEERING COMPANY
 PROFESSIONAL ENGINEERS
 WINNIPEG, MANITOBA

IN ASSOCIATION WITH
 A. D. MARGISON AND ASSOCIATES LIMITED
 CONSULTING PROFESSIONAL ENGINEERS
 TORONTO CANADA

APPROVED: *[Signature]*
 DIRECTOR, STREETS AND TRANSIT DIVISION

DRAWN BY: *[Signature]*
 CHECKED: *[Signature]*
 FILE No. 1968-A-321
 SHEET No.

DATE: 14th MARCH 1962
 SCALE: AS SHOWN
 DWG. No. B-5000-53

FOR REFERENCE ONLY