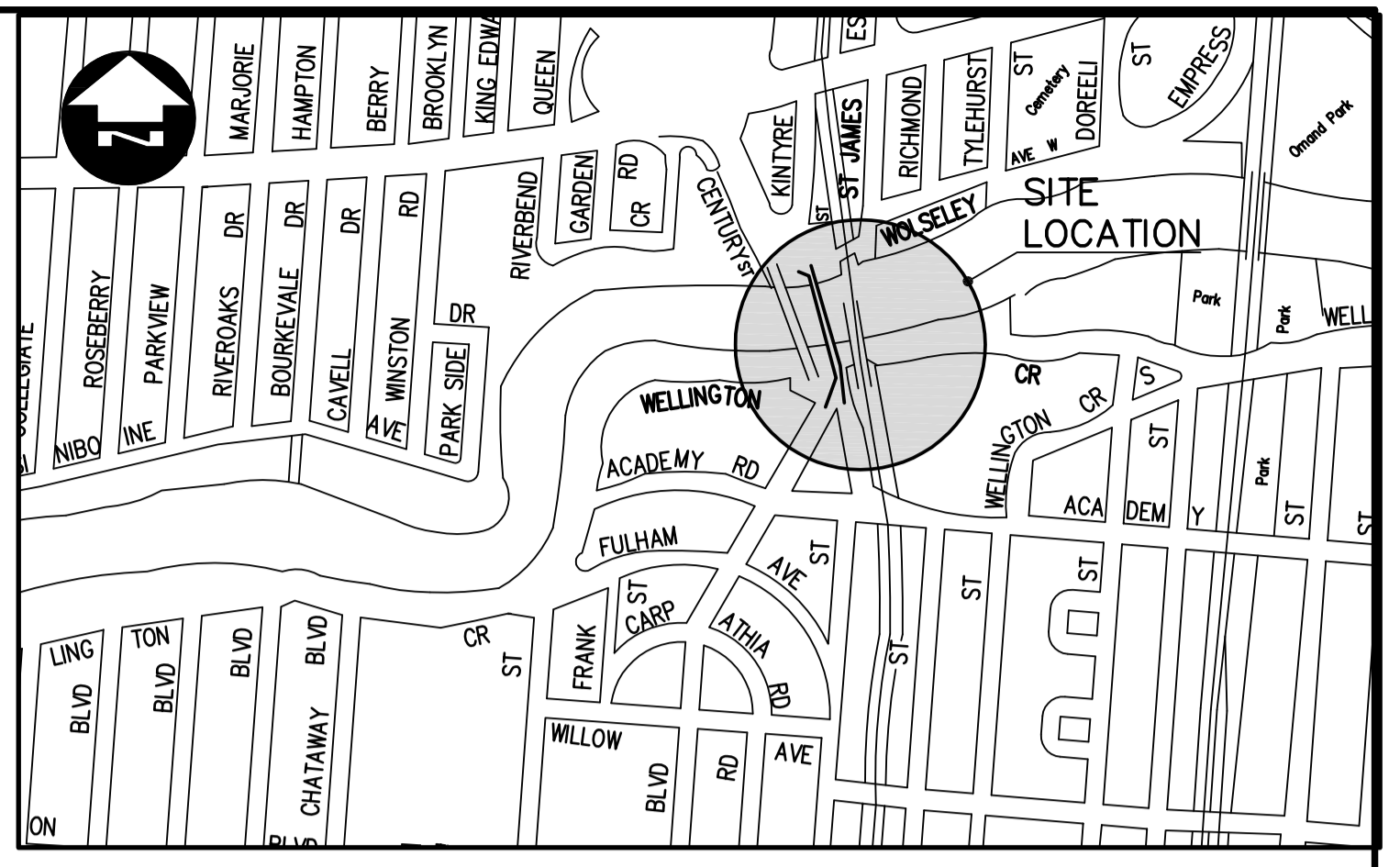
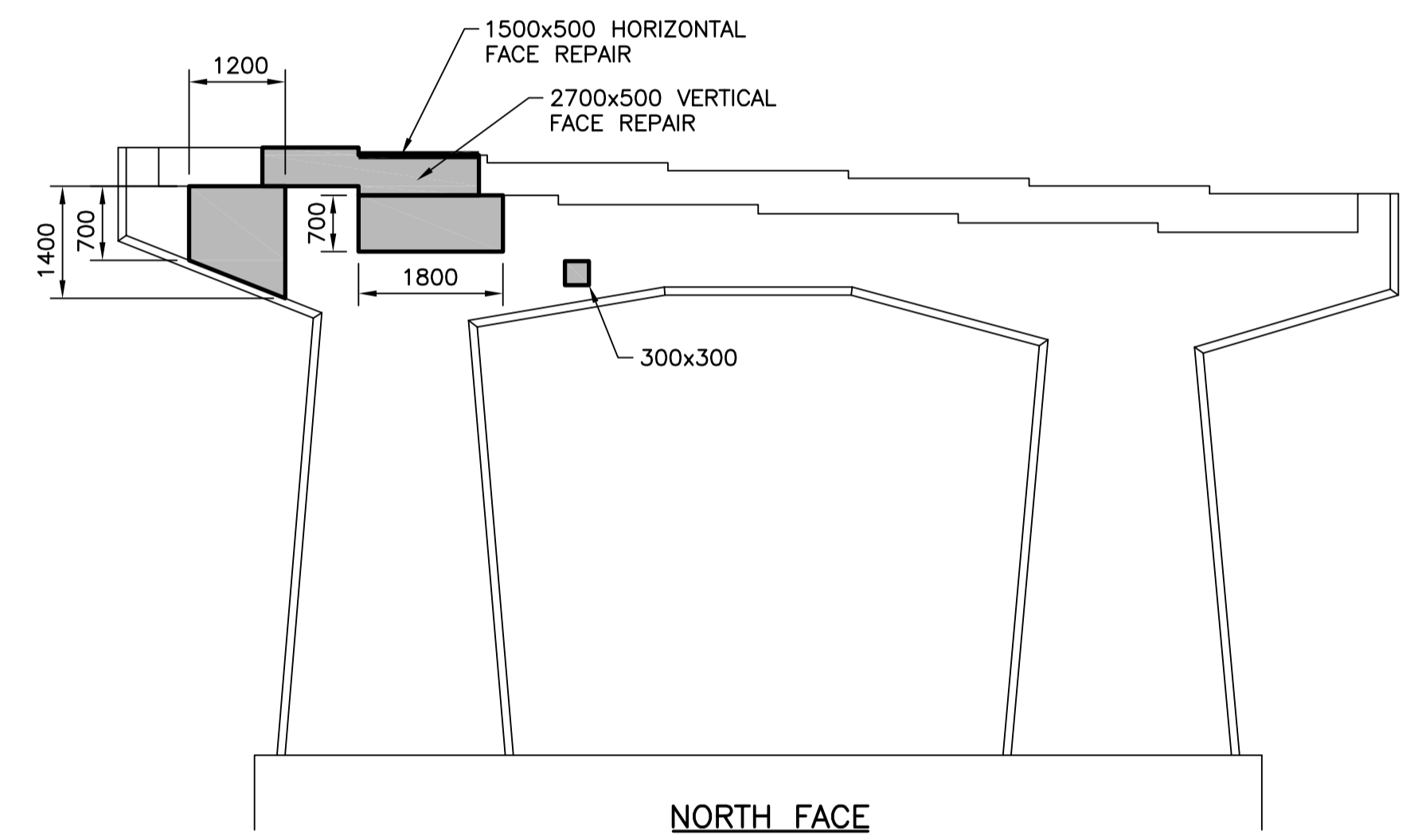


PLAN
N.T.S.

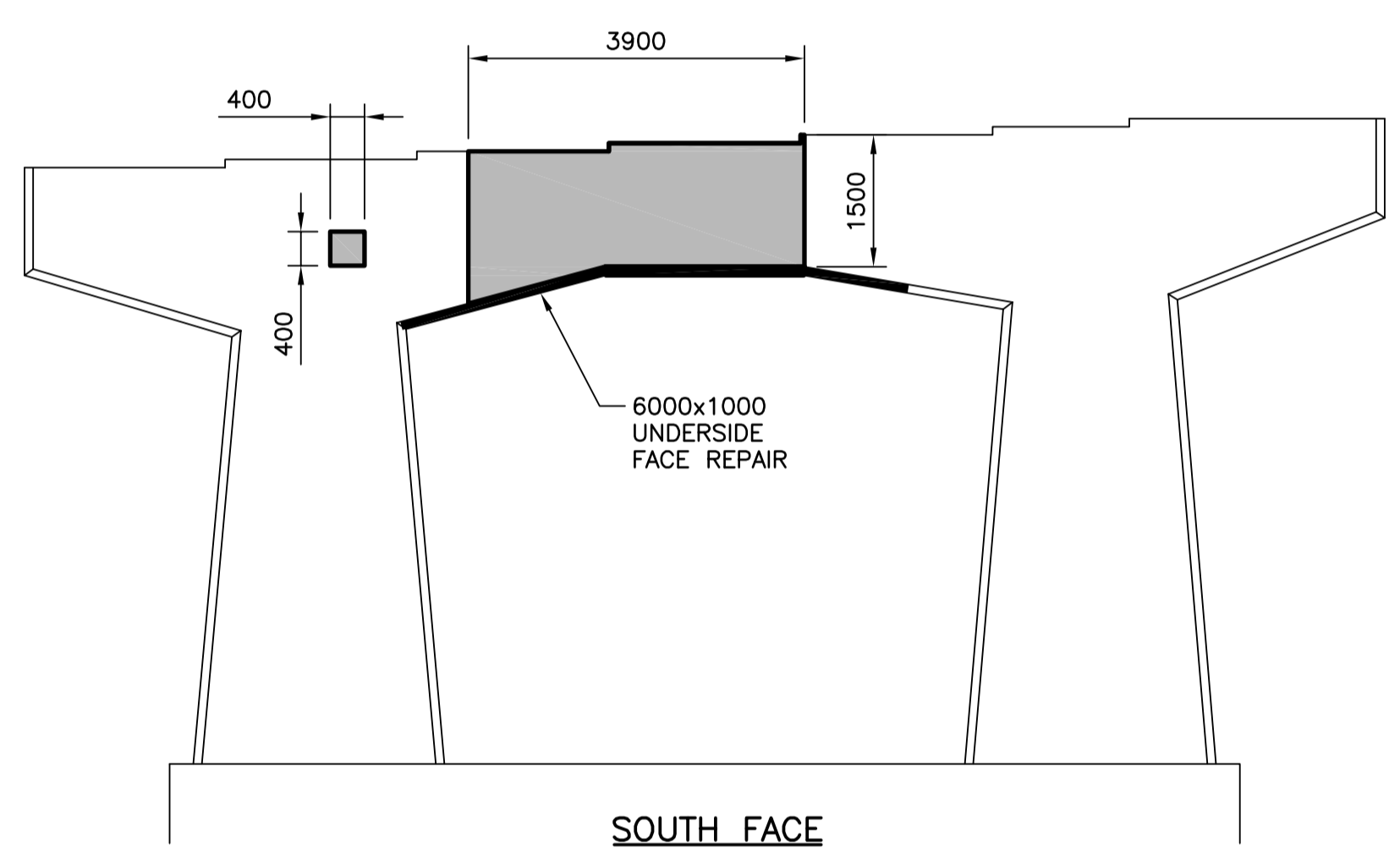
APPROX. DELAMINATION AREA SUMMARY			
LOCATION	VERTICAL REPAIRS (m ²)	HORIZONTAL REPAIRS (m ²)	UNDERSIDE REPAIRS (m ²)
PIER 11 SOUTH FACE	3.97		
PIER 11 NORTH FACE	2.71		
PIER 6/12 SOUTH FACE	4.45		6.0
PIER 6/12 NORTH FACE	3.17	0.38	
PIER 13 SOUTH FACE	10.48		
PIER 13 NORTH FACE	4.55	1.56	1.32
TOTAL	29.33	1.94	7.32



LOCATION PLAN

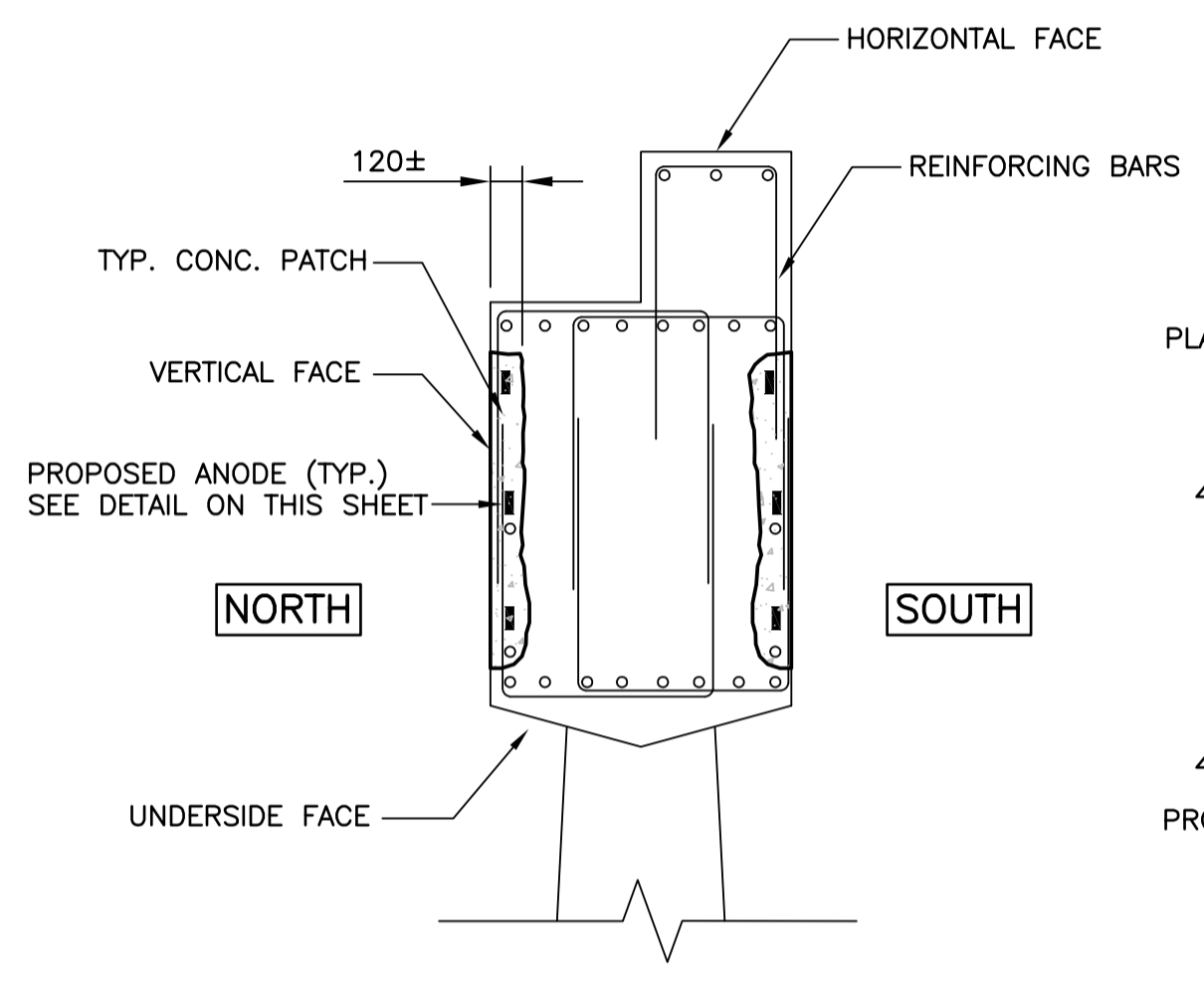


NORTH FACE

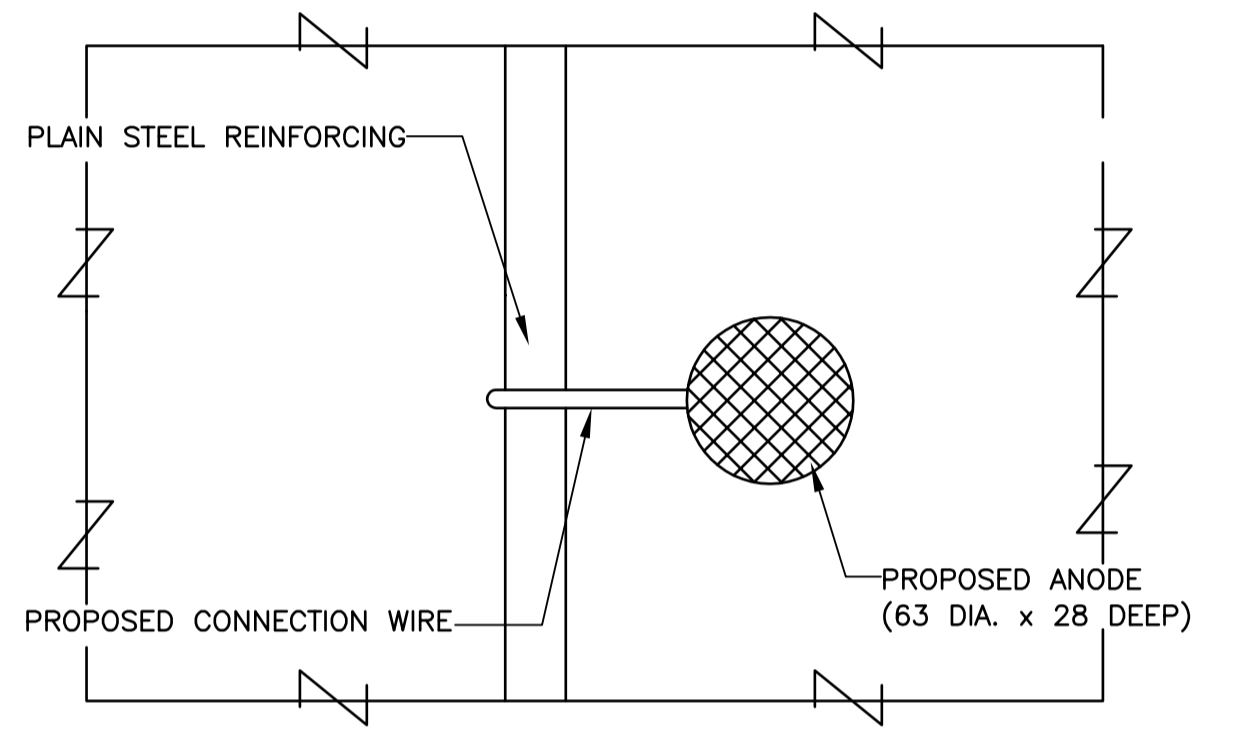


SOUTH FACE

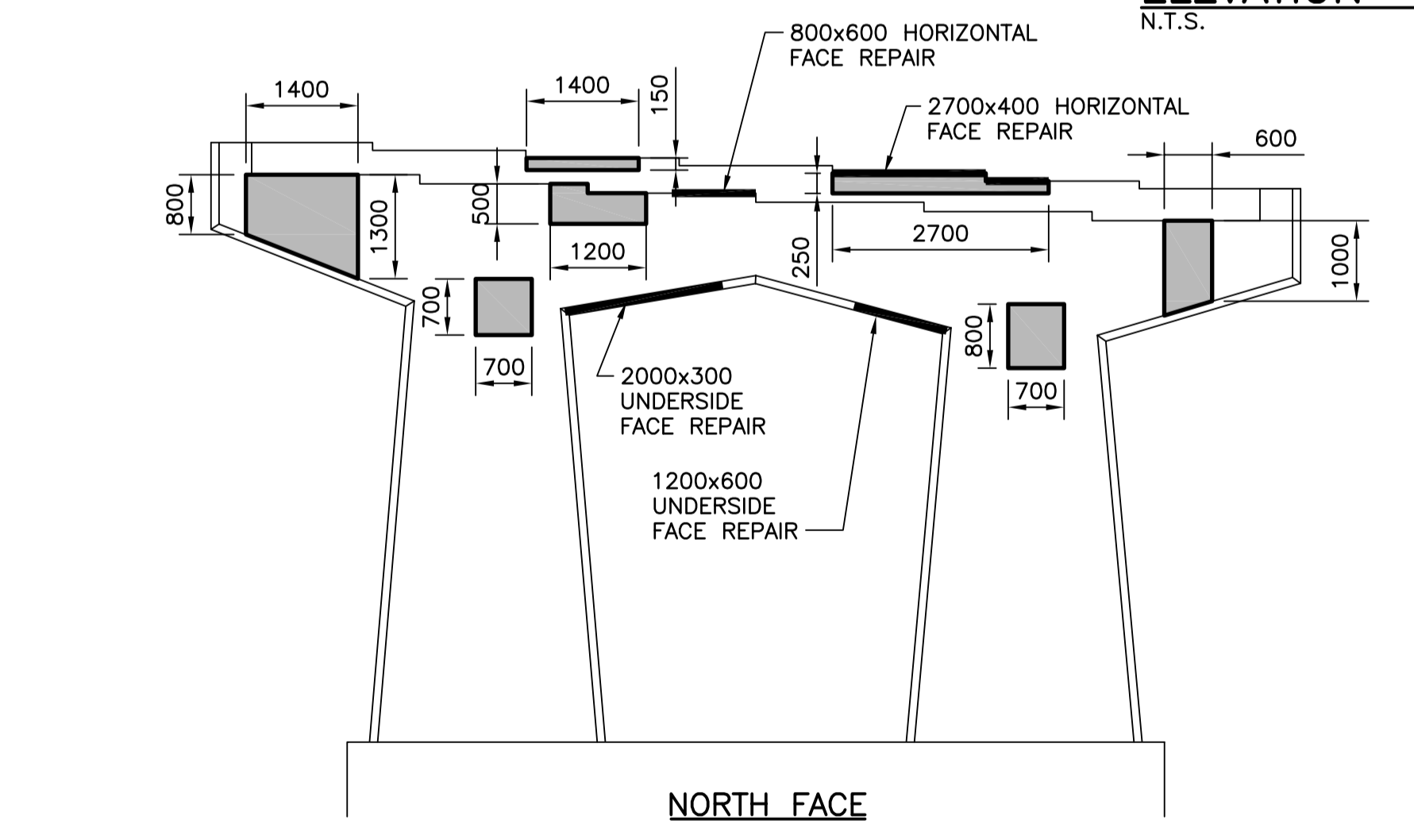
ELEVATION - PIER 6/12
N.T.S.



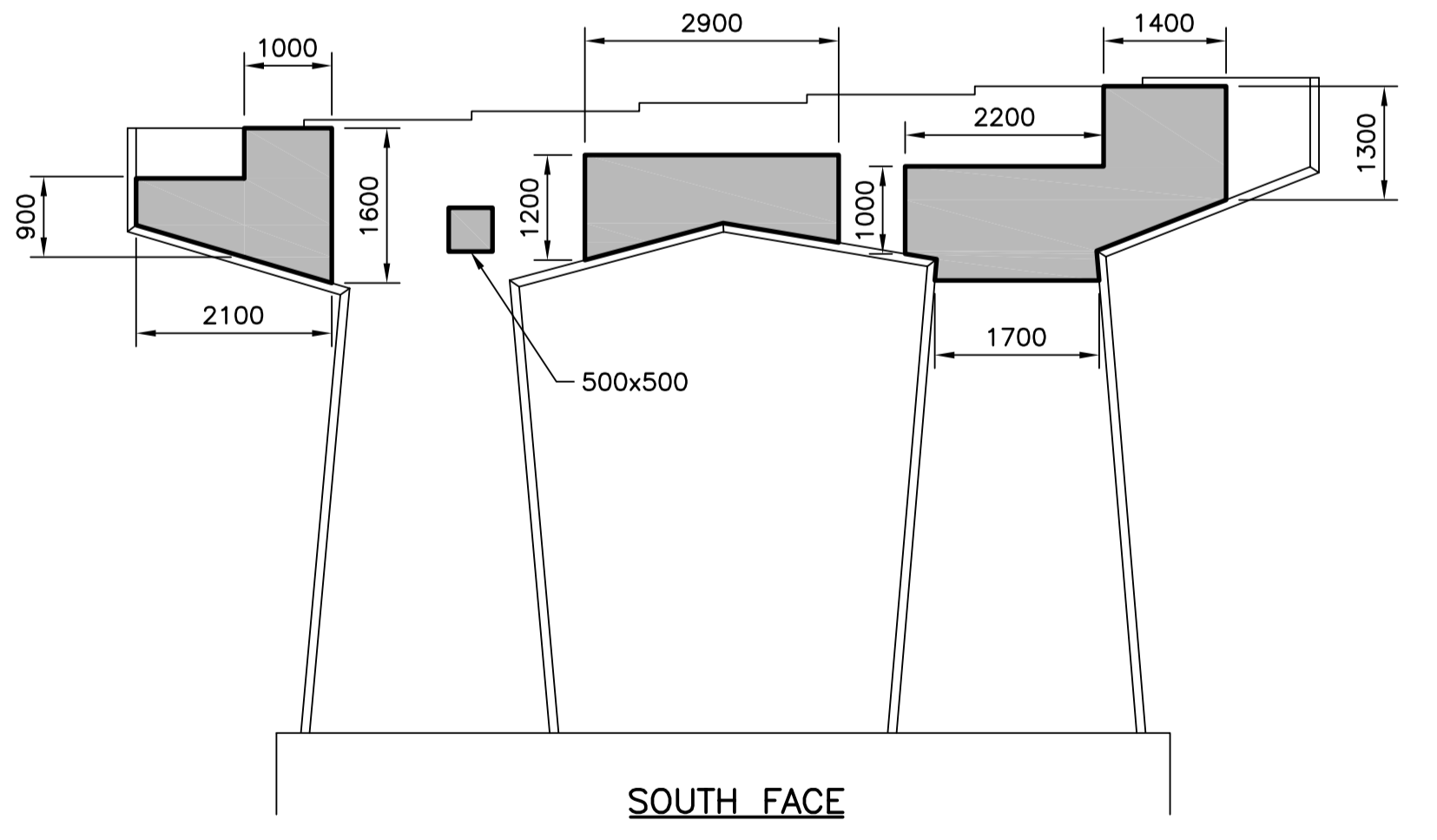
TYPICAL PIER CROSS-SECTION
N.T.S.



ANODE TO REBAR TYP. CONNECTION DETAIL
N.T.S.

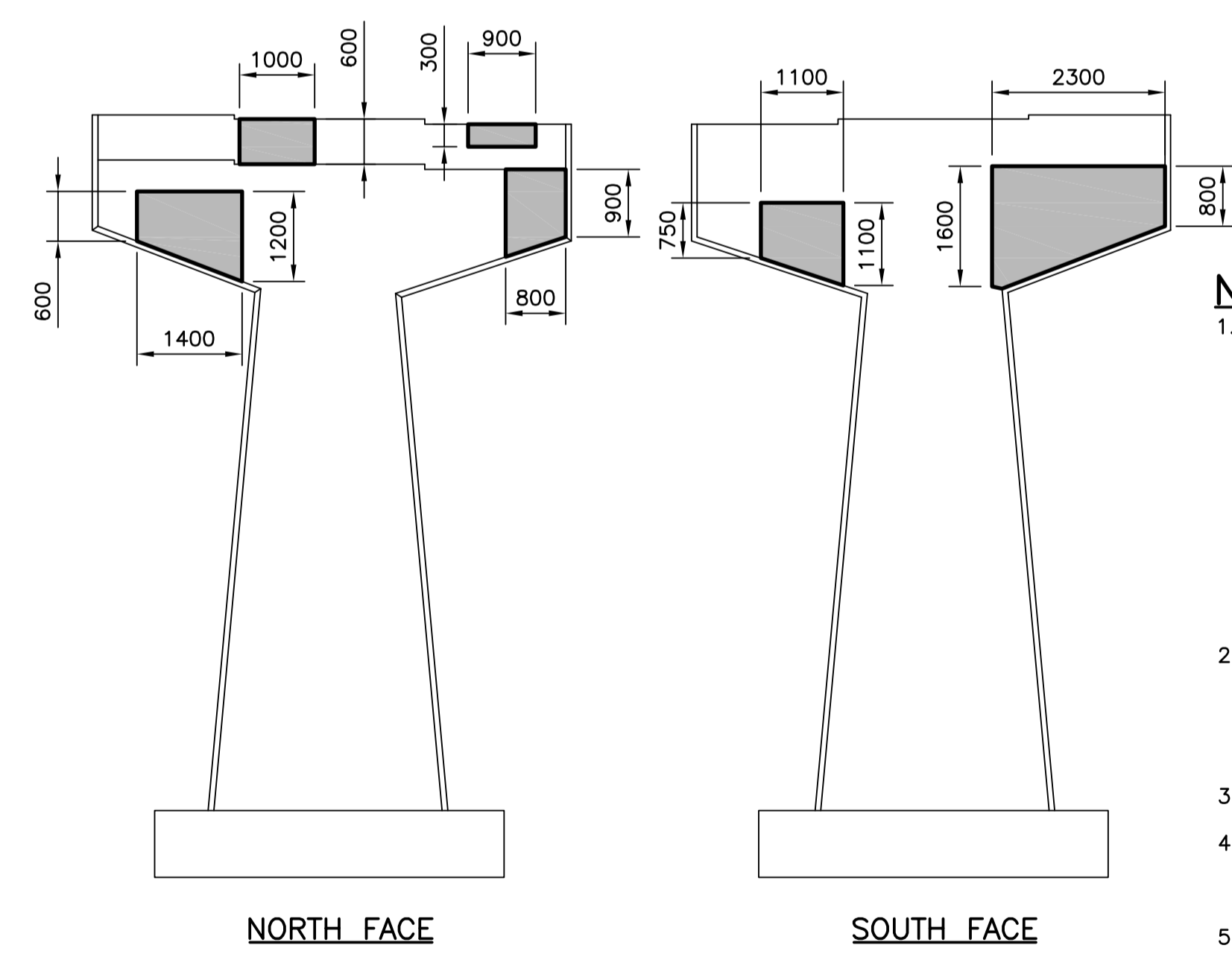


NORTH FACE



SOUTH FACE

ELEVATION - PIER 13
N.T.S.



NORTH FACE

SOUTH FACE

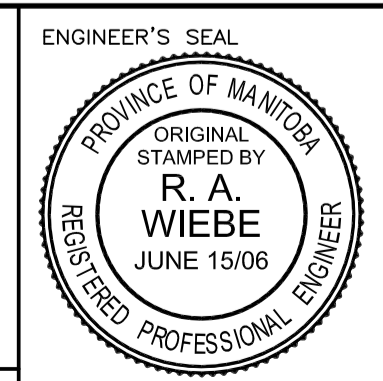
ELEVATION - PIER 11
N.T.S.

- NOTES:**
- REMOVE ALL CONCRETE FROM THE DESIGNATED REPAIR AREAS TO A DEPTH OF 120MM ± 10 MM. SAWCUT PERIMETER TO A MINIMUM DEPTH OF 25 MM. THE SPECIFIED DEPTH OF REMOVAL SHALL ACHIEVE A 25 MM CLEAR DISTANCE BETWEEN THE EXISTING REINFORCING STEEL AND THE PREPARED CONCRETE SURFACE TO ALLOW THE BARS TO BE FULLY CLEANED AND NEW CONCRETE COMPLETELY ENCAPSULATE THEM. IF THIS CANNOT BE ACHIEVED WITHIN THE DESIGNATED REPAIR DEPTH, THE CONTRACT ADMINISTRATOR MAY DIRECT ADDITIONAL CONCRETE REMOVAL AS EXTRA WORK.
 - AFTER COMPLETION OF CONCRETE REMOVALS, STEEL SURFACES SHALL BE THOROUGHLY CLEANED BY GRITBLASTING. ALL GRITBLAST MATERIALS SHALL BE BLOWN OUT OF THE REPAIR AREA AND REMOVED OFF SITE.
 - SUPPLY AND INSTALL ANODES.
 - PLACE CONCRETE. ALLOW CONCRETE TO CURE FOR MINIMUM OF 7 DAYS BEFORE FORM REMOVAL.
 - CONCRETE REPAIR MATERIAL MAY BE EITHER ONE OR A COMBINATION OF CONCRETE REPAIR MORTARS, CONVENTIONAL CONCRETE, OR SELF-COMPACTING CONCRETE. REFER TO SPECIFICATION FOR DETAILS.

LEGEND
 APPROX. AREA OF CONCRETE REPAIRS



B.M. ELEV.	DESIGNED BY: M.R.D.
	DRAWN BY: M.R.D.
	CHECKED BY: R.A.W.
	REVIEWED BY: R.A.W.
	SCALE: HORZ. AS SHOWN VERT.
	DATE: JUNE 2006
2 ISSUED FOR TENDER 06/06/15 NBG	AUTHORIZED BY: DATE:
1 ISSUED FOR CITY REVIEW 06/06/13 MRD	ORIGINAL SIGNED BY B. NEIRINCK, P.Eng.
0 ISSUED FOR CITY REVIEW 06/05/19 MRD	CITY BRIDGE ENGINEER
NO. REVISIONS	DATE BY



THE CITY OF WINNIPEG
PUBLIC WORKS DEPARTMENT

2006 BRIDGE MAINTENANCE
ST. JAMES BRIDGE
CONCRETE REPAIRS

PIER 6/12, PIER 11, AND PIER 13

CITY DRAWING NUMBER
B102-06-01
SHEET 1 OF 2

BID OPP NO.
353-2006