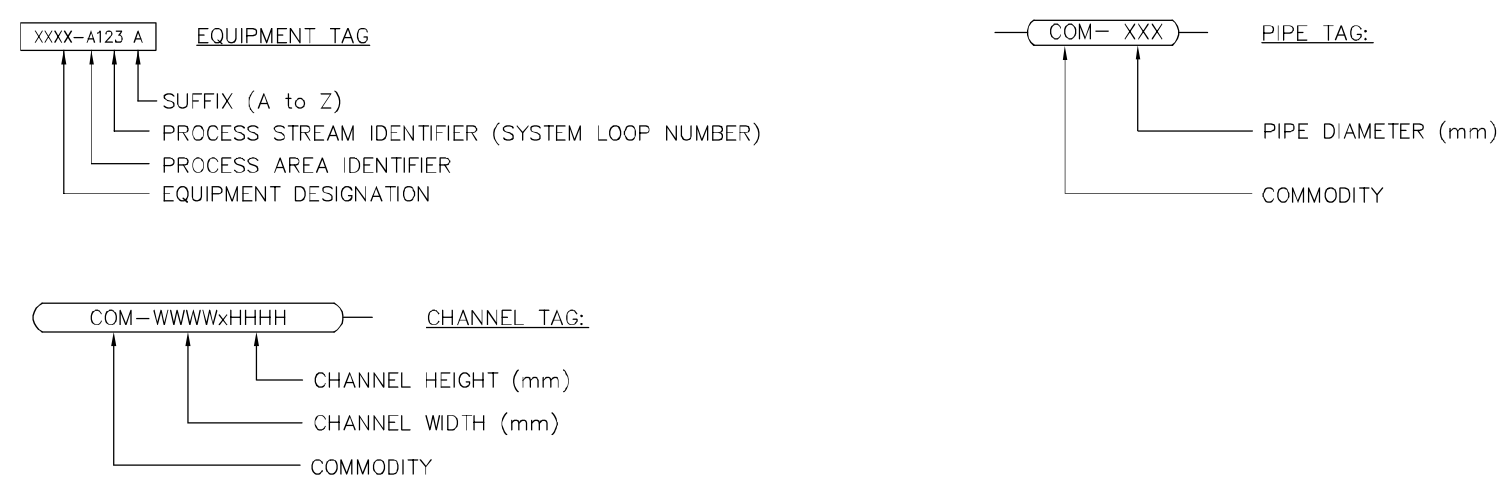


INSTRUMENT IDENTIFICATION TABLE with columns for FIRST-LETTER, SUCCEEDING-LETTERS, MEASURED OR INITIATING VARIABLE, READOUT OR PASSIVE FUNCTION, and OUTPUT FUNCTION.

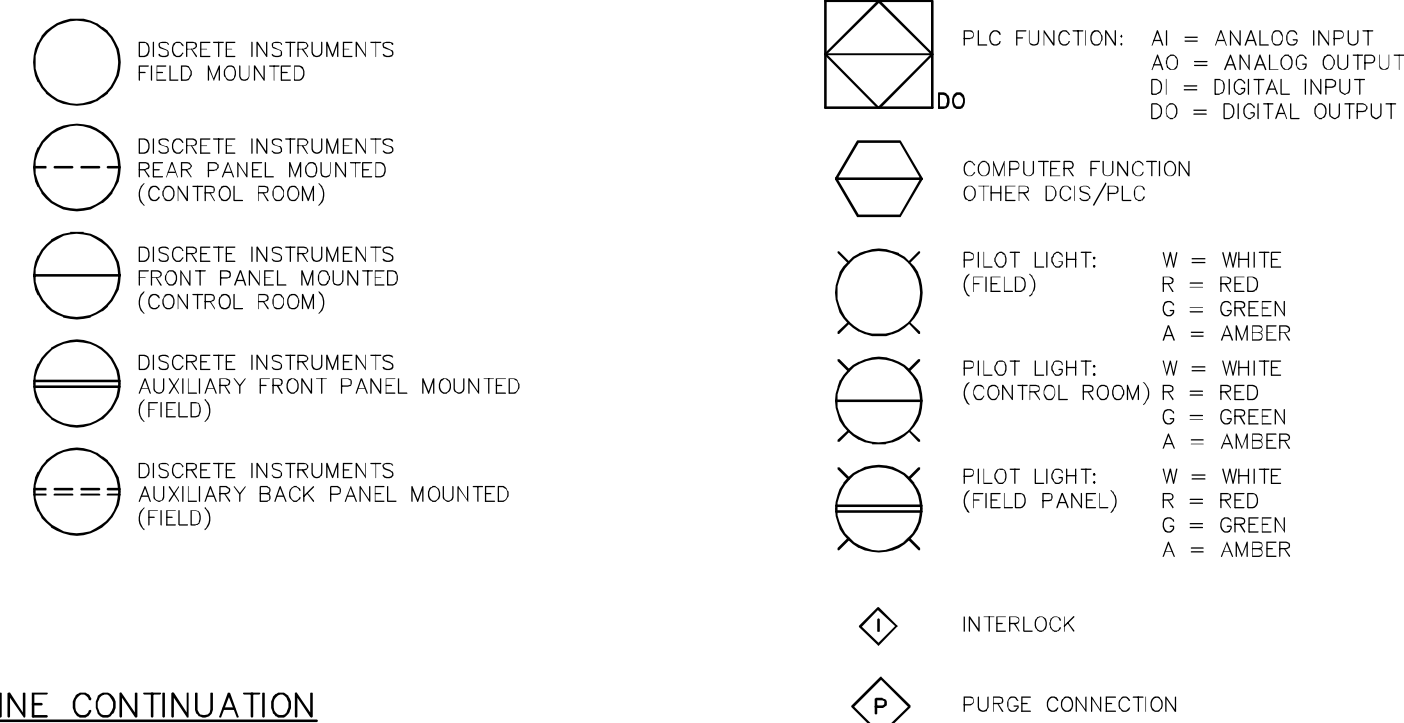
NOTES: 1. IT IS EXPECTED THAT THE TYPE OF ANALYSIS BE DEFINED OUTSIDE THE TAGGING BUBBLE. 2. FIRST LETTER Y IS INTENDED FOR USE WHEN CONTROL OR MONITORING RESPONSES ARE EVENT DRIVEN...

COMMON INSTRUMENT / DEVICE IDENTIFIERS table with columns for ISA IDENTIFIER, INITIATING VARIABLE AND FUNCTION, and corresponding instrument types like ANALYSIS SWITCH, PRESSURE INDICATOR, etc.

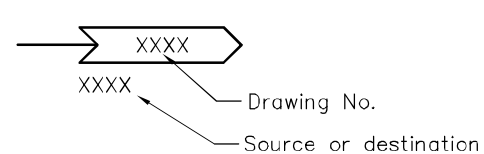
EQUIPMENT IDENTIFICATION AND TAGGING



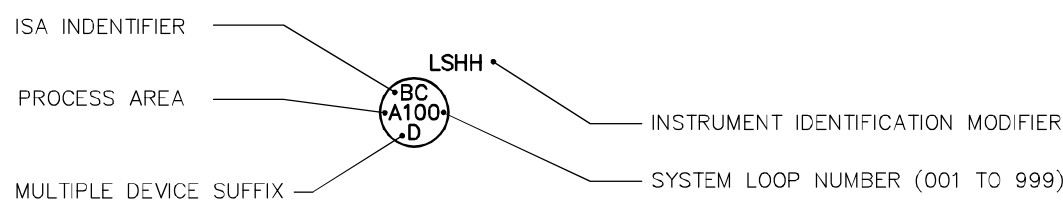
INSTRUMENT SYMBOLS



LINE CONTINUATION



INSTRUMENT DESIGNATION NUMBER



POSITION FORMATS

Table mapping process area identifiers (C, D, E, F, H, I, L, M, Y, O, P, R, S, T, U, V, W, X, Z) to their corresponding descriptions like CHEMICAL FEED, PLANT UTILITIES, and INLET WORKS.

INSTRUMENT IDENTIFICATION MODIFIER

Table listing instrument identification modifiers such as CAH (CONDUCTIVITY ALARM HIGH), COH (COMPUTER/OFF-HAND), and LSH (LEVEL SWITCH HIGH).

PROCESS LINE CODES

COMMODITY

Table listing commodity codes and their descriptions, including AA (AQUA AMMONIA), AGA (ATOMIZING AIR), and COW (COOLING WATER).

PIPE EXPOSURE

Table listing pipe exposure codes: BUR (BURIED), EXP (EXPOSED), SUB (SUBMERGED), ENC (CONCRETE ENCASED).

PIPE MATERIAL

Table listing pipe material codes and descriptions, such as QISP (CAST IRON SOIL PIPE), CLDI (CEMENT LINED DUCTILE IRON), and PCCP (PRESTRESSED CONCRETE CYLINDER).

PRESSURE TESTING

Table listing pressure testing codes: H (HYDROSTATIC), I (IN SERVICE), P (PNEUMATIC), NA (NOT APPLICABLE).

ABBREVIATIONS

Table listing various abbreviations and their meanings, including ACK (ACKNOWLEDGE), ALM (ALARM), and A/M (AUTO/MANUAL).

EQUIPMENT DESIGNATIONS

Table listing equipment designations and their meanings, such as ARV (AIR RELEASE VALVE), ACU (AIR CONDITIONING UNIT), and LJB (LOCAL JUNCTION BOX).

ISSUED WITH BID OPPORTUNITY 35-2006 ADDENDUM 2 DATE: JULY 31, 2007

Professional seals and stamps for APEGG, Earth Tech, and The City of Winnipeg, including project details like 'WATER TREATMENT PLANT GENERAL PLANT SERVICES' and 'MECHANICAL AND ELECTRICAL'.