

LOCATION OF UNDERGROUND STRUCTURES AS SHOWN ARE BASED ON THE BEST INFORMATION AVAILABLE BUT NO GUARANTEE IS GIVEN THAT ALL EXISTING UTILITIES ARE SHOWN OR THAT THE GIVEN LOCATIONS ARE EXACT. CONFIRMATION OF EXISTENCE AND EXACT LOCATION OF ALL SERVICES MUST BE OBTAINED FROM THE INDIVIDUAL UTILITIES BEFORE PROCEEDING WITH CONSTRUCTION.

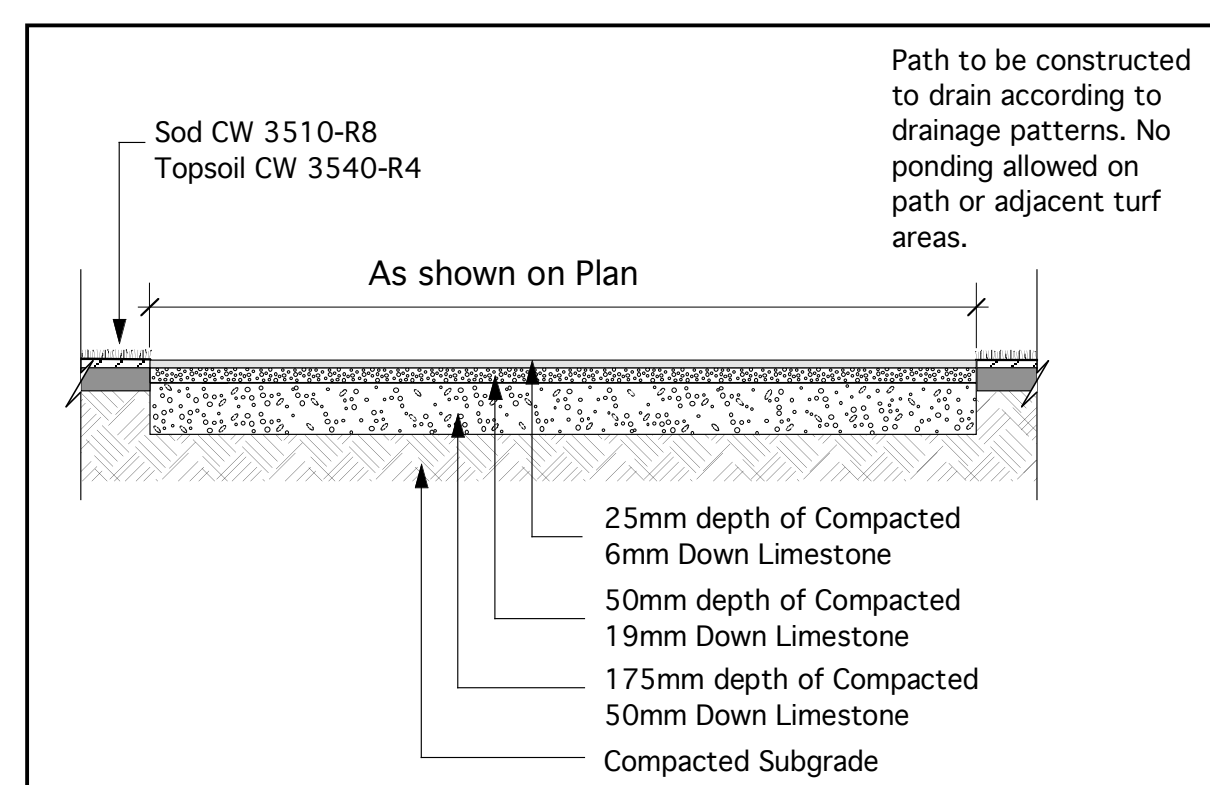
NOTE: DO NOT SCALE - DRAWING PLOT MAY NOT BE AT 100%

DATE ISSUED  
June 1, 2006

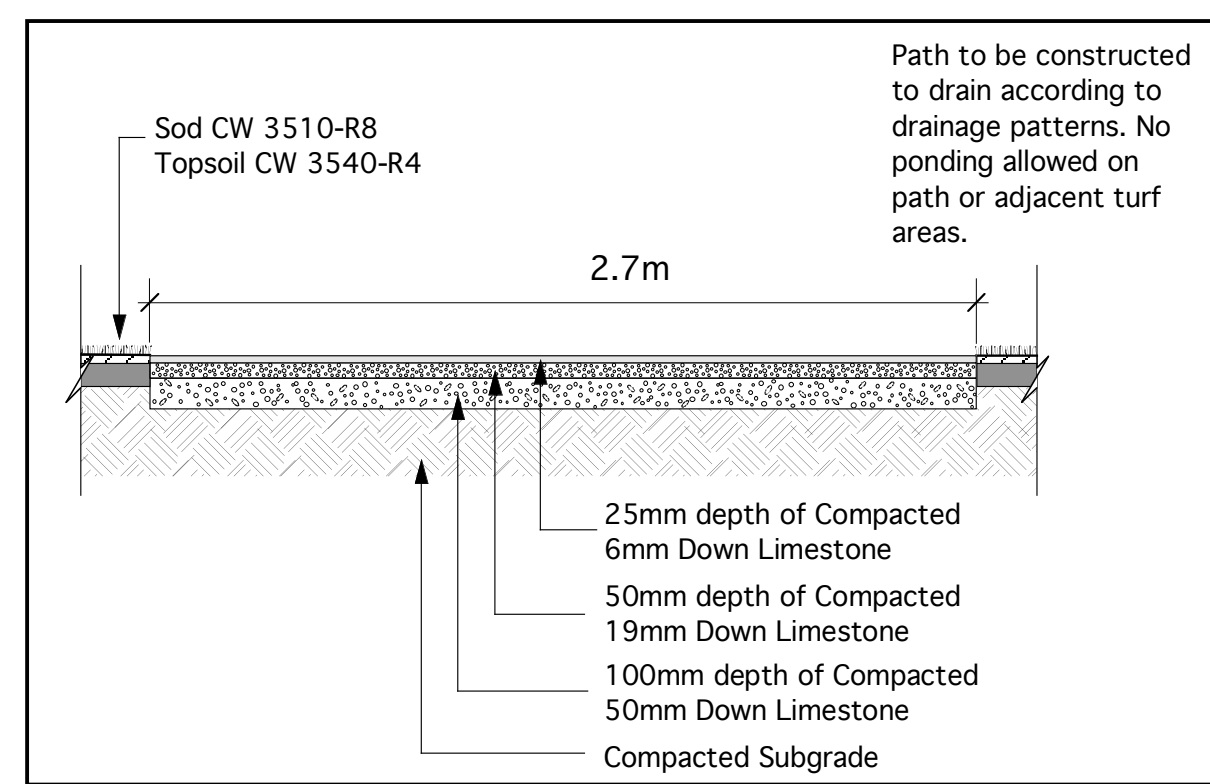
Land Drainage System  
UMA Engineering Ltd.  
0265-356-01

Site Survey - Refer to Drawing L2  
SEG Engineering - Fall 2005

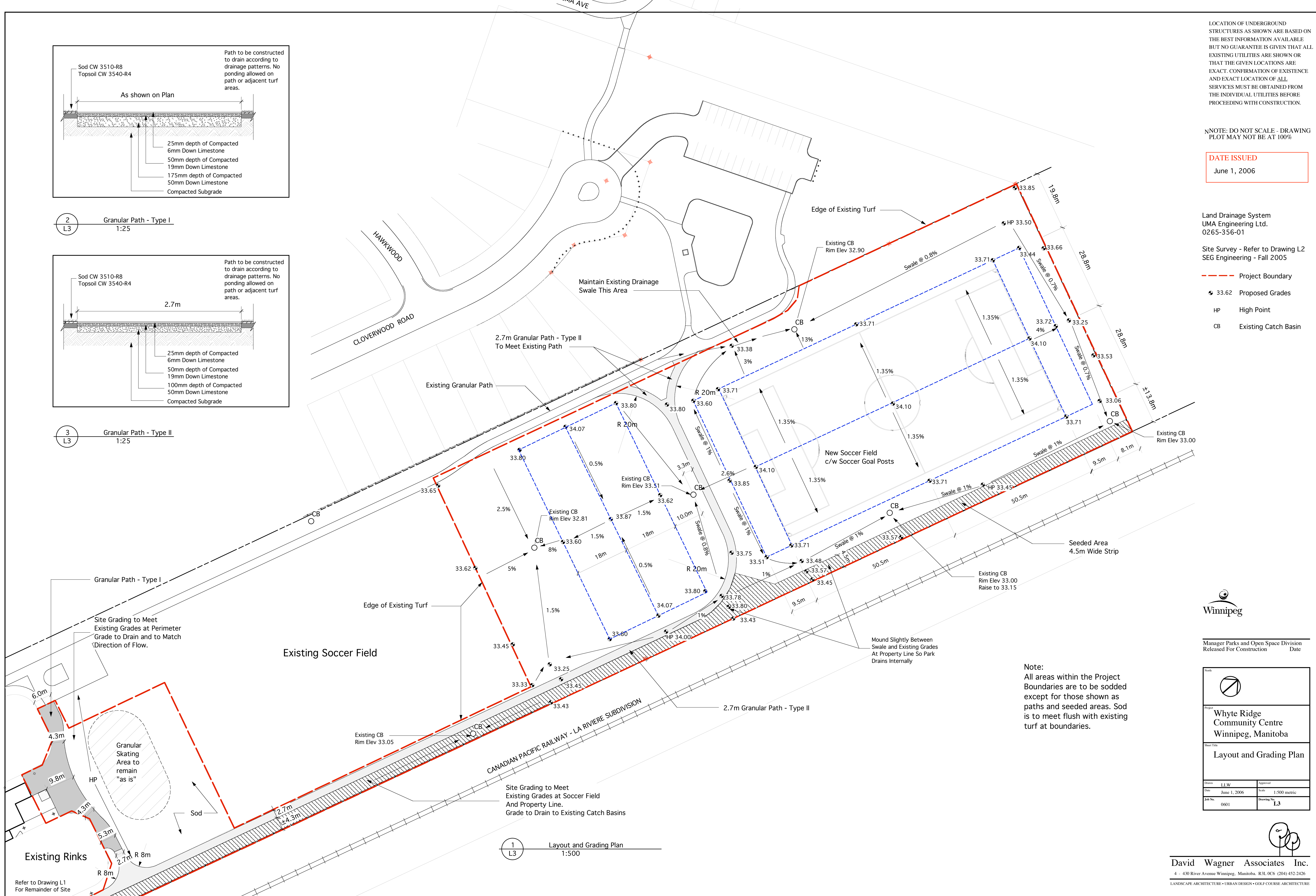
- Project Boundary
- 33.62 Proposed Grades
- HP High Point
- CB Existing Catch Basin



2  
L3 Granular Path - Type I  
1:25



3  
L3 Granular Path - Type II  
1:25



Note:  
All areas within the Project Boundaries are to be sodded except for those shown as paths and seeded areas. Sod is to meet flush with existing turf at boundaries.



Manager Parks and Open Space Division  
Released For Construction Date

Project: Whyte Ridge Community Centre Winnipeg, Manitoba	
Sheet Title: Layout and Grading Plan	
Drawn: L1W	Approved:
Date: June 1, 2006	Scale: 1:500 metric
Job No: 0601	Drawing No: L3

1  
L3 Layout and Grading Plan  
1:500