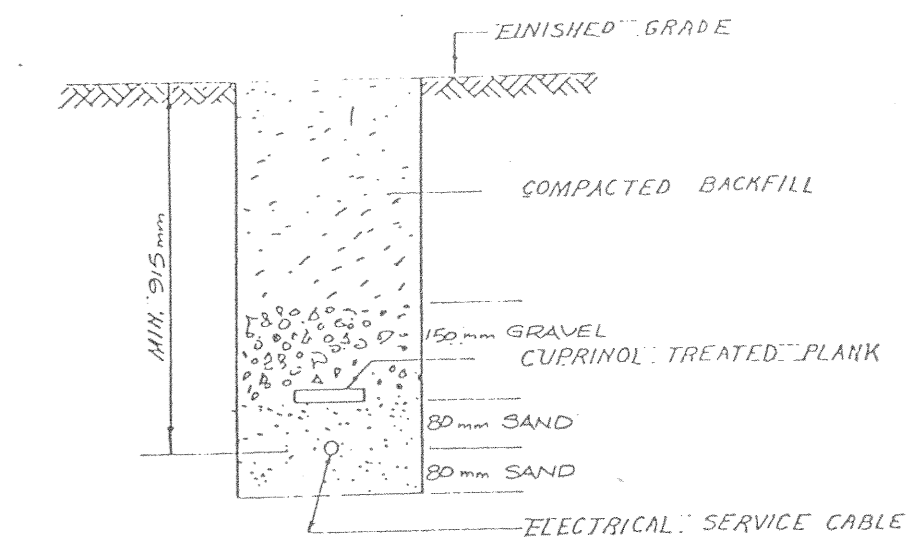
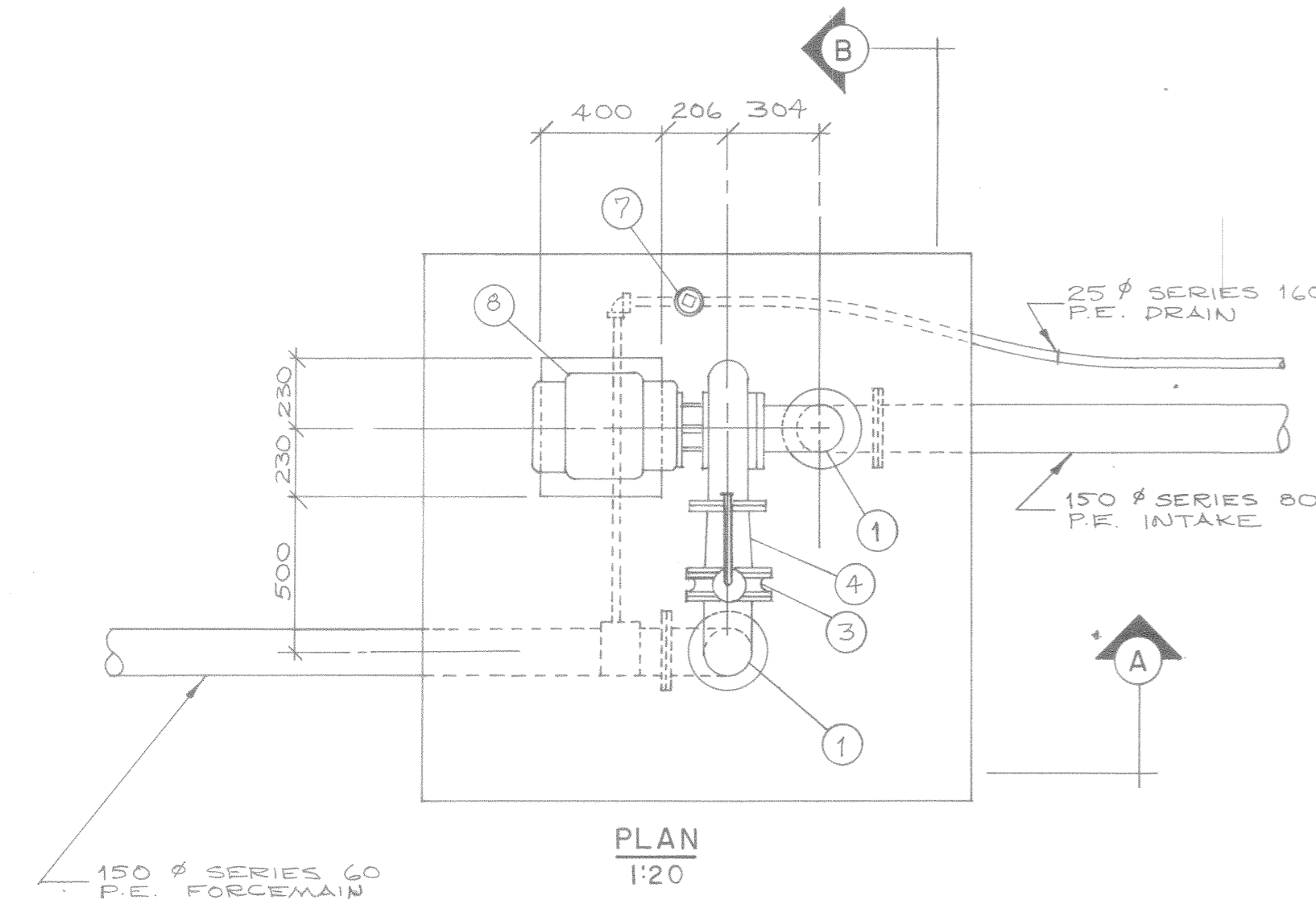


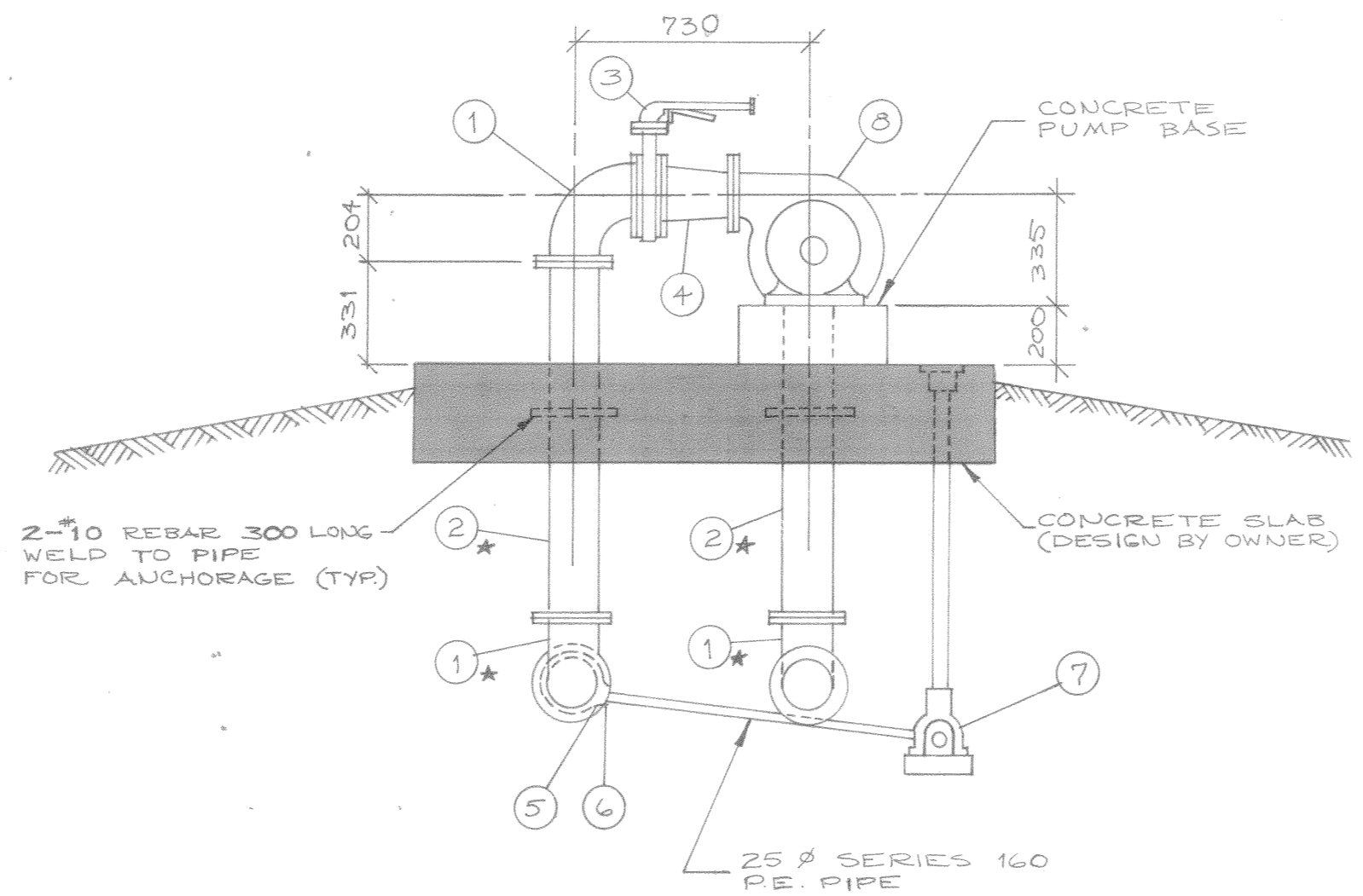
PROFILE
HORZ. = 1:300
VERT. = 1:10



TRENCH DETAIL FOR UNDERGROUND SERVICE			
Drawn By	Approved By	Reference	
K.T.	T.J.E.		
File	Date	Detail Sheet	
B1-152-10		ESD-1	



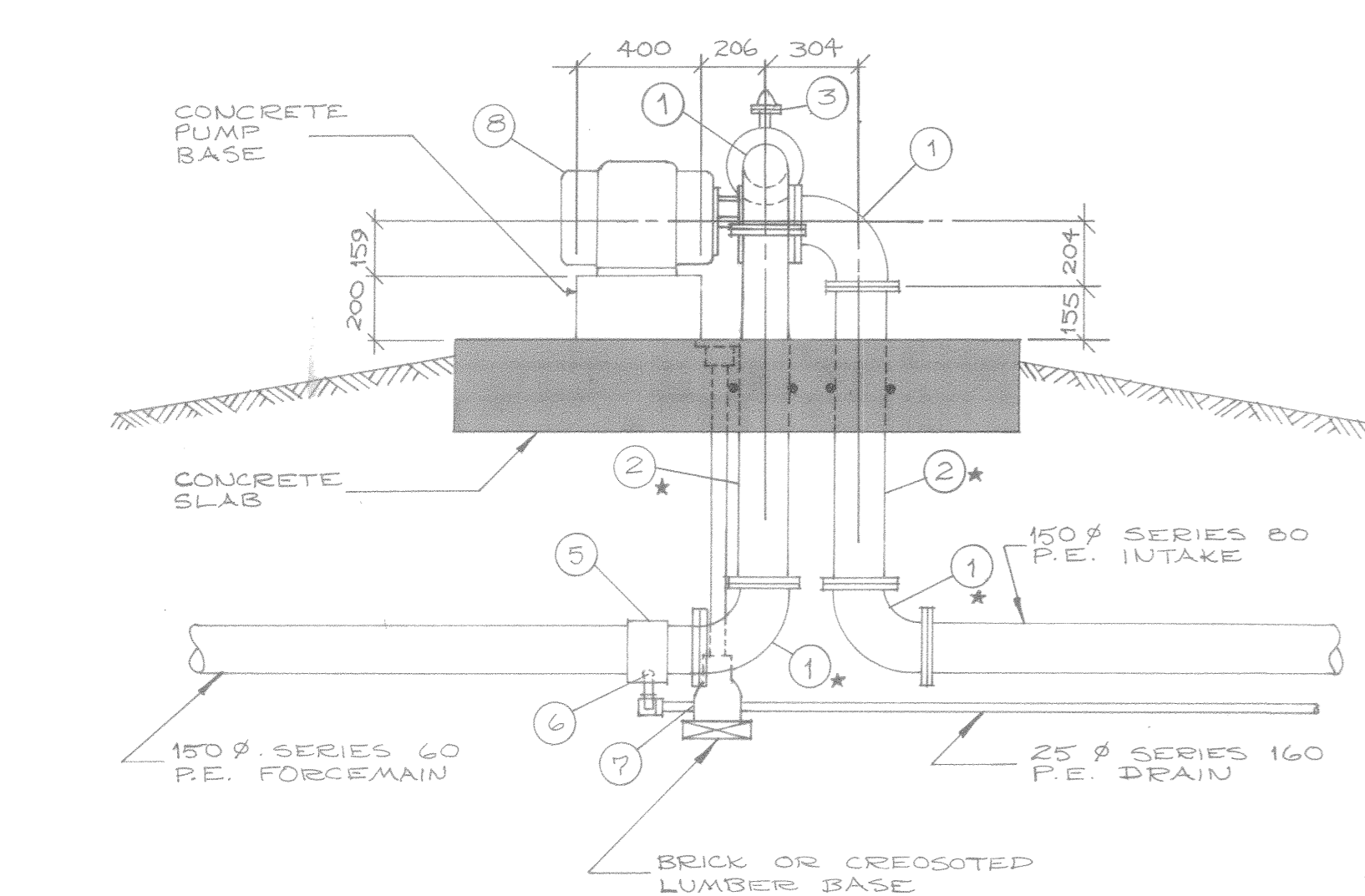
PLAN
1:20



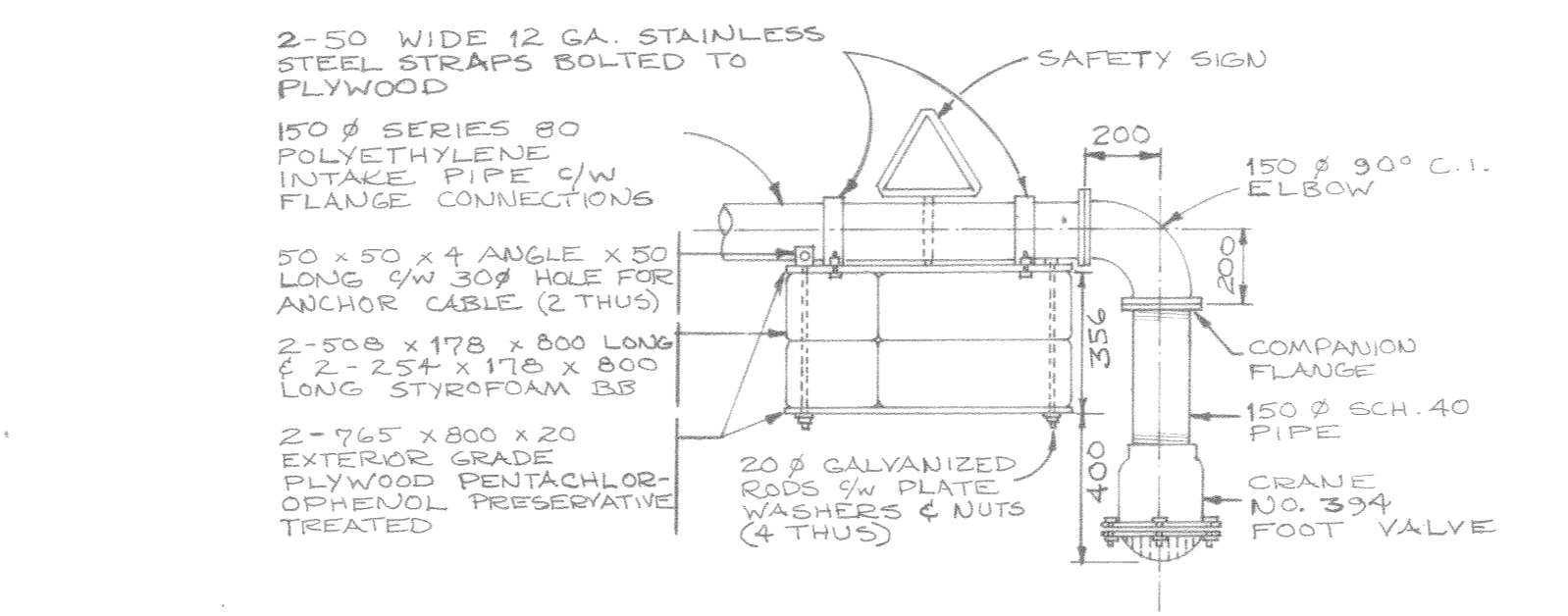
SECTION B
1:20

MARK	QUANTITY	SIZE	DESCRIPTION	MATERIAL
1	4	150	90° Short Radius Elbow, F.E.E.	Cast Iron
2	2	150	Sch. 40 Pipe, F.E.E.	Steel*
3	1	150	Keystone Figure 1000 CPB Butterfly Valve c/w Lever Lock Handle and Throttling Plate	
4	1	150-125	Concentric Reducer	Cast Iron
5	1	25 off 150	Smith Blair Type 352 Saddle	
6	1	25	Ford No. C84-44 Coupling	
7	1	25	Ford No. B44-444 Curb Stop and Box	
8	1		Berkley Model B5EPH, 227 8" Impeller, pump c/w 20 HP, 1800 RPM, 600 V, 3 # motor.	

* c/w 15 mil coal tar epoxy coating

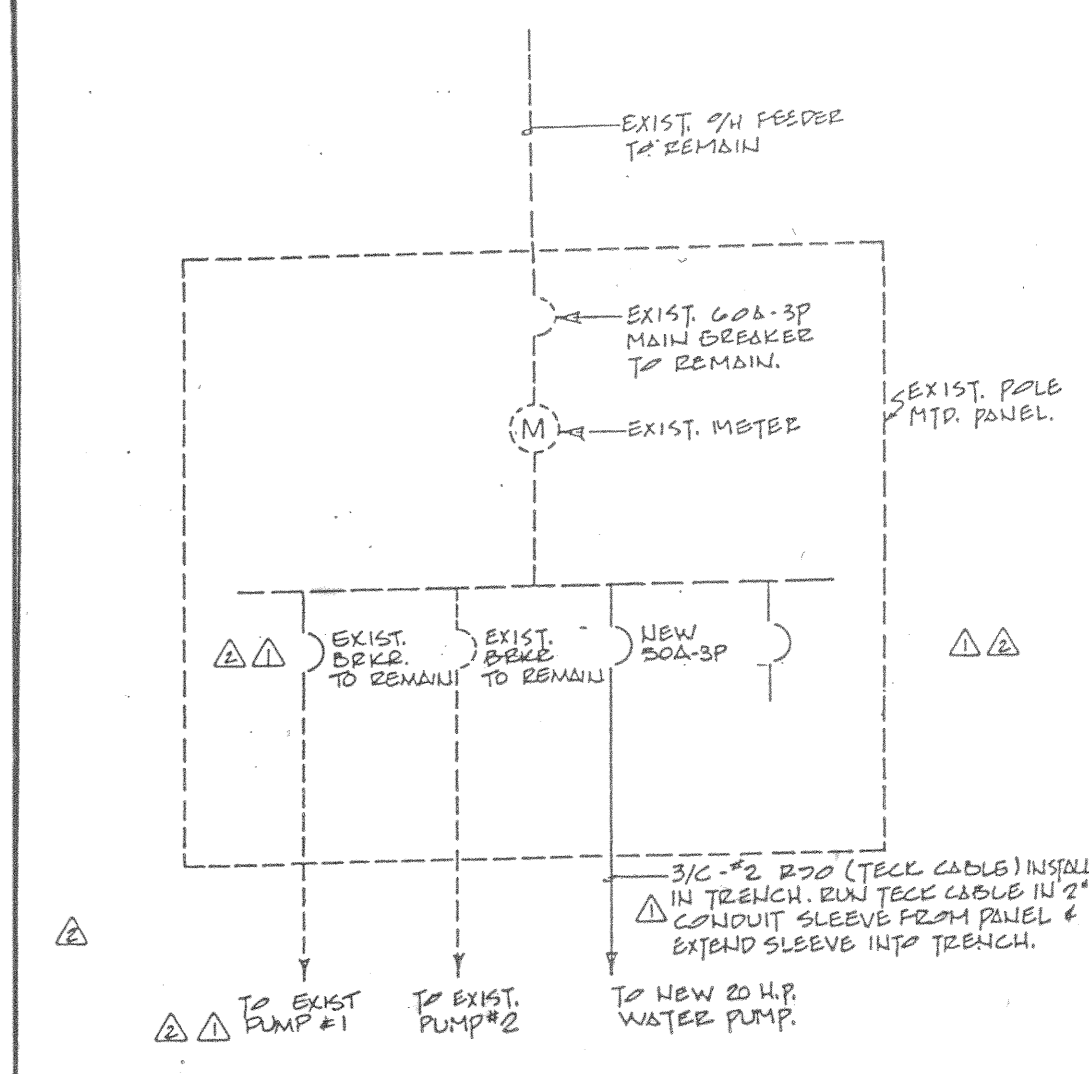


SECTION A
1:20



INTAKE FLOAT DETAIL
1:20

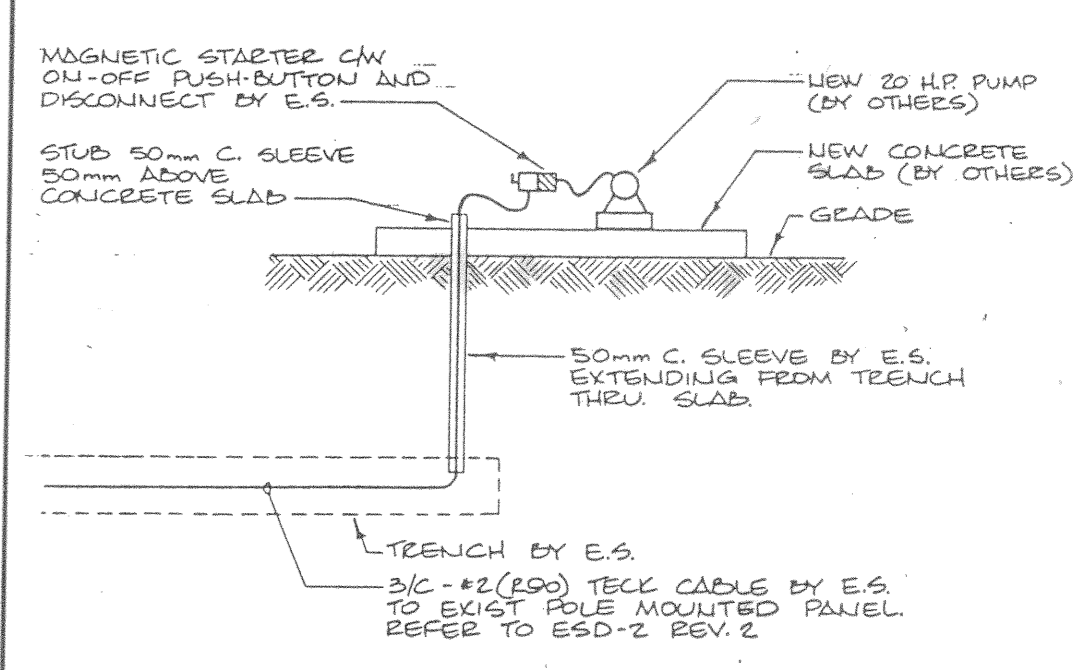
NOTE:
ALL POLYETHYLENE JOINTS AND FITTINGS TO BE FUSION WELDED IN ACCORDANCE WITH THE MANUFACTURERS' RECOMMENDATIONS.



DISTRIBUTION SCHEMATIC - N.T.S.

Drawn By	Approved By	Reference
F.T. & M.P.	T.J.E.	
File	Date	Detail Sheet
B1-152-102	APRIL 02	ESD-2

REV. 2



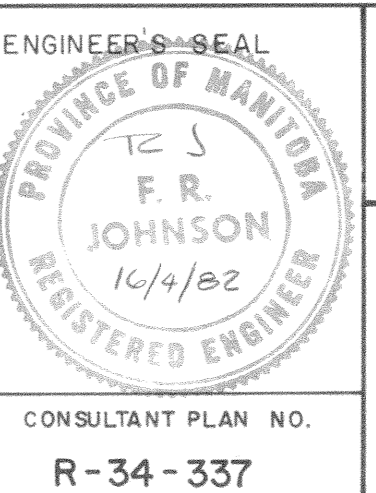
PUMPHOUSE SECTION N.T.S.

Scouten Mitchell Sigurdson Consulting Engineers		KING'S PARK WATERFALL		PUMPHOUSE SECTION	
Drawn By	Approved By	Reference			
E.T. GIVK	T.J.E.				
File	Date	Detail Sheet			
B1-152-102	APR 02	ESD-2			

EXISTING	LEGEND	PROPOSED	EXISTING	LEGEND	PROPOSED

RELEASED FOR CONSTRUCTION			
SUPT. OF PLANNING & DESIGN	<i>James Davis</i>		
MGR. OF PLANNING & RESOURCES	<i>A. W. Schuchman</i>		
DIR. OF PLANNING & DEVELOPMENT	<i>J. R. Thomas</i>		
COMMUNITY/REGIONAL MANAGER	<i>J. R. Thomas</i>		
DIVISION DIRECTOR	<i>J. R. Thomas</i>		
GENERAL MANAGER	<i>J. R. Thomas</i>		
BENCH MARK: E. side King's Dr. At Avila Ave. Tilt in S. Conc. foundation of #136 King's Dr., 3.5m. E. & 0.4m. below stucco of S.W. cor. of house. Elev. = 232.63!			
NO.	REVISIONS	DATE	BY

INTERDISCIPLINARY ENGINEERING COMPANY		MANITOBA	
DESIGNED BY	R. J.	CHECKED BY	D. J. S.
DRAWN BY	P. S.	DATE	APRIL 12, 1982
SCALE:	AS SHOWN	APPROVED BY	<i>D. J. S.</i>
DETAIL:		DATE	16 4 82



THE CITY OF WINNIPEG PARKS AND RECREATION DEPARTMENT	
KING'S PARK WATERFALL AND RELATED WORKS	FIELD BOOK 1851
WATERFALL PUMP SYSTEM	PLAN NO.
CONSULTANT PLAN NO. R-34-337	