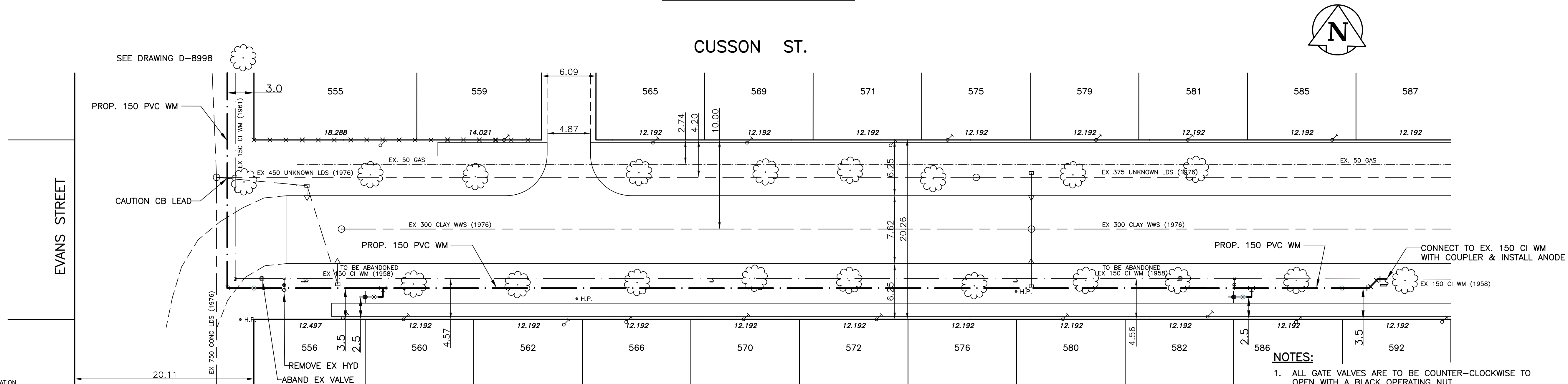


CHAINAGE ALONG SOUTH PROPERTY LINE OF CUSSON ST



WATER SERVICE INFORMATION

ADDRESS & NATURE OF SERVICE (STREET)	SIZE (mm) (PROP.)	SHORT & LONG CORP. MEASUREMENT	REMARKS
555 Cusson St 19 Residential	Copper	0.3 LR CR OF HSE	
556 Cusson St 19 Residential	Copper	1.2 RL CR OF HSE	
559 Cusson St 19 Residential	Copper	2 LR 0.6CR OF HSE	
560 Cusson St 19 Residential	Copper	1.8 LR CR OF HSE	
562 Cusson St 19 Residential	Copper	0.6 RL CR OF HSE	
565 Cusson St 19 Residential	Copper	3.4 LR CR OF HSE	
566 Cusson St 19 Residential	Copper	1.8 L OF R COR	
569 Cusson St 19 Residential	Copper	2.7 R OF L COR	
570 Cusson St 19 Residential	Copper	3.0 L OF R COR	
571 Cusson St 19 Residential	Copper	1.2 LR CR OF HSE	

WATER SERVICE INFORMATION

ADDRESS & NATURE OF SERVICE (STREET)	SIZE (mm) (PROP.)	SHORT & LONG CORP. MEASUREMENT	REMARKS
572 Cusson St 19 Residential	Copper	3.0 RL CR OF HSE	
575 Cusson St 19 Residential	Copper	0.6 RL CR OF HSE	
576 Cusson St 19 Residential	Copper	3.2 RL CR OF HSE	
579 Cusson St 19 Residential	Copper	2.9 L OF R COR	
580 Cusson St 19 Residential	Copper	1.8 LR CR OF HSE	
581 Cusson St 19 Residential	Copper	3.0 R OF L COR	
582 Cusson St 19 Residential	Copper	1.8 R OF L COR	
585 Cusson St 19 Residential	Copper	0.2 W/EHL	RENEWED SERVICE BOX

WATER SERVICE INFORMATION

ADDRESS & NATURE OF SERVICE (STREET)	SIZE (mm) (PROP.)	SHORT & LONG CORP. MEASUREMENT	REMARKS
586 Cusson St 19 Residential	Copper	3.0 LR CR OF HSE	
587 Cusson St 19 Residential	Copper	3.8 R OF L COR	

BENCHMARK:
BM 33-006
ELEV. 231.595

METRIC
WHOLE NUMBERS INDICATE MILLIMETRES
DECIMALIZED NUMBERS INDICATE METRES

- NOTES:
- ALL GATE VALVES ARE TO BE COUNTER-CLOCKWISE TO OPEN WITH A BLACK OPERATING NUT.
 - WATERMAIN TO BE INSTALLED BY TRENCHLESS METHODS. BACKFILL IS CLASS 5 WITHIN BOULEVARD AND CLASS 3 WHEN WITHIN PAVEMENT/SIDEWALK OR WHEN WITHIN 1.0m OF PAVEMENT OR SIDEWALK.
 - WATER SERVICES ARE 19mm COPPER UNLESS OTHERWISE NOTED.
 - MINIMUM COVER TO TOP OF WATERMAIN SHALL BE 2.4m.
 - LOCATION OF ALL SERVICES TO BE CONFIRMED IN FIELD.
 - EXPOSE EXISTING WATERMAIN TO CONFIRM DEPTH PRIOR TO CONSTRUCTION.
 - ALL LEAD SERVICES TO BE RENEWED.
 - SERVICES TO BE RENEWED SHALL BE REPLACED FROM WATERMAIN TO PROPERTY LINE. ALL OTHERS TO BE RECONNECTED.

APECM
Certificate of Authorization
SEG Engineering Inc.
No. 252 Expiry: April 30, 2007

EXISTING	LEGEND - PLAN	PROPOSED	EXISTING	LEGEND - PLAN	PROPOSED	EXISTING	LEGEND - PROFILE	PROPOSED
---	WATERMAIN	---	---	HYDRO	---	---	CENTER LINE	---
---	HYDRANT	---	---	M.T.S.	---	---	NORTH GUTTER LINE	---
---	VALVE	---	---	CONCRETE	---	---	SOUTH GUTTER LINE	---
---	LAND DRAINAGE SEWER	---	---	ASPHALT	---	---	WATERMAIN	---
---	WASTE WATER SEWER	---	---	PROPERTY LINE	---	---	VALVE	---
---	MANHOLE	---	---	SURVEY BAR	---	---	LAND DRAINAGE SEWER	---
---	CATCH BASIN	---	---	CURB STOP	---	---	WASTE WATER SEWER	---
---	CURB INLET	---	---	C.B. LEAD	---	---	JUNCTIONS	---
---	TRAFFIC SIGNAL	---	---	SIDEWALK	---	---	CULVERT	---
---	STEAM HT.	---	---	SIDEWALK RAMP	---	---		
---	GAS	---	---	ELEVATIONS	---	---		
					32.55			

LOCATION APPROVED

SUPV. U/G STRUCTURES COMMITTEE	DATE

NOTE:
LOCATION OF UNDERGROUND STRUCTURES AS SHOWN ARE BASED ON THE BEST INFORMATION AVAILABLE BUT NO GUARANTEE IS GIVEN THAT ALL EXISTING UTILITIES ARE SHOWN OR THAT THE GIVEN LOCATIONS ARE EXACT. CONFIRMATION OF EXISTENCE AND EXACT LOCATION OF ALL SERVICES MUST BE OBTAINED FROM THE INDIVIDUAL UTILITIES BEFORE PROCEEDING WITH CONSTRUCTION.

NO.	REVISIONS	DATE	BY

SEG ENGINEERING INC.
200 TACHE AVENUE
WINNIPEG, MANITOBA
(204)-233-2113

DESIGNED BY: R.H.
DRAWN BY: R.H.
CHECKED BY: S.M.
APPROVED BY: S.M.
RELEASED FOR CONSTRUCTION: K. ZUREK P. ENG
ORIGINALLY SIGNED BY: K. ZUREK P. ENG
DATE: APRIL 18 2006
DATE: MAY 15, 2006

PROFESSIONAL ENGINEER
I. G. MCKINNON

THE CITY OF WINNIPEG
WATER AND WASTE DEPARTMENT

2006 CAPITAL WORKS
WATERMAIN RENEWALS - CONTRACT 18
CUSSON STREET

EVANS STREET
TO 127 M EAST OF EVANS STREET

CITY DRAWING NO.
SHEET 1 OF 2
D-8997