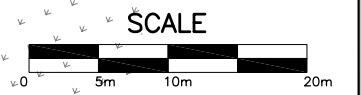
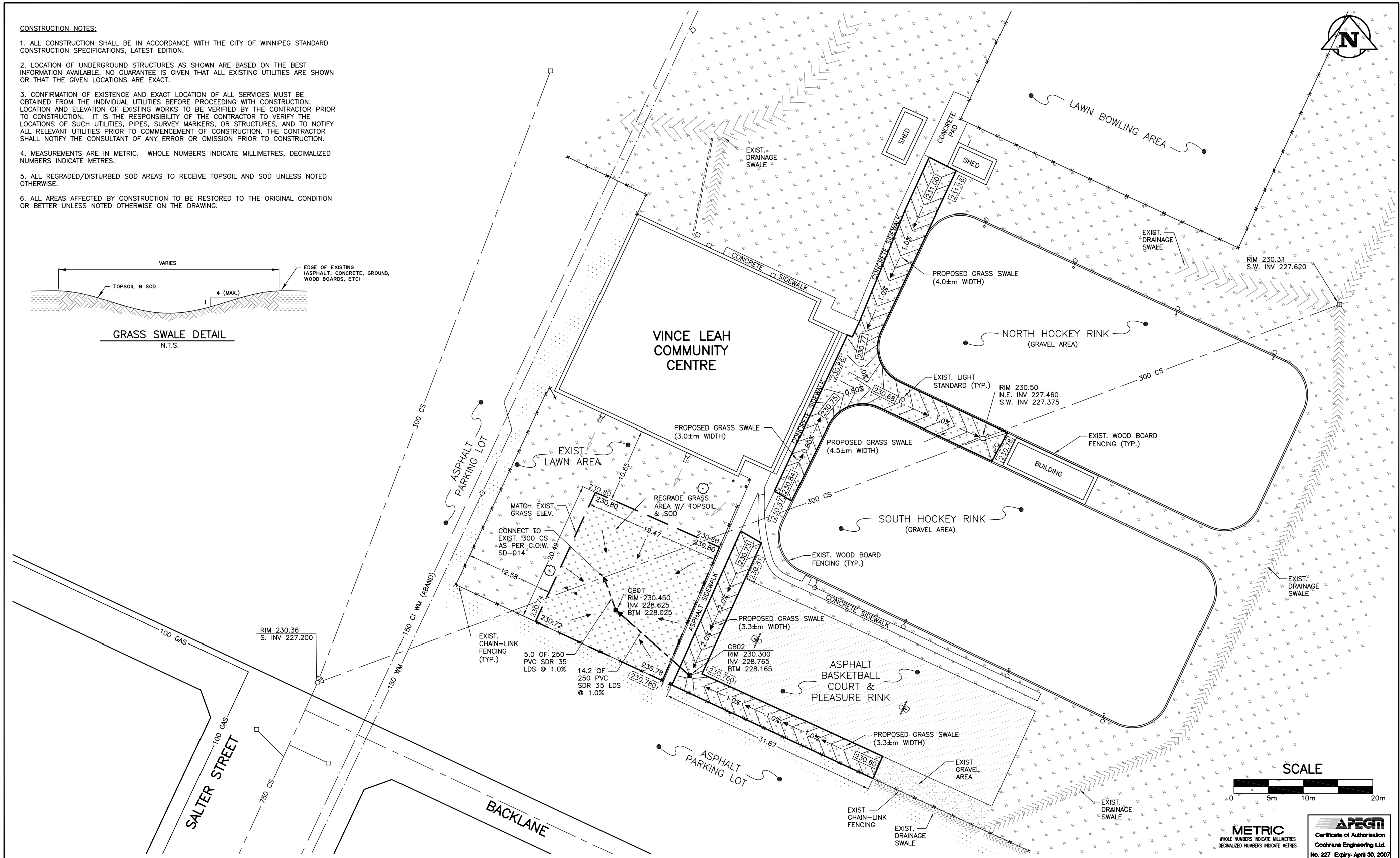
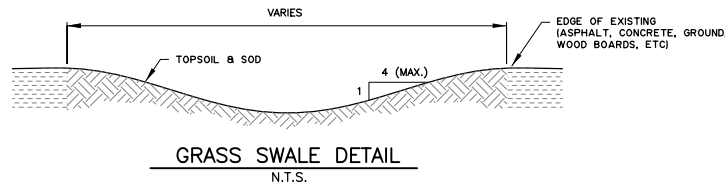


CONSTRUCTION NOTES:

1. ALL CONSTRUCTION SHALL BE IN ACCORDANCE WITH THE CITY OF WINNIPEG STANDARD CONSTRUCTION SPECIFICATIONS, LATEST EDITION.
2. LOCATION OF UNDERGROUND STRUCTURES AS SHOWN ARE BASED ON THE BEST INFORMATION AVAILABLE. NO GUARANTEE IS GIVEN THAT ALL EXISTING UTILITIES ARE SHOWN OR THAT THE GIVEN LOCATIONS ARE EXACT.
3. CONFIRMATION OF EXISTENCE AND EXACT LOCATION OF ALL SERVICES MUST BE OBTAINED FROM THE INDIVIDUAL UTILITIES BEFORE PROCEEDING WITH CONSTRUCTION. LOCATION AND ELEVATION OF EXISTING WORKS TO BE VERIFIED BY THE CONTRACTOR PRIOR TO CONSTRUCTION. IT IS THE RESPONSIBILITY OF THE CONTRACTOR TO VERIFY THE LOCATIONS OF SUCH UTILITIES, PIPES, SURVEY MARKERS, OR STRUCTURES, AND TO NOTIFY ALL RELEVANT UTILITIES PRIOR TO COMMENCEMENT OF CONSTRUCTION. THE CONTRACTOR SHALL NOTIFY THE CONSULTANT OF ANY ERROR OR OMISSION PRIOR TO CONSTRUCTION.
4. MEASUREMENTS ARE IN METRIC. WHOLE NUMBERS INDICATE MILLIMETRES, DECIMALIZED NUMBERS INDICATE METRES.
5. ALL REGRADED/DISTURBED SOD AREAS TO RECEIVE TOPSOIL AND SOD UNLESS NOTED OTHERWISE.
6. ALL AREAS AFFECTED BY CONSTRUCTION TO BE RESTORED TO THE ORIGINAL CONDITION OR BETTER UNLESS NOTED OTHERWISE ON THE DRAWING.



METRIC
WHOLE NUMBERS INDICATE MILLIMETRES
DECIMALIZED NUMBERS INDICATE METRES

APEGM
Certificate of Authorization
Cochrane Engineering Ltd.
No. 227 Expiry April 30, 2007

150 mm WM	WATERMAIN	150 mm WM	HYDRO	150 mm WM	WATERMAIN
⊕	HYDRANT	⊕	MTS	⊕	HYDRANT
⊕	VALVE	⊕	GRASS	⊕	VALVE
300 mm LDS	LAND DRAINAGE SEWER	300 mm LDS	SWALE	300 mm LDS	SEWER
250 mm CS	COMBINED SEWER	250 mm CS	CURB RENEWAL	300 mm LDS	300 mm LDS
○	MANHOLE	○	ASPHALT	○	
□	CATCH BASIN (CB)	□	ELEVATIONS	□	
△	CATCH PIT (CP)	△	PROPERTY LINE	△	
○	SIGN	○	SURVEY BAR	○	
○	LAMP STANDARD	○	CURB STOP	○	
○	GAS	○	RAMP CURB	○	
EXISTING	LEGEND - PLAN	NEW	EXISTING	LEGEND - PLAN	NEW

LOCATION APPROVED
UNDERGROUND STRUCTURES

DATE

NOTE:
LOCATION OF UNDERGROUND STRUCTURES AS SHOWN ARE BASED ON THE BEST INFORMATION AVAILABLE. BUT NO GUARANTEE IS GIVEN THAT ALL EXISTING UTILITIES ARE SHOWN OR THAT THE GIVEN LOCATIONS ARE EXACT. CONFIRMATION OF EXISTENCE AND EXACT LOCATION OF ALL SERVICES MUST BE OBTAINED FROM THE INDIVIDUAL UTILITIES BEFORE PROCEEDING WITH CONSTRUCTION.

B.M. (13-036) 230.444m
S.W. CORNER OF TEMPLETON AVE. & SALTER ST.
TBLT. ON TOP OF 0.05m dia. X 2.4m IRON PIPE,
3.8m E. OF W.L. OF SALTER ST. & ON S.L. OF
TEMPLETON AVE.

COCHRANE ENGINEERING LTD.
#600 - 5 DONALD STREET
WINNIPEG, MANITOBA, R3L 2T4
TEL: (204) 477-8850
FAX: (204) 474-2864
ENGINEERS • PLANNERS • SCIENTISTS • PROJECT MANAGERS
VANCOUVER, CALGARY, EDMONTON, REGINA,
SASKATOON, WINNIPEG, SUDBURY, TORONTO

DESIGNED BY R.C. CHECKED BY D.T.B.
DRAWN BY R.C. APPROVED BY B.D.E.
HOR. SCALE: 1:250
DATE: APRIL 19, 2006

ENGINEER'S SEAL
PROVINCE OF MANITOBA
D.T. Blackburn
Member
23146
REGISTERED PROFESSIONAL ENGINEER

CONSULTANT DRAWING NO.
05142C02

THE CITY OF WINNIPEG
PUBLIC WORKS DEPARTMENT

VINCE LEAH C.C. DRAINAGE
IMPROVEMENT PROJECT

PROPOSED SITE PLAN

CITY DRAWING NUMBER
321-2006-C02
SHEET 2 OF 2

REV.
2 0