

- CONSTRUCTION NOTES**
1. EXPOSE EXISTING WATERMAIN & CONFIRM INVERTS PRIOR TO CONSTRUCTION.
 2. CONFIRM LOCATION OF ALL SERVICES IN THE FIELD.
 3. INSTALL WATERMAIN BY TRENCHLESS METHODS.
 4. TRENCHES AND EXCAVATIONS WITHIN 1 METRE OF A PAVED AREA INCLUDING SIDEWALKS SHALL BE CLASS 3 BACKFILL.
 5. ALL MATERIALS SHALL CONFORM TO THE CITY OF WINNIPEG STANDARD CONSTRUCTION SPECIFICATIONS.
 6. MINIMUM COVER TO TOP OF WATERMAIN SHALL BE 2.4 m.
 7. REPLACE ALL EXISTING LEAD SERVICES FROM PROPOSED WATERMAIN TO E.
 8. NOTIFY ALL AFFECTED RESIDENTS AND BUSINESSES 24 HOURS IN ADVANCE OF ANY WATER SHUTDOWNS OR DISRUPTION OF SERVICE.

NOTE: CHAINAGES SHOWN ARE ALONG W. R. OF SUNNYSIDE BLVD.

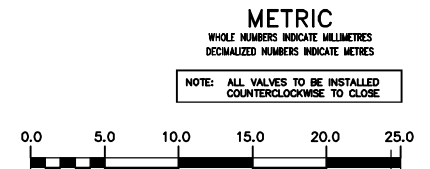
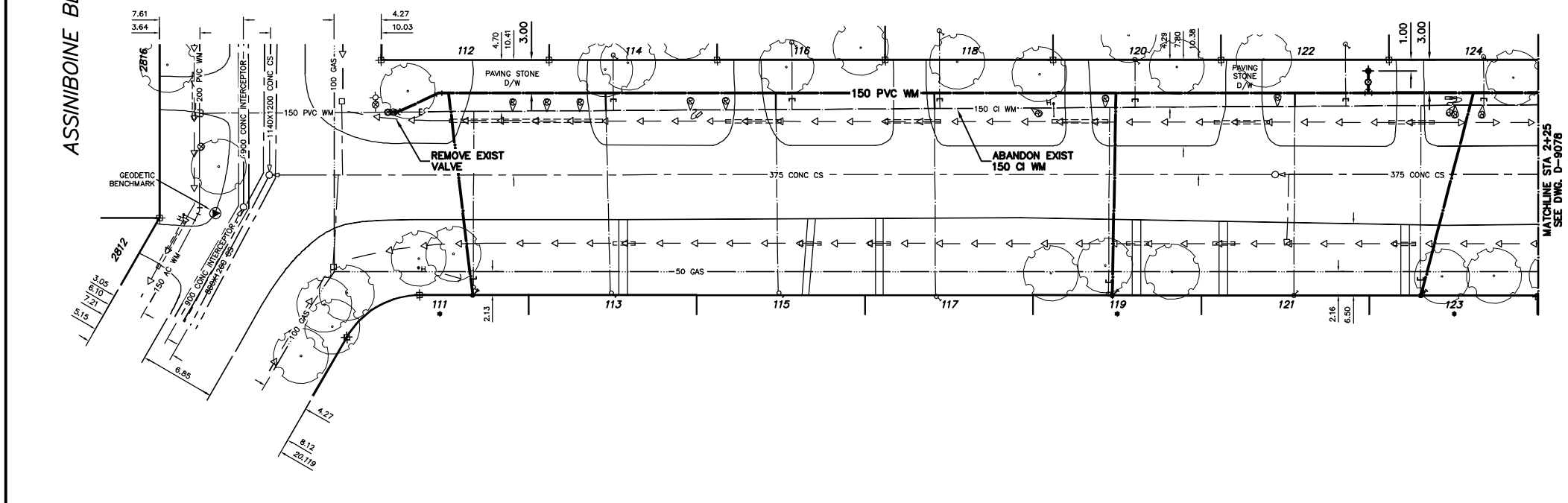
WATER SERVICE INFORMATION

STREET	SIZE	SIZE PROP	SHORT & LONG MEASUREMENT	CORP LOCATION	REMARKS
111 SUNNYSIDE BLVD	13	-	4.02 NSL HSE	OPP S/C	-
RESIDENTIAL	LEAD	-	8.35>NNL ASSINIBOINE	-	-
112 SUNNYSIDE BLVD	20	20	6.04 W OF E/L BLDG	3.96 W OF S/C	SERV. OFF ASSINIBOINE
RESIDENTIAL	COPPER	COPPER	37.80 E OF 1ST HYD W SUNNY	-	-
113 SUNNYSIDE BLVD	-	-	2.8 N S SIDE	-	-
RESIDENTIAL	-	-	20.87>NNL ASSINIBOINE	-	-
114 SUNNYSIDE BLVD	20	20	1.6 N OF S SIDE	-	-
RESIDENTIAL	COPPER	COPPER	21.03>NNL ASSINIBOINE	-	-
115 SUNNYSIDE BLVD	-	-	1.57 N S SIDE	-	-
RESIDENTIAL	-	-	36.0>NNL ASSINIBOINE	-	-
116 SUNNYSIDE BLVD	20	20	1.53 N S SIDE	-	1.62 INTO E
RESIDENTIAL	COPPER	COPPER	37.14>NNL ASSINIBOINE	-	-
117 SUNNYSIDE BLVD	20	19	4.2 N/SHL	-	-
RESIDENTIAL	COPPER	LEAD	50.29>NNL ASSINIBOINE	-	-
118 SUNNYSIDE BLVD	20	20	0.3 NSL HSE	-	2.64 INTO E
RESIDENTIAL	COPPER	COPPER	50.47>NNL ASSINIBOINE	-	-
119 SUNNYSIDE BLVD	13	13	1.29 N S SIDE	-	-
RESIDENTIAL	LEAD	COPPER	65.90>NNL ASSINIBOINE	-	-
120 SUNNYSIDE BLVD	20	20	3.66 N S SIDE	-	-
RESIDENTIAL	COPPER	COPPER	68.34>NNL ASSINIBOINE	-	-
121 SUNNYSIDE BLVD	20	20	5.58 N S SIDE	-	-
RESIDENTIAL	COPPER	COPPER	82.68>NNL ASSINIBOINE	-	-
122 SUNNYSIDE BLVD	20	20	1.0 NSL HSE	-	1.52 INTO E
RESIDENTIAL	COPPER	COPPER	87.48>NNL ASSINIBOINE	-	-
123 SUNNYSIDE BLVD	-	-	2.42 N OF S SIDE	-	-
RESIDENTIAL	-	-	94.18>NNL ASSINIBOINE	-	-
124 SUNNYSIDE BLVD	20	20	3.76 NSL HSE	-	-
RESIDENTIAL	COPPER	COPPER	99.91>NNL ASSINIBOINE	-	-

* SERVICES TO BE RENEWED TO E ALL OTHERS TO BE RECONNECTED

ASSINIBOINE BLVD

SUNNYSIDE BOULEVARD



WARNING

IF POWER EQUIPMENT OR EXPLOSIVES ARE TO BE USED FOR EXCAVATION ON THIS PROJECT THE CONTRACTOR MUST:

- 1) NOTIFY THE GAS COMPANY OF THE PROPOSED LOCATION OF EXCAVATION.
- 2) TAKE PRECAUTION TO AVOID DAMAGE TO GAS COMPANY INSTALLATIONS.

SEE PROVINCIAL REGULATION 210/72 FOR DETAILS

EXISTING	LEGEND-PLAN	PROPOSED	EXISTING	LEGEND-PLAN	PROPOSED	EXISTING	LEGEND-PROFILE	PROPOSED
200 WM	WATERMAIN	200 WM	---	SL, HYDRO	---	150 WM	WATERMAIN	150 WM
⊕	HYDRANT	⊕	---	MTS	---	+	HYDRANT	+
⊙	VALVE	⊙	---	TRAFFIC SIGNALS	---	⊕	VALVE	⊕
525 LDS	LAND DRAINAGE SEWER	525 LDS	---	GAS	---	300 LDS	LAND DRAINAGE SEWER	300 LDS
375 WWS	WASTEWATER SEWER	375 WWS	---	SURVEY BAR	---	250 WWS	WASTEWATER SEWER	250 WWS
○	MANHOLE	○	---	FENCE	---	⊕	PROFILE	⊕
□	CATCH BASIN	□	---	POLE - HYDRO, MTS	---	---	GROUND ABOVE PIPE	---
▽	CURB INLET	▽	---	CURB STOP	---	?	DITCH (NORTH & WEST)	?
△	REDUCER	△	---	GUY ANCHOR	---	?	DITCH (SOUTH & EAST)	?
X	COUPLER	X	---	LIGHT STANDARD	---	---	GUTTER (NORTH & WEST)	---
⊕	ANODE	⊕	---	TREE	---	---	GUTTER (SOUTH & EAST)	---

LOCATION APPROVED	B.M. ELEV.	FIELD BOOK #:
UNDERGROUND STRUCTURES		
SUPV. U/G STRUCTURES COMMITTEE		
DATE:		
NOTE:		
LOCATION OF UNDERGROUND STRUCTURES AS SHOWN ARE BASED ON THE BEST INFORMATION AVAILABLE BUT NO GUARANTEE IS GIVEN THAT ALL EXISTING UTILITIES ARE SHOWN OR THAT THE GIVEN LOCATIONS ARE EXACT. CONFIRMATION OF EXISTENCE AND EXACT LOCATION OF ALL SERVICES MUST BE OBTAINED FROM THE INDIVIDUAL UTILITIES BEFORE PROCEEDING WITH CONSTRUCTION.		
NO. REVISIONS	DATE	BY

CITY OF WINNIPEG
WATER AND WASTE
ENGINEERING DIVISION

DESIGNED BY: NC/SC CHECKED BY: TW
 DRAWN BY: CJH APPROVED BY: KZ

HOR. SCALE: 1:250
 VERTICAL: 1:50

RELEASED FOR CONSTRUCTION

DATE: 2006 08 04

ENGINEER'S SEAL

ORIGINAL SIGNED BY S.R.J. COUNROYER 06/08/04

BID OPPORTUNITY: 303-2006
 FILENAME: D-9077.dwg
 PLOT DATE: 2006 08 04

THE CITY OF WINNIPEG
WATER AND WASTE DEPARTMENT

2006 WATERMAIN RENEWALS

SUNNYSIDE BOULEVARD
 ASSINIBOINE AVENUE TO
 105 N OF N R ASSINIBOINE AVENUE

SHEET 9 OF 10
 CITY DRAWING NUMBER
 D-9077