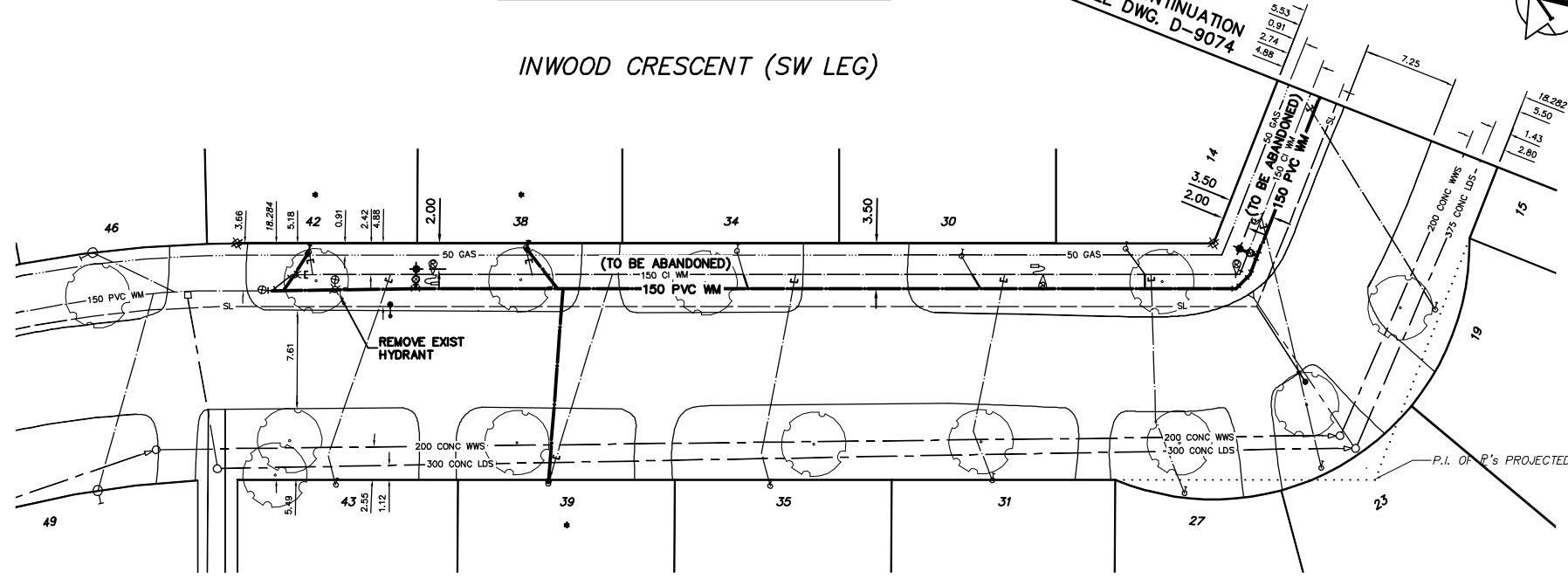


NOTE: CHAINAGES SHOWN ARE ALONG SW R_L OF INWOOD CRES. (SW LEG)

INWOOD CRESCENT (SW LEG)

FOR CONTINUATION SEE DWG. D-9074



WATER SERVICE INFORMATION

ADDRESS	SIZE(mm) & TYPE (STREET)	SIZE(mm) & TYPE (PROP)	SHORT & LONG MEASUREMENT	CORP. LOCATION	REMARKS
14 INWOOD CRES RESIDENTIAL	20 COPPER	20 COPPER	2.44 E.OF W/SIDE BLDG	SEE REMARKS	CORP.236'S THEN W.OF VALVE ON INWOOD E/LEG AT CAVALIER BK.4.PG.45 SEWER JCT MEAS 33'W.OF MH INWOOD SE COR
15 INWOOD CRES RESIDENTIAL	20 COPPER	20 COPPER	5.85 W.OF E/SIDE BLDG	SEE REMARKS	CORP.180'S OF VALVE ON INWOOD CRES E/LEG AT CAVALIER DR BK.6.PG.6 SEWER JCT MEAS 77'S.1ST MHS CRESTVIEW
19 INWOOD CRES RESIDENTIAL	20 COPPER	20 COPPER	1.37 W.OF E/SIDE BLDG	SEE REMARKS	CORP.184'S OF VALVE ON INWOOD CRES E/LEG AT CAVALIER BK.4.PG.44 SEWER JCT MEAS 129'S.MHS CRESTVIEW DR
23 INWOOD CRES RESIDENTIAL	20 COPPER	20 COPPER	8.23 W OF E SIDE BLDG	-	CORP.189 S OF VALVE ON INWOOD CRES E LEGAT CAVALIER DR SEWER JCT MEAS 159 S 1ST MHS CRESTVIEW
27 INWOOD CRES RESIDENTIAL	20 COPPER	20 COPPER	4.72 W.OF E/SIDE BLDG	SEE REMARKS	CORP.232'S THEN W.OF VALVE ON INWOOD E/LEG BK.4.PG.43 ST.-03217480-07. SEWER JCT MEAS 30'W.MH INWOOD SE CORNER
30 INWOOD CRES RESIDENTIAL	20 COPPER	20 COPPER	5.43 W.OF E/SIDE BLDG	-	BK.8.PG.60
31 INWOOD CRES RESIDENTIAL	20 COPPER	20 COPPER	6.55 W.OF E/SIDE BLDG	SEE REMARKS	CORP.279'S THEN W.OF VALVE ON INWOOD CRES E/LEG AT CAVALIER BK.4.PG.43 SEWER JCT MEAS 90'W.MH INWOOD SE CORNER
34 INWOOD CRES RESIDENTIAL	20 COPPER	20 COPPER	7.38 E.OF W/SIDE BLDG	SEE REMARKS	CORP.336'S THEN W.OF VALVE ON INWOOD CRES E/LEG AT CAVALIER BK.8.PG.60 SEWER JCT MEAS 150'W.MH INWOOD S/E CORN
35 INWOOD CRES RESIDENTIAL	20 COPPER	20 COPPER	7.32 W.OF E/SIDE BLDG	-	CORP.333'S THEN W.OF VALVE ON INWOOD CRES E/LEG AT CAVALIER BK.8.PG.3 SEWER JCT MEAS 147'W.MH INWOOD S/E COR
38 INWOOD CRES RESIDENTIAL	20 COPPER	20 COPPER	7.25 E.OF W/SIDE BLDG	SEE REMARKS	CORP.392'S THEN W.OF VALVE ON INWOOD CRES E/LEG AT CAVALIER BK.8.PG.14 SEWER JCT MEAS 210'W.MH INWOOD S/E COR
39 INWOOD CRES RESIDENTIAL	20 COPPER	20 COPPER	6.71 W.OF E/SIDE BLDG	SEE REMARKS	CORP.388'S THEN W.OF VALVE ON INWOOD CRES E/LEG AT CAVALIER BK.8.PG.4 SEWER JCT MEAS 207'W.MH INWOOD S/E COR
42 INWOOD CRES RESIDENTIAL	20 COPPER	20 COPPER	4.82 E.OF W/SIDE BLDG	SEE REMARKS	CORP.444'S THEN W.OF VALVE ON INWOOD CRES E/LEG AT CAVALIER BK.8.PG.15 SEWER JCT MEAS 285'W.MH INWOOD S/E COR
43 INWOOD CRES RESIDENTIAL	20 COPPER	20 COPPER	6.31 W.OF E/SIDE BLDG	SEE REMARKS	CORP.440'S THEN W.OF VALVE ON INWOOD CRES E/LEG AT CAVALIER BK.8.PG.5 SEWER JCT MEAS 282'W.MH INWOOD S/E COR

* SERVICES TO BE RENEWED TO R_L ALL OTHERS TO BE RECONNECTED

CONSTRUCTION NOTES

1. EXPOSE EXISTING WATERMAIN & CONFIRM INVERTS PRIOR TO CONSTRUCTION.
2. CONFIRM LOCATION OF ALL SERVICES IN THE FIELD.
3. INSTALL WATERMAIN BY TRENCHLESS METHODS.
4. TRENCHES AND EXCAVATIONS WITHIN 1 METRE OF A PAVED AREA INCLUDING SIDEWALKS SHALL BE CLASS 3 BACKFILL.
5. ALL MATERIALS SHALL CONFORM TO THE CITY OF WINNIPEG STANDARD CONSTRUCTION SPECIFICATIONS.
6. MINIMUM COVER TO TOP OF WATERMAIN SHALL BE 2.4 m.
7. REPLACE ALL EXISTING LEAD SERVICES FROM PROPOSED WATERMAIN TO R_L.
8. NOTIFY ALL AFFECTED RESIDENTS AND BUSINESSES 24 HOURS IN ADVANCE OF ANY WATER SHUTDOWNS OR DISRUPTION OF SERVICE.

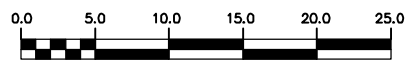
METRIC

WHOLE NUMBERS INDICATE MILLIMETRES
DECIMAL NUMBERS INDICATE METRES

NOTE: ALL VALVES TO BE INSTALLED COUNTERCLOCKWISE TO CLOSE

WARNING

MUST:
IF POWER EQUIPMENT OR EXPLOSIVES ARE TO BE USED FOR EXCAVATION ON THIS PROJECT THE CONTRACTOR
1) NOTIFY THE GAS COMPANY OF THE PROPOSED LOCATION OF EXCAVATION.
2) TAKE PRECAUTION TO AVOID DAMAGE TO GAS COMPANY INSTALLATIONS.
SEE PROVINCIAL REGULATION 210/72 FOR DETAILS



200 WM	WATERMAIN	200 WM	SL, HYDRO	150 WM	WATERMAIN	150 WM
⊕	HYDRANT	⊕	MTS	⊕	HYDRANT	⊕
⊙	VALVE	⊙	TRAFFIC SIGNALS	⊙	VALVE	⊙
525 LDS	LAND DRAINAGE SEWER	525 LDS	GAS	50 GAS	300 LDS	LAND DRAINAGE SEWER
375 WWS	WASTEWATER SEWER	375 WWS	SURVEY BAR	250 WWS	WASTEWATER SEWER	250 WWS
○	MANHOLE	○	FENCE	⊖	PROFILE	⊖
□	CATCH BASIN	□	POLE - HYDRO, MTS	⊖	GROUND ABOVE PIPE	⊖
▽	CURB INLET	▽	CURB STOP	⊖	? DITCH (NORTH & WEST)	⊖
∇	REDUCER	∇	GUY ANCHOR	⊖	? DITCH (SOUTH & EAST)	⊖
X	COUPLER	X	LIGHT STANDARD	⊖	GUTTER (NORTH & WEST)	⊖
⊖	ANODE	⊖	TREE	⊖	GUTTER (SOUTH & EAST)	⊖
EXISTING	LEGEND-PLAN	PROPOSED	EXISTING	LEGEND-PLAN	PROPOSED	EXISTING
EXISTING	LEGEND-PROFILE	PROPOSED	EXISTING	LEGEND-PROFILE	PROPOSED	EXISTING

LOCATION APPROVED UNDERGROUND STRUCTURES	SUPV. U/G STRUCTURES COMMITTEE	DATE
NOTE: LOCATION OF UNDERGROUND STRUCTURES AS SHOWN ARE BASED ON THE BEST INFORMATION AVAILABLE BUT NO GUARANTEE IS GIVEN THAT THE GIVEN LOCATIONS ARE EXACT. CONFIRMATION OF EXISTENCE AND EXACT LOCATION OF ALL SERVICES MUST BE OBTAINED FROM THE INDIVIDUAL UTILITIES BEFORE PROCEEDING WITH CONSTRUCTION.		

CITY OF WINNIPEG
WATER AND WASTE
ENGINEERING DIVISION

DESIGNED BY: NC/SC
CHECKED BY: TW

DRAWN BY: CJH
APPROVED BY: KZ

HOR. SCALE: 1:250
VERTICAL: 1:50

RELEASED FOR CONSTRUCTION

DATE: 2006 08 04

ENGINEER'S SEAL

ORIGINAL SIGNED BY S.R.J. COURNOYER 06/08/04

THE CITY OF WINNIPEG
WATER AND WASTE DEPARTMENT

2006 WATERMAIN RENEWALS

INWOOD CRESCENT
SE LEG INWOOD CRESCENT TO
173 W OF SE LEG INWOOD CRESCENT

SHEET 5 OF 10
CITY DRAWING NUMBER
D-9073

TENDER No. 303-2006
FILENAME: D-9073.dwg
PLOT DATE: 2006 08 04