

NOTE: CHAINAGES SHOWN ARE ALONG S R OF DOWKER AVE

WATER SERVICE INFORMATION

ADDRESS	SIZE(mm) & TYPE (STREET)	SIZE(mm) & TYPE (PROP)	SHORT & LONG MEASUREMENT	CORP. LOCATION	REMARKS
903 DOWKER AVE RESIDENTIAL	20 COPPER	-	4.50 EWL HSE 9.53 EEL CROWSON (E LG)	0.91 W OF S/C	MAR/03-COUPLING 3' N OF CORP
901 DOWKER AVE RESIDENTIAL	20 COPPER	20	0.25 WEL HSE 33.07 EEL CROWSON (E LG)	0.46 W E H/L	-
899 DOWKER AVE RESIDENTIAL	20 COPPER	20	3.60 WEL HSE 41.87 EEL CROWSON (E LG)	OPP S/C	-
81 RILEY ST RESIDENTIAL	-	-	1.52 SNL HSE 11.34 NNL DOWKER	-	SERVICED FROM RILEY CRES
82 RILEY ST RESIDENTIAL	-	-	7.01 NSL HSE	-	SERVICED FROM RILEY CRES
101 RILEY CR RESIDENTIAL	-	-	4.11 SNL HSE	4.27 S N H/L	SERVICED FROM RILEY CRES
102 RILEY CR RESIDENTIAL	-	-	7.99 SSL DOWKER 0.30 S N H/L 2.84 SSL DOWKER	0.70 S N H/L	SERVICED FROM RILEY CRES

* SERVICES TO BE RENEWED TO R ALL OTHERS TO BE RECONNECTED

CONSTRUCTION NOTES

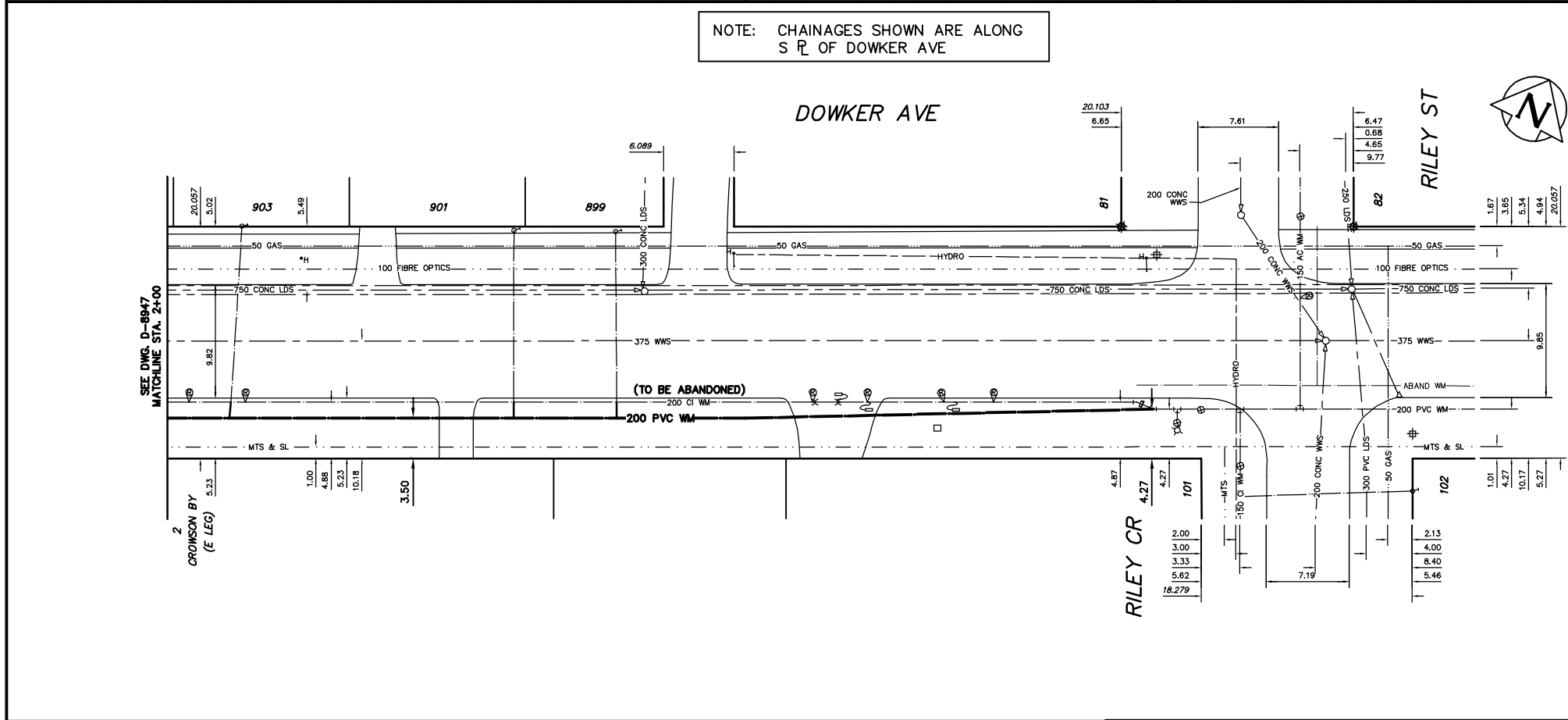
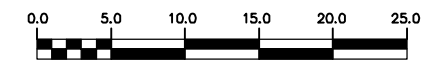
1. EXPOSE EXISTING WATERMAIN & CONFIRM INVERTS PRIOR TO CONSTRUCTION.
2. CONFIRM LOCATION IN THE FIELD OF ALL SERVICES.
3. INSTALL WATERMAIN BY TRENCHLESS METHODS.
4. TRENCHES AND EXCAVATIONS WITHIN 1 METRE OF A PAVED AREA INCLUDING SIDEWALKS SHALL BE CLASS 3 BACKFILL.
5. ALL MATERIALS SHALL CONFORM TO THE CITY OF WINNIPEG STANDARD CONSTRUCTION SPECIFICATIONS.
6. MINIMUM COVER TO TOP OF WATERMAIN SHALL BE 2.4 m.
7. REPLACE ALL EXISTING LEAD SERVICES FROM PROPOSED WATERMAIN TO R.
8. NOTIFY ALL AFFECTED RESIDENTS AND BUSINESSES 24 HOURS IN ADVANCE OF ANY WATER SHUTDOWNS OR DISRUPTION OF SERVICE.

METRIC
WHOLE NUMBERS INDICATE MILLIMETRES
DECIMALIZED NUMBERS INDICATE METRES

NOTE: ALL VALVES TO BE INSTALLED CLOCKWISE TO CLOSE WITH BLACK OPERATING NUT

WARNING

IF POWER EQUIPMENT OR EXPLOSIVES ARE TO BE USED FOR EXCAVATION ON THIS PROJECT THE CONTRACTOR MUST:
1) NOTIFY THE GAS COMPANY OF THE PROPOSED LOCATION OF EXCAVATION.
2) TAKE PRECAUTION TO AVOID DAMAGE TO GAS COMPANY INSTALLATIONS.
SEE PROVINCIAL REGULATION 210/72 FOR DETAILS



200 WM	WATERMAIN	200 WM	SL, HYDRO	150 WM	WATERMAIN	150 WM
⊕	HYDRANT	⊕	MTS	⊕	HYDRANT	⊕
⊙	VALVE	⊙	TRAFFIC SIGNALS	⊙	VALVE	⊙
525 LDS	LAND DRAINAGE SEWER	525 LDS	50 GAS	300 LDS	LAND DRAINAGE SEWER	300 LDS
375 WWS	WASTEWATER SEWER	375 WWS	50 GAS	250 WWS	WASTEWATER SEWER	250 WWS
○	MANHOLE	○	FENCE	⊕	PROFILE	⊕
□	CATCH BASIN	□	POLE - HYDRO, MTS	⊕	GROUND ABOVE PIPE	⊕
▽	CURB INLET	▽	CURB STOP	⊕	? DITCH (NORTH & WEST)	⊕
◁	REDUCER	◁	GUY ANCHOR	⊕	? DITCH (SOUTH & EAST)	⊕
×	COUPLER	×	LIGHT STANDARD	⊕	GUTTER (NORTH & WEST)	⊕
⊕	ANODE	⊕	TREE	⊕	GUTTER (SOUTH & EAST)	⊕
EXISTING	LEGEND-PLAN	PROPOSED	EXISTING	LEGEND-PLAN	PROPOSED	EXISTING

LOCATION APPROVED UNDERGROUND STRUCTURES
SUPV. U/G STRUCTURES COMMITTEE DATE: _____
NOTE: LOCATION OF UNDERGROUND STRUCTURES AS SHOWN ARE BASED ON THE BEST INFORMATION AVAILABLE BUT NO GUARANTEE IS GIVEN THAT ALL EXISTING UTILITIES ARE SHOWN OR THAT THE GIVEN LOCATIONS ARE EXACT. CONFIRMATION OF EXISTENCE AND EXACT LOCATION OF ALL SERVICES MUST BE OBTAINED FROM THE INDIVIDUAL UTILITIES BEFORE PROCEEDING WITH CONSTRUCTION.

B.M. ELEV.	FIELD BOOK #:
POSTED TO LBS	
NO. REVISIONS	DATE BY

CITY OF WINNIPEG
WATER AND WASTE
ENGINEERING DIVISION

DESIGNED BY: SC
CHECKED BY: TW
DRAWN BY: CJH
APPROVED BY: KZ
HOR. SCALE: 1:250
VERTICAL: 1:50
RELEASED FOR CONSTRUCTION: _____
DATE: 2006 08 04

ENGINEER'S SEAL
ORIGINAL SIGNED BY S.R.J. CROUNOYER 06/08/04

THE CITY OF WINNIPEG
WATER AND WASTE DEPARTMENT

2006 WATERMAIN RENEWALS
DOWKER AVENUE
CROWSON BAY (E LEG) TO
RILEY CRESCENT

SHEET 4 OF 10
CITY DRAWING NUMBER
D-8948

BID OPPORTUNITY: 303-2006
FILENAME: D-8948.dwg
PLOT DATE: 2006 08 04