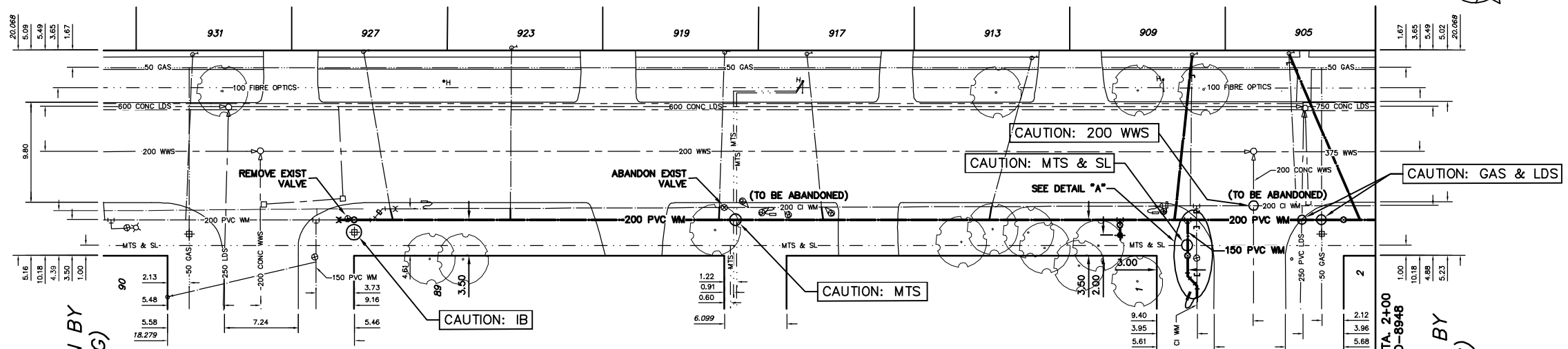


NOTE: CHAINAGES SHOWN ARE ALONG S R OF DOWKER AVE

DOWKER AVE



WATER SERVICE INFORMATION

ADDRESS	SIZE(mm) & TYPE (STREET)	SIZE(mm) & TYPE (PROP)	SHORT & LONG MEASUREMENT	CORP. LOCATION	REMARKS
89 CROWSON BY RESIDENTIAL	20 COPPER	20	0.25>NNL HSE	0.91 N S/C	SERVICED FROM CROWSON BAY
90 CROWSON BY RESIDENTIAL	20 COPPER	20	6.54 SSL DOWKER	3.05 N S/C	SERVICED FROM CROWSON BAY
931 DOWKER AVE RESIDENTIAL	20 COPPER	20	4.04 SSL DOWKER	0.61 W S/C	-
927 DOWKER AVE RESIDENTIAL	20 COPPER	20	3.94 EWL HSE	0.61 W S/C	UNION 1.40M FROM C.C.
923 DOWKER AVE RESIDENTIAL	20 COPPER	20	2.45 EWL CROWSON (W LG)	0.30 W OF S/C	GR STRAP IS 2' W OF S/C
919 DOWKER AVE RESIDENTIAL	20 COPPER	20	3.65 EWL HSE	0.15 W OF S/C	-
917 DOWKER AVE RESIDENTIAL	20 COPPER	20	0.91 EEL CROWSON (W LG)	-	-
913 DOWKER AVE RESIDENTIAL	20 COPPER	20	5.0 EWL HSE	-	-
909 DOWKER AVE RESIDENTIAL	20 COPPER	20	15.41 EEL CROWSON (W LG)	-	-
905 DOWKER AVE RESIDENTIAL	20 COPPER	20	2.75 WEL HSE	-	-
			36.30 EEL CROWSON (W LG)	-	-

\*SERVICES TO BE RENEWED TO € ALL OTHERS TO BE RECONNECTED

WATER SERVICE INFORMATION

ADDRESS	SIZE(mm) & TYPE (STREET)	SIZE(mm) & TYPE (PROP)	SHORT & LONG MEASUREMENT	CORP. LOCATION	REMARKS
917 DOWKER AVE RESIDENTIAL	20 COPPER	20	3.17 EWL HSE	5.61 E W H/L	S/C BOX RENEWED.
913 DOWKER AVE RESIDENTIAL	20 COPPER	20	44.28 EEL CROWSON (W LG)	5.61 E W H/L	-
909 DOWKER AVE RESIDENTIAL	20 COPPER	20	1.20 WEL HSE	0.30 E E H/L	-
905 DOWKER AVE RESIDENTIAL	20 COPPER	20	12.23 WEL CROWSON (E LG)	4.27 E W H/L	-
			2.64 WEL HSE	-	-
			3.44 EWL CROWSON (E LG)	-	-
			4.60 EWL HSE	-	-
			5.37 WEL CROWSON (E LG)	-	-
			1.95 NSL HSE	3.72 SNL HSE	SERVICED FROM CROWSON BAY
			1.98 NSL HSE	1.55 NSL HSE	SERVICED FROM CROWSON BAY

\*SERVICES TO BE RENEWED TO € ALL OTHERS TO BE RECONNECTED

CONSTRUCTION NOTES

1. EXPOSE EXISTING WATERMAIN & CONFIRM INVERTS PRIOR TO CONSTRUCTION.
2. CONFIRM LOCATION IN THE FIELD OF ALL SERVICES.
3. INSTALL WATERMAIN BY TRENCHLESS METHODS.
4. TRENCHES AND EXCAVATIONS WITHIN 1 METRE OF A PAVED AREA INCLUDING SIDEWALKS SHALL BE CLASS 3 BACKFILL.
5. ALL MATERIALS SHALL CONFORM TO THE CITY OF WINNIPEG STANDARD CONSTRUCTION SPECIFICATIONS.
6. MINIMUM COVER TO TOP OF WATERMAIN SHALL BE 2.4 m.
7. REPLACE ALL EXISTING LEAD SERVICES FROM PROPOSED WATERMAIN TO R.
8. NOTIFY ALL AFFECTED RESIDENTS AND BUSINESSES 24 HOURS IN ADVANCE OF ANY WATER SHUTDOWNS OR DISRUPTION OF SERVICE.

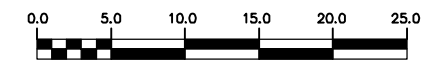
METRIC

WHOLE NUMBERS INDICATE MILLIMETRES  
DECIMALIZED NUMBERS INDICATE METRES

NOTE: ALL VALVES TO BE INSTALLED CLOCKWISE TO CLOSE WITH BLACK OPERATING NUT

WARNING

IF POWER EQUIPMENT OR EXPLOSIVES ARE TO BE USED FOR EXCAVATION ON THIS PROJECT THE CONTRACTOR MUST:  
1) NOTIFY THE GAS COMPANY OF THE PROPOSED LOCATION OF EXCAVATION.  
2) TAKE PRECAUTION TO AVOID DAMAGE TO GAS COMPANY INSTALLATIONS.  
SEE PROVINCIAL REGULATION 210/72 FOR DETAILS



200 WM	WATERMAIN	200 WM	SL, HYDRO	150 WM	WATERMAIN	150 WM
⊕	HYDRANT	⊕	MTS	⊕	HYDRANT	⊕
⊙	VALVE	⊙	TRAFFIC SIGNALS	⊙	VALVE	⊙
525 LDS	LAND DRAINAGE SEWER	525 LDS	GAS	50 GAS	LAND DRAINAGE SEWER	300 LDS
375 WWS	WASTEWATER SEWER	375 WWS	SURVEY BAR	250 WWS	WASTEWATER SEWER	250 WWS
○	MANHOLE	○	FENCE	×	PROFILE	
□	CATCH BASIN	□	POLE - HYDRO, MTS	⊘	GROUND ABOVE PIPE	
▽	CURB INLET	▽	CURB STOP	▲	? DITCH (NORTH & WEST)	
◁	REDUCER	◁	GUY ANCHOR	▽	? DITCH (SOUTH & EAST)	
X	COUPLER	X	LIGHT STANDARD	□	GUTTER (NORTH & WEST)	
⊖	ANODE	⊖	TREE	○	GUTTER (SOUTH & EAST)	
EXISTING	LEGEND-PLAN	PROPOSED	EXISTING	LEGEND-PLAN	PROPOSED	EXISTING

LOCATION APPROVED UNDERGROUND STRUCTURES	B.M. ELEV.	FIELD BOOK #
SUPV. U/G STRUCTURES COMMITTEE		
DATE		
NO. REVISIONS	DATE	BY

CITY OF WINNIPEG  
WATER AND WASTE  
ENGINEERING DIVISION

DESIGNED BY SC  
CHECKED BY TW

DRAWN BY CJH  
APPROVED BY KZ

HOR. SCALE 1:250  
VERTICAL 1:50

RELEASED FOR CONSTRUCTION

DATE 2006 08 04

ENGINEER'S SEAL

ORIGINAL SIGNED BY S.R.J. COURNOYER 06/08/04

BID OPPORTUNITY: 303-2006  
FILENAME: D-8947.dwg  
PLOT DATE: 2006 08 04

THE CITY OF WINNIPEG  
WATER AND WASTE DEPARTMENT

2005 WATERMAIN RENEWALS

DOWKER AVENUE  
CROWSON BAY (W LEG) TO  
CROWSON BAY (E LEG)

SHEET 3 OF 10  
CITY DRAWING NUMBER D-8947