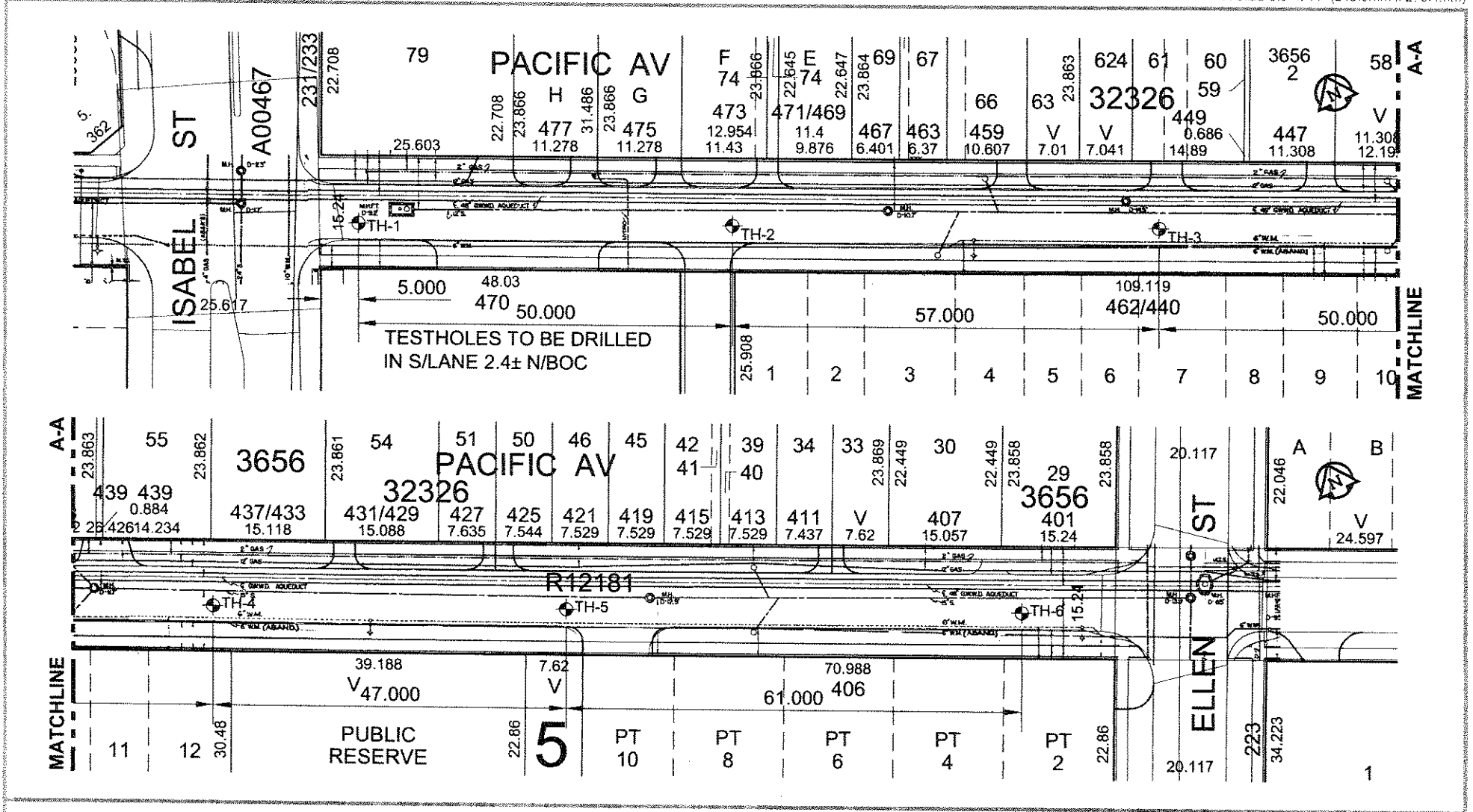


PACIFIC AVENUE

ISABEL STREET TO ELLEN STREET

2006 STREET RENEWAL PROGRAM

GEOTECHNICAL INVESTIGATION



The City of Winnipeg
 Public Works Department-Engineering Division
 2006 Residential Street Renewal Program

**Pacific Avenue-Testhole Locations
 From Isabel Street to Ellen Street**

TESTHOLE TH6



Project Name: 2006 City of Winnipeg Streets Reconstruction

Date Drilled: January 13, 2006

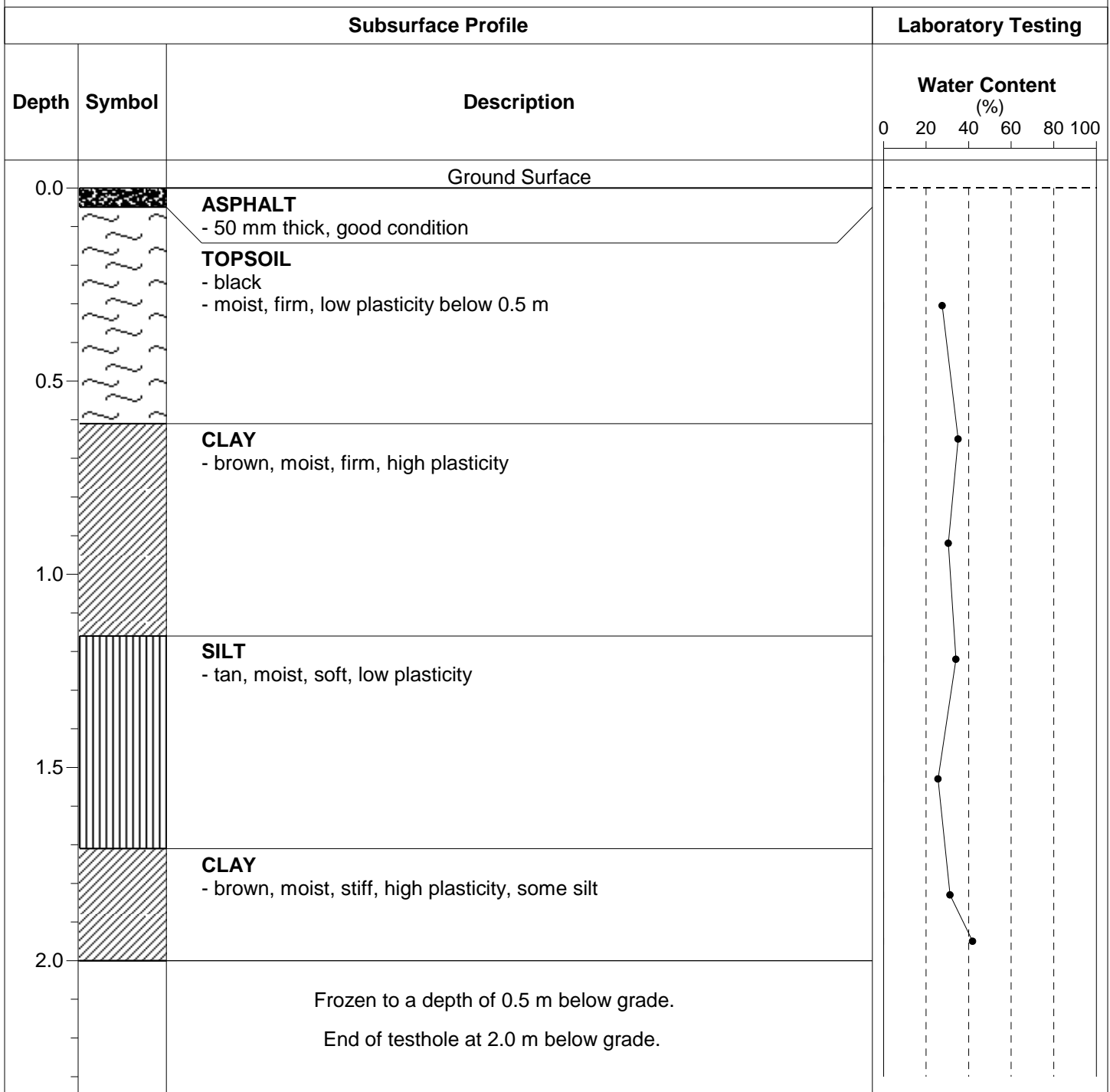
Client: UMA Engineering Ltd.

Depth of Testhole: 2.0 m

Site: Pacific Avenue

Logged by: Robert Brown

Testhole Location: 2 m E of 407/401 property line, 1.5 m N of curb



TESTHOLE TH1



Project Name: 2006 City of Winnipeg Streets Reconstruction

Date Drilled: January 13, 2006

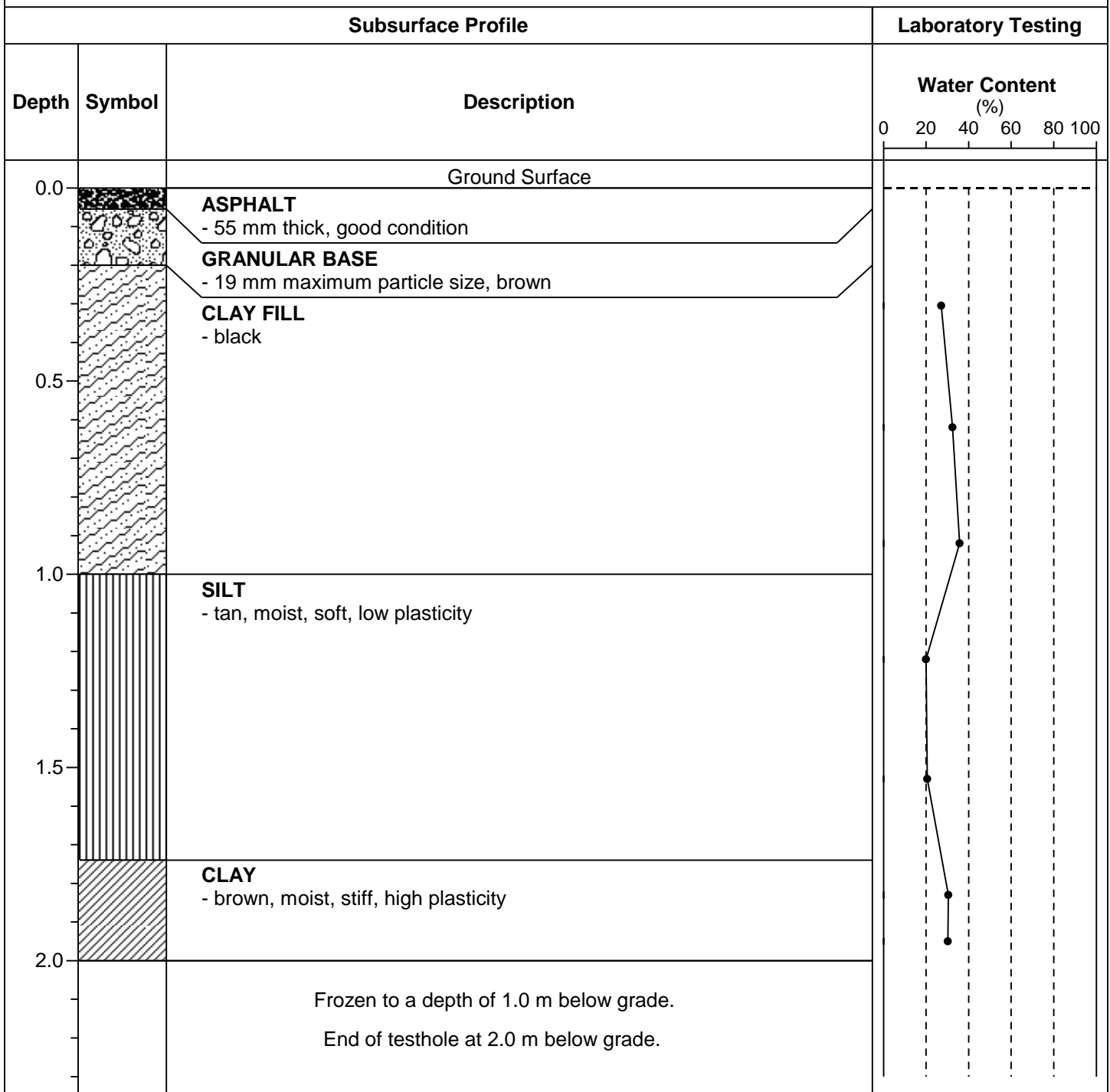
Client: UMA Engineering Ltd.

Depth of Testhole: 2.0 m

Site: Pacific Avenue

Logged by: Robert Brown

Testhole Location: 470 Pacific Ave., 6.5 m E of west building line, 1.1 m N of intersection curb to west



TESTHOLE TH3



Project Name: 2006 City of Winnipeg Streets Reconstruction

Date Drilled: January 13, 2006

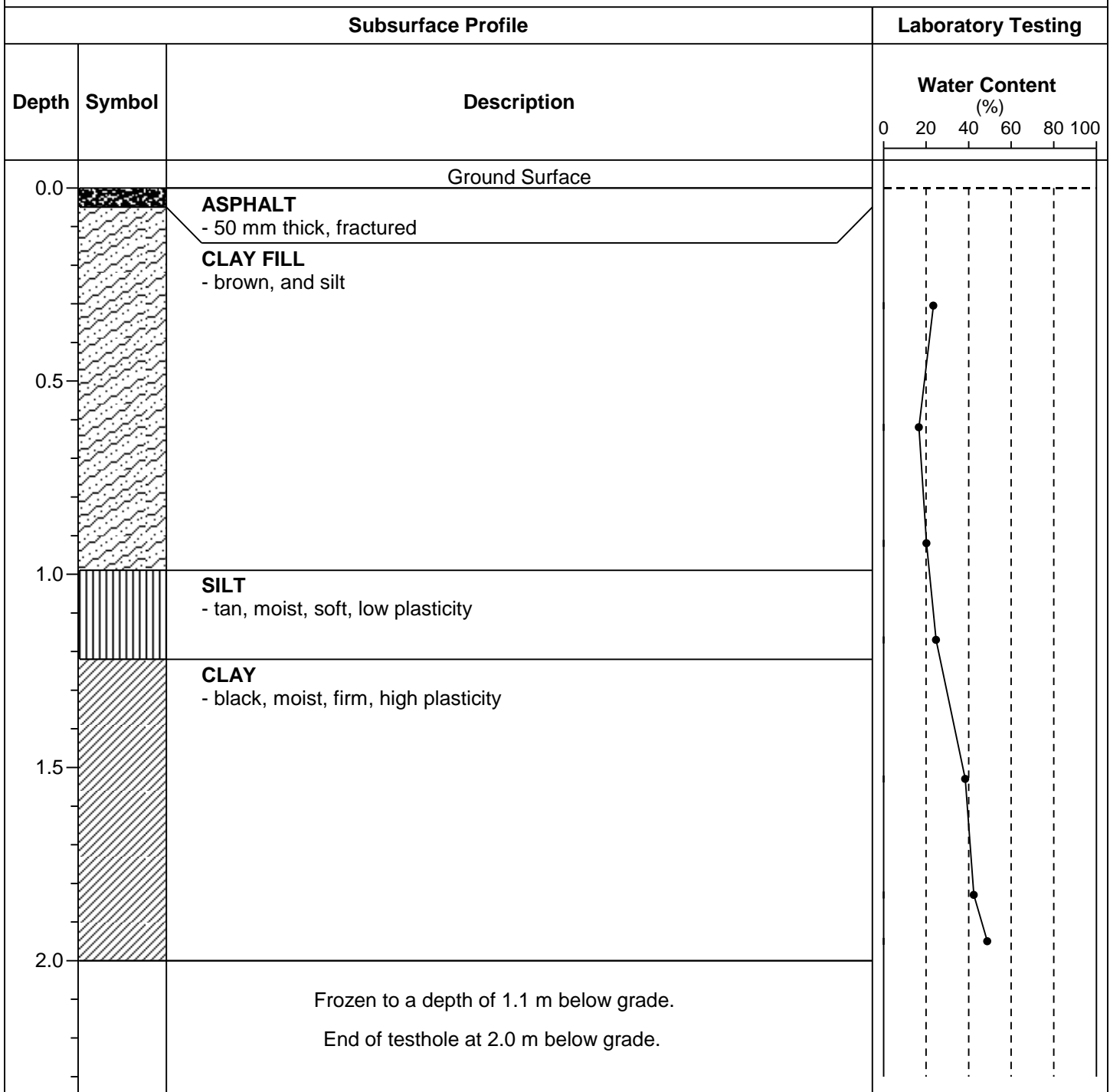
Client: UMA Engineering Ltd.

Depth of Testhole: 2.0 m

Site: Pacific Avenue

Logged by: Robert Brown

Testhole Location: 450 Pacific Ave., 2.0 m W of west building line, 1.5 m N of curb



TESTHOLE TH4



Project Name: 2006 City of Winnipeg Streets Reconstruction

Date Drilled: January 13, 2006

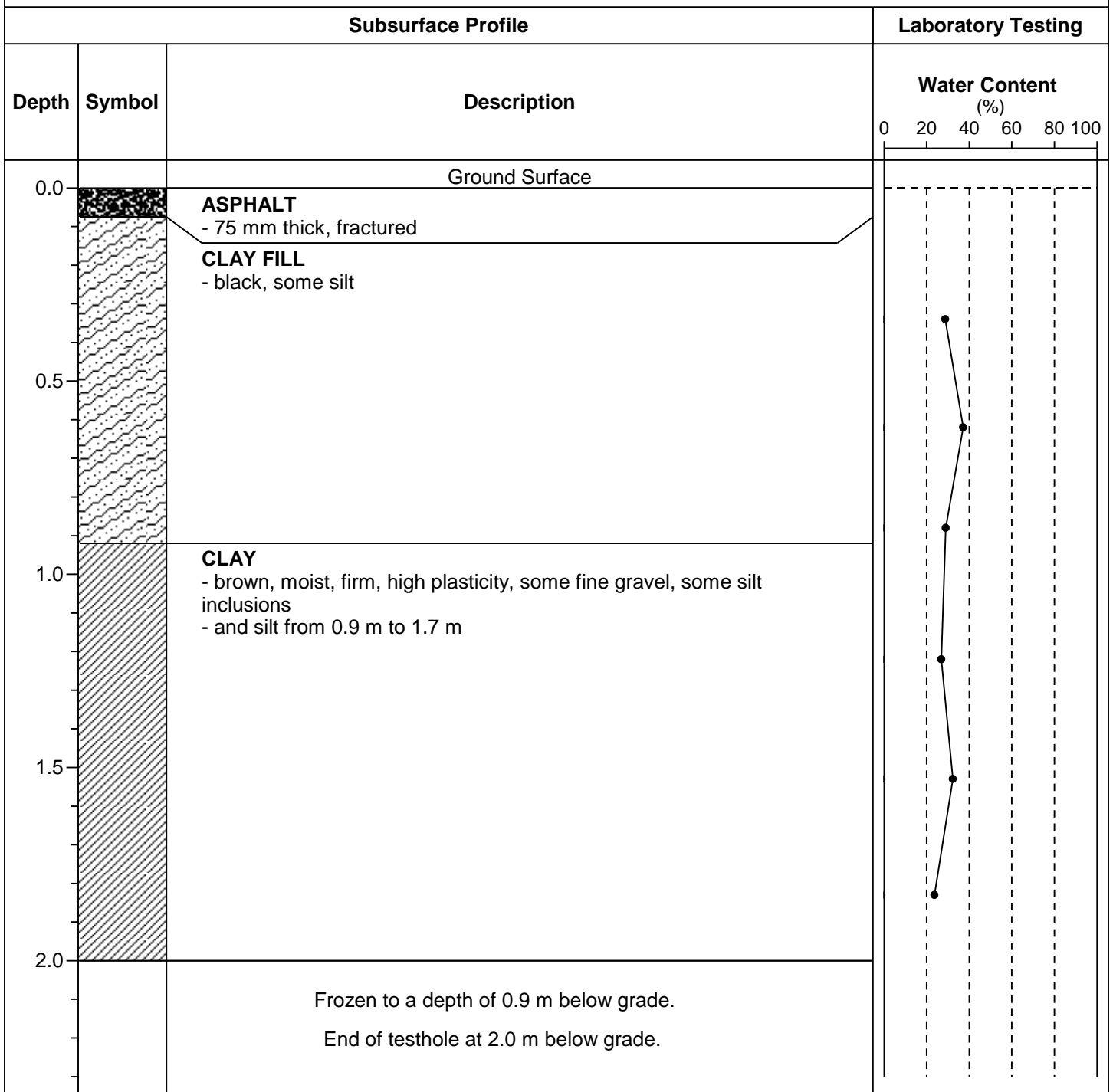
Client: UMA Engineering Ltd.

Depth of Testhole: 2.0 m

Site: Pacific Avenue

Logged by: Robert Brown

Testhole Location: 440 Pacific Ave., 2.0 m W of east building line, 1.6 m N of curb



TESTHOLE TH5



Project Name: 2006 City of Winnipeg Streets Reconstruction

Date Drilled: January 13, 2006

Client: UMA Engineering Ltd.

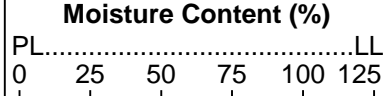
Depth of Testhole: 2.0 m

Site: Pacific Avenue

Logged by: Robert Brown

Testhole Location: 421 Pacific Ave., 1.1 m E of west building line, 2.2 m N of curb

Subsurface Profile			Laboratory Testing															
Depth (m)	Symbol	Description	Moisture Content (%)				Gravel (%)	Sand (%)	Silt (%)	Clay (%)								
			PL	LL														
			0	25	50	75	100	125										
0.0		<p>Ground Surface</p> <p>ASPHALT - 110 mm thick, good condition</p>																
0.0 - 1.1		<p>CLAY - black - brown below 0.5 m</p>																
1.1 - 1.7		<p>SILT - tan, moist, soft, low plasticity</p>																
1.7 - 2.0		<p>CLAY - brown, moist, firm, high plasticity</p>																
2.0		<p>Frozen to a depth of 1.1 m below grade. End of testhole at 2.0 m below grade.</p>																



Gravel (%)	Sand (%)	Silt (%)	Clay (%)
0.0	3.5	63.0	33.5

