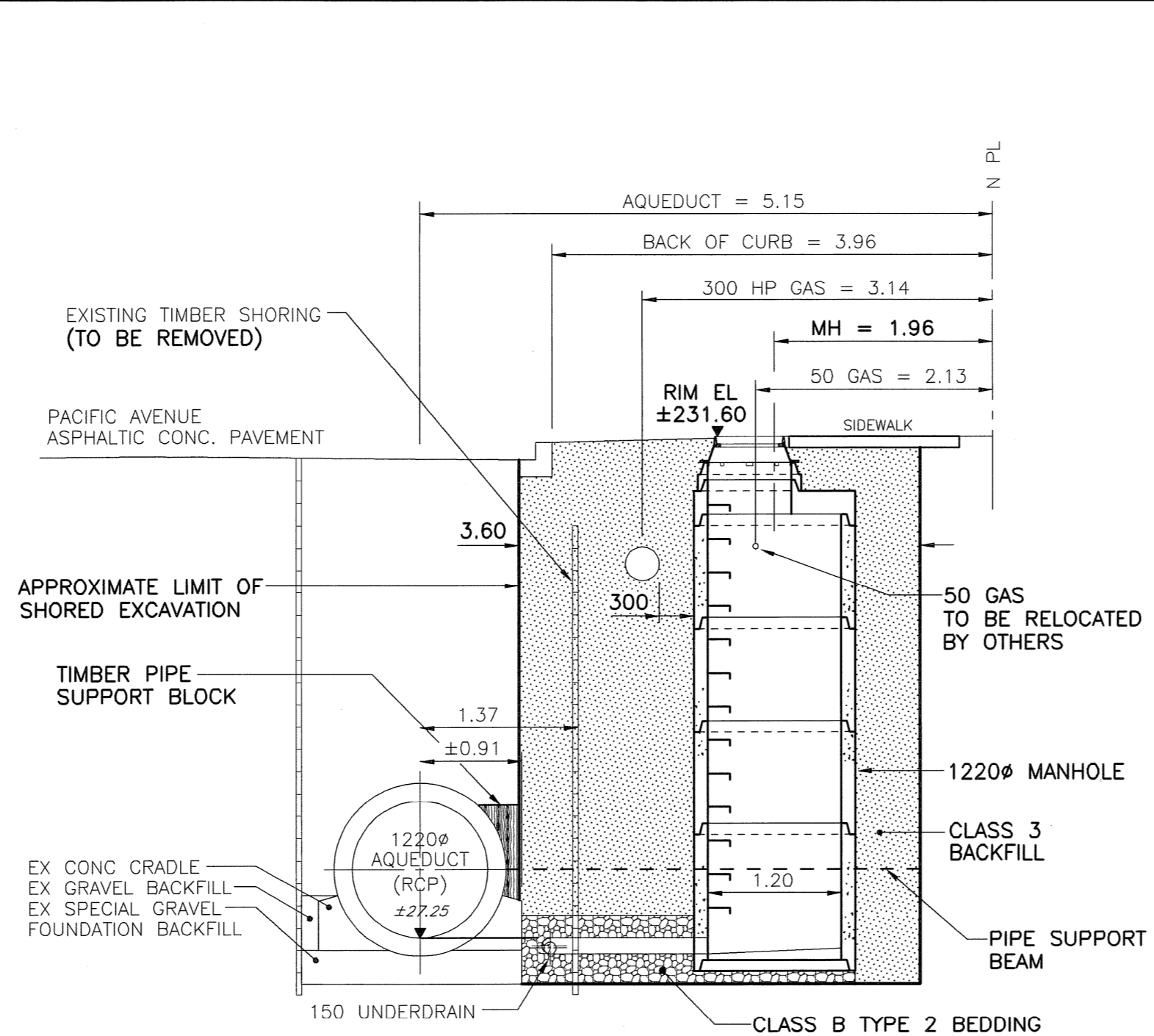
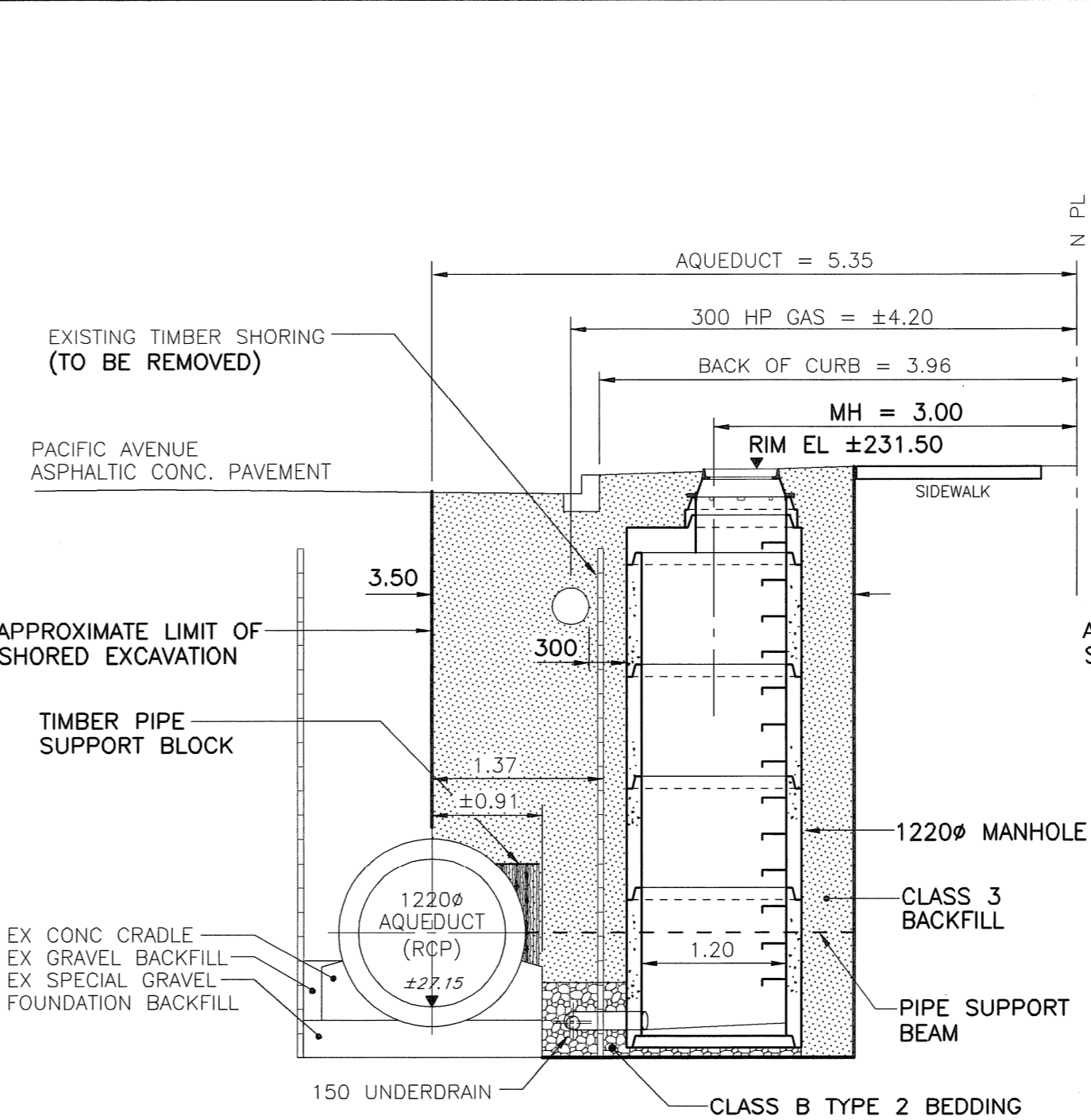


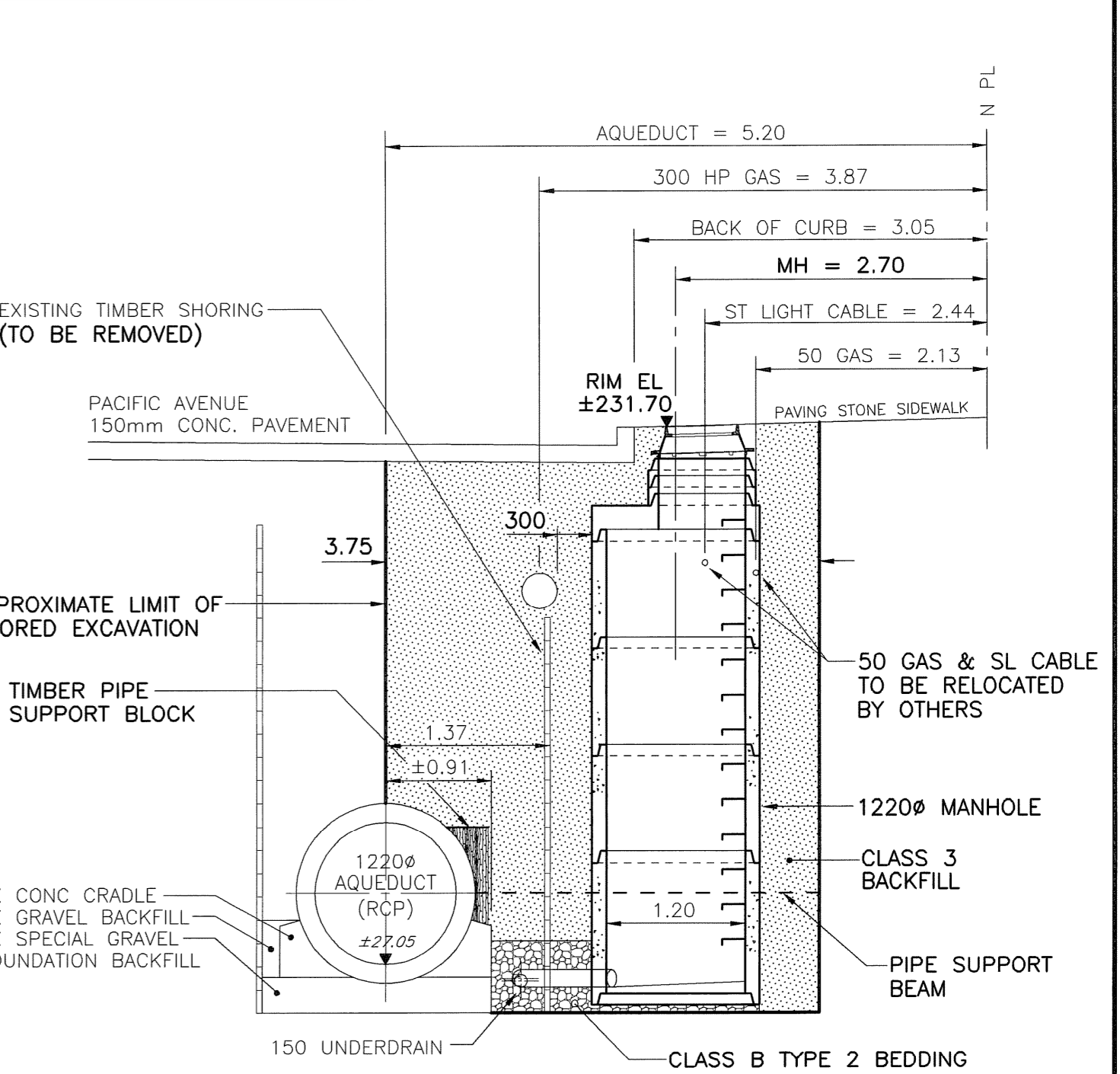
SECTION AT 585 AND 523 PACIFIC AV
UMH105-0104 AND UMH105-0284
SCALE 1:50



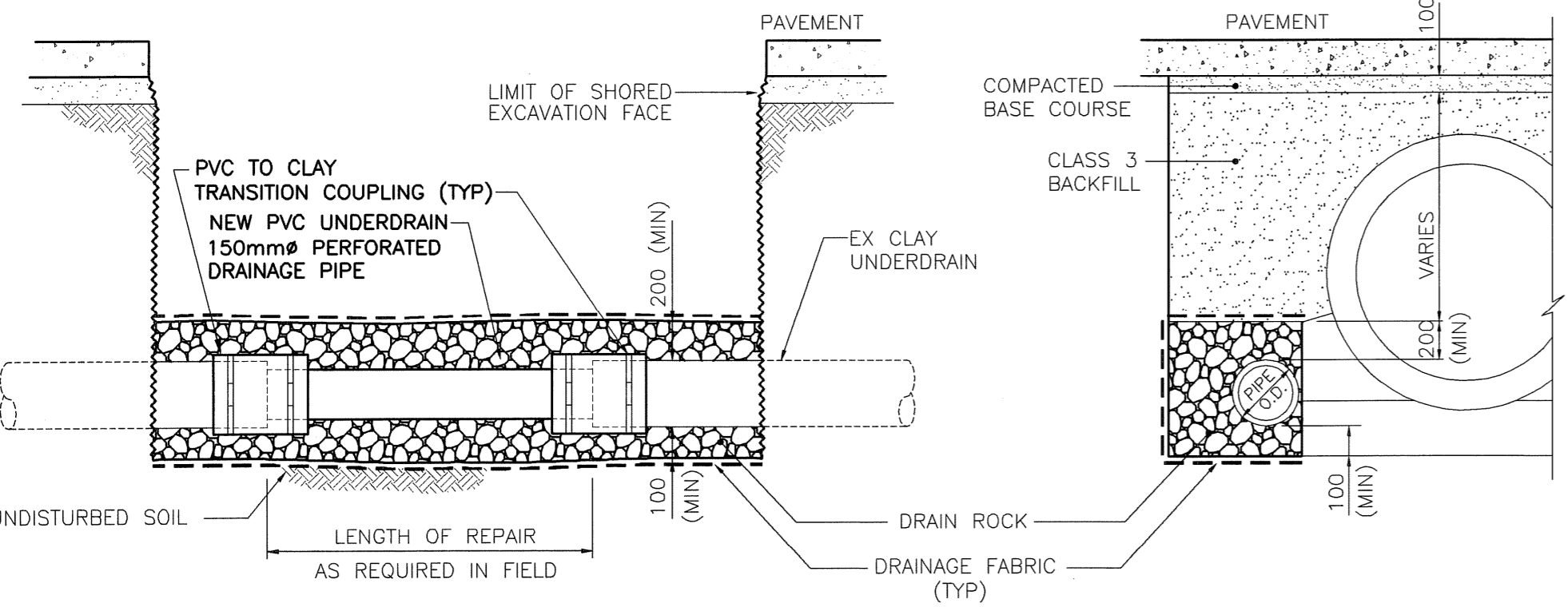
SECTION AT 439 PACIFIC AV
UMH106-0064
SCALE 1:50



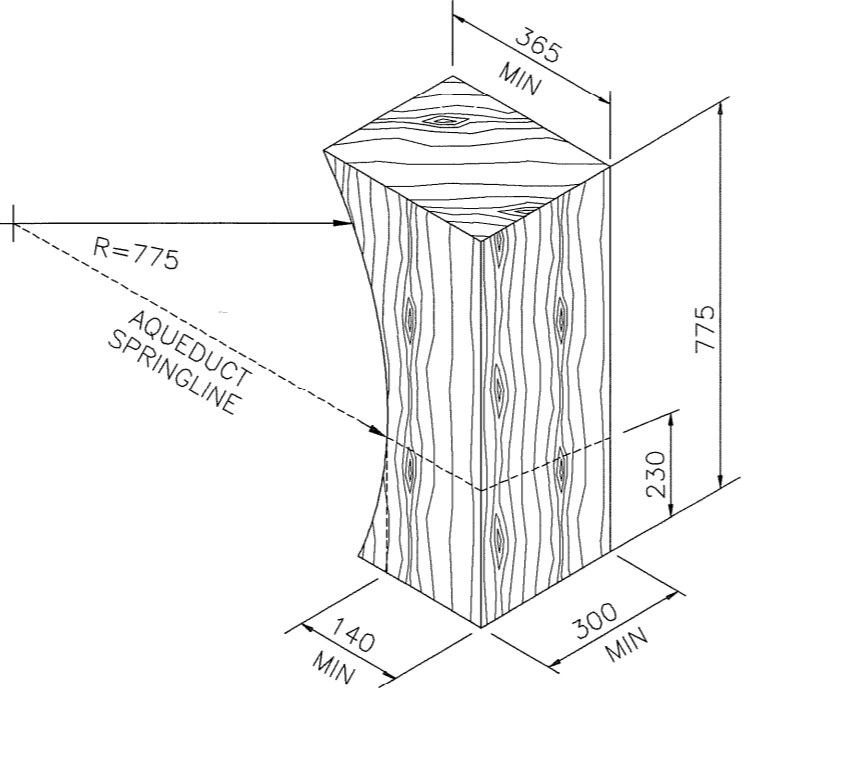
SECTION AT 355 PACIFIC AV
UMH106-0346
SCALE 1:50



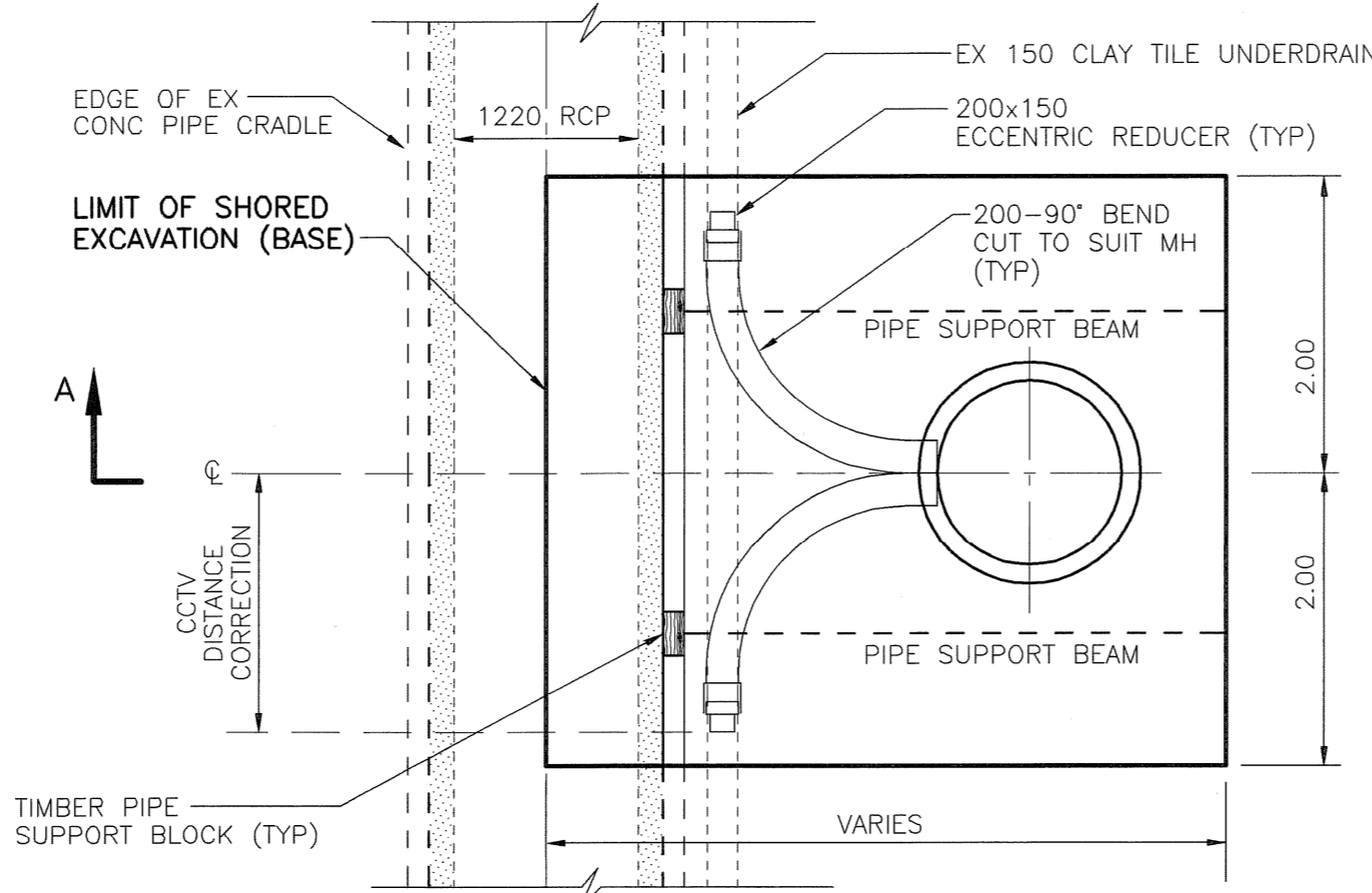
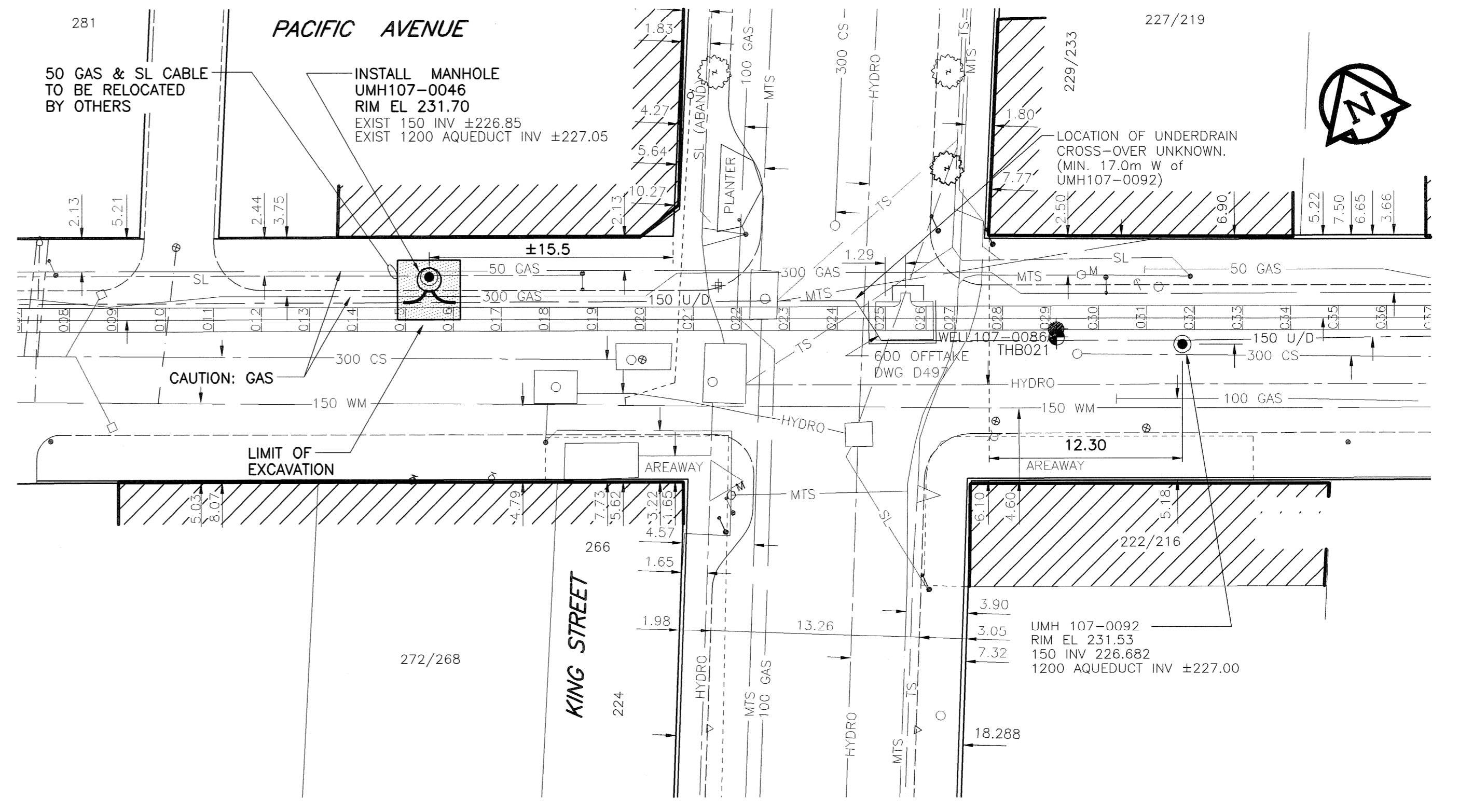
SECTION AT KING ST
UMH107-0046
SCALE 1:50



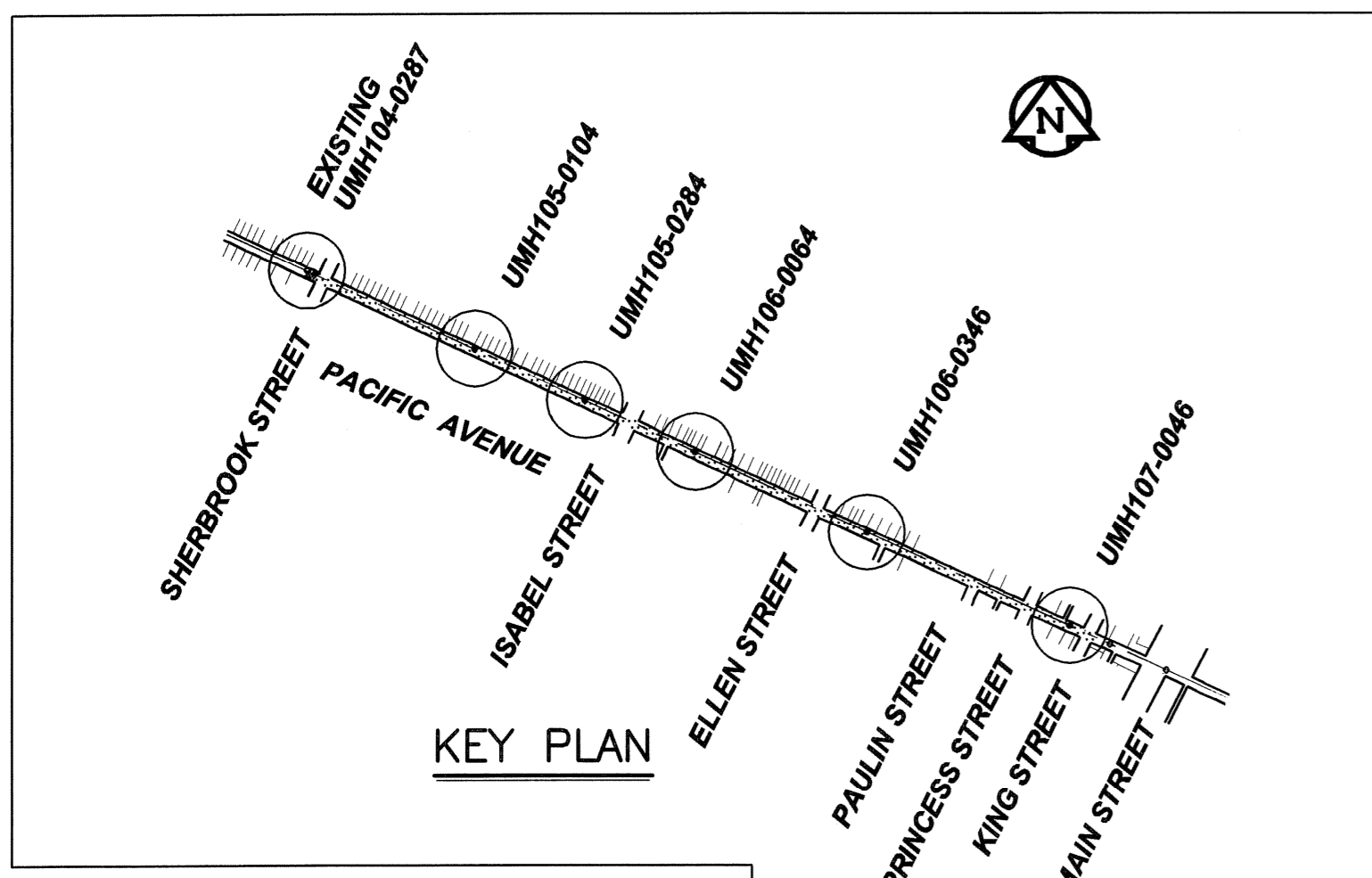
TYPICAL UNDERDRAIN POINT REPAIR
NTS



TYPICAL TIMBER PIPE SUPPORT BLOCK
NTS



TYPICAL MANHOLE PLAN DETAIL
1:50



KEY PLAN

WARNING
IF POWER EQUIPMENT OR EXPLOSIVES ARE TO BE USED FOR EXCAVATION ON THIS PROJECT, THE CONTRACTOR MUST:
1) NOTIFY THE GAS COMPANY OF THE PROPOSED LOCATION OF EXCAVATION.
2) TAKE PRECAUTION TO AVOID DAMAGE TO GAS COMPANY INSTALLATIONS.
SEE PROVINCIAL REGULATION 140/92 FOR DETAILS

EXISTING	LEGEND - PLAN	PROPOSED	EXISTING	LEGEND - PLAN	PROPOSED	EXISTING	LEGEND - PROFILE	PROPOSED
150 mm WM	WATERMAIN	150 mm WM	HYDRO	150 mm WM	WATERMAIN	300 mm LDS	LAND DRAINAGE SEWER	300 mm LDS
250 mm WWS	WASTE WATER SEWER	250 mm WWS	MTS	250 mm WWS	WASTE WATER SEWER	250 mm WWS	WASTE WATER SEWER	250 mm WWS
300 mm LDS	LAND DRAINAGE SEWER	300 mm LDS	GAS	300 mm LDS	LAND DRAINAGE SEWER	300 mm LDS	LAND DRAINAGE SEWER	300 mm LDS
250 mm WWS	WASTE WATER SEWER	250 mm WWS	CONCRETE	250 mm WWS	WASTE WATER SEWER	250 mm WWS	WASTE WATER SEWER	250 mm WWS
○	MANHOLE	●	ASPHALT	○	MANHOLE	○	MANHOLE	○
□	CATCH BASIN	■	CURB STOP	□	CATCH BASIN	□	CATCH BASIN	□
△	CURB INLET	▲	REDUCER	△	CURB INLET	△	CURB INLET	△
⊕	CULVERT	⊕	COUPLING	⊕	CULVERT	⊕	CULVERT	⊕
+	SURVEY BAR	+	ANODE	+	SURVEY BAR	+	SURVEY BAR	+

LOCATION APPROVED
UNDERGROUND STRUCTURES
DATE

NOTE:
LOCATION OF UNDERGROUND STRUCTURES AS SHOWN ARE BASED ON THE BEST INFORMATION AVAILABLE, BUT NO GUARANTEE IS GIVEN THAT ALL EXISTING UTILITIES ARE SHOWN OR THAT THE GIVEN LOCATIONS ARE EXACT. CONFIRMATION OF EXISTENCE AND EXACT LOCATION OF ALL SERVICES MUST BE OBTAINED FROM THE INDIVIDUAL UTILITIES BEFORE PROCEEDING WITH CONSTRUCTION.

NO.	REVISIONS	DATE	BY
0	ISSUED FOR CONSTRUCTION	06/05/31	KMB

METRIC
WHOLE NUMBERS INDICATE MILLIMETRES
DECIMALIZED NUMBERS INDICATE METRES

UMA AECOM

© 2005 UMA ENGINEERING LTD. ALL RIGHTS RESERVED.

DESIGNED BY: MAG
CHECKED BY: [Signature]
DRAWN BY: KMB/MAG
APPROVED BY: [Signature]
HOR. SCALE: 1:250
VERTICAL: -
DATE: 06/06/05

APCM
Certificate of Authorization
UMA Engineering Ltd.
No. 256 Expiry: April 30, 2007

ENGINEER'S SEAL
PROVINCE OF MANITOBA
C.C. MACEY
REGISTERED ENGINEER

CONSULTANT DRAWING NO. 14
D265-210-00

THE CITY OF WINNIPEG
Winnipeg WATER AND WASTE DEPARTMENT

AQUEDUCT ASSET PRESERVATION
BRANCH I AQUEDUCT UNDERDRAIN
PACIFIC AVENUE - SHERBROOK ST TO KING ST

MANHOLE INSTALLATIONS
UMH107-0046
& TYPICAL MANHOLE DETAILS

SHEET 14 OF 14
CITY DRAWING NUMBER
REV
D-9023

NOTE:
CONTACT THE WATER AND WASTE DEPARTMENT CONSTRUCTION SERVICES CO-ORDINATOR, ANDY VINCENT, AT 986-3823 AT A MINIMUM OF 7 DAYS PRIOR TO CROSSING OR WORKING ADJACENT TO AQUEDUCT TO ARRANGE FOR INSPECTION.

BID OPPORTUNITY 299-2006

PLOT SCALE: 1=0.25
AutoCAD 2000 P:\0265\210-00\AutoCAD\Drafting\SHERBROOK\MAN.dwg 06-05-29 4:45pm kberard