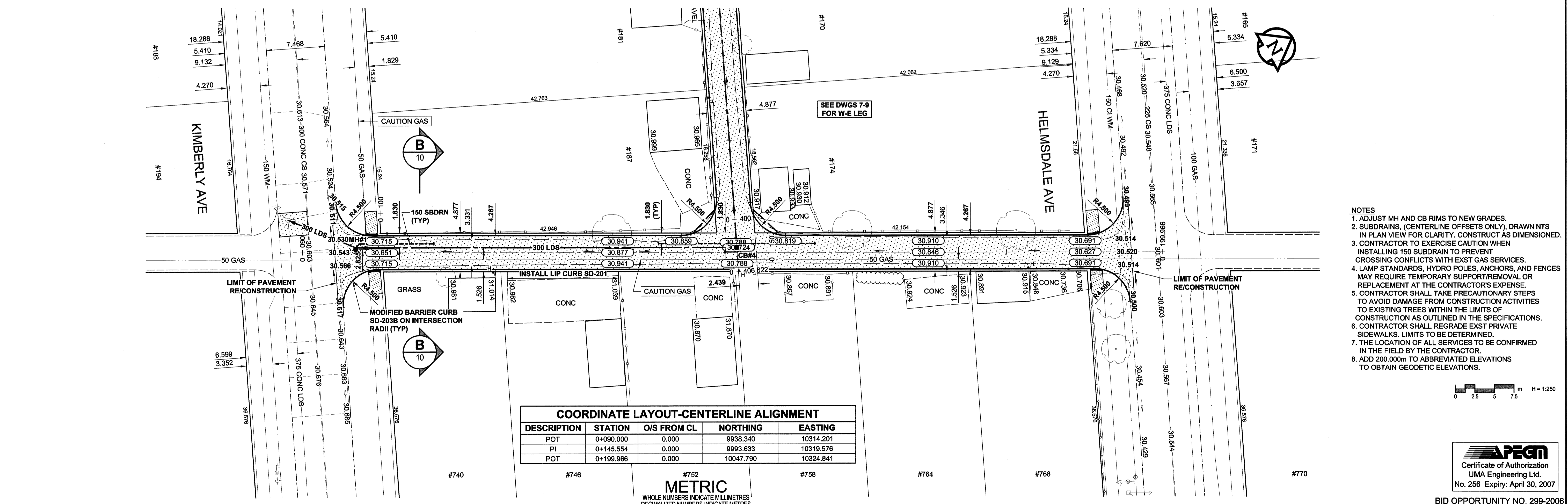
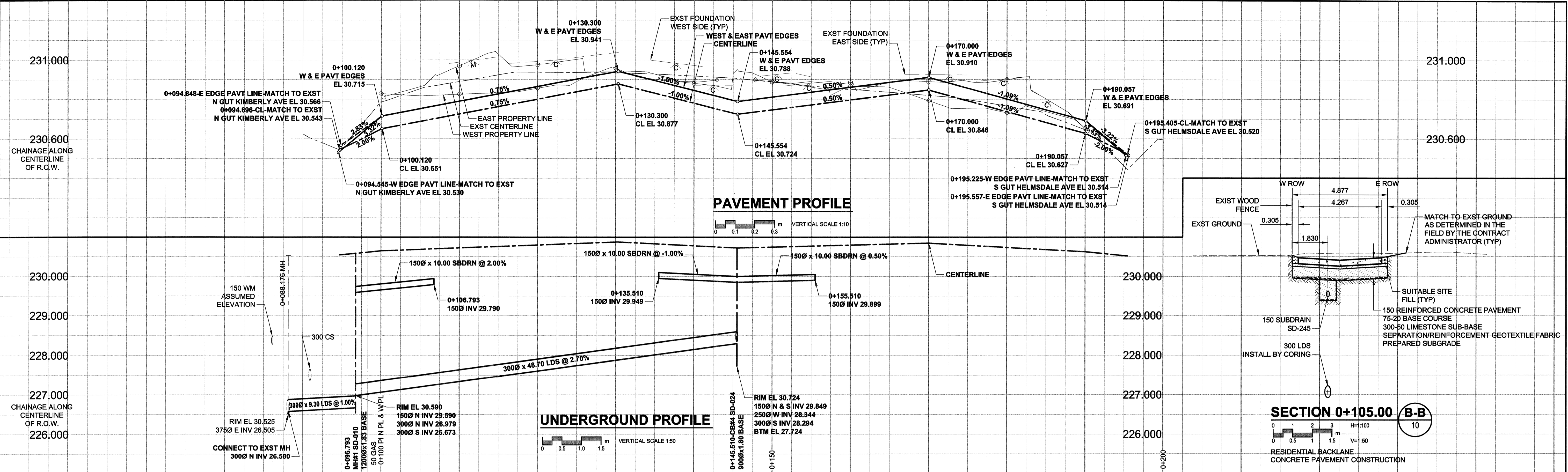


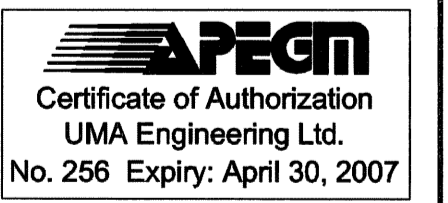
A1 SIZE 23.4" x 33.1" (594mm x 841mm)

PLOT: 531Z/2006 10:34:07 AM

UMA FILE NAME: 0265-379-00_01-CT1010_RX.dwg Saved By: cooperk



- NOTES**
- ADJUST MH AND CB RIMS TO NEW GRADES.
 - SUBDRAINS, (CENTERLINE OFFSETS ONLY), DRAWN NTS IN PLAN VIEW FOR CLARITY. CONSTRUCT AS DIMENSIONED.
 - CONTRACTOR TO EXERCISE CAUTION WHEN INSTALLING 150 SUBDRAIN TO PREVENT CROSSING CONFLICTS WITH EXST GAS SERVICES.
 - LAMP STANDARDS, HYDRO POLES, ANCHORS, AND FENCES MAY REQUIRE TEMPORARY SUPPORT/REMOVAL OR REPLACEMENT AT THE CONTRACTOR'S EXPENSE.
 - CONTRACTOR SHALL TAKE PRECAUTIONARY STEPS TO AVOID DAMAGE FROM CONSTRUCTION ACTIVITIES TO EXISTING TREES WITHIN THE LIMITS OF CONSTRUCTION AS OUTLINED IN THE SPECIFICATIONS.
 - CONTRACTOR SHALL REGRADE EXST PRIVATE SIDEWALKS. LIMITS TO BE DETERMINED.
 - THE LOCATION OF ALL SERVICES TO BE CONFIRMED IN THE FIELD BY THE CONTRACTOR.
 - ADD 300.000m TO ABBREVIATED ELEVATIONS TO OBTAIN GEODETIC ELEVATIONS.



BID OPPORTUNITY NO. 299-2006

<p>NATURAL GAS</p> <p>COMMUNICATION</p> <p>HYDRO</p> <p>CATV</p> <p>TRAFFIC SIGNALS</p> <p>LAND DRAINAGE SEWER</p> <p>SANITARY/COMBINED SEWER</p> <p>CATCHBASIN LEAD</p> <p>WATERMAIN</p> <p>SUBDRAIN</p> <p>DITCH</p> <p>EXISTING</p>	<p>MANHOLE</p> <p>CATCH BASIN / CATCH PIT</p> <p>C & G INLET WITH BOX</p> <p>TREE</p> <p>TEST HOLE</p> <p>PROPERTY LINE</p> <p>SURVEY BAR</p> <p>CHAIN LINK/WOOD FENCE</p> <p>BOC/EOPAVT</p> <p>ELEVATION</p> <p>33.000</p> <p>33.100</p> <p>EXISTING</p>	<p>CONCRETE PAVEMENT</p> <p>ASPHALT PAVEMENT</p> <p>CONC. SIDEWALK/MEDIAN</p> <p>PAVING STONE</p> <p>TOPSOIL & SOD</p> <p>GRAVEL</p> <p>RAMP CURB</p> <p>REMOVAL</p> <p>EXISTING</p>	<p>LOCATION APPROVED</p> <p>UNDERGROUND STRUCTURES</p> <p>DATE</p> <p>COMMITTEE</p> <p>NOTE:</p> <p>LOCATION OF UNDERGROUND STRUCTURES AS SHOWN ARE BASED ON THE BEST INFORMATION AVAILABLE. BUT NO GUARANTEE IS GIVEN THAT ALL EXISTING UTILITIES ARE SHOWN OR THAT THE GIVEN LOCATIONS ARE EXACT. CONFIRMATION OF EXISTENCE AND EXACT LOCATION OF ALL SERVICES MUST BE OBTAINED FROM THE INDIVIDUAL UTILITIES BEFORE PROCEEDING WITH CONSTRUCTION.</p>	<p>BM 12.012</p> <p>ELEV 231.029m</p>	<p>UMA AECOM</p> <p>© 2006 UMA ENGINEERING LTD. ALL RIGHTS RESERVED.</p> <p>DESIGNED BY WRJ</p> <p>CHECKED BY RPS</p> <p>DRAWN BY DID</p> <p>APPROVED BY [Signature]</p> <p>HOR. SCALE 1:250</p> <p>VERT. SCALE AS SHOWN</p> <p>NO. REVISIONS</p> <p>DATE 06/05/05</p>	<p>PROFESSIONAL'S SEAL</p> <p>PROVINCE OF MANITOBA</p> <p>R.P. BRUCE</p> <p>REGISTERED PROFESSIONAL ENGINEER</p> <p>CONSULTANT DRAWING NO. 0265-379-00_01-CT1010_RX</p>	<p>THE CITY OF WINNIPEG</p> <p>PUBLIC WORKS DEPARTMENT</p> <p>ENGINEERING DIVISION</p> <p>HELMSDALE/KIMBERLY S/N ALLEY</p> <p>KIMBERLY AVE TO HELMSDALE AVE</p> <p>NEW CONSTRUCTION</p> <p>HORIZONTAL AND VERTICAL ALIGNMENT</p> <p>FROM STA 0+100 TO STA 0+200</p>	<p>CITY DRAWING NUMBER N/A</p> <p>SHEET 10 OF 14</p> <p>DRAWING No. 10</p> <p>REV 0</p>
--	---	--	--	---------------------------------------	--	---	--	---