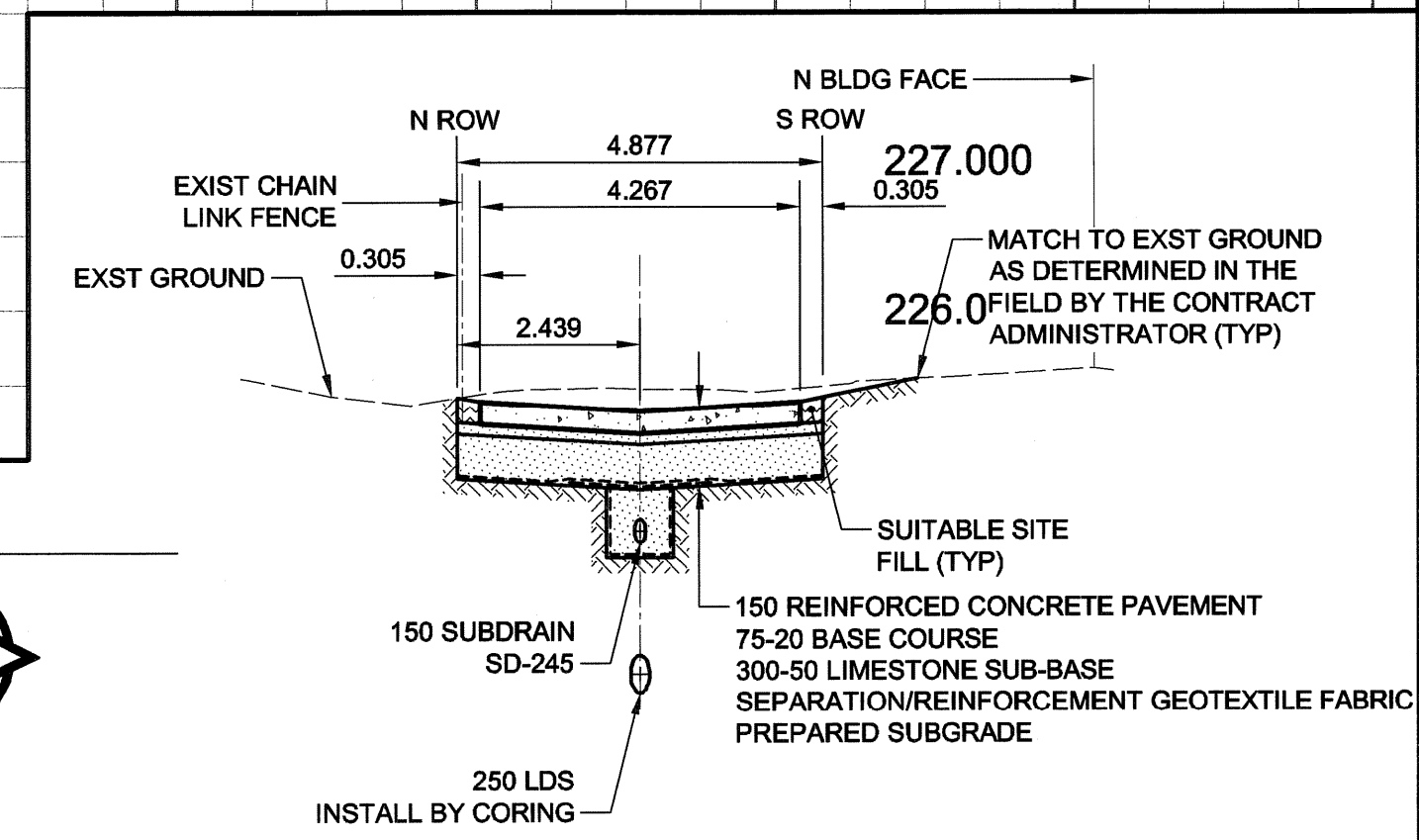
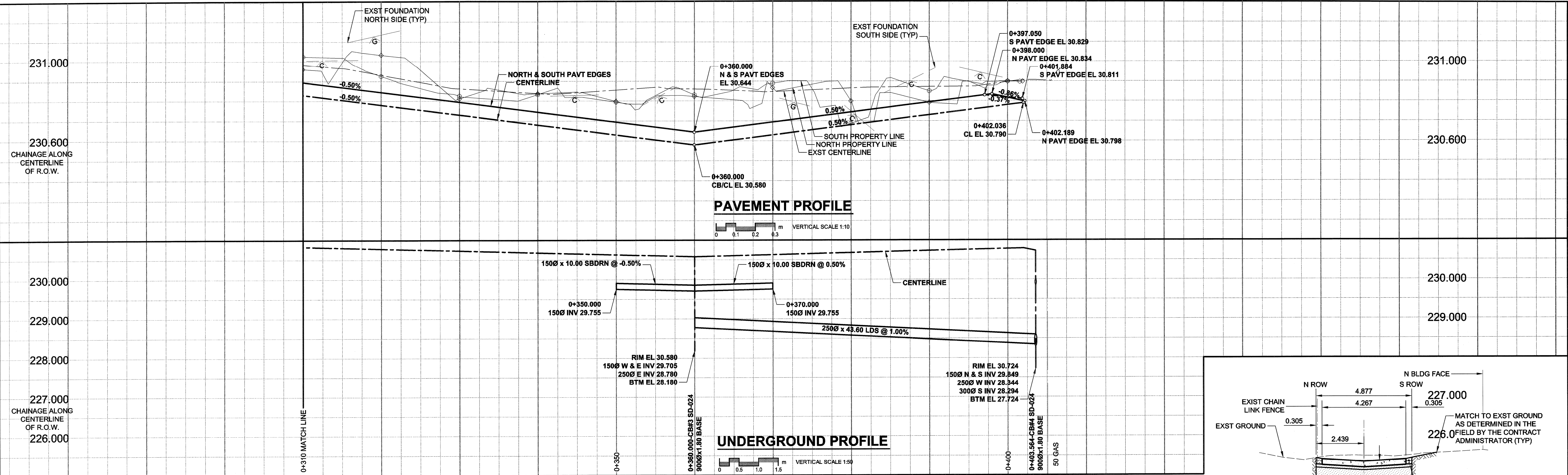


A1 SIZE 23.4" x 33.1" (594mm x 841mm)

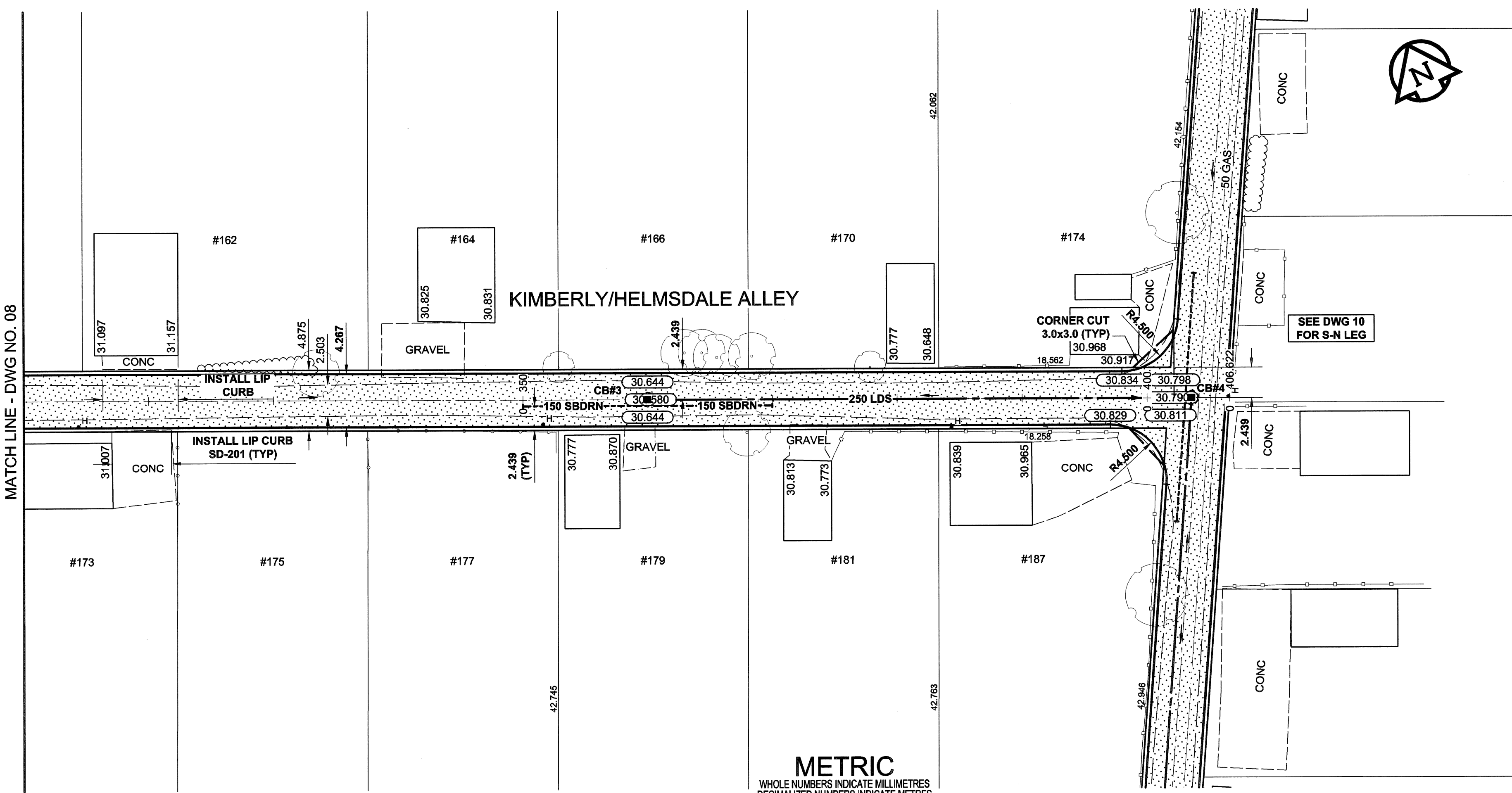
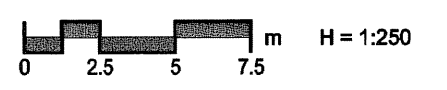
PLOT: 5/31/2006 10:32:56 AM

UMA FILE NAME: 0265-379-00_01-CT1009_RX.dwg Saved By: coopack



SECTION 0+180.00 (A-A)
 RESIDENTIAL BACKLANE CONCRETE PAVEMENT CONSTRUCTION

- NOTES**
- ADJUST MH AND CB RIMS TO NEW GRADES.
 - SUBDRAINS, (CENTERLINE OFFSETS ONLY), DRAWN NTS IN PLAN VIEW FOR CLARITY. CONSTRUCT AS DIMENSIONED.
 - CONTRACTOR TO EXERCISE CAUTION WHEN INSTALLING 150 SUBDRAIN TO PREVENT CROSSING CONFLICTS WITH EXST GAS SERVICES.
 - LAMP STANDARDS, HYDRO POLES, ANCHORS, AND FENCES MAY REQUIRE TEMPORARY SUPPORT/REMOVAL OR REPLACEMENT AT THE CONTRACTOR'S EXPENSE.
 - CONTRACTOR SHALL TAKE PRECAUTIONARY STEPS TO AVOID DAMAGE FROM CONSTRUCTION ACTIVITIES TO EXISTING TREES WITHIN THE LIMITS OF CONSTRUCTION AS OUTLINED IN THE SPECIFICATIONS.
 - CONTRACTOR SHALL REGRADE EXST PRIVATE SIDEWALKS. LIMITS TO BE DETERMINED.
 - THE LOCATION OF ALL SERVICES TO BE CONFIRMED IN THE FIELD BY THE CONTRACTOR.
 - ADD 200.00m TO ABBREVIATED ELEVATIONS TO OBTAIN GEODETIC ELEVATIONS.



METRIC
 WHOLE NUMBERS INDICATE MILLIMETRES
 DECIMALIZED NUMBERS INDICATE METRES

<p>NATURAL GAS</p> <p>COMMUNICATION</p> <p>HYDRO</p> <p>CATV</p> <p>TRAFFIC SIGNALS</p> <p>LAND DRAINAGE SEWER</p> <p>SANITARY/COMBINED SEWER</p> <p>CATCHBASIN LEAD</p> <p>WATERMAIN</p> <p>SUBDRAIN</p> <p>DITCH</p>		<p>MANHOLE</p> <p>CATCH BASIN / CATCH PIT</p> <p>C & G INLET WITH BOX</p> <p>TREE</p> <p>TEST HOLE</p> <p>PROPERTY LINE</p> <p>SURVEY BAR</p> <p>CHAIN LINK/WOOD FENCE</p> <p>BOC/EOPAVT</p> <p>ELEVATION</p>		<p>CONCRETE PAVEMENT</p> <p>ASPHALT PAVEMENT</p> <p>CONC. SIDEWALK/MEDIAN</p> <p>PAVING STONE</p> <p>TOPSOIL & SOD</p> <p>GRAVEL</p> <p>RAMP CURB</p> <p>REMOVAL</p>		<p>LOCATION APPROVED</p> <p>UNDERGROUND STRUCTURES</p> <p>SUPR. U/G STRUCTURES DATE COMMITTEE</p> <p>NOTE:</p> <p>LOCATION OF UNDERGROUND STRUCTURES AS SHOWN ARE BASED ON THE BEST INFORMATION AVAILABLE. BUT NO GUARANTEE IS GIVEN THAT ALL EXISTING UTILITIES ARE SHOWN OR THAT THE GIVEN LOCATIONS ARE EXACT. CONFIRMATION OF EXISTENCE AND EXACT LOCATION OF ALL SERVICES MUST BE OBTAINED FROM THE INDIVIDUAL UTILITIES BEFORE PROCEEDING WITH CONSTRUCTION.</p>		<p>BM 12-012</p> <p>ELEV 231.029m</p>		<p>UMA AECOM</p> <p>© 2006 UMA ENGINEERING LTD. ALL RIGHTS RESERVED.</p> <p>DESIGNED BY WRJ</p> <p>CHECKED BY RJP</p> <p>DRAWN BY DID</p> <p>APPROVED BY [Signature]</p> <p>RELEASED FOR CONSTRUCTION [Signature]</p> <p>DATE 08/05/06</p>		<p>PROFESSIONAL'S SEAL</p> <p>PROVINCE OF MANITOBA</p> <p>REGISTERED PROFESSIONAL ENGINEER</p> <p>R. P. BRUCE</p> <p>0265-379-00_01-CT1009_RX</p>		<p>THE CITY OF WINNIPEG</p> <p>Winnipeg</p> <p>PUBLIC WORKS DEPARTMENT</p> <p>ENGINEERING DIVISION</p> <p>HELMSDALE/KIMBERLY W/E ALLEY</p> <p>KILDONAN DR TO 300m EAST</p> <p>NEW CONSTRUCTION</p> <p>HORIZONTAL AND VERTICAL ALIGNMENT</p> <p>FROM STA 0+310 TO S/N ALLEY</p>		<p>CITY DRAWING NUMBER N/A</p> <p>SHEET 9 OF 14</p> <p>DRAWING No. 09</p> <p>REV 0</p>	
--	--	---	--	--	--	--	--	---------------------------------------	--	---	--	---	--	--	--	--	--

BID OPPORTUNITY NO. 299-2006