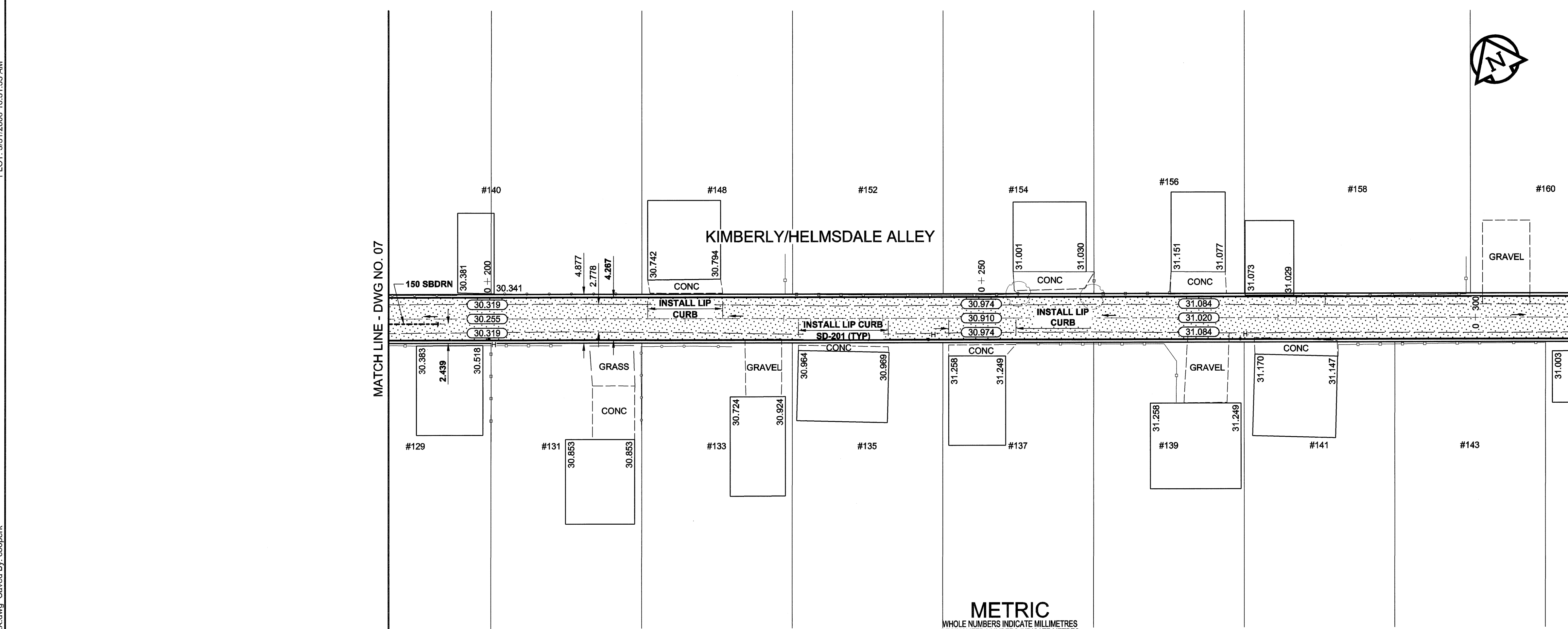
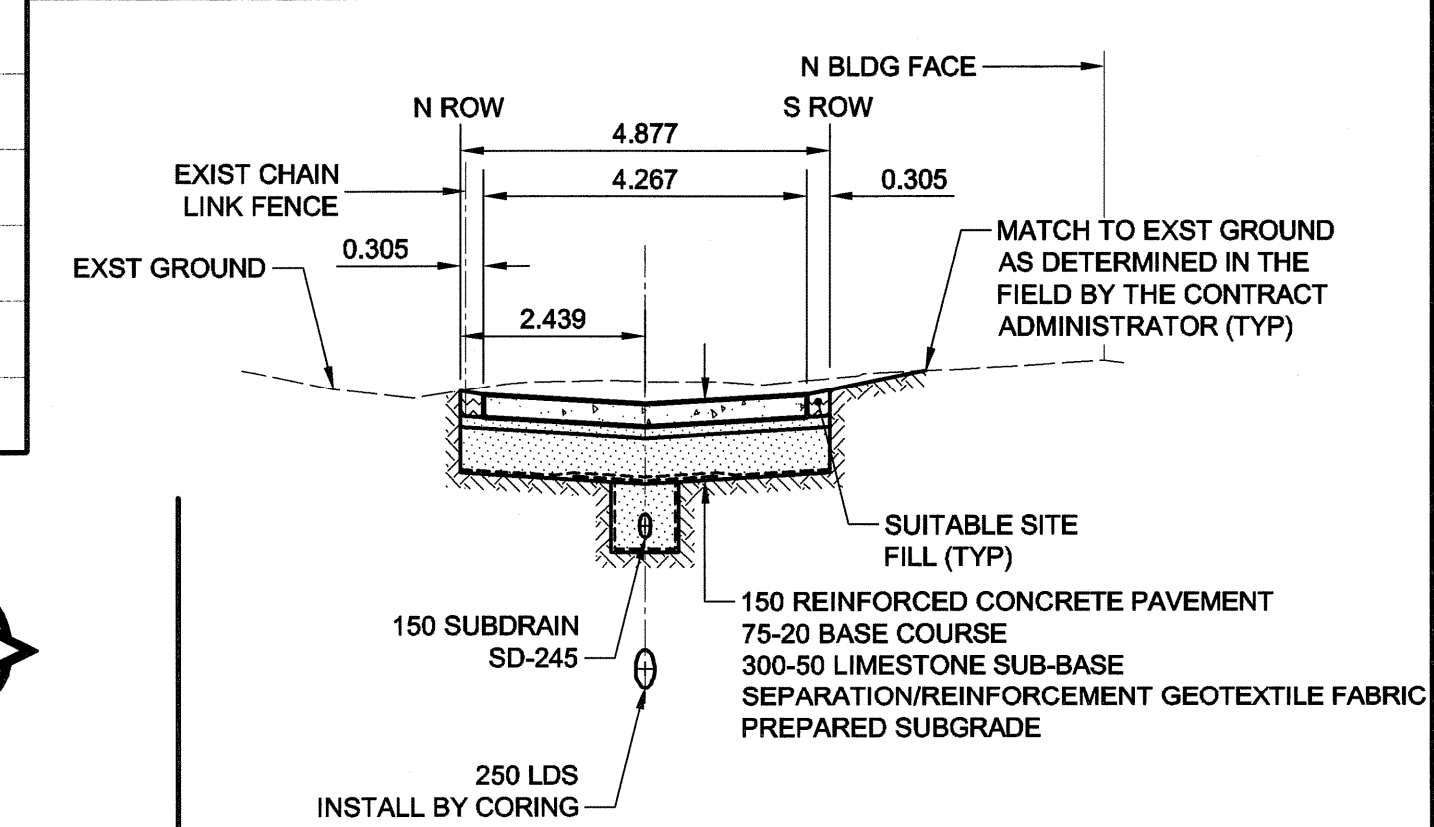
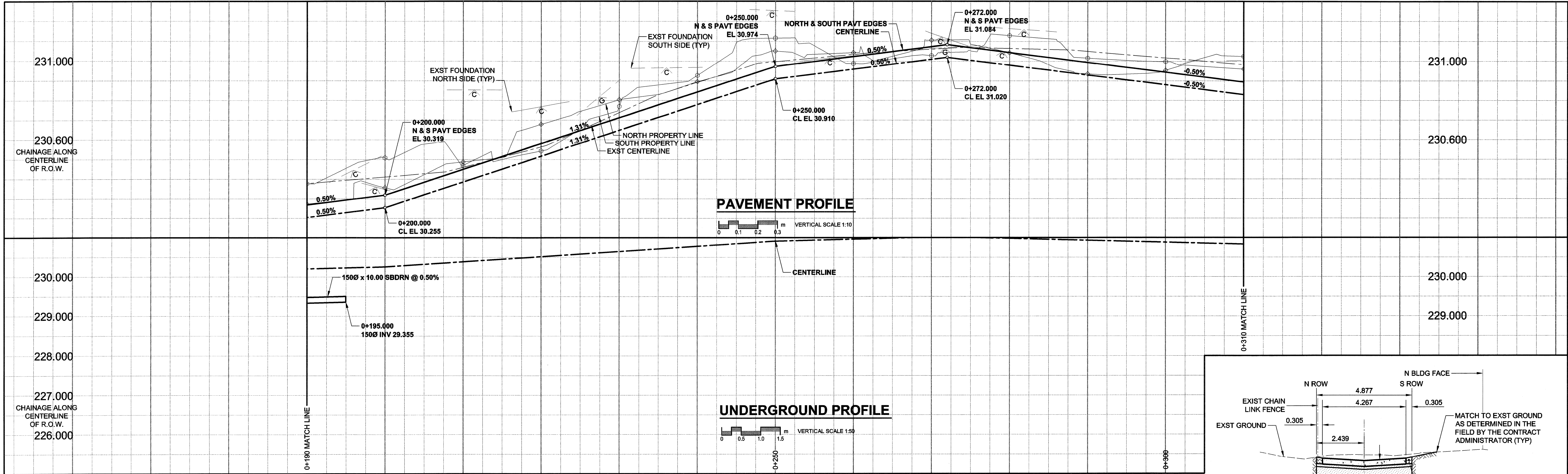


A1 SIZE 23.4" x 33.1" (594mm x 841mm)

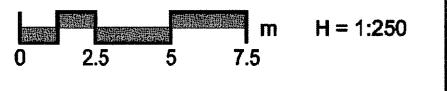
PLOT: 5/31/2006 10:31:53 AM

UMA FILE NAME: 0265-379-00_01-CT1008_RX.dwg Saved By: coopert



SECTION 0+180.00 (A-A)
 0 1 2 3 4 5 6 7 8 9 10 m H=1:100
 0 0.5 1 1.5 2 2.5 3 3.5 4 4.5 5 5.5 6 6.5 7 7.5 8 8.5 9 9.5 10 m V=1:50
 RESIDENTIAL BACKLANE
 CONCRETE PAVEMENT CONSTRUCTION

- NOTES**
- ADJUST MH AND CB RIMS TO NEW GRADES.
 - SUBDRAINS, (CENTERLINE OFFSETS ONLY), DRAWN NTS IN PLAN VIEW FOR CLARITY. CONSTRUCT AS DIMENSIONED.
 - CONTRACTOR TO EXERCISE CAUTION WHEN INSTALLING 150 SUBDRAIN TO PREVENT CROSSING CONFLICTS WITH EXST GAS SERVICES.
 - LAMP STANDARDS, HYDRO POLES, ANCHORS, AND FENCES MAY REQUIRE TEMPORARY SUPPORT/REMOVAL OR REPLACEMENT AT THE CONTRACTOR'S EXPENSE.
 - CONTRACTOR SHALL TAKE PRECAUTIONARY STEPS TO AVOID DAMAGE FROM CONSTRUCTION ACTIVITIES TO EXISTING TREES WITHIN THE LIMITS OF CONSTRUCTION AS OUTLINED IN THE SPECIFICATIONS.
 - CONTRACTOR SHALL REGRADE EXST PRIVATE SIDEWALKS. LIMITS TO BE DETERMINED.
 - THE LOCATION OF ALL SERVICES TO BE CONFIRMED IN THE FIELD BY THE CONTRACTOR.
 - ADD 200.000m TO ABBREVIATED ELEVATIONS TO OBTAIN GEODETIC ELEVATIONS.



APCOM
 Certificate of Authorization
 UMA Engineering Ltd.
 No. 256 Expiry: April 30, 2007

BID OPPORTUNITY NO. 299-2006

---	NATURAL GAS	○	MANHOLE	●	CONCRETE PAVEMENT	▨	LOCATION APPROVED	BM 12.012	PROFESSIONAL'S SEAL	THE CITY OF WINNIPEG PUBLIC WORKS DEPARTMENT ENGINEERING DIVISION HELMSDALE/KIMBERLY W/E ALLEY KILDONAN DR TO 300m EAST NEW CONSTRUCTION HORIZONTAL AND VERTICAL ALIGNMENT FROM STA 0+190 TO STA 0+310	CITY DRAWING NUMBER
---	COMMUNICATION	□	CATCH BASIN / CATCH PIT	■	ASPHALT PAVEMENT	▩	UNDERGROUND STRUCTURES	ELEV 231.029m			N/A
---	HYDRO	△	C & G INLET WITH BOX	■	CONC. SIDEWALK/MEDIAN	▨				DESIGNED BY	WRJ
---	CATV	◇	TREE	○	PAVING STONE	▨			DRAWN BY	DID	DRAWING No.
---	TRAFFIC SIGNALS	⊕	TEST HOLE	○	TOPSOIL & SOD	▨			CHECKED BY	ROB	REV
---	LAND DRAINAGE SEWER	---	PROPERTY LINE	---	GRAVEL	▨			APPROVED BY	R.P. Bruce	08
---	SANITARY/COMBINED SEWER	---	SURVEY BAR	---	RAMP CURB	▨			RELEASED FOR CONSTRUCTION		
---	CATCHBASIN LEAD	---	CHAIN LINK/WOOD FENCE	---	REMOVAL	▨			DATE	JUL 12 2006	
---	WATERMAIN	---	BOC/EOPAVT	---					DATE	06/05/06	
---	SUBDRAIN	---	ELEVATION	---							
---	DITCH	---		---							
---	EXISTING	---	LEGEND - PLAN	---	LEGEND - PLAN	---					
---	NEW	---	LEGEND - PLAN	---	LEGEND - PLAN	---					
---	EXISTING	---	LEGEND - PLAN	---	LEGEND - PLAN	---					
---	NEW	---	LEGEND - PLAN	---	LEGEND - PLAN	---					

LOCATION APPROVED
 UNDERGROUND STRUCTURES

DATE COMMITTEE

NOTE:
 LOCATION OF UNDERGROUND STRUCTURES AS SHOWN ARE BASED ON THE BEST INFORMATION AVAILABLE. BUT NO GUARANTEE IS GIVEN THAT ALL EXISTING UTILITIES ARE SHOWN OR THAT THE GIVEN LOCATIONS ARE EXACT. CONFIRMATION OF EXISTENCE AND EXACT LOCATION OF ALL SERVICES MUST BE OBTAINED FROM THE INDIVIDUAL UTILITIES BEFORE PROCEEDING WITH CONSTRUCTION.

METRIC
 WHOLE NUMBERS INDICATE MILLIMETRES
 DECIMALIZED NUMBERS INDICATE METRES

0	ISSUED FOR CONSTRUCTION	06/06/02	DID
A	ISSUED FOR CLIENT REVIEW	06/05/05	DID
NO.	REVISIONS	YYMMDD	BY

UMA | AECOM

© 2006 UMA ENGINEERING LTD. ALL RIGHTS RESERVED.

DESIGNED BY: WRJ
 CHECKED BY: ROB
 DRAWN BY: DID
 APPROVED BY: R.P. Bruce
 RELEASED FOR CONSTRUCTION
 DATE: JUL 12 2006

CONSULTANT DRAWING NO. 0265-379-00_01-CT1008_RX

THE CITY OF WINNIPEG
PUBLIC WORKS DEPARTMENT
ENGINEERING DIVISION

HELMSDALE/KIMBERLY W/E ALLEY
KILDONAN DR TO 300m EAST
NEW CONSTRUCTION

HORIZONTAL AND VERTICAL ALIGNMENT
 FROM STA 0+190 TO STA 0+310

CITY DRAWING NUMBER: N/A
 SHEET: 8 OF 14
 DRAWING No.: 08
 REV: 0