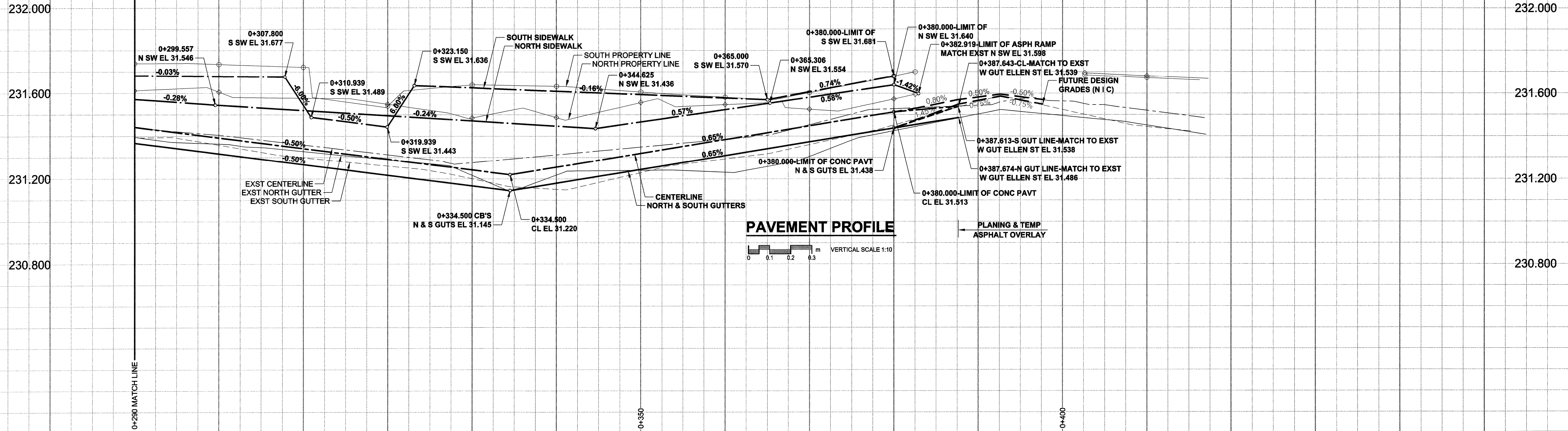


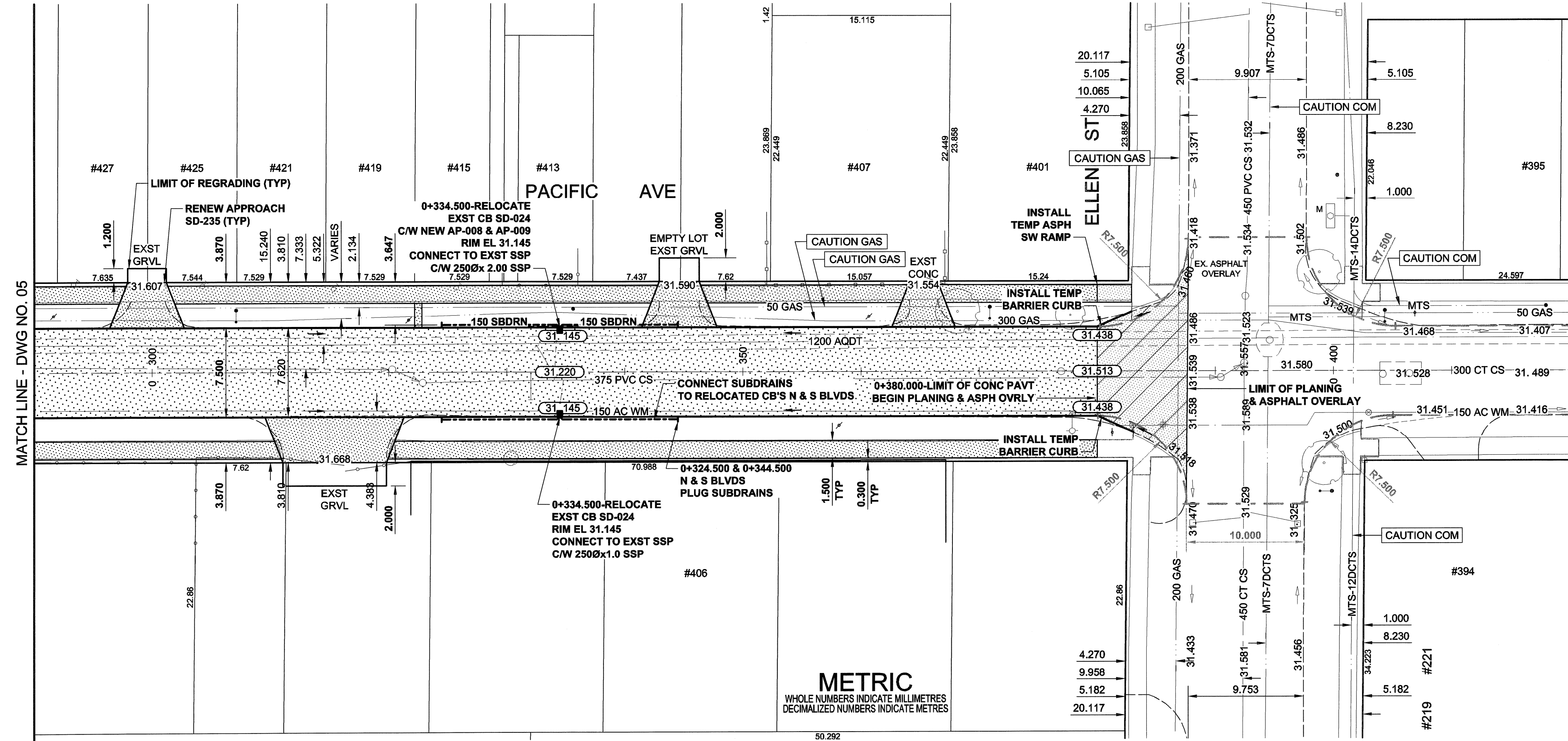
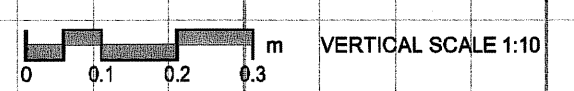
A1 SIZE 23.4" x 33.1" (594mm x 841mm)

PLOT: 5/31/2006 10:29:25 AM

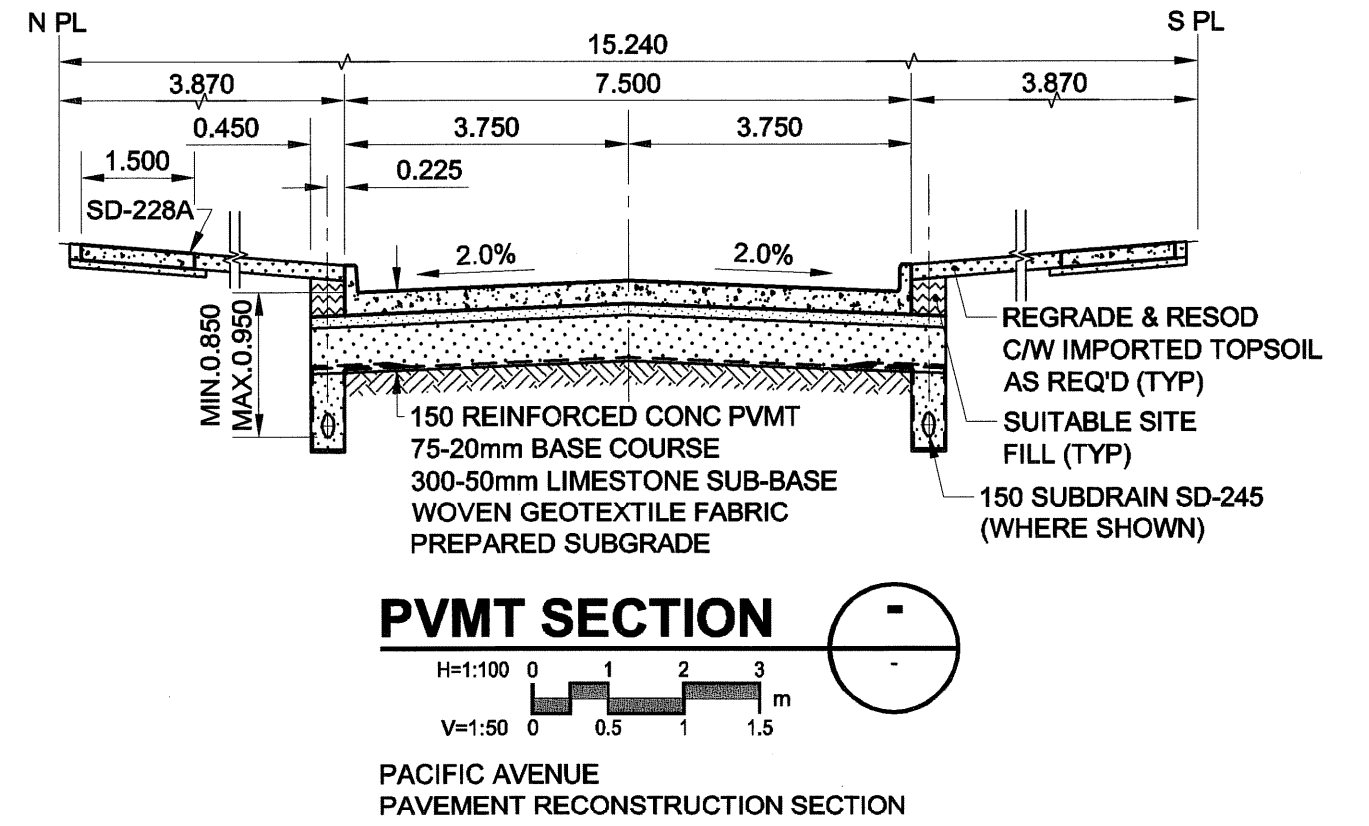
UMA FILE NAME: 0265-379-00_01-CT1006_RX.dwg Saved By: coopark



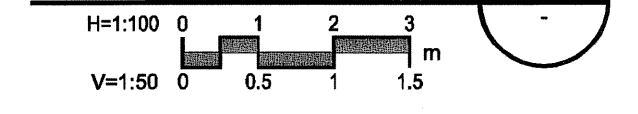
PAVEMENT PROFILE



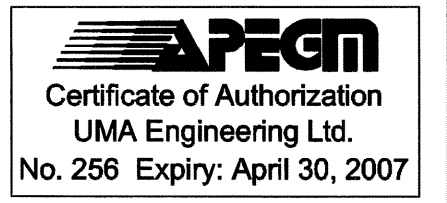
METRIC
WHOLE NUMBERS INDICATE MILLIMETRES
DECIMALIZED NUMBERS INDICATE METRES



PMT SECTION



- NOTES**
- ADJUST MH AND CB RIMS TO NEW GRADES.
 - CONTRACTOR TO EXERCISE CAUTION WHEN INSTALLING 150 SUBDRAIN TO PREVENT CROSSING CONFLICTS WITH EXST. GAS SERVICES.
 - LAMP STANDARDS, HYDRO POLES, AND ANCHORS MAY REQUIRE TEMPORARY SUPPORT/REMOVAL OR REPLACEMENT AT THE CONTRACTOR'S EXPENSE.
 - CONTRACTOR SHALL TAKE PRECAUTIONARY STEPS TO AVOID DAMAGE FROM CONSTRUCTION ACTIVITIES TO EXISTING BOULEVARD TREES WITHIN THE LIMITS OF CONSTRUCTION AS OUTLINED IN THE SPECIFICATIONS.
 - CONTRACTOR SHALL REGRADE EXST. PRIVATE SIDEWALKS. LIMITS TO BE DETERMINED.
 - THE LOCATION OF ALL SERVICES TO BE CONFIRMED IN THE FIELD BY THE CONTRACTOR.
 - ADD 200.000m TO ABBREVIATED ELEVATIONS TO OBTAIN GEODETIC ELEVATIONS.
 - SIDEWALK GRADES SHOWN AS NORTH SIDE NORTH SIDEWALK & SOUTH SIDE SOUTH SIDEWALK.
 - AQUEDUCT MANHOLE UM106-0064 TO BE INSTALLED UNDER THE SHOAL LAKE AQUEDUCT BRANCH 1 AQUEDUCT UNDERDRAIN. ACCESS MANHOLES, CLEANING & INSPECTION, MANHOLE INSTALLATION PROGRAM.
 - EXST 1200Ø AQUEDUCT TIMBER SHORING MAY STILL EXIST. REFER TO SPECIFICATIONS FOR REMOVAL AND PAYMENT CLAUSES. (TYP).



BID OPPORTUNITY NO. 299-2006

---	NATURAL GAS	○	MANHOLE	●	CONCRETE PAVEMENT	---	EXISTING
---	COMMUNICATION	□	CATCH BASIN / CATCH PIT	■	ASPHALT PAVEMENT	---	NEW
---	HYDRO	△	C & G INLET WITH BOX	■	CONC. SIDEWALK/MEDIAN	---	EXISTING
---	CATV	○	TREE	○	PAVING STONE	---	NEW
---	TRAFFIC SIGNALS	TH-12	TEST HOLE	○	TOPSOIL & SOD	---	EXISTING
---	LAND DRAINAGE SEWER	---	PROPERTY LINE	---	GRAVEL	---	NEW
---	SANITARY/COMBINED SEWER	---	SURVEY BAR	---	RAMP CURB	---	EXISTING
---	CATCHBASIN LEAD	---	FENCE	---	REMOVAL	---	NEW
---	WATERMAIN	---	BOC/EOPAVT	---	PLANING	---	EXISTING
---	SUBDRAIN	---	ELEVATION	---		---	NEW
---	DITCH	---		---		---	EXISTING
---	EXISTING	---	LEGEND - PLAN	---		---	NEW

LOCATION APPROVED
UNDERGROUND STRUCTURES

BM 34.043
ELEV 231.963m

DESIGNED BY RPB
CHECKED BY JGK
DRAWN BY DID
APPROVED BY [Signature]

DATE 08/05/05

NO. REVISIONS

0 ISSUED FOR CONSTRUCTION 06/06/02 KLC
A ISSUED FOR CLIENT REVIEW 06/05/05 DID
BY

UMA | AECOM

© 2006 UMA ENGINEERING LTD. ALL RIGHTS RESERVED.

DESIGNED BY RPB
CHECKED BY JGK
DRAWN BY DID
APPROVED BY [Signature]

DATE 08/05/05

PROFESSIONAL'S SEAL
PROVINCE OF MANITOBA
REGISTERED PROFESSIONAL ENGINEER
R. P. BRUCE

CONSULTANT DRAWING NO.
0265-379-00_01-CT1006_RX

THE CITY OF WINNIPEG
PUBLIC WORKS DEPARTMENT
ENGINEERING DIVISION

PACIFIC AVENUE
ISABEL ST TO ELLEN ST
RECONSTRUCTION

HORIZONTAL AND VERTICAL ALIGNMENT
FROM STA 0+290 TO ELLEN ST

CITY DRAWING NUMBER N/A
SHEET 6 OF 14
DRAWING No. 06
REV 0