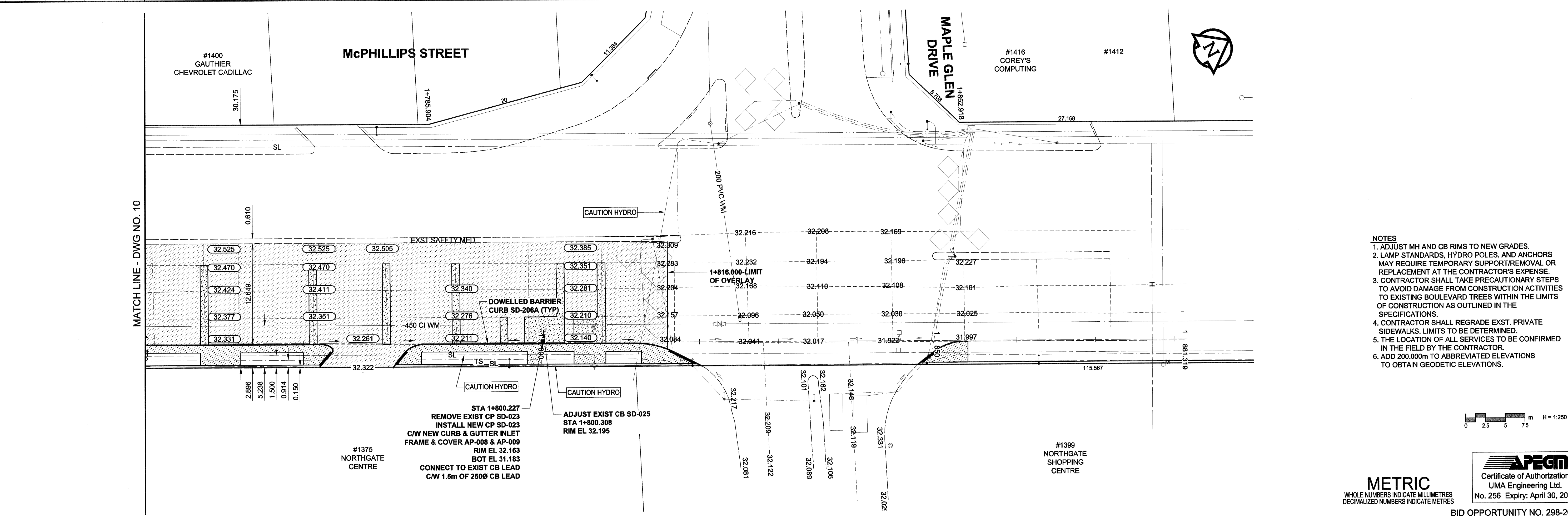
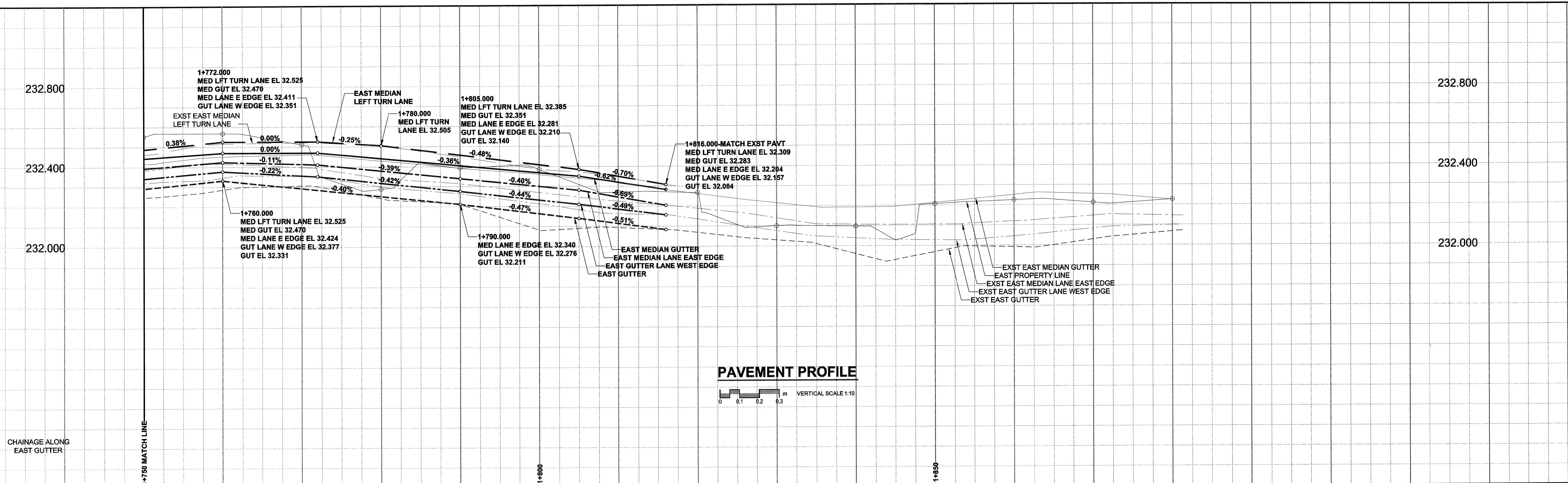


A1 SIZE 23.4" x 33.1" (594mm x 841mm)

PLOT: 06/06/20 12:06:11 PM

UMA FILE NAME: 0265-384-00\_01-CT1011\_RX.dwg Saved By: cdooszpod



- NOTES**
1. ADJUST MH AND CB RIMS TO NEW GRADES.
  2. LAMP STANDARDS, HYDRO POLES, AND ANCHORS MAY REQUIRE TEMPORARY SUPPORT/REMOVAL OR REPLACEMENT AT THE CONTRACTOR'S EXPENSE.
  3. CONTRACTOR SHALL TAKE PRECAUTIONARY STEPS TO AVOID DAMAGE FROM CONSTRUCTION ACTIVITIES TO EXISTING BOULEVARD TREES WITHIN THE LIMITS OF CONSTRUCTION AS OUTLINED IN THE SPECIFICATIONS.
  4. CONTRACTOR SHALL REGRADE EXST. PRIVATE SIDEWALKS. LIMITS TO BE DETERMINED.
  5. THE LOCATION OF ALL SERVICES TO BE CONFIRMED IN THE FIELD BY THE CONTRACTOR.
  6. ADD 200.000m TO ABBREVIATED ELEVATIONS TO OBTAIN GEODETIC ELEVATIONS.



**METRIC**  
WHOLE NUMBERS INDICATE MILLIMETRES  
DECIMALIZED NUMBERS INDICATE METRES

**AECOM**  
Certificate of Authorization  
UMA Engineering Ltd.  
No. 256 Expiry: April 30, 2007

BID OPPORTUNITY NO. 298-2006

<p>NATURAL GAS COMMUNICATION HYDRO CATV TRAFFIC SIGNALS LAND DRAINAGE SEWER SANITARY/COMBINED SEWER CATCHBASIN LEAD WATERMAIN SUBDRAIN DITCH</p>		<p>MANHOLE CATCH BASIN / CATCH PIT C &amp; G INLET WITH BOX TREE TEST HOLE PROPERTY LINE SURVEY BAR FENCE BOC/EOPAVT ELEVATION</p>		<p>CONCRETE PAVEMENT ASPHALT OVERLAY CONC. SIDEWALK/MEDIAN PAVING STONE GRAVEL CURB RAMP PLANING</p>		<p>LOCATION APPROVED UNDERGROUND STRUCTURES</p> <p>SUPR. U/G STRUCTURES DATE COMMITTEE</p> <p>NOTE: LOCATION OF UNDERGROUND STRUCTURES AS SHOWN ARE BASED ON THE BEST INFORMATION AVAILABLE. BUT NO GUARANTEE IS GIVEN THAT ALL EXISTING UTILITIES ARE SHOWN OR THAT THE GIVEN LOCATIONS ARE EXACT. CONFIRMATION OF EXISTENCE AND EXACT LOCATION OF ALL SERVICES MUST BE OBTAINED FROM THE INDIVIDUAL UTILITIES BEFORE PROCEEDING WITH CONSTRUCTION.</p>		<p>BM 24-036 ELEV 232.215m</p>		<p>UMA   AECOM</p> <p>©2006 UMA ENGINEERING LTD. ALL RIGHTS RESERVED.</p> <p>DESIGNED BY WRJ DRAWN BY DID, KLC HOR. SCALE 1:250 VERT. SCALE AS SHOWN</p>		<p>PROFESSIONAL'S SEAL</p> <p>PROVINCE OF MANITOBA REGISTERED PROFESSIONAL ENGINEER R.P. 106 BRUCE</p> <p>CONSULTANT DRAWING NO. 0265-384-00_01-CT1011_RX.dwg</p>		<p><b>THE CITY OF WINNIPEG</b> PUBLIC WORKS DEPARTMENT ENGINEERING DIVISION</p> <p>McPhillips Street Northbound College Avenue to Maple Glen Drive Street Renewal Horizontal and Vertical Alignment From Sta 1+750 to Maple Glen Drive</p>		<p>CITY DRAWING NUMBER P-3268-11</p> <p>SHEET 11 OF 11</p> <p>DRAWING No. REV 11 0</p>	
--	--	--	--	--	--	--	--	------------------------------------	--	--	--	---	--	--	--	--	--