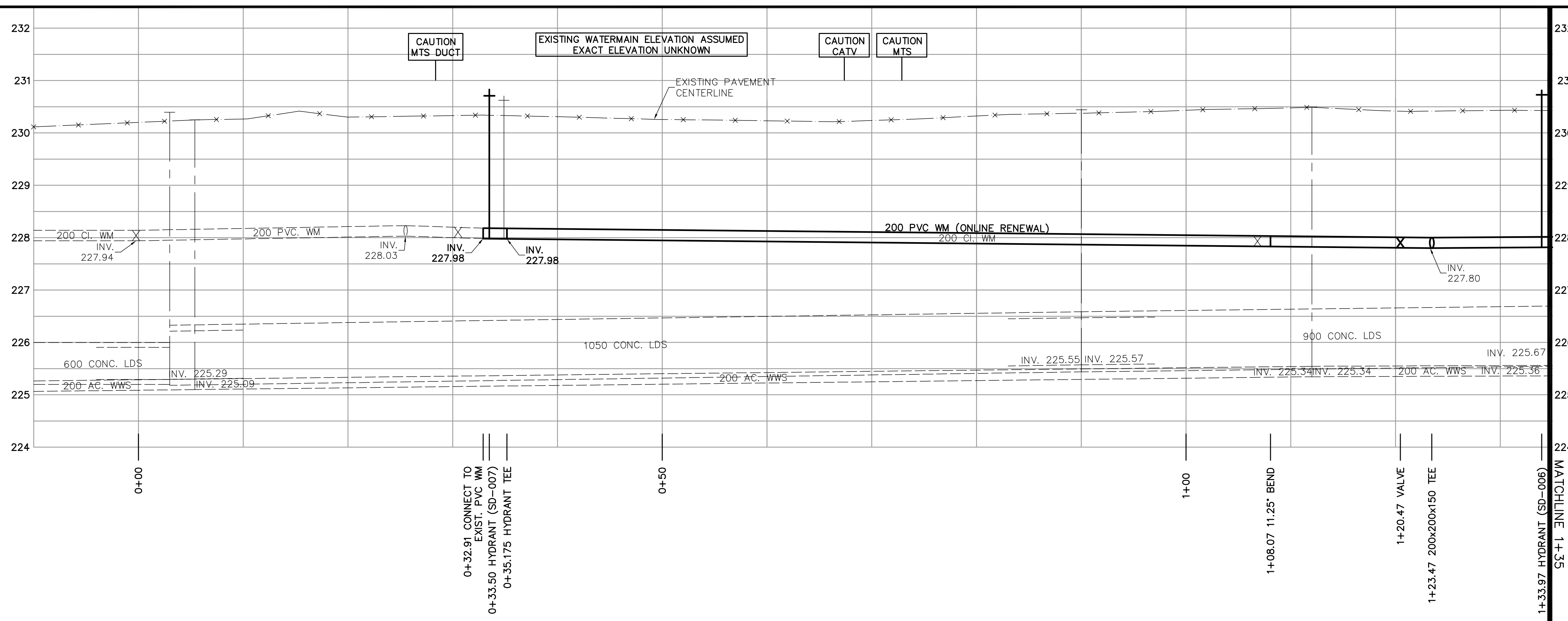
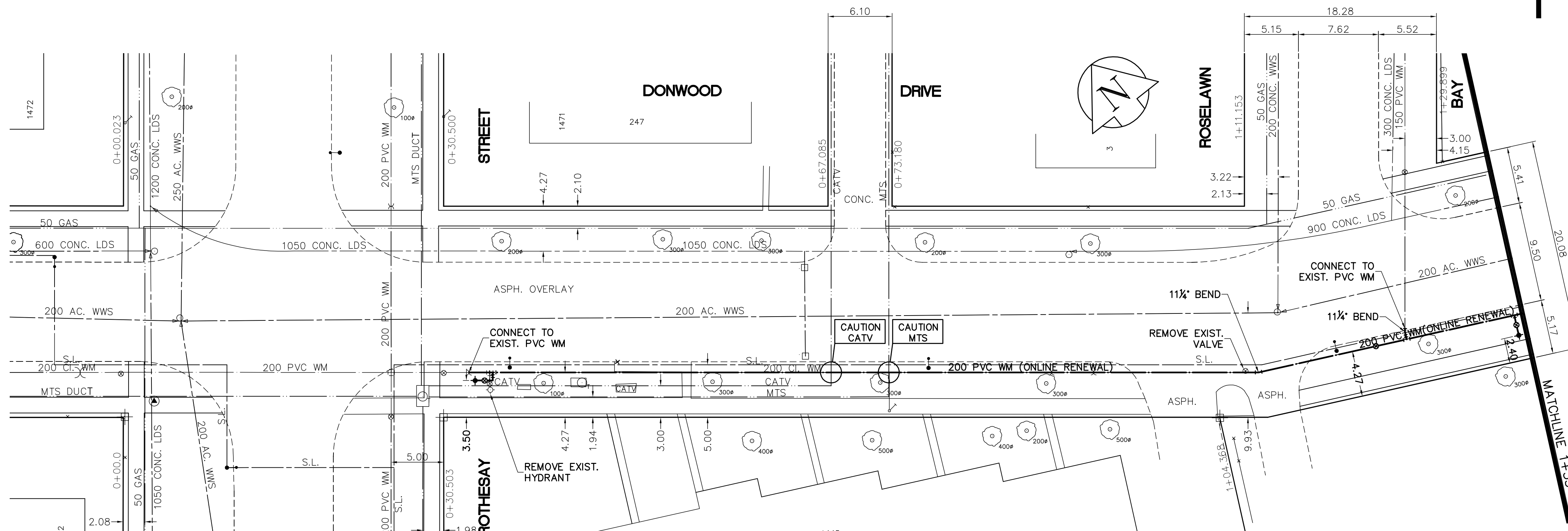


SHEET: COW-WM-A1 (11/2002) FILE NAME: L:\work\10000\102736\102736-00\Drawings\102736-007.dwg LAYOUT NAME: 92736-007 MAY 08, 2006 - 11:42am PLOTTED BY: michael.hebert@earthtech.ca

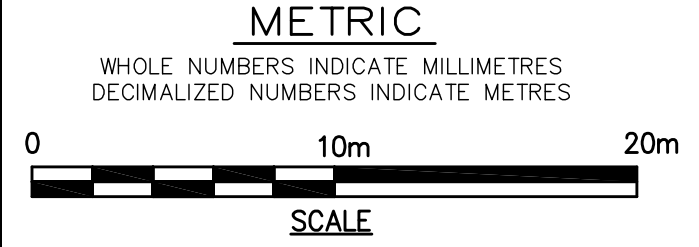


- CONSTRUCTION NOTES**
1. EXPOSE WATERMAIN CONNECTIONS AND CONFIRM INVERTS PRIOR TO CONSTRUCTION.
 2. INSTALL WATERMAIN BY TRENCHLESS METHODS.
 3. ALL MATERIALS SHALL CONFORM TO THE CITY OF WINNIPEG STANDARD CONSTRUCTION SPECIFICATIONS.
 4. MINIMUM COVER TO TOP OF PROPOSED WATERMAIN SHALL BE 2.5m FROM STREET CENTERLINE.
 5. INSTALL ALL HYDRANTS WITH FLANGE ELEVATION 50mm - 150mm ABOVE FINISHED GRADE.
 6. REPLACE ALL EXISTING LEAD SERVICES FROM THE PROPOSED WATERMAIN TO PROPERTY LINE.
 7. NOTIFY ALL AFFECTED RESIDENTS AND BUSINESSES 24 HOURS IN ADVANCE OF ANY WATER SHUTDOWN OR DISRUPTION OF SERVICE.
 8. LOCATION OF WATER SERVICES SHOWN ON DRAWINGS ARE APPROXIMATE. THE CONTRACTOR SHALL FIELD LOCATE ALL WATER SERVICES PRIOR TO CONSTRUCTION.
 9. ALL VALVES SHALL BE BLACK TOP (CLOCKWISE TO CLOSE).
 10. BACKFILL UNDER OR WITHIN 1.0m OF PAVEMENTS, INCLUDING SIDEWALKS SHALL BE CLASS 3 BACKFILL EXCEPT AS NOTED. BACKFILL IN BOULEVARDS SHALL BE CLASS 5 BACKFILL.



SEE DRAWING D-8990 FOR CONTINUATION

ADDRESS	NATURE OF SERVICE	SIZE	MATERIAL	DISTANCE SC TO PROPERTY	POSITION OF SC (curb stop)	POSITION OF CC (corp)	COMMENTS:
247 DONWOOD DR	RESIDENTIAL	19 mm	COPPER	0.3 m	Long: 3.0 m N of SL BLDG Short: 3.0 m N of SL BLDG	Long: 76.5 m S of SL Short: 76.5 m S of SL	DUPLEX WITH SINGLE SERVICE- WITH 223 DONWOOD
1472 ROTHESAY ST	RESIDENTIAL	19 mm	COPPER	0.3 m	Long: 0.6 m N of SL BLDG Short: 0.6 m N of SL BLDG	Long: 76.5 m S of SL Short: 76.5 m S of SL	DUPLEX-ONE SIDE IS 247 DONWOOD- OTHER SIDE IS 1471 ROTHESAY
1471 ROTHESAY ST	RESIDENTIAL	19 mm	COPPER	0.3 m	Long: 3.0 m N of SL BLDG Short: 3.0 m N of SL BLDG	Long: 76.5 m S of SL Short: 76.5 m S of SL	
1462 ROTHESAY ST	RESIDENTIAL	19 mm	COPPER	0.3 m	Long: 6.1 m N of SL BLDG Short: 6.1 m N of SL BLDG	Long: 76.5 m S of SL Short: 76.5 m S of SL	
1445 ROTHESAY ST	RESIDENTIAL	25 mm	COPPER	0.6 m	Long: 2.4 m E of WL BLDG (UNIT 14) Short: 2.4 m E of WL BLDG (UNIT 14)	Long: 76.5 m S of SL Short: 76.5 m S of SL	1989 - WM RENEWAL
3 ROSELAWN BY	RESIDENTIAL	19 mm	COPPER	0.3 m	Long: 5.5 m N of SL BLDG Short: 5.5 m N of SL BLDG	Long: 76.5 m S of SL Short: 76.5 m S of SL	



EXISTING	LEGEND - PLAN	PROPOSED	EXISTING	LEGEND - PROFILE	PROPOSED	EXISTING	LEGEND - PROFILE	PROPOSED
150 mm W.M.	WATERMAIN	150 mm W.M.	HYDRO TELEPHONE	150 mm W.M.	WATERMAIN	300mm L.D.S.	LAND DRAINAGE SEWER	300mm L.D.S.
300mm L.D.S.	LAND DRAINAGE SEWER	250mm W.W.S.	WASTE WATER SEWER	250mm W.W.S.	PROPERTY LINE	300mm L.D.S.	LAND DRAINAGE SEWER	300mm L.D.S.
250mm W.W.S.	WASTE WATER SEWER	MANHOLE	CATCH BASIN	CURB INLET	JUNCTIONS	CULVERT	GAS	
		CONCRETE SIDEWALK	FENCE					

LOCATION APPROVED UNDERGROUND STRUCTURES

SUPV. U/G STRUCTURES COMMITTEE DATE

NOTE:
LOCATION OF UNDERGROUND STRUCTURES AS SHOWN ARE BASED ON THE BEST INFORMATION AVAILABLE BUT NO GUARANTEE IS GIVEN THAT ALL EXISTING UTILITIES ARE SHOWN OR THAT THE GIVEN LOCATIONS ARE EXACT. CONFIRMATION OF EXISTENCE AND EXACT LOCATION OF ALL SERVICES MUST BE OBTAINED FROM THE INDIVIDUAL UTILITIES BEFORE PROCEEDING WITH CONSTRUCTION.

NO.	REVISIONS	DATE	BY
B	ISSUED FOR TENDER	08/05/2006	GSK
A	ISSUED FOR REVIEW	02/05/2006	GSK

EARTH TECH
A tyco INTERNATIONAL LTD. COMPANY
Earth Tech (Canada) Inc. Winnipeg, Manitoba 204.477.5381

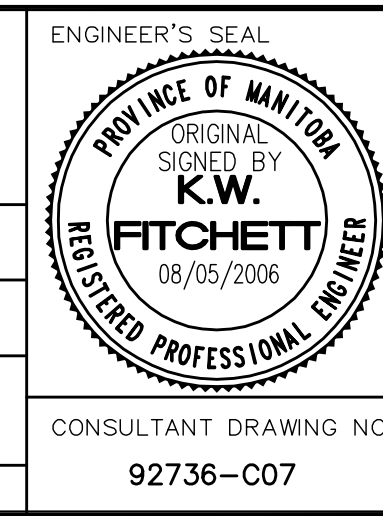
DESIGNED BY: GDL, GSK
CHECKED BY: GSK

DRAWN BY: MAF
APPROVED BY:

HOR. SCALE: 1:250
VERTICAL SCALE: 1:50

RELEASED FOR CONSTRUCTION BY: K. ZUREK

DATE: 2006/04/12
DATE: 2006/05/08



THE CITY OF WINNIPEG
Winnipeg WATER AND WASTE DEPARTMENT

2006 WATERMAIN RENEWALS CONTRACT 1

CONSULTANT DRAWING NO. 92736-C07

DONWOOD DRIVE
ROTHESAY STREET TO HONEYWOOD STREET
ROTHESAY STREET TO STA. 1+35

SHEET 8 OF 9
CITY DRAWING NUMBER D-8990