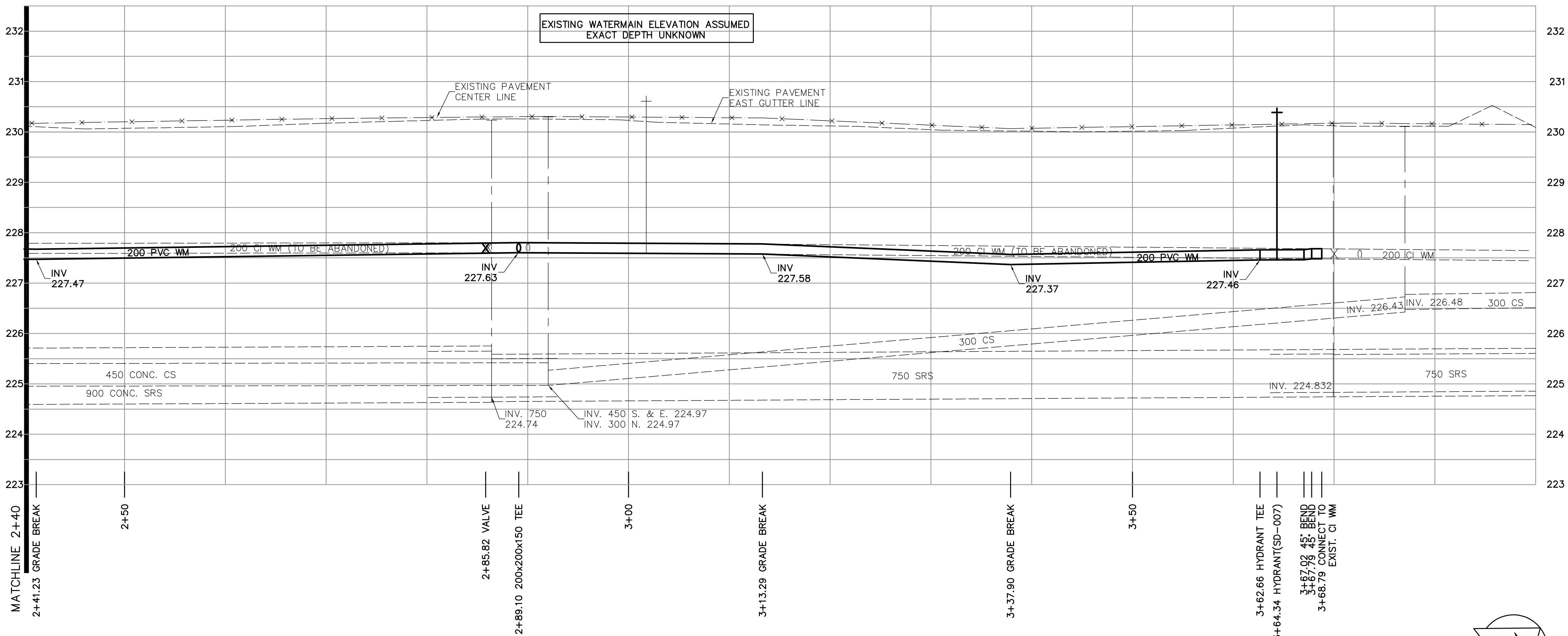
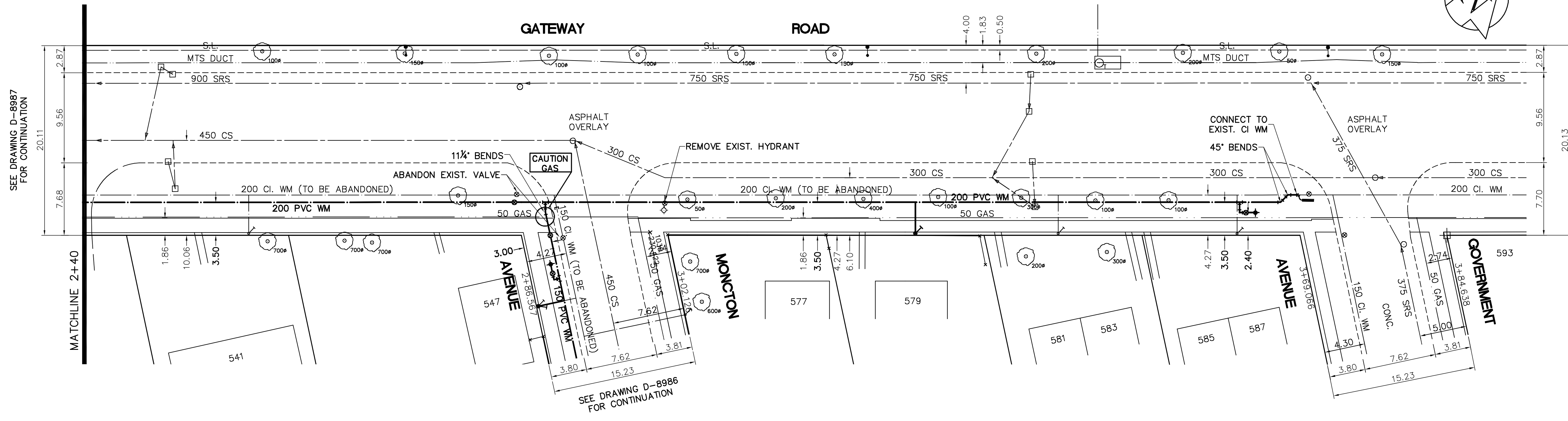


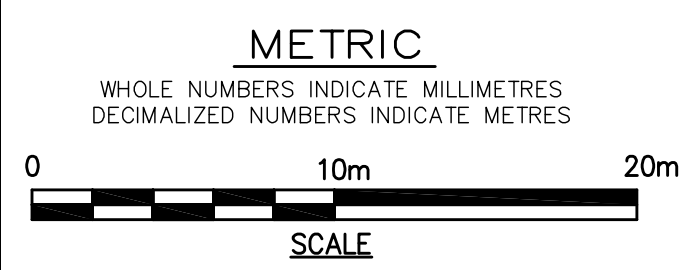
SHEET: COW-WM-A1 (11/2002)  
 FILE NAME: L:\Work\10000\102736\102736-CAD\Wm\Wm\A1\102736-C05.dwg  
 LAYOUT NAME: 92736-C05  
 PLOTTED BY: michael.henderson  
 May 08, 2006 - 11:41am



- CONSTRUCTION NOTES**
1. EXPOSE WATERMAIN CONNECTIONS AND CONFIRM INVERTS PRIOR TO CONSTRUCTION.
  2. INSTALL WATERMAIN BY TRENCHLESS METHODS.
  3. ALL MATERIALS SHALL CONFORM TO THE CITY OF WINNIPEG STANDARD CONSTRUCTION SPECIFICATIONS.
  4. MINIMUM COVER TO TOP OF PROPOSED WATERMAIN SHALL BE 2.5m FROM STREET CENTERLINE.
  5. INSTALL ALL HYDRANTS WITH FLANGE ELEVATION 50mm - 150mm ABOVE FINISHED GRADE.
  6. REPLACE ALL EXISTING LEAD SERVICES FROM THE PROPOSED WATERMAIN TO PROPERTY LINE.
  7. NOTIFY ALL AFFECTED RESIDENTS AND BUSINESSES 24 HOURS IN ADVANCE OF ANY WATER SHUTDOWN OR DISRUPTION OF SERVICE.
  8. LOCATION OF WATER SERVICES SHOWN ON DRAWINGS ARE APPROXIMATE. THE CONTRACTOR SHALL FIELD LOCATE ALL WATER SERVICES PRIOR TO CONSTRUCTION.
  9. ALL VALVES SHALL BE RED TOP (COUNTER CLOCKWISE TO CLOSE).
  10. BACKFILL UNDER OR WITHIN 1.0m OF PAVEMENTS, INCLUDING SIDEWALKS SHALL BE CLASS 3 BACKFILL EXCEPT AS NOTED. BACKFILL IN BOULEVARDS SHALL BE CLASS 5 BACKFILL.



  
**APEGM**  
 Certificate of Authorization  
 Earth Tech Canada Inc.  
 No. 730 Expiry: April 30, 2007



ADDRESS	NATURE OF SERVICE	SIZE	MATERIAL	DISTANCE SC TO PROPERTY	POSITION OF SC (curb stop)	POSITION OF CC (corp)	COMMENTS:
579 GATEWAY RD	RESIDENTIAL	13 mm	LEAD	0.3 m	Long: 3.4 m S of BLDG Short: of NL	Long: 17.1 m N of HYDRANT Short: of	RENEW TO PL
577 GATEWAY RD	RESIDENTIAL	13 mm	COPPER	0.0 m	Long: 3.6 m E of WL BLDG Short: of	Long: 10.5 m E of GATE VALVE Short: of	SERVICED OFF MONCTON
547 GATEWAY RD	RESIDENTIAL	13 mm	LEAD	0.2 m	Long: 3.7 m E of WL BLDG Short: of	Long: 6.9 m E of VALVE BOX Short: of	RENEW TO PL
541 GATEWAY RD	RESIDENTIAL	19 mm	COPPER	0.3 m	Long: 3.0 m S of NL BLDG Short: of	Short: of	SERVICED OFF MONCTON

ADDRESS	NATURE OF SERVICE	SIZE	MATERIAL	DISTANCE SC TO PROPERTY	POSITION OF SC (curb stop)	POSITION OF CC (corp)	COMMENTS:
587 GATEWAY RD	RESIDENTIAL	19 mm	COPPER	0.3 m	Long: 2.6 m S of NL BLDG Short: of	Long: 60.7 m N of HYDRANT Short: of	MULTIPLE METERING - 585 & 587 - BOTH IN 587 GATEWAY
585 GATEWAY RD	RESIDENTIAL	19 mm	COPPER	0.3 m	Long: 2.6 m S of NL BLDG Short: of	Long: 60.7 m N of HYDRANT Short: of	MULTIPLE METERING - 585 & 587 - BOTH IN 587 GATEWAY
583 GATEWAY RD	RESIDENTIAL	19 mm	COPPER	0.3 m	Long: 5.0 m N of SL BLDG Short: of	Long: 41.1 m N of HYDRANT Short: of	MULTIPLE METERING - 581 & 583 - BOTH IN 581 GATEWAY
581 GATEWAY RD	RESIDENTIAL	19 mm	COPPER	0.3 m	Long: 5.0 m N of SL BLDG Short: of	Long: 41.1 m N of HYDRANT Short: of	MULTIPLE METERING - 581 & 583 - BOTH IN 581 GATEWAY


EXISTING	LEGEND - PLAN	PROPOSED	EXISTING	LEGEND - PLAN	PROPOSED	EXISTING	LEGEND - PROFILE	PROPOSED
	WATERMAIN			HYDRANT			WATERMAIN	
	VALVE			HYDRANT			WATERMAIN	
	LAND DRAINAGE SEWER			WASTE WATER SEWER			WASTE WATER SEWER	
	MANHOLE			SURVEY BAR			SURVEY BAR	
	CATCH BASIN			CURB STOP			CURB STOP	
	CURB INLET			TREE			TREE	
	JUNCTIONS			ANODE			ANODE	
	CULVERT			CONCRETE SIDEWALK			CONCRETE SIDEWALK	
	GAS			FENCE			FENCE	


**LOCATION APPROVED UNDERGROUND STRUCTURES**  
 SUPV. U/G STRUCTURES COMMITTEE DATE \_\_\_\_\_  
**NOTE:**  
 LOCATION OF UNDERGROUND STRUCTURES AS SHOWN ARE BASED ON THE BEST INFORMATION AVAILABLE. BUT NO GUARANTEE IS GIVEN THAT ALL EXISTING UTILITIES ARE SHOWN OR THAT THE GIVEN LOCATIONS ARE EXACT. CONFIRMATION OF EXISTENCE AND EXACT LOCATION OF ALL SERVICES MUST BE OBTAINED FROM THE INDIVIDUAL UTILITIES BEFORE PROCEEDING WITH CONSTRUCTION.

B.M. 27-015 N.W. Cor. Raleigh St. and Neil Ave., 10ft. on top of 0.00m dia. x 2.4m iron pipe, 4m N. of S. wall of No. 615/621 Gateway Rd. and 35m W. of W. rail of railway tracks on C.P.R. (Loc. by Signal Subst. R.O.W.)  
 ELEV. 230.527

DESIGNED BY	GDL, GSK	CHECKED BY	GSK
DRAWN BY	MAF	APPROVED BY	
ISSUED FOR TENDER	08/05/2006	ISSUED FOR REVIEW	02/05/2006
NO. REVISIONS		DATE	

HOR. SCALE: 1:250  
 VERTICAL SCALE: 1:50  
 RELEASED FOR CONSTRUCTION BY: K. ZUREK  
 DATE: 2006/04/12  
 DATE: 2006/05/08

ENGINEER'S SEAL  
  
 CONSULTANT DRAWING NO. 92736-C05

  
**THE CITY OF WINNIPEG**  
 Winnipeg WATER AND WASTE DEPARTMENT  
**2006 WATERMAIN RENEWALS CONTRACT 1**  
 GATEWAY ROAD  
 LINDHURST AVE. TO GOVERNMENT AVE.  
 STA. 2+40 TO GOVERNMENT AVE.

SHEET OF 6 9  
 CITY DRAWING NUMBER D-8988