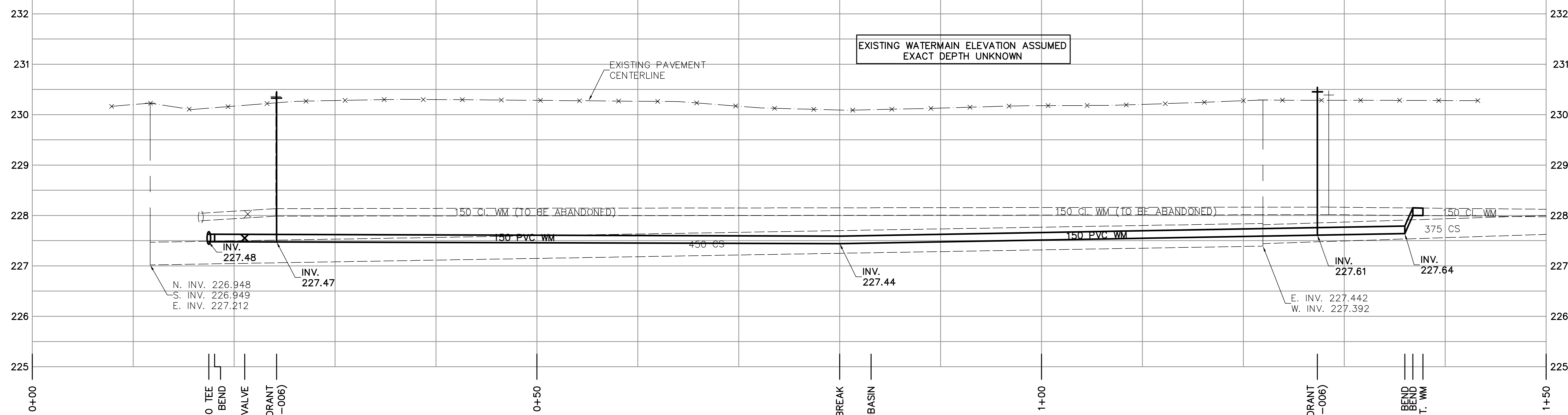
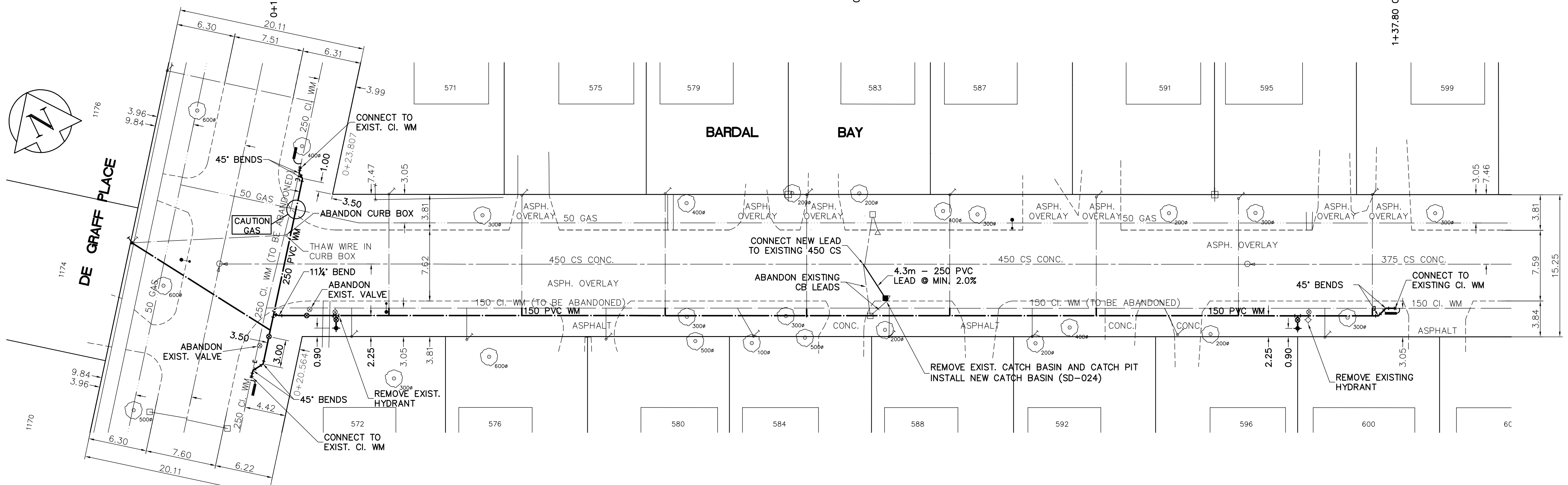


SHEET: COW-WM-01 (11/2002) FILE NAME: L:\work\10000\102736\102736-CAD\Wm\Wm\102736-C01.dwg PLOTTED BY: michael.hewson DATE: 2006/05/08 11:30am

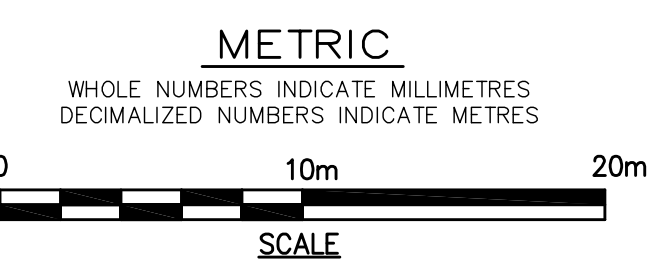


- CONSTRUCTION NOTES**
1. EXPOSE WATERMAIN CONNECTIONS AND CONFIRM INVERTS PRIOR TO CONSTRUCTION.
 2. INSTALL WATERMAIN BY TRENCHLESS METHODS.
 3. ALL MATERIALS SHALL CONFORM TO THE CITY OF WINNIPEG STANDARD CONSTRUCTION SPECIFICATIONS.
 4. MINIMUM COVER TO TOP OF PROPOSED WATERMAIN SHALL BE 2.5m FROM STREET CENTERLINE.
 5. INSTALL ALL HYDRANTS WITH FLANGE ELEVATION 50mm - 150mm ABOVE FINISHED GRADE.
 6. REPLACE ALL EXISTING LEAD SERVICES FROM THE PROPOSED WATERMAIN TO PROPERTY LINE.
 7. NOTIFY ALL AFFECTED RESIDENTS AND BUSINESSES 24 HOURS IN ADVANCE OF ANY WATER SHUTDOWN OR DISRUPTION OF SERVICE.
 8. LOCATION OF WATER SERVICES SHOWN ON DRAWINGS ARE APPROXIMATE. THE CONTRACTOR SHALL FIELD LOCATE ALL WATER SERVICES PRIOR TO CONSTRUCTION.
 9. ALL VALVES SHALL BE RED TOP (COUNTER CLOCKWISE TO CLOSE).
 10. BACKFILL UNDER OR WITHIN 1.0m OF PAVEMENTS, INCLUDING SIDEWALKS SHALL BE CLASS 3 BACKFILL EXCEPT AS NOTED. BACKFILL IN BOULEVARDS SHALL BE CLASS 5 BACKFILL.



ADDRESS	NATURE OF SERVICE	SIZE	MATERIAL	DISTANCE SC TO PROPERTY	POSITION OF SC (curb stop)	POSITION OF CC (corp)	COMMENTS:
1176 DE GRAFF PL	RESIDENTIAL	19 mm	COPPER	0.3 m	Long: 1.8 m S of NL BLDG Short: 2.3 m S of NL BLDG		THAW WIRE S/C BOX AT MAIN RENEW TO PROPERTY
1174 DE GRAFF PL	RESIDENTIAL	19 mm	COPPER	0.3 m	Long: 2.7 m S of NL BLDG Short: 4.0 m W of WL BLDG		
1170 DE GRAFF PL	RESIDENTIAL	19 mm	COPPER	0.3 m	Long: 4.0 m W of WL BLDG Short: 4.0 m W of WL BLDG		FEB/01 RENEWED SERVICE BOX
600 BARDAL BY	RESIDENTIAL	19 mm	COPPER	0.3 m	Long: 3.7 m W of WL BLDG Short: 0.9 m W of WL BLDG	4.9 m W of WL BLDG	
599 BARDAL BY	RESIDENTIAL	19 mm	COPPER	0.3 m	Long: 3.0 m W of WL BLDG Short: 3.0 m W of WL BLDG		
596 BARDAL BY	RESIDENTIAL	19 mm	COPPER	0.3 m	Long: 3.3 m W of WL BLDG Short: 0.9 m W of WL BLDG		
595 BARDAL BY	RESIDENTIAL	19 mm	COPPER	0.3 m	Long: 3.3 m W of WL BLDG Short: 0.9 m W of WL BLDG		
592 BARDAL BY	RESIDENTIAL	19 mm	COPPER	0.3 m	Long: 3.3 m W of WL BLDG Short: 0.9 m W of WL BLDG		
591 BARDAL BY	RESIDENTIAL	19 mm	COPPER	0.3 m	Long: 3.3 m W of WL BLDG Short: 0.9 m W of WL BLDG		
588 BARDAL BY	RESIDENTIAL	19 mm	COPPER	0.3 m	Long: 3.3 m W of WL BLDG Short: 0.9 m W of WL BLDG		

ADDRESS	NATURE OF SERVICE	SIZE	MATERIAL	DISTANCE SC TO PROPERTY	POSITION OF SC (curb stop)	POSITION OF CC (corp)	COMMENTS:
587 BARDAL BY	RESIDENTIAL	19 mm	COPPER	0.3 m	Long: 0.7 m W of WL BLDG Short: 1.1 m E of WL BLDG	0.5 m W of WL BLDG	
584 BARDAL BY	RESIDENTIAL	19 mm	COPPER	0.3 m	Long: 3.9 m W of WL BLDG Short: 4.1 m W of WL BLDG		
583 BARDAL BY	RESIDENTIAL	19 mm	COPPER	0.3 m	Long: 4.1 m W of WL BLDG Short: 2.8 m W of WL BLDG		
580 BARDAL BY	RESIDENTIAL	19 mm	COPPER	0.3 m	Long: 0.8 m E of WL BLDG Short: 0.5 m E of WL BLDG		
579 BARDAL BY	RESIDENTIAL	19 mm	COPPER	0.3 m	Long: 0.5 m E of WL BLDG Short: 3.0 m E of WL BLDG		
576 BARDAL BY	RESIDENTIAL	19 mm	COPPER	0.3 m	Long: 3.9 m W of WL BLDG Short: 3.9 m W of WL BLDG		
572 BARDAL BY	RESIDENTIAL	19 mm	COPPER	0.3 m	Long: 3.9 m W of WL BLDG Short: 3.9 m W of WL BLDG		
575 BARDAL BY	RESIDENTIAL	19 mm	COPPER	0.3 m	Long: 3.9 m W of WL BLDG Short: 3.9 m W of WL BLDG		



EXISTING	LEGEND - PLAN	PROPOSED	EXISTING	LEGEND - PROFILE	PROPOSED
150 mm W.M.	WATERMAIN	150 mm W.M.	Hydro	TELEPHONE	Hydro
Hydrant	HYDRANT	Valve	CONCRETE	CONCRETE	CONCRETE
Valve	VALVE	ASPHALT	ASPHALT	ASPHALT	ASPHALT
300mm L.D.S.	LAND DRAINAGE SEWER	300mm L.D.S.	PROPERTY LINE	PROPERTY LINE	PROPERTY LINE
250mm W.W.S.	WASTEWATER SEWER	250mm W.W.S.	SURVEY BAR	SURVEY BAR	SURVEY BAR
Manhole	MANHOLE	Tree	CURB STOP	CURB STOP	CURB STOP
Catch Basin	CATCH BASIN	Concrete Sidewalk	ANODE	ANODE	ANODE
Curb Inlet	CURB INLET	Fence			
Junctions	JUNCTIONS				
Culvert	CULVERT				
Gas	GAS				

LOCATION APPROVED UNDERGROUND STRUCTURES

SUPV. U/G STRUCTURES COMMITTEE DATE

NOTE:
LOCATION OF UNDERGROUND STRUCTURES AS SHOWN ARE BASED ON THE BEST INFORMATION AVAILABLE. BUT NO GUARANTEE IS GIVEN THAT ALL EXISTING UTILITIES ARE SHOWN OR THAT THE GIVEN LOCATIONS ARE EXACT. CONFIRMATION OF EXISTENCE AND EXACT LOCATION OF ALL SERVICES MUST BE OBTAINED FROM THE INDIVIDUAL UTILITIES BEFORE PROCEEDING WITH CONSTRUCTION.

EARTH TECH
tyco INTERNATIONAL LTD. COMPANY
Earth Tech (Canada) Inc. Winnipeg, Manitoba 204.477.5381

DESIGNED BY: GDL, GSK
CHECKED BY: GSK

DRAWN BY: MAF
APPROVED BY:

HOR. SCALE: 1:250
VERTICAL SCALE: 1:50

ISSUED FOR TENDER: 08/05/2006 GSK
ISSUED FOR REVIEW: 02/05/2006 GSK

NO. REVISIONS DATE BY

2006/04/12
2006/05/08

ENGINEER'S SEAL
PROVINCE OF MANITOBA
ORIGINAL SIGNED BY
K.W. FITCHETT
REGISTERED PROFESSIONAL ENGINEER
08/05/2006

THE CITY OF WINNIPEG
Winnipeg WATER AND WASTE DEPARTMENT

2006 WATERMAIN RENEWALS CONTRACT NAME

BARDAL BAY
DE GRAFF PLACE
TO 137m E. of DE GRAFF PLACE

SHEET OF
2 OF 9
CITY DRAWING NUMBER
D-8984

CONSULTANT DRAWING NO.
92736-C01

RELEASED FOR CONSTRUCTION BY:
K. ZUREK
DATE: 2006/05/08