

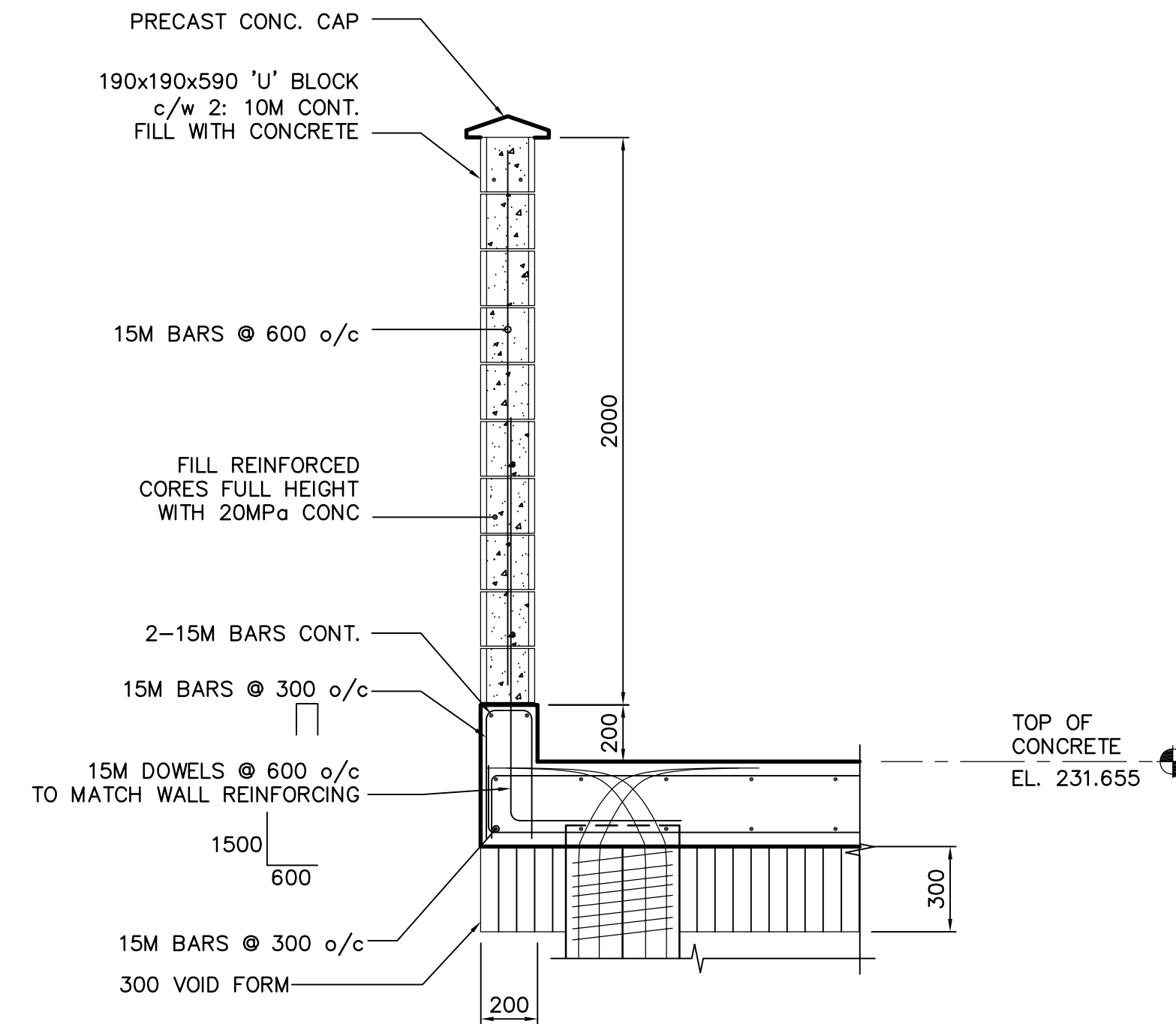
HOUSEKEEPING PADS, REFER TO ELECTRICAL DWG'S FOR SIZES & LOCATIONS. REFER TO STANDARD DETAILS.

**FOUNDATION PLAN**

SCALE : 1:40

**DESIGN LOADS: (UNFACTORED)**

DEAD LOADS:		LIVE LOADS:	
1. SLAB SELF WEIGHT		1. SNOW = 1.6KPa	
2. TRANSFORMER = 14.6 KPa		2. WIND = 0.42KPa	



**SECTION 1**  
SCALE 1:20

MARK	DIAMETER	CUT-OFF	REMARKS
P-1	300	231.430	PRECAST PILE PROJECTED INTO SLAB 75mm PRE-BORE 10M

MARK	DEPTH	REINFORCING			REMARKS
		TOP	BOTTOM	ADDITIONAL	
SL-1	300	15M @ 300 o/c E.W.	15M @ 300 o/c E.W.		

MARK	SIZE	REINFORCING	TYPE	REMARKS
MW-1	190	15M VERT. @ 600 o/c	CONCRETE	FILL REINFORCED CORES WITH 20MPa CONCRETE

**NOTE:**  
PAD SIZE TO BE CONFIRMED AFTER SELECTION OF TRANSFORMERS

<p>Certificate of Authorization Earth Tech Canada Inc. No. 730 Expiry: April 30, 2007</p>	B.M. ELEV.	<p>A Tyco International Ltd. Company</p>	ENGINEER'S SEAL	<p>THE CITY OF WINNIPEG WATER AND WASTE DEPARTMENT ENGINEERING DIVISION</p>	
	DESIGNED BY: DWS/GGP		CHECKED BY: LLR		ORIGINAL SIGNED BY: L.L. RIDING
	DRAWN BY: WDB		APPROVED BY: JEH		2006/05/15
	SCALE: AS NOTED		RELEASED FOR CONSTRUCTION BY: K. MARTENS		CONSULTANT DRAWING NO. S7.01
00 ISSUED FOR TENDER	06/05/15 WDB	DATE: 2006/05/03	DATE: 2006/05/15	<p>NEWPCC CENTRATE NUTRIENT TREATMENT NITROGEN REMOVAL FACILITY</p> <p>STRUCTURAL TRANSFORMER FOUNDATION PLAN, SCHEDULES &amp; SECTION</p>	
NO. REVISIONS	DATE BY	DATE	DATE	<p>CITY FILE NUMBER</p> <p>SHEET OF</p> <p>CITY DRAWING NUMBER</p>	