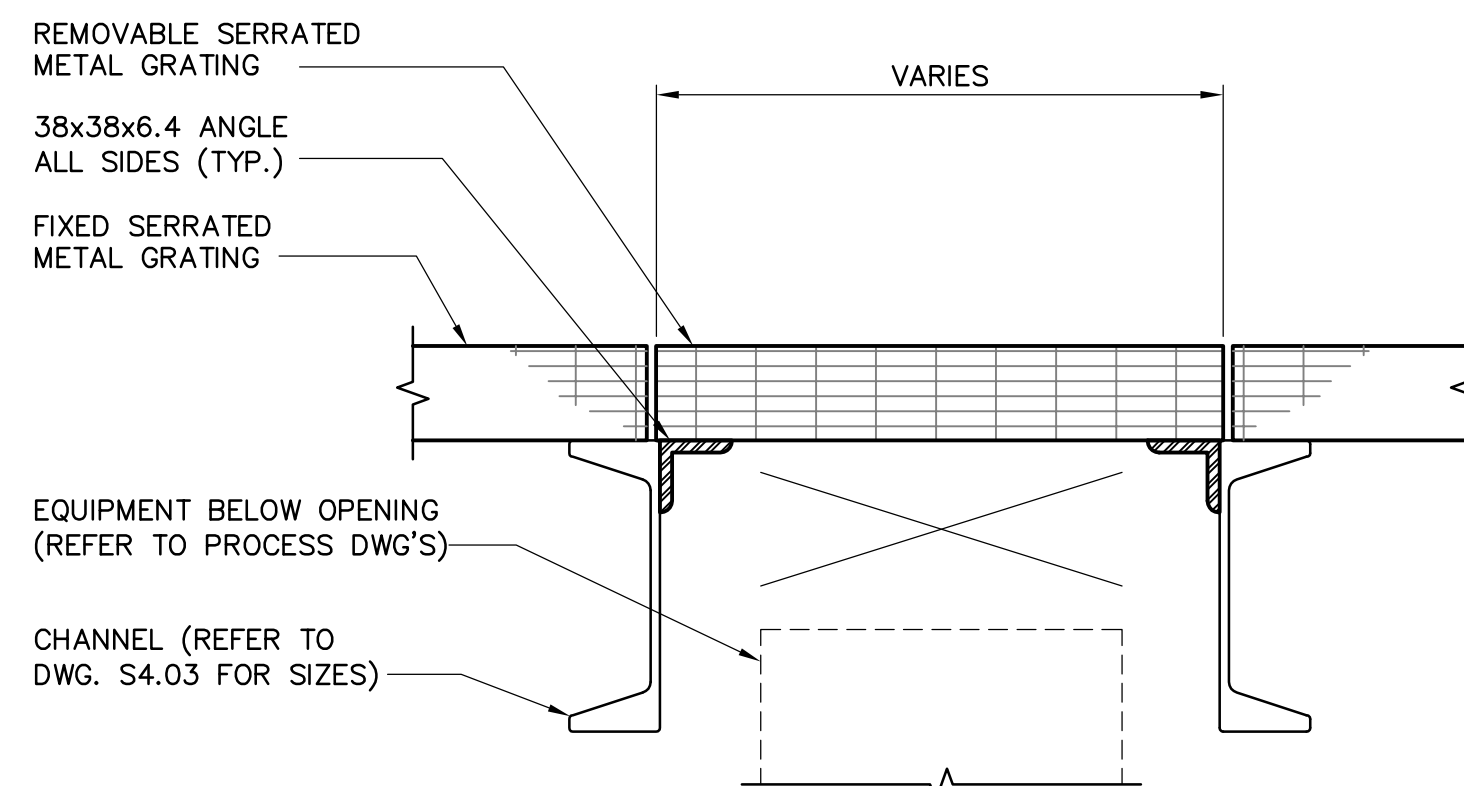


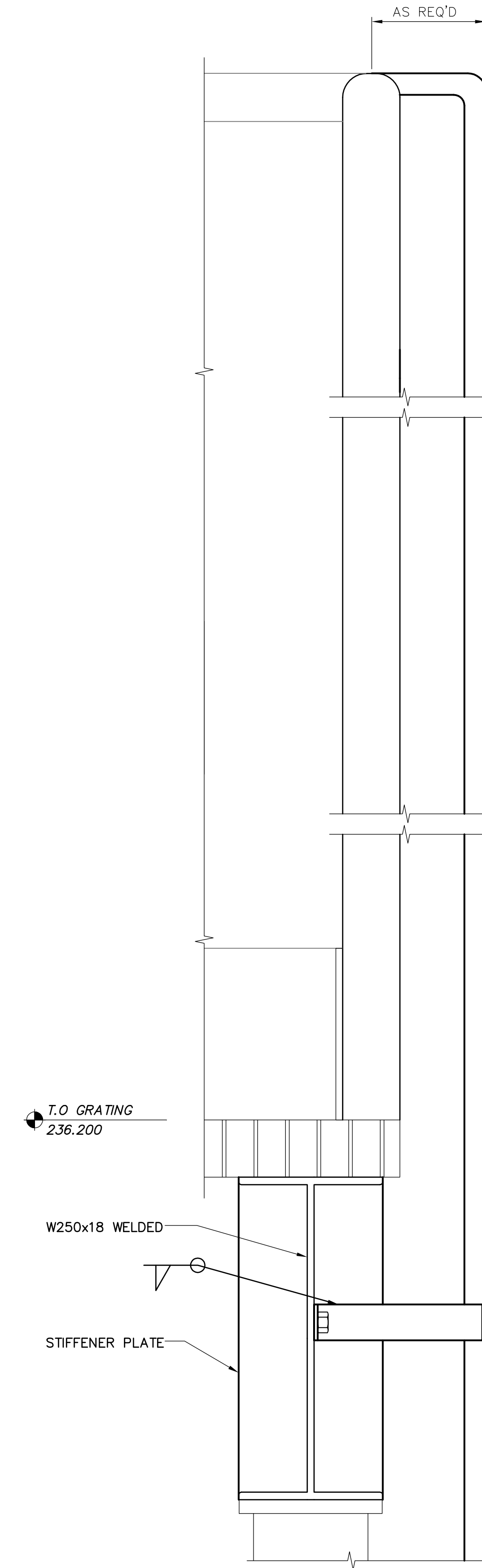
SERVICE PLATFORM RAILING PLAN

SCALE : 1:50

NOTE:
ALL STEEL HOT DIPPED GALVANIZED

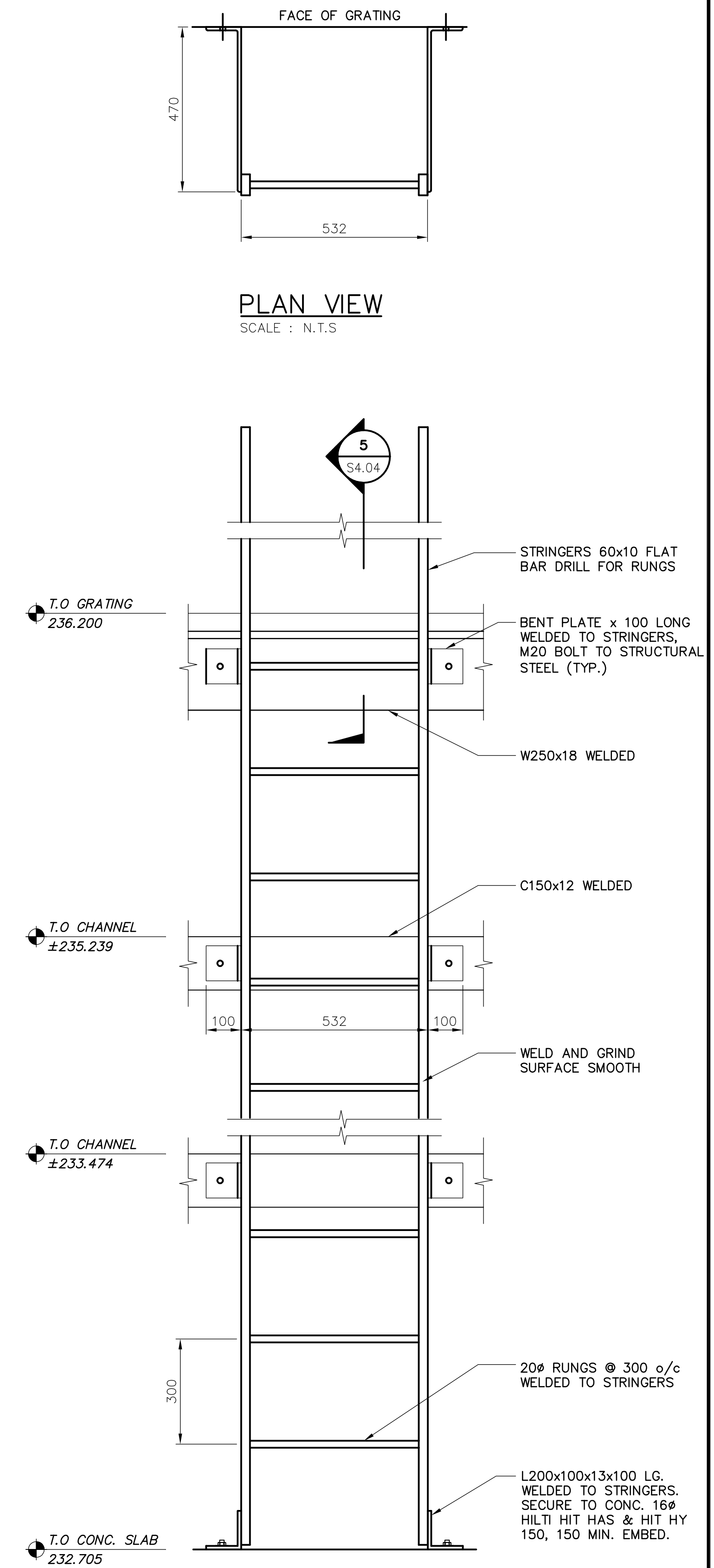


6 TYP. SECTION THRU REMOVABLE GRATING
S4.04 SCALE N.T.S.



5 LADDER DETAIL
S4.04 SCALE N.T.S.

NOTE:
LADDER TO BE GALVANIZED FINISH



A LADDER ELEVATION
S4.04 SCALE N.T.S.

APEGM
Certificate of Authorization
Earth Tech Canada Inc.
No. 730 Expiry: April 30, 2007

B.M. ELEV.			
00	ISSUED FOR TENDER	06/05/15	CMF
NO.	REVISIONS	DATE	BY

EarthTech
A Tyco International Ltd. Company

DESIGNED BY	DWS/GGP	CHECKED BY	LLR
DRAWN BY	CMF	APPROVED BY	JEH
SCALE:	AS NOTED	RELEASED FOR CONSTRUCTION BY:	K. MARTENS
DATE	2006/04/03	DATE	2006/05/15

ENGINEER'S SEAL
ORIGINAL SIGNED BY
L.L. RIDING
2006/05/15
CONSULTANT DRAWING NO.
S4.04

THE CITY OF WINNIPEG
WATER AND WASTE DEPARTMENT
ENGINEERING DIVISION

NEWPCC CENTRATE NUTRIENT TREATMENT NITROGEN REMOVAL FACILITY

STRUCTURAL METHANOL FACILITY SERVICE PLATFORM RAILING PLAN, DETAILS & SECTION

CITY FILE NUMBER	
SHEET OF	
CITY DRAWING NUMBER	