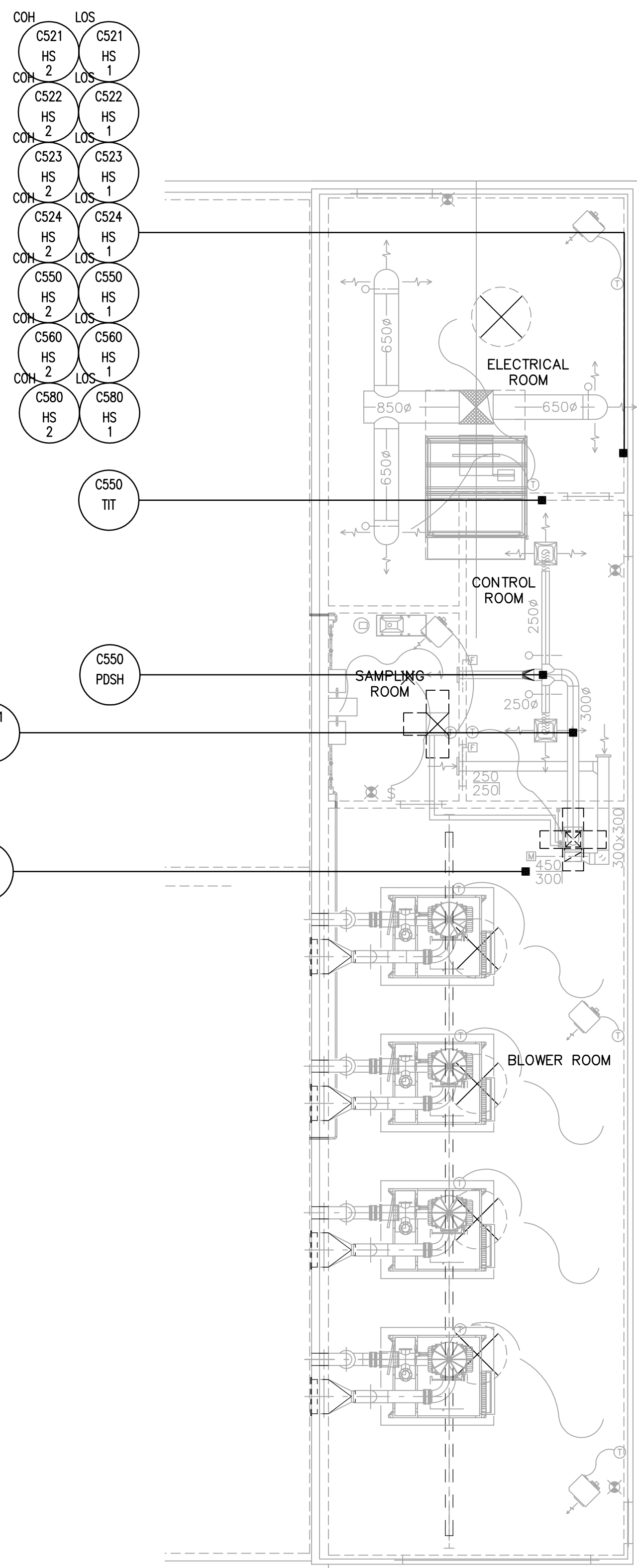
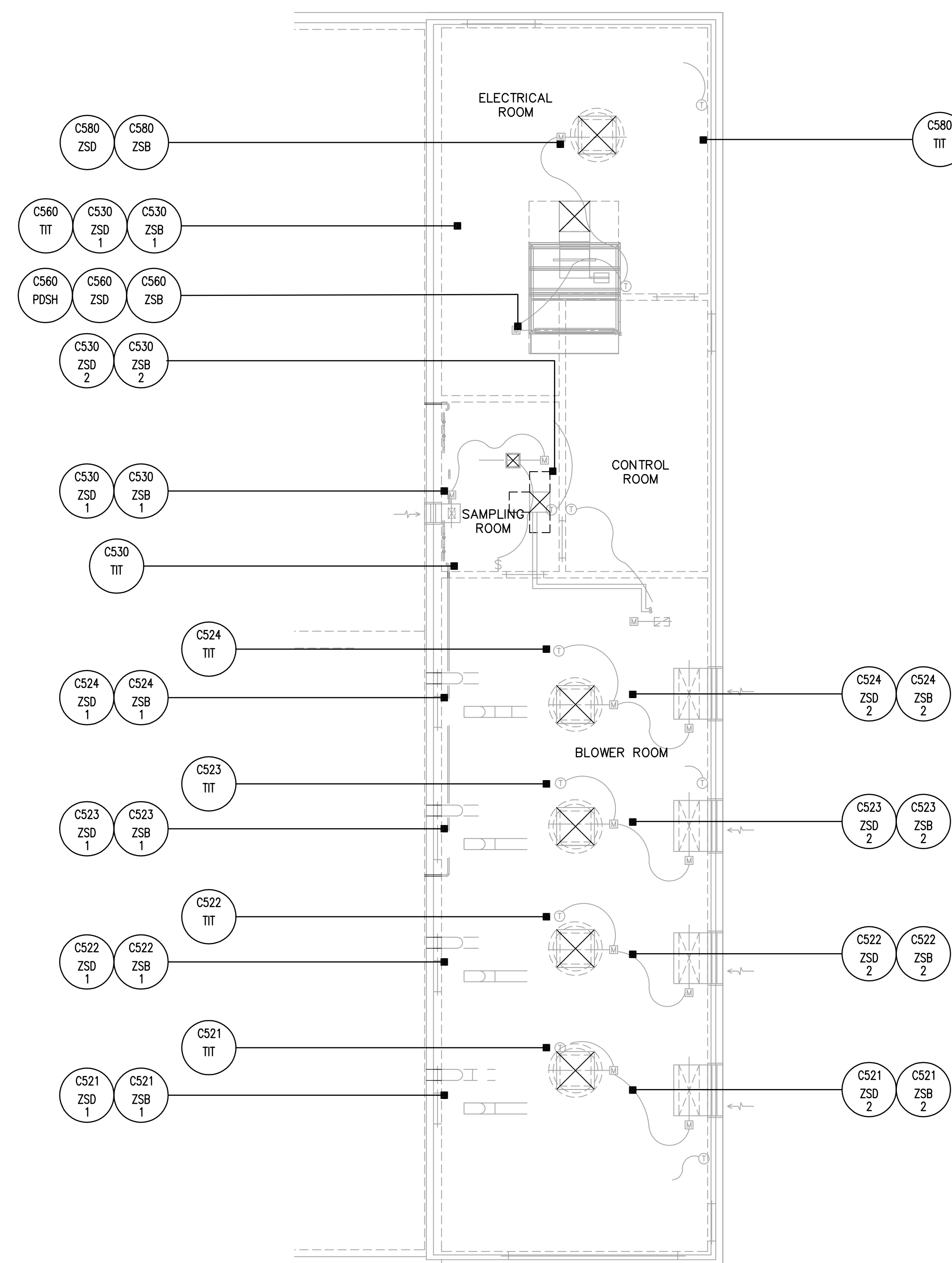


**1** EXHAUST FAN ROOM – HVAC PLAN  
11.03 SCALE 1:100



**2** BLOWER BUILDING – LOWER LEVEL HVAC PLAN  
11.03 SCALE 1:100



**3** BLOWER BUILDING – UPPER LEVEL HVAC PLAN  
11.03 SCALE 1:100

NOTES:

- FOR ALL INSTRUMENTS SHOWN ON THIS DRAWING, REFER TO DIVISION 15 FOR INSTRUMENTATION AND I/O REQUIREMENTS.
- REFER TO MECHANICAL DRAWING M1.02 FOR EXACT LOCATIONS OF ALL ELECTRICAL AND INSTRUMENTATION EQUIPMENT.
- INSTRUMENT LOCATIONS ARE INTENDED TO BE FOR ESTIMATING PURPOSES ONLY. EXACT LOCATIONS WILL BE DETERMINED ON-SITE DURING CONSTRUCTION.

 Certificate of Authorization Earth Tech Canada Inc. No. 730 Expiry: April 30, 2007	B.M. ELEV.	 A Tyco International Ltd. Company	ENGINEER'S SEAL	 THE CITY OF WINNIPEG WATER AND WASTE DEPARTMENT ENGINEERING DIVISION		
			DESIGNED BY: CD		CHECKED BY: BL	ORIGINAL SIGNED BY: P. STRYK
			DRAWN BY: SRP		APPROVED BY: JEH	2006/05/15
			SCALE: AS NOTED		RELEASED FOR CONSTRUCTION BY: K. MARTENS	CONSULTANT DRAWING NO. 11.03
	00 ISSUED FOR TENDER 06/05/15 CD	DATE: 2006/04/17	DATE: 2006/05/23	NEWPCC CENTRATE NUTRIENT TREATMENT NITROGEN REMOVAL FACILITY INSTRUMENTATION BLOWER BUILDING & EXHAUST FAN ROOM HVAC INSTALLATION PLANS		
	NO. REVISIONS	DATE	DATE	CITY FILE NUMBER SHEET 1 OF CITY DRAWING NUMBER		