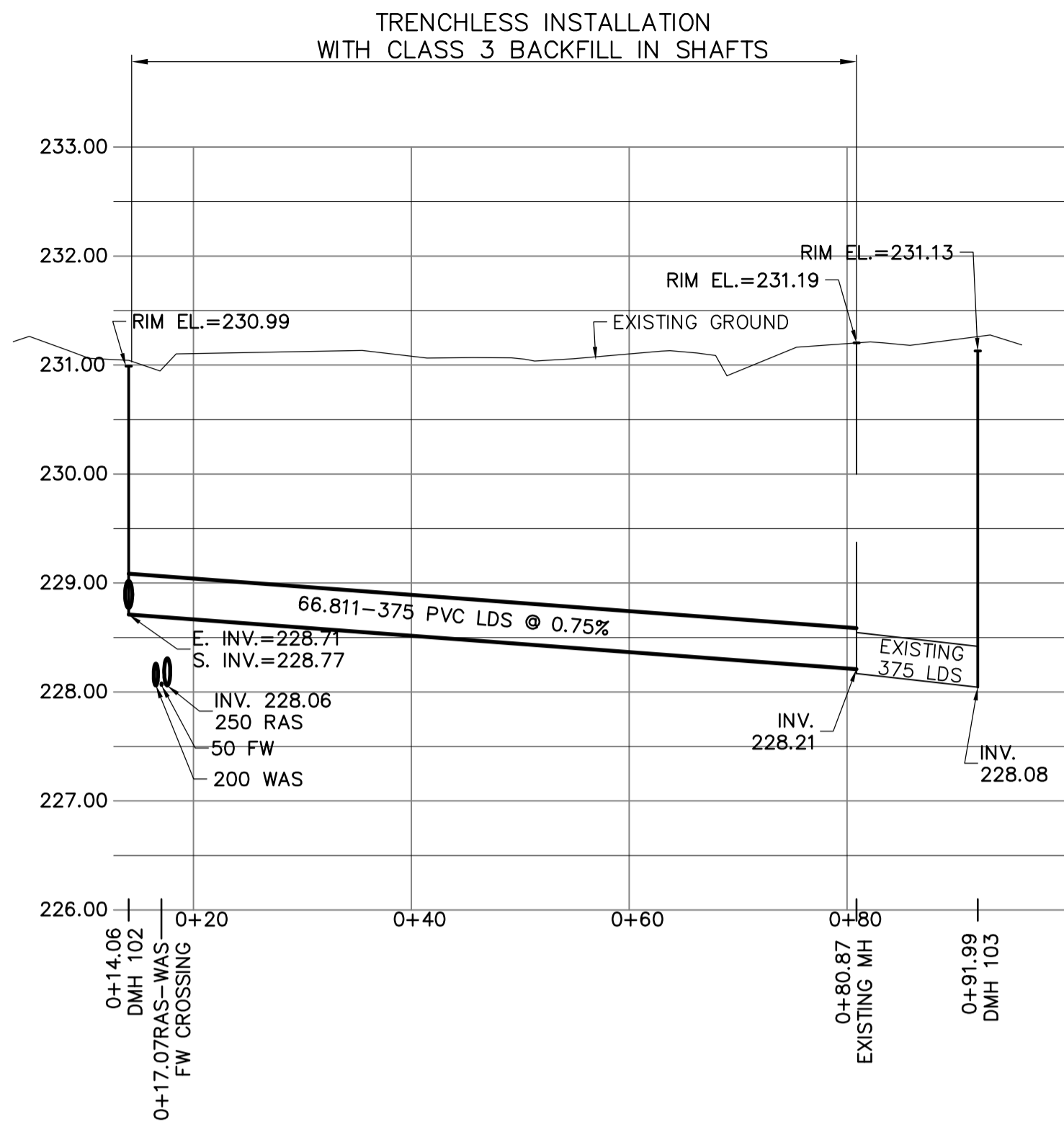
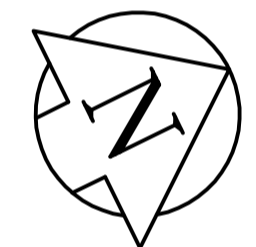
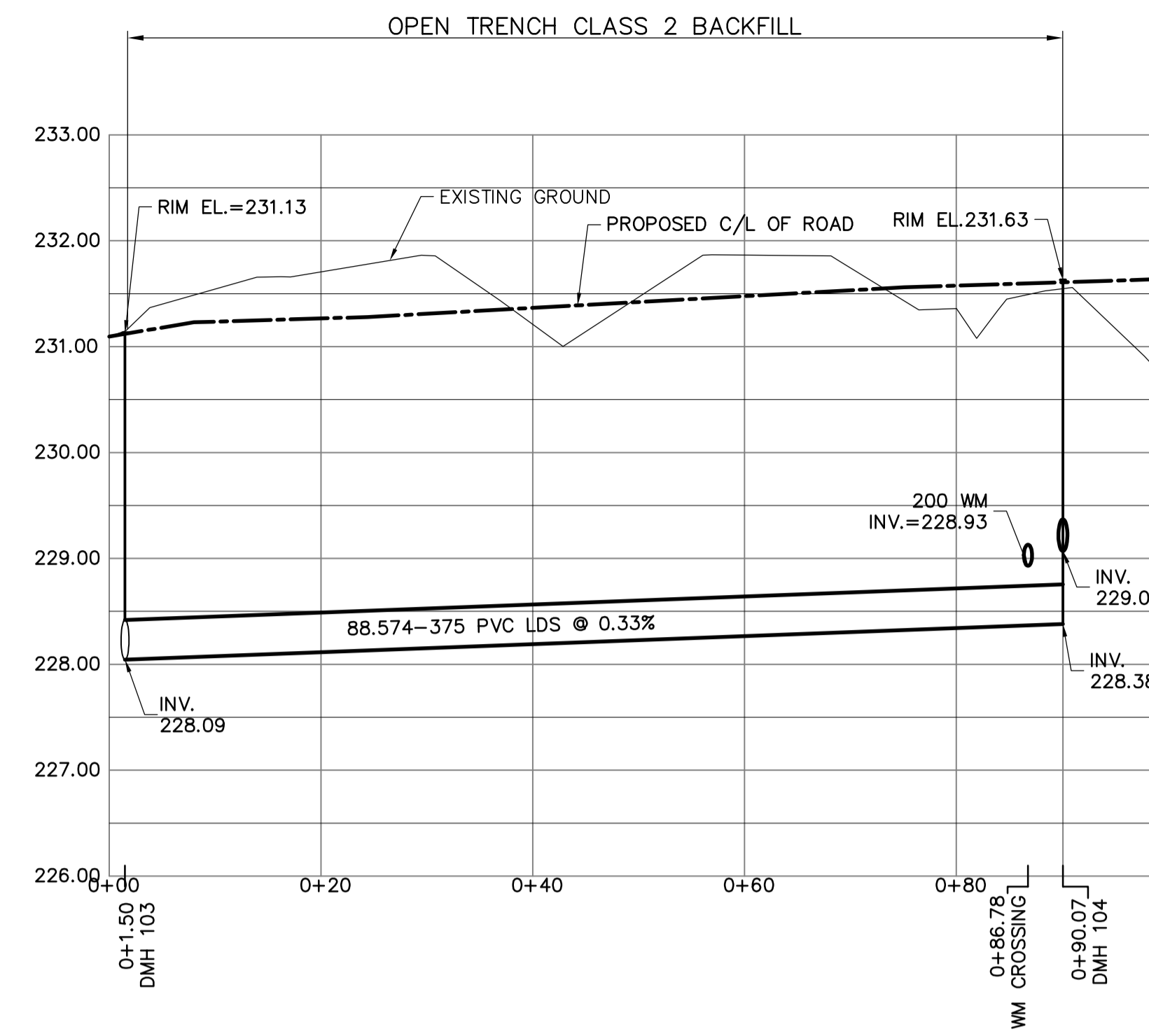
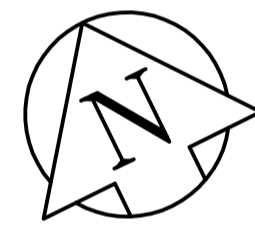


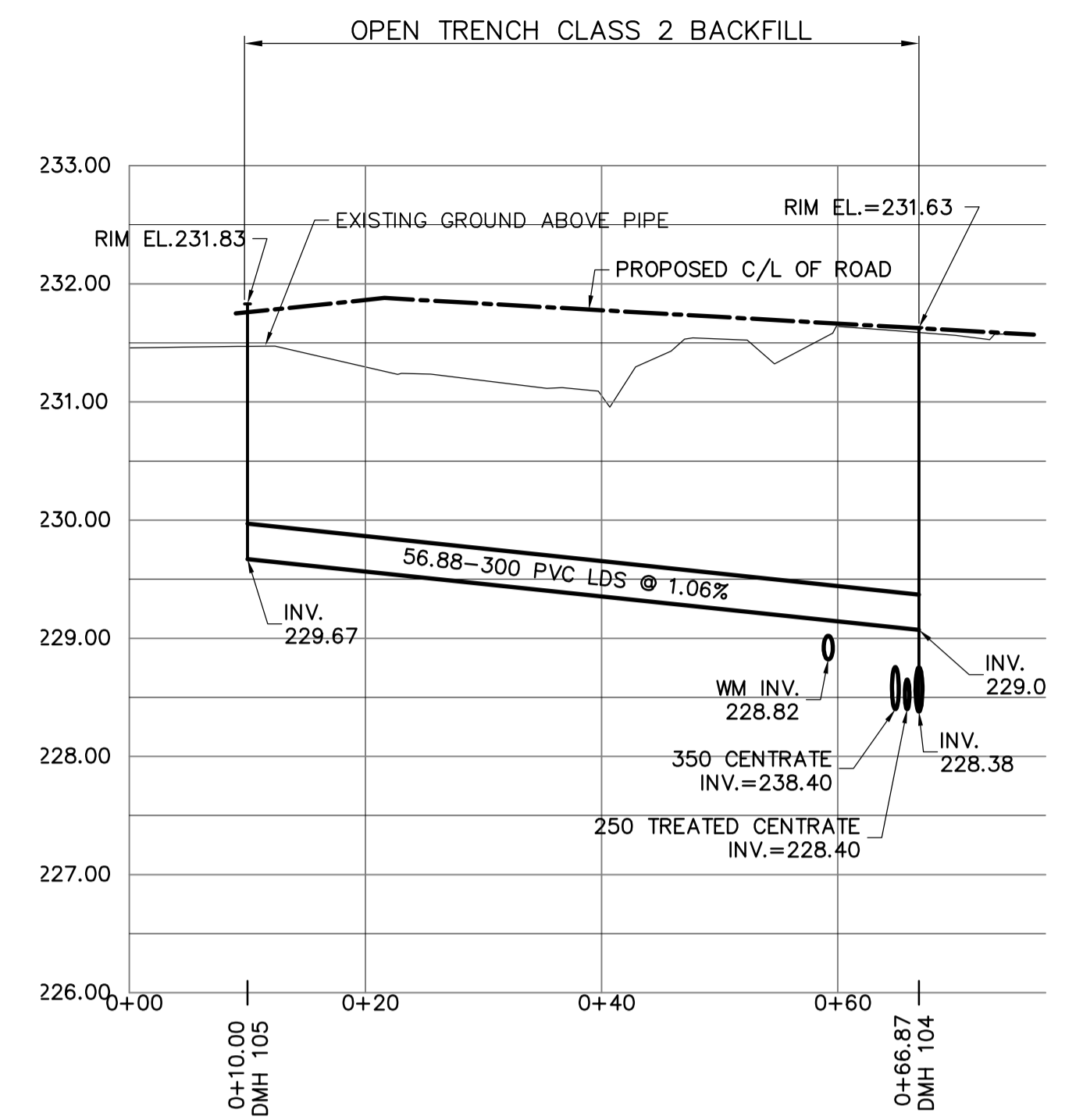
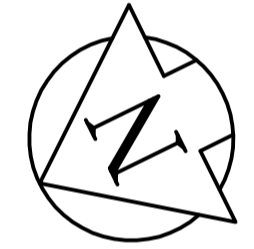
1 PROFILE  
SCALE AS SHOWN



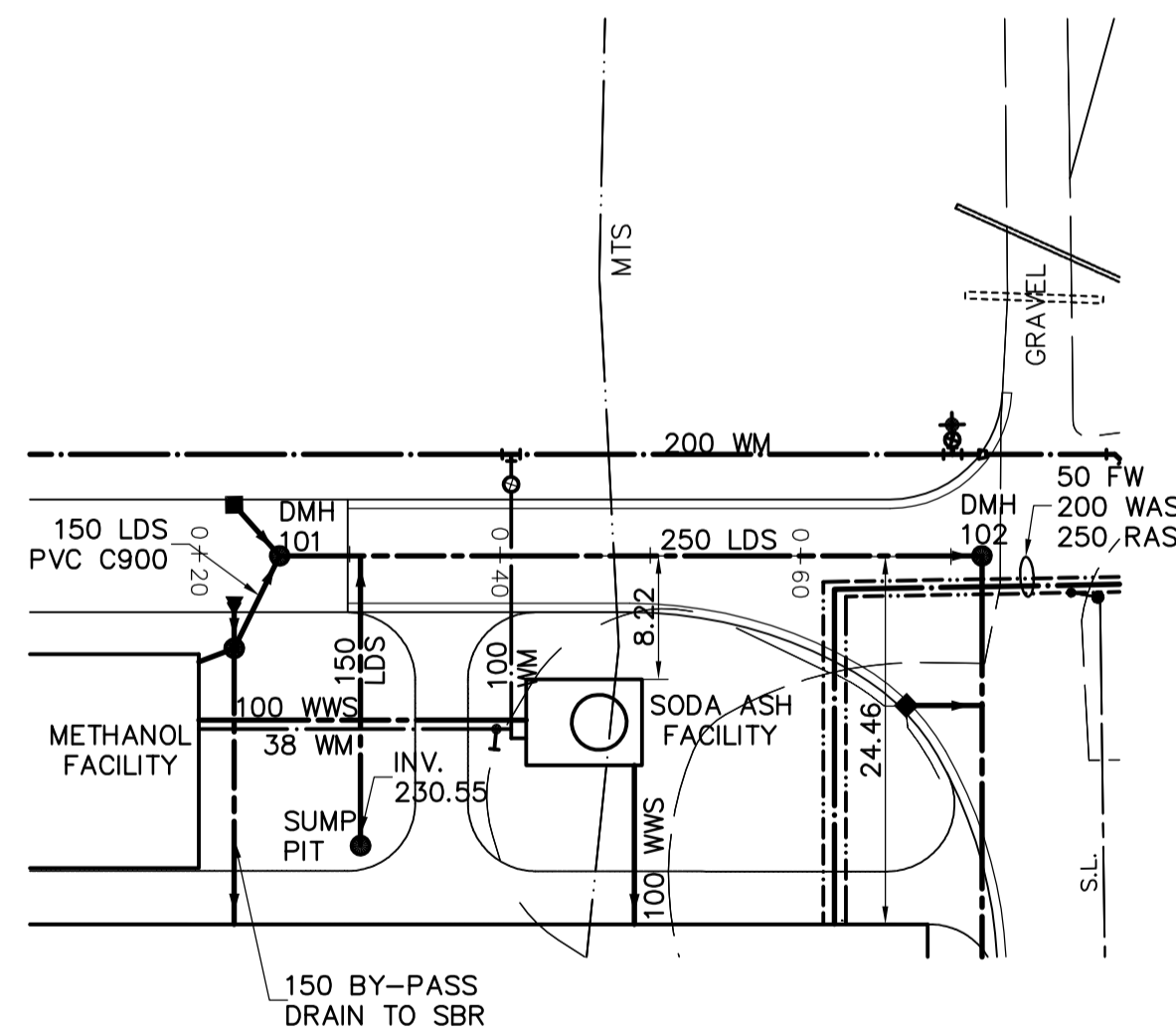
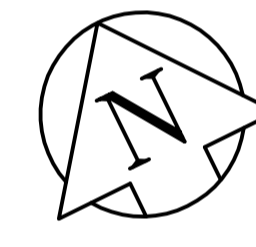
2 PROFILE  
SCALE AS SHOWN



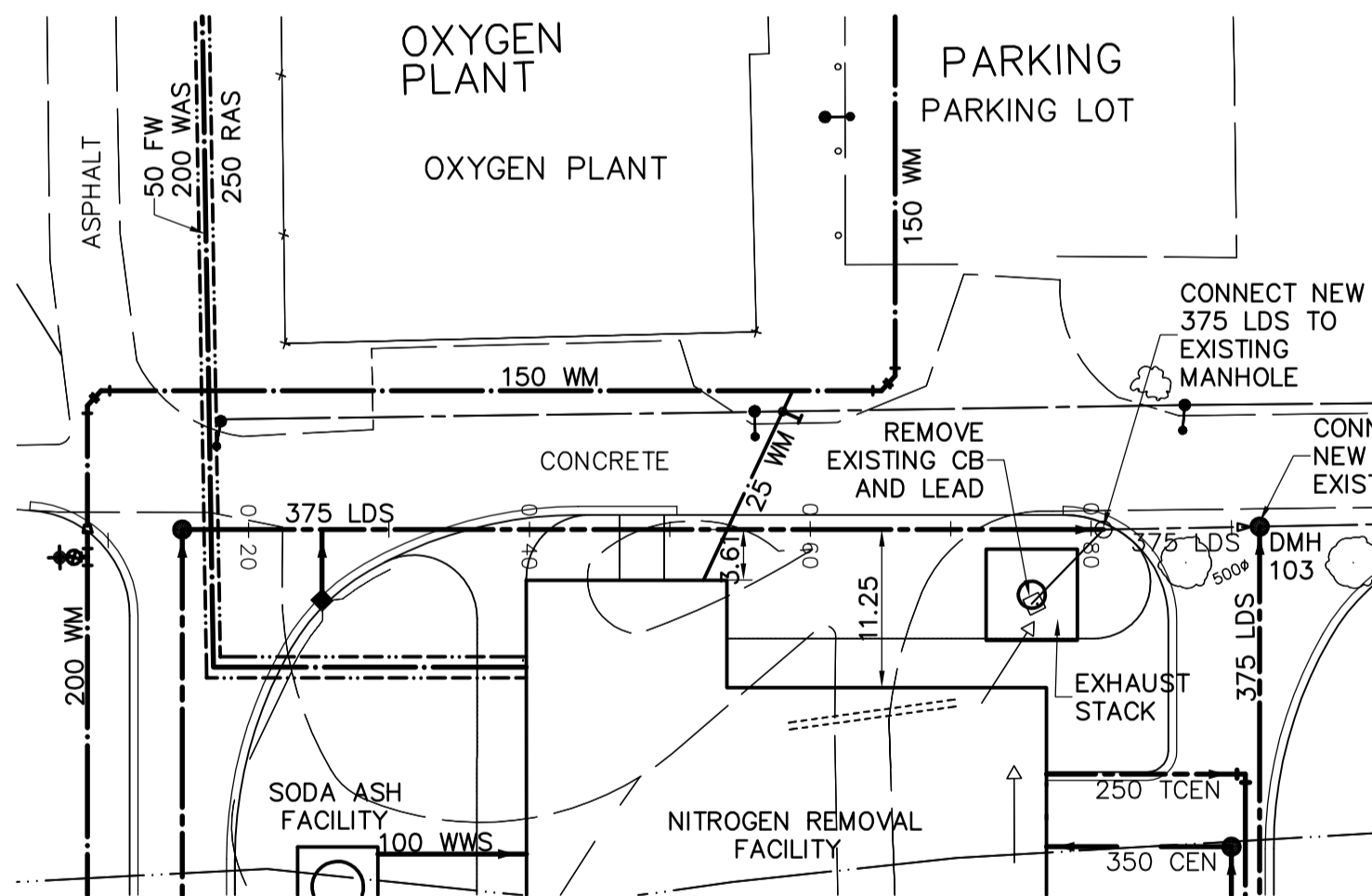
3 PROFILE  
SCALE AS SHOWN



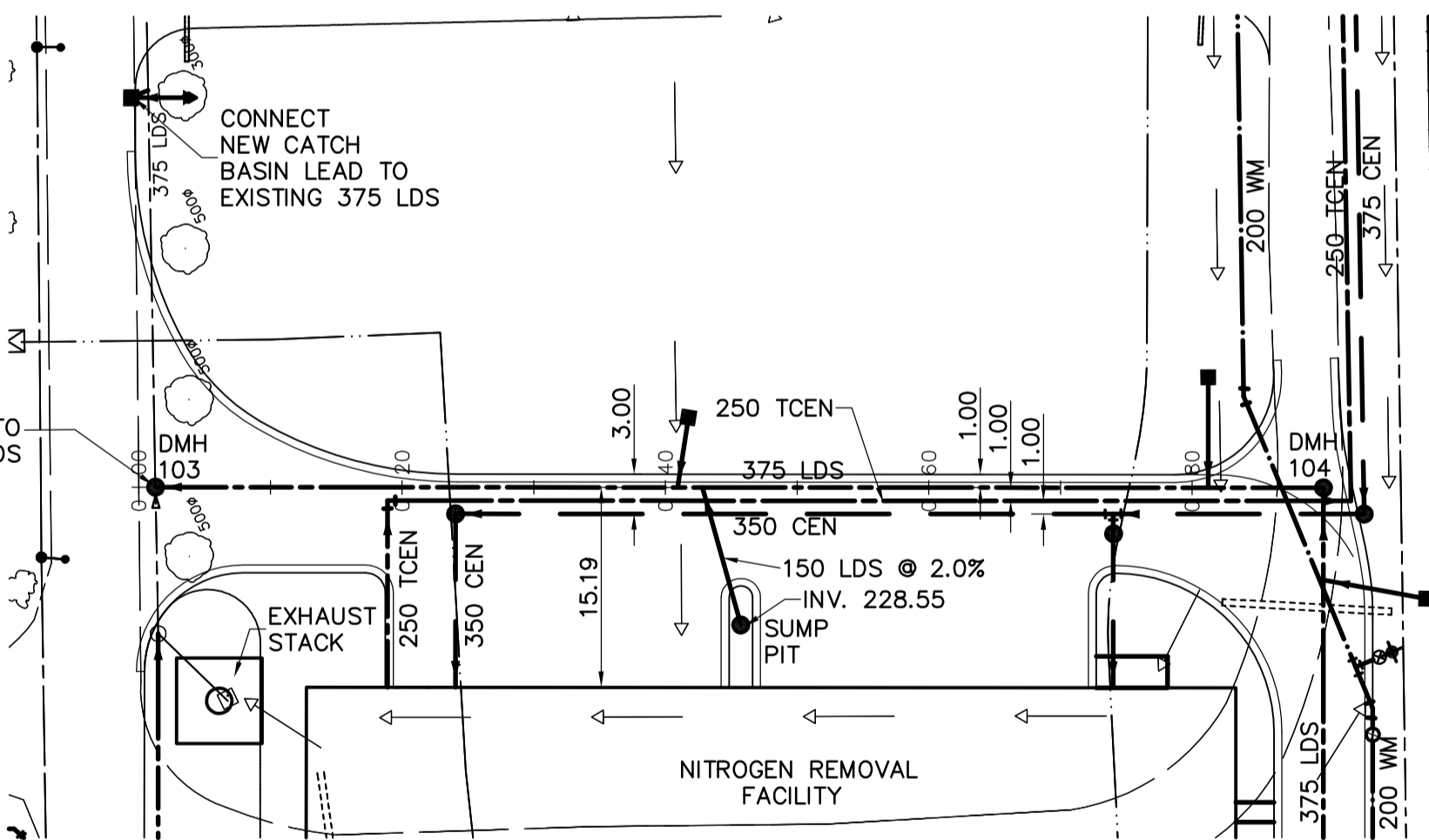
4 PROFILE  
SCALE AS SHOWN



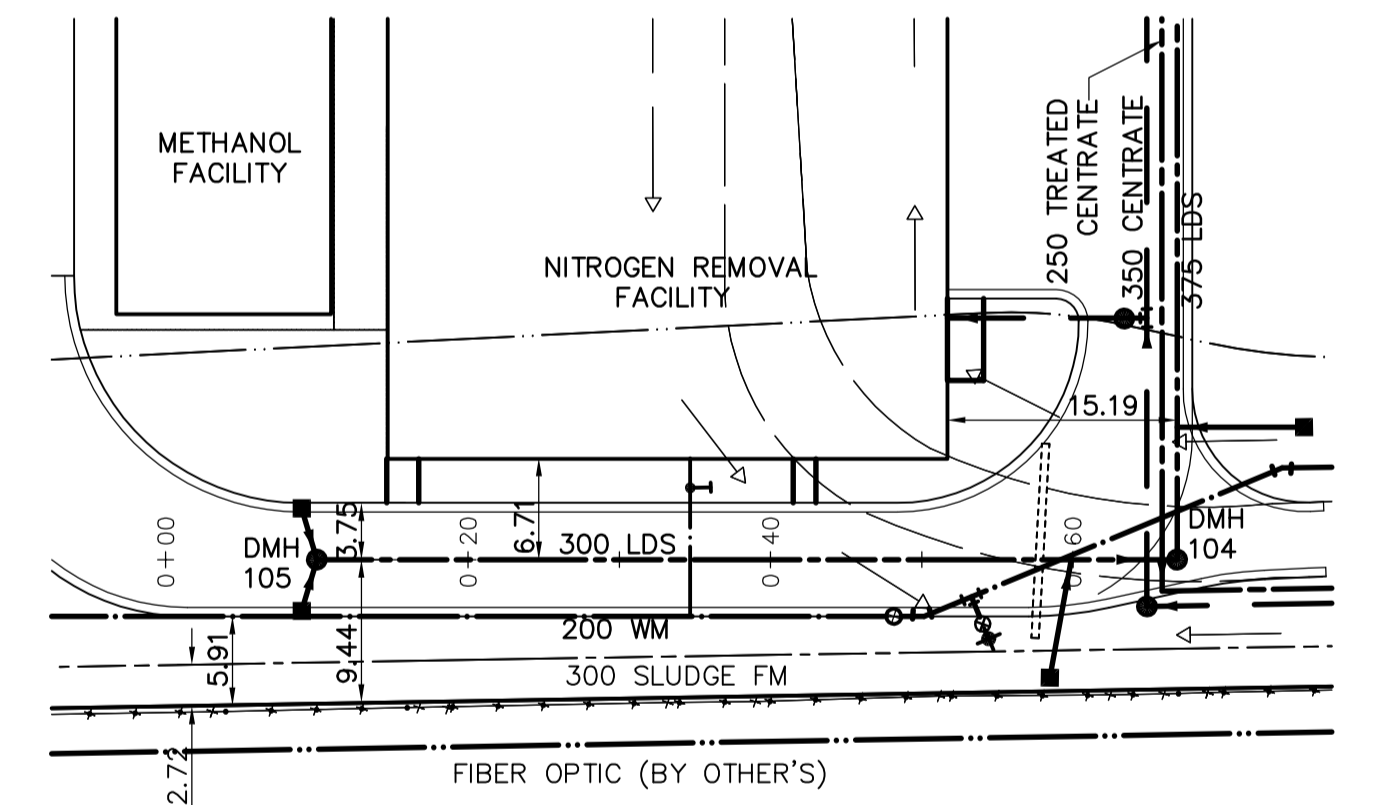
1 PLAN  
SCALE AS SHOWN



2 PLAN  
SCALE AS SHOWN



3 PLAN  
SCALE AS SHOWN



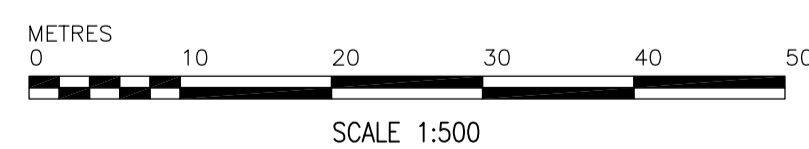
4 PLAN  
SCALE AS SHOWN

GENERAL NOTES:

- A. BASELINE MEASURED DOWN CENTERLINE OF WATERMAIN.
- B. EARTHTECH FIELD BOOK No. 4401
- C. LOCATION OF UNDERGROUND STRUCTURES AS SHOWN ARE BASED ON THE BEST INFORMATION AVAILABLE, BUT NO GUARANTEE IS GIVEN THAT ALL EXISTING UTILITIES ARE SHOWN OR THAT THE GIVEN LOCATIONS ARE EXACT. CONFIRMATION OF EXISTENCE AND EXACT LOCATION OF ALL SERVICES MUST BE OBTAINED FROM THE INDIVIDUAL UTILITIES BEFORE PROCEEDING WITH CONSTRUCTION.

CONSTRUCTION NOTES

- 1. ALL WORK AND MATERIALS SHALL CONFORM TO THE CITY OF WINNIPEG STANDARD CONSTRUCTION SPECIFICATIONS.
- 2. RESTORE ALL SURFACES TO A CONDITION EQUAL TO OR BETTER THAN ORIGINAL CONDITION.
- 3. ALL CATCH BASIN ARE 1.80m DEEP UNLESS NOTED.
- 4. ALL CATCH BASIN LEADS ARE 250mm PVC SDR35 UNLESS NOTED
- 5. SEE DRAWING 8.01 FOR FINISHED CATCH BASIN RIM ELEVATION
- 6. LDS PIPING TO BE PVC DR35 FOR SIZES 150-250mm AND PVC DR35 OR OPEN PROFILE RIBBED PVC FOR SIZES 300-375mm UNLESS NOTED.



150 mm W.M.	WATERMAIN	150 mm W.M.	HYDRO	M.T.S.	LIGHT STANDARD
◇	HYDRANT	+	CONCRETE	CONCRETE	BOLLARD
○	VALVE	●	ASPHALT	TEST HOLES	FIRE EXTINGUISHER
300mm L.D.S.	LAND DRAINAGE SEWER	300mm L.D.S.	PROPERTY LINE	ELEVATION	CURB STOP
250mm W.W.S.	WASTEWATER SEWER	250mm W.W.S.	TREE	ANODE	TREATED CENTRATE
○	MANHOLE	●	CONCRETE SIDEWALK	FENCE	@ RAILWAY TRACK
□	CATCH BASIN	■			DITCH
▽	CURB INLET	▲			RAS
+	JUNCTIONS	+			WAS
—	CULVERT	—			FW
—	GAS	—			CENTRATE
EXISTING	LEGEND - PLAN	PROPOSED	EXISTING	LEGEND - PLAN	PROPOSED



00	ISSUED FOR TENDER	06/05/15	FC
NO.	REVISIONS	DATE	BY
		2006/01/15	



DESIGNED BY	GSK	CHECKED BY	KWF
DRAWN BY	FC	APPROVED BY	JEH
SCALE:	HOR: 1:500 VERT: 1:50	RELEASED FOR CONSTRUCTION BY:	K. MARTENS
DATE	2006/01/15	DATE	2006/05/15

ENGINEER'S SEAL	
ORIGINAL SIGNED BY	K.W. FITCHETT
	2006/05/15
CONSULTANT DRAWING NO.	C6.01

**THE CITY OF WINNIPEG**  
WATER AND WASTE DEPARTMENT  
ENGINEERING DIVISION

NEWPC CENTRATE NUTRIENT TREATMENT  
NITROGEN REMOVAL FACILITY

CIVIL  
LAND DRAINAGE  
PLAN AND PROFILE

CITY FILE NUMBER  
SHEET OF  
CITY DRAWING NUMBER