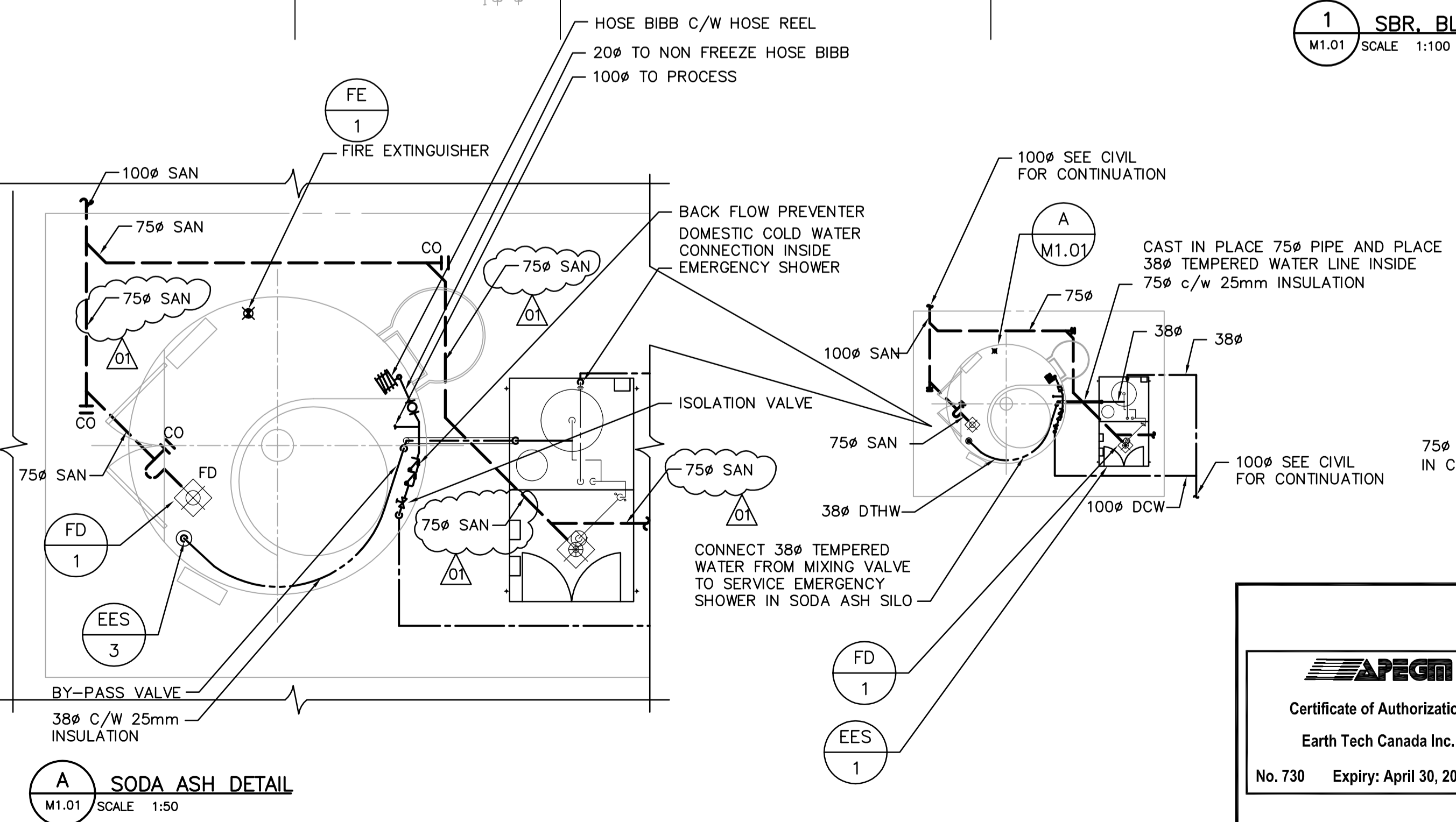
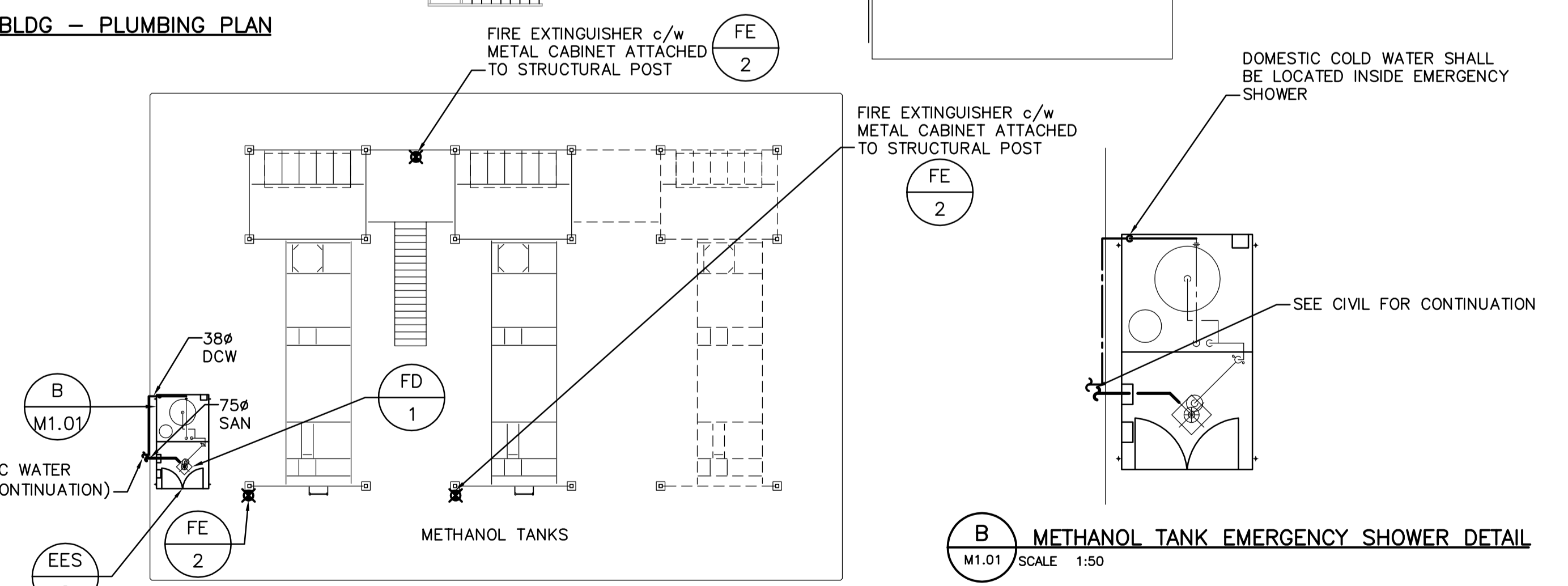


1 SBR, BLOWER BLDG & EXHAUST BLDG - PLUMBING PLAN
M1.01 SCALE 1:100

GENERAL NOTE:
1. CONTRACTOR SHALL SLEEVE THRU ALL SANITARY LINES LARGER THAN 38mm THRU SBR TANK. (SEE DETAIL) COORDINATE WITH STRUCTURAL TRADES



A SODA ASH DETAIL
M1.01 SCALE 1:50



B METHANOL TANK EMERGENCY SHOWER DETAIL
M1.01 SCALE 1:50

<p>APEGM Certificate of Authorization Earth Tech Canada Inc. No. 730 Expiry: April 30, 2007</p>	B.M. ELEV.	<p>EarthTech A Tyco International Ltd. Company</p>	ENGINEER'S SEAL	<p>THE CITY OF WINNIPEG WATER AND WASTE DEPARTMENT ENGINEERING DIVISION NEWPCC CENTRATE NUTRIENT TREATMENT NITROGEN REMOVAL FACILITY</p>	
	DESIGNED BY: AB		CHECKED BY: AB		ORIGINAL SIGNED BY: A. BURACHYNSKY
	DRAWN BY: DJP		APPROVED BY: JEH		2006/05/15
	SCALE: AS NOTED		RELEASED FOR CONSTRUCTION BY: K. MARTENS		CONSULTANT DRAWING NO. M1.01
01 291-2006 ADDENDUM 3 06/07/12 DJP	DATE 2006/05/15	DATE 2006/05/23	MECHANICAL BLOWER BUILDING, SODA ASH AND METHANOL TANKS - PLUMBING PLAN	CITY FILE NUMBER	
00 ISSUED FOR TENDER 06/05/15 DJP				SHEET OF	
NO. REVISIONS	DATE	BY		CITY DRAWING NUMBER	