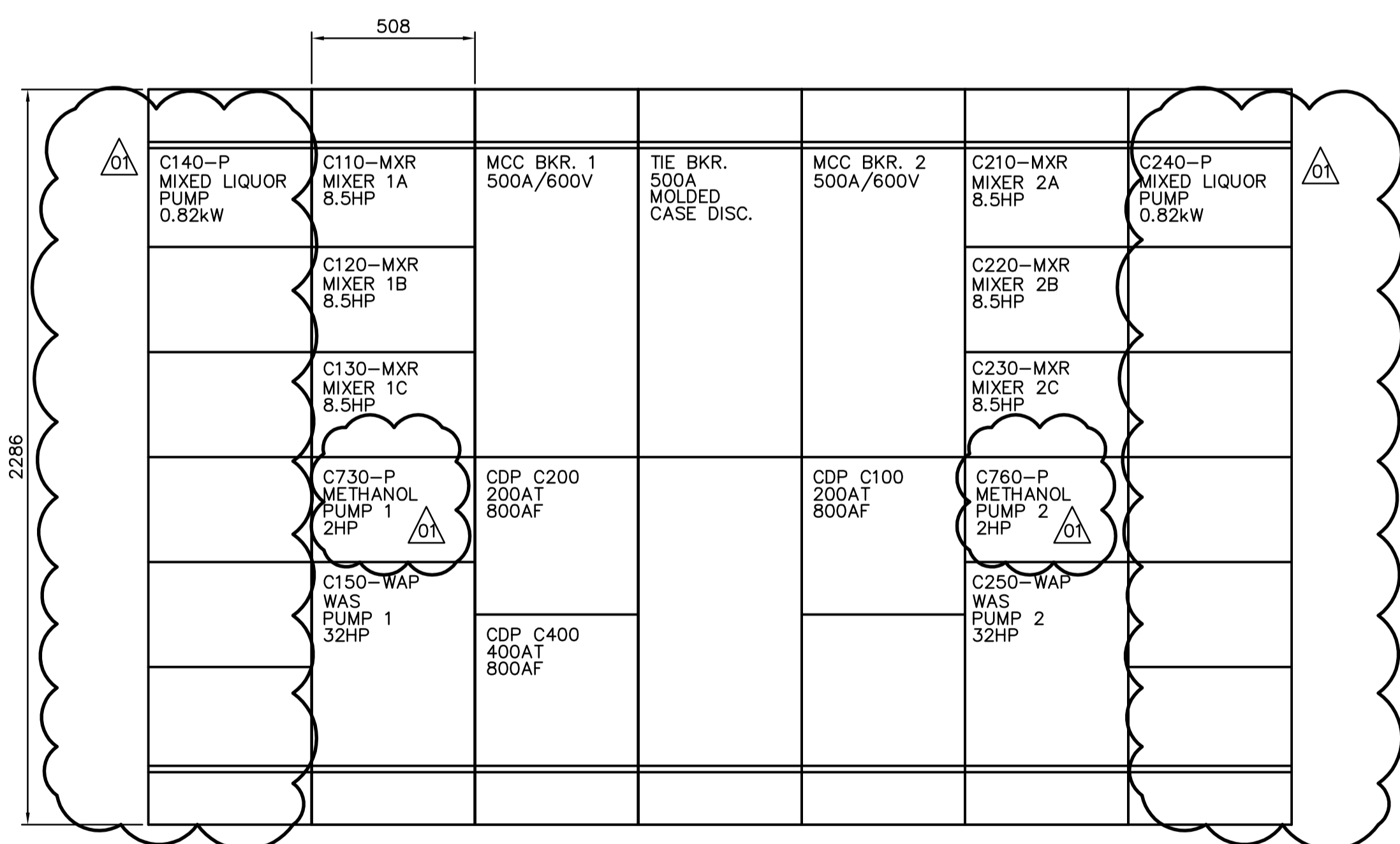


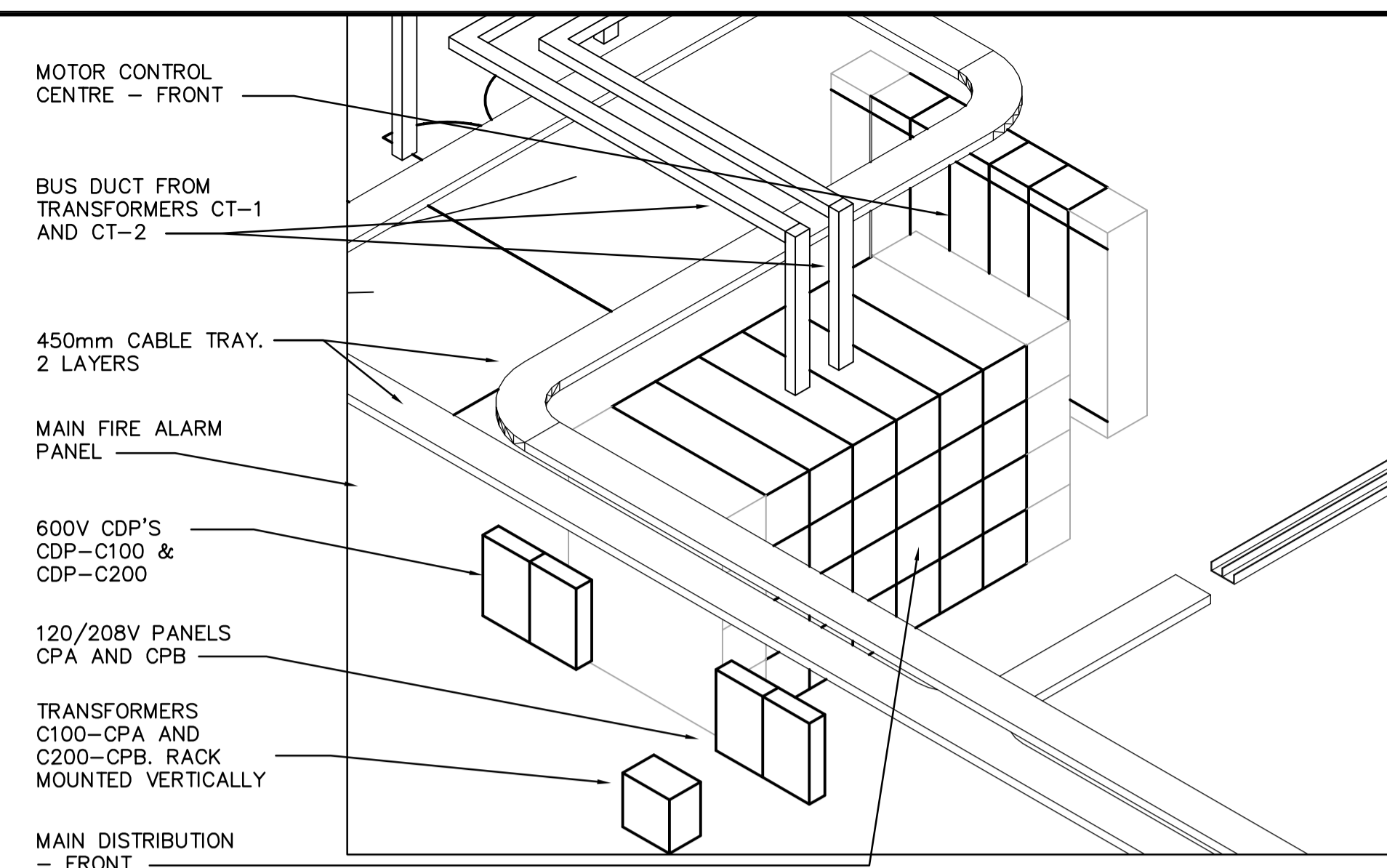
1 ELECTRICAL ROOM – MAIN DISTRIBUTION FRONT VIEW  
E3.04 SCALE 1:20

NOTE:  
FOR MOTORS WITH EXTERNAL THERMISTOR AND MOISTURE RELAYS, ALLOW EXTRA SPACE FOR EACH MOTOR STARTER. THE RELAYS SHALL BE MOUNTED AND WIRED INSIDE EACH MOTOR STARTER. REFER TO P&ID'S FOR LIST OF MOTORS WITH ABOVE RELAYS. DETAILED WIRING DIAGRAMS WILL BE BASED ON MOTOR SUPPLIER SHOP DRAWINGS.

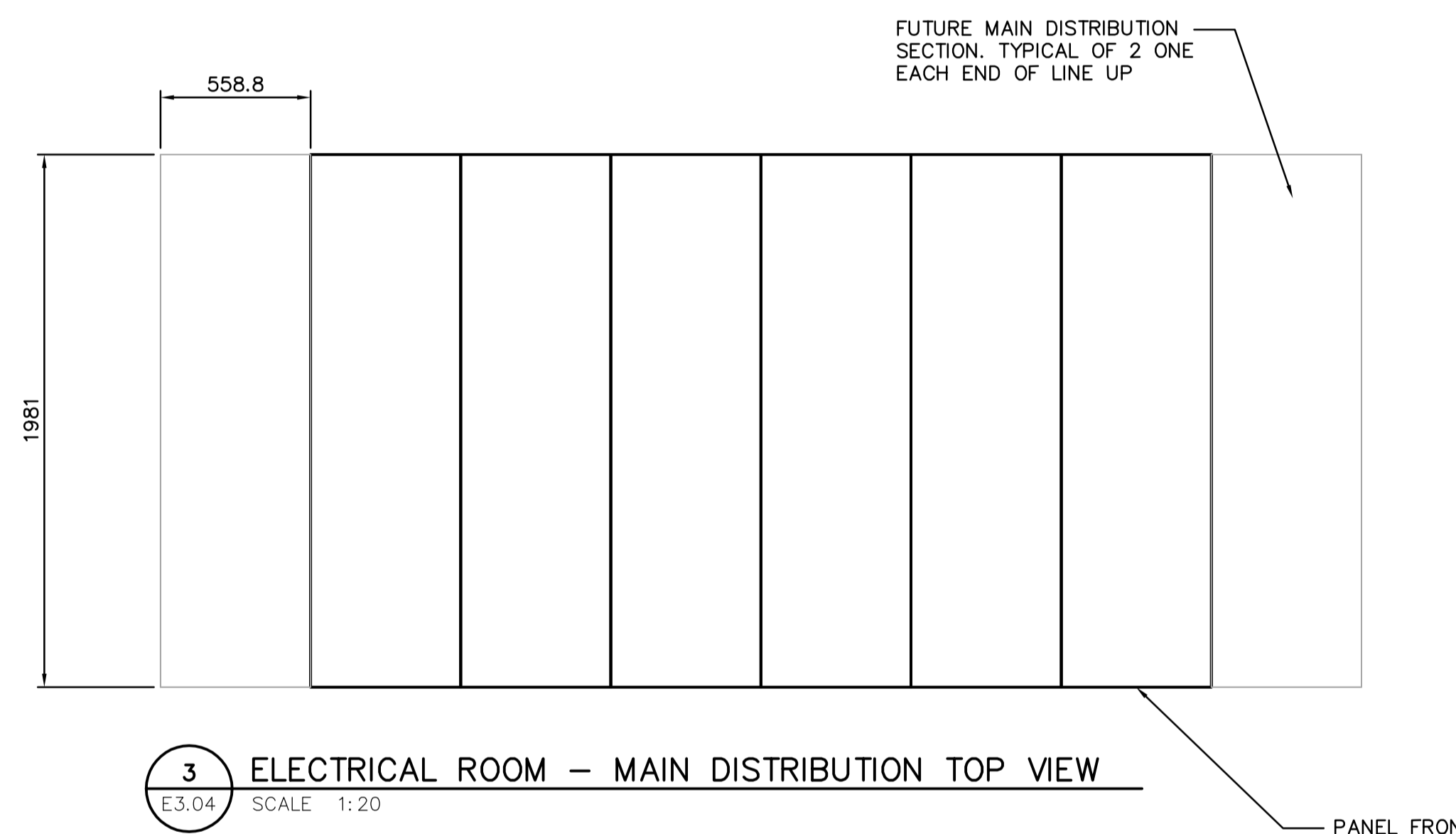


2 ELECTRICAL ROOM – MOTOR CONTROL CENTRE 1C & 2C FRONT VIEW  
E3.04 SCALE 1:20

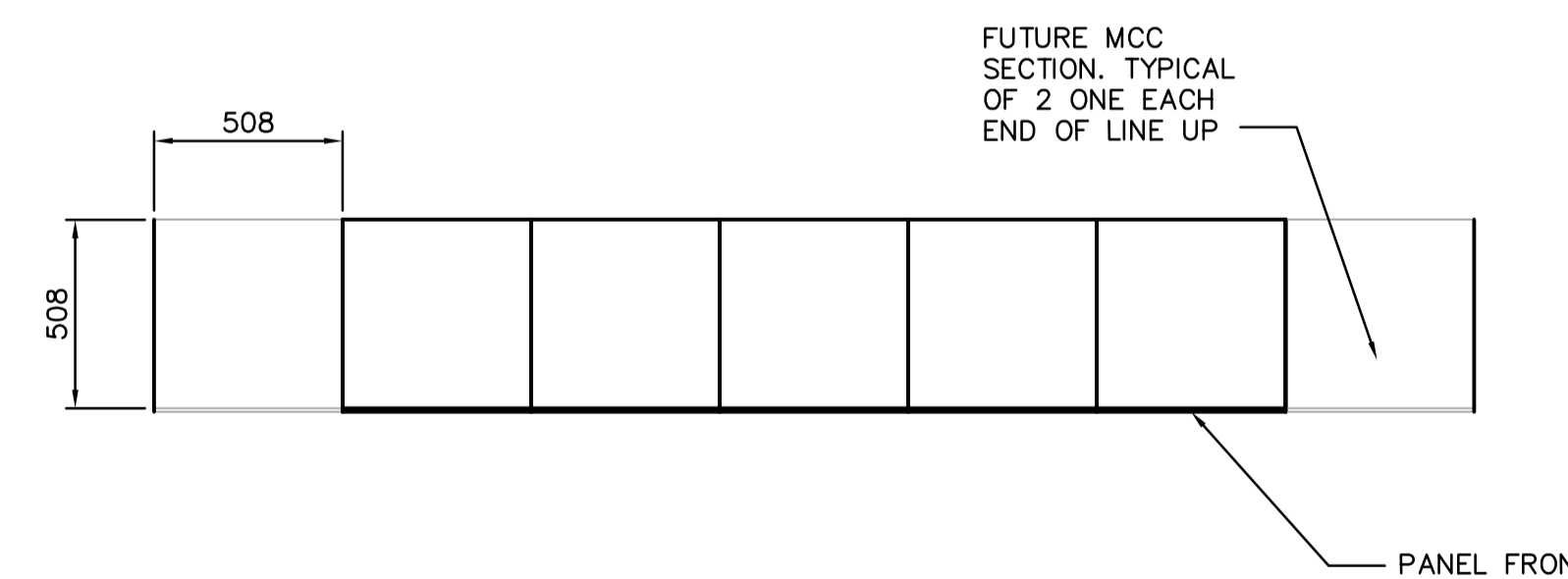
NOTE:  
FOR MOTORS WITH EXTERNAL THERMISTOR AND MOISTURE RELAYS, ALLOW EXTRA 1X SPACE FOR EACH MOTOR STARTER. THE RELAYS SHALL BE MOUNTED AND WIRED INSIDE EACH MOTOR STARTER. REFER TO P&ID'S FOR LIST OF MOTORS WITH ABOVE RELAYS. DETAILED WIRING DIAGRAMS WILL BE BASED ON MOTOR SUPPLIER SHOP DRAWINGS.



ELECTRICAL ROOM – ISOMETRIC VIEW  
SCALE: 1:50



3 ELECTRICAL ROOM – MAIN DISTRIBUTION TOP VIEW  
E3.04 SCALE 1:20



4 ELECTRICAL ROOM – MOTOR CONTROL CENTRE 1C & 2C TOP VIEW  
E3.04 SCALE 1:20

<p>Certificate of Authorization Earth Tech Canada Inc. No. 730 Expiry: April 30, 2007</p>	B.M. ELEV.	<p>A Tyco International Ltd. Company</p>	ENGINEER'S SEAL	<p>THE CITY OF WINNIPEG WATER AND WASTE DEPARTMENT ENGINEERING DIVISION</p>					
			DESIGNED BY PS		CHECKED BY GSN	ORIGINAL SIGNED BY P. STRYK			
			DRAWN BY CPG		APPROVED BY JEH	2005/05/15			
			SCALE:		RELEASED FOR CONSTRUCTION BY: K. MARTENS	CONSULTANT DRAWING NO. E3.04			
	NO. REVISIONS	DATE BY	DATE	2006/02/23	DATE	2006/05/15		NEWPCC CENTRATE NUTRIENT TREATMENT NITROGEN REMOVAL FACILITY	CITY FILE NUMBER
								ELECTRICAL ELECTRICAL/CONTROL ROOM M.C.C. AND DISTRIBUTION	SHEET OF
									CITY DRAWING NUMBER