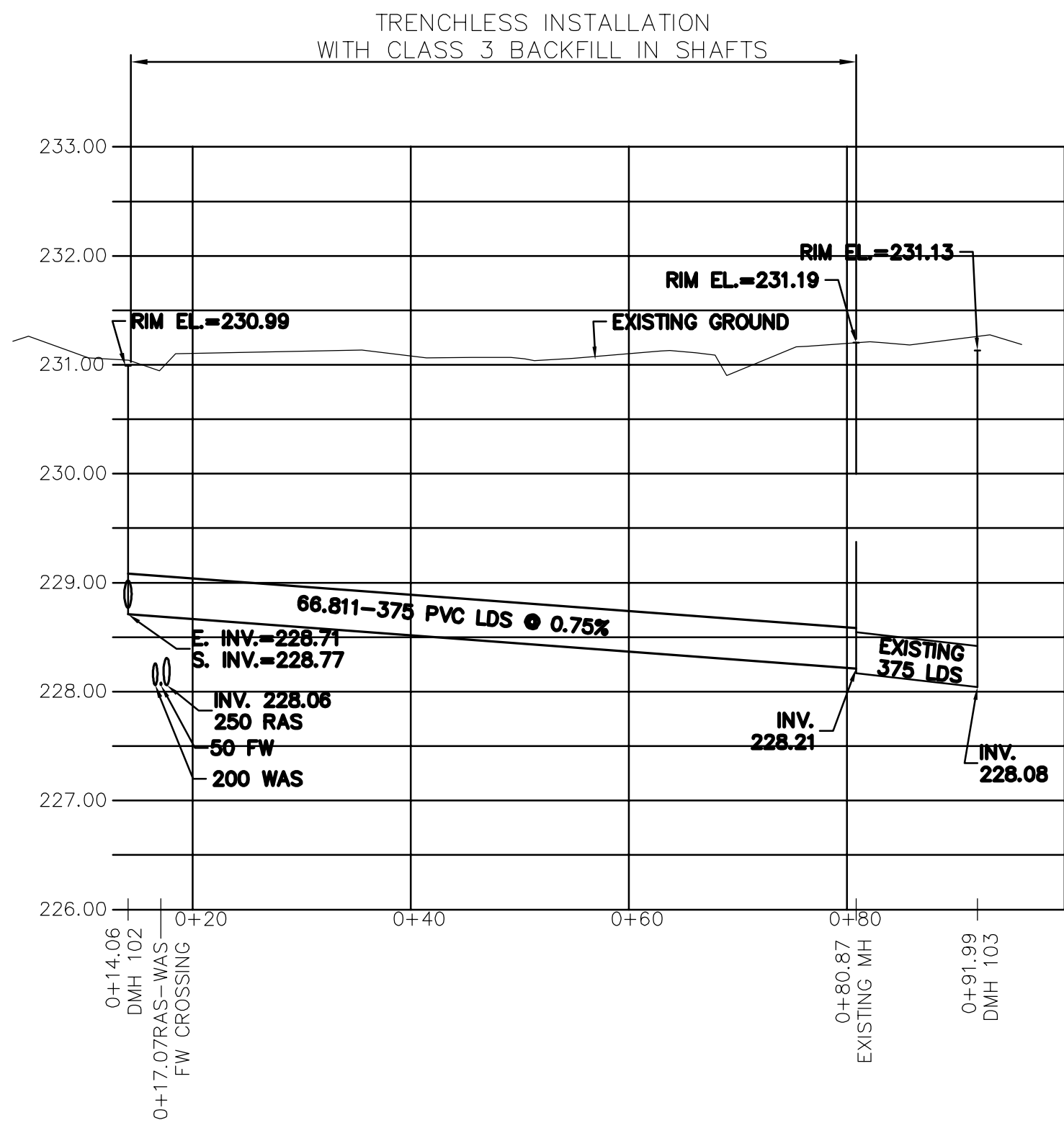
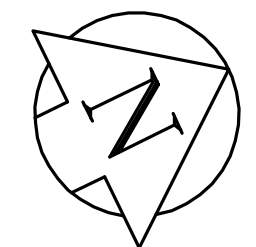
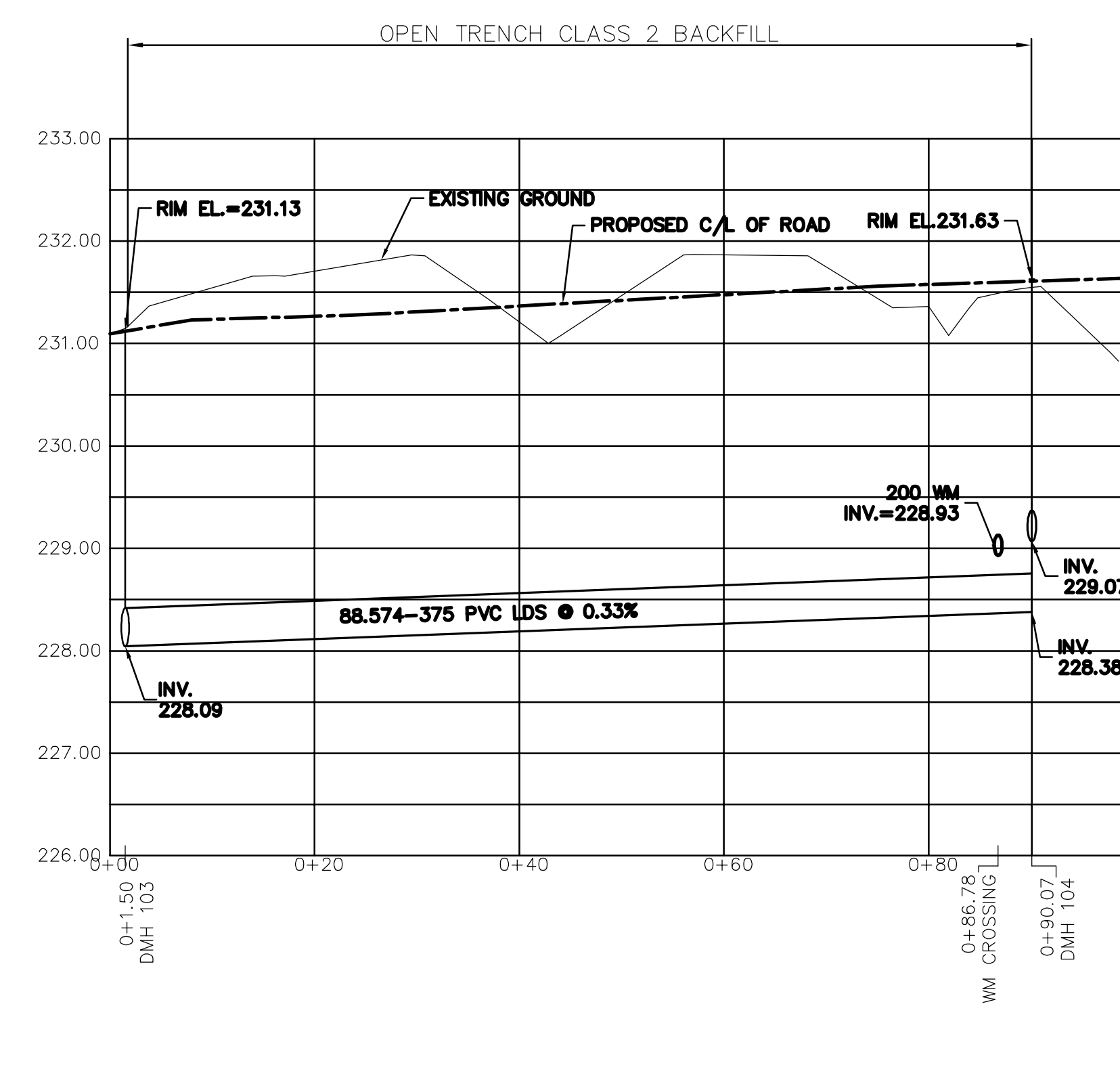
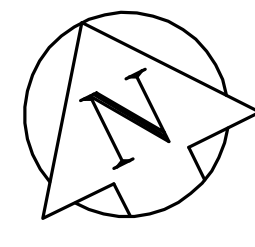


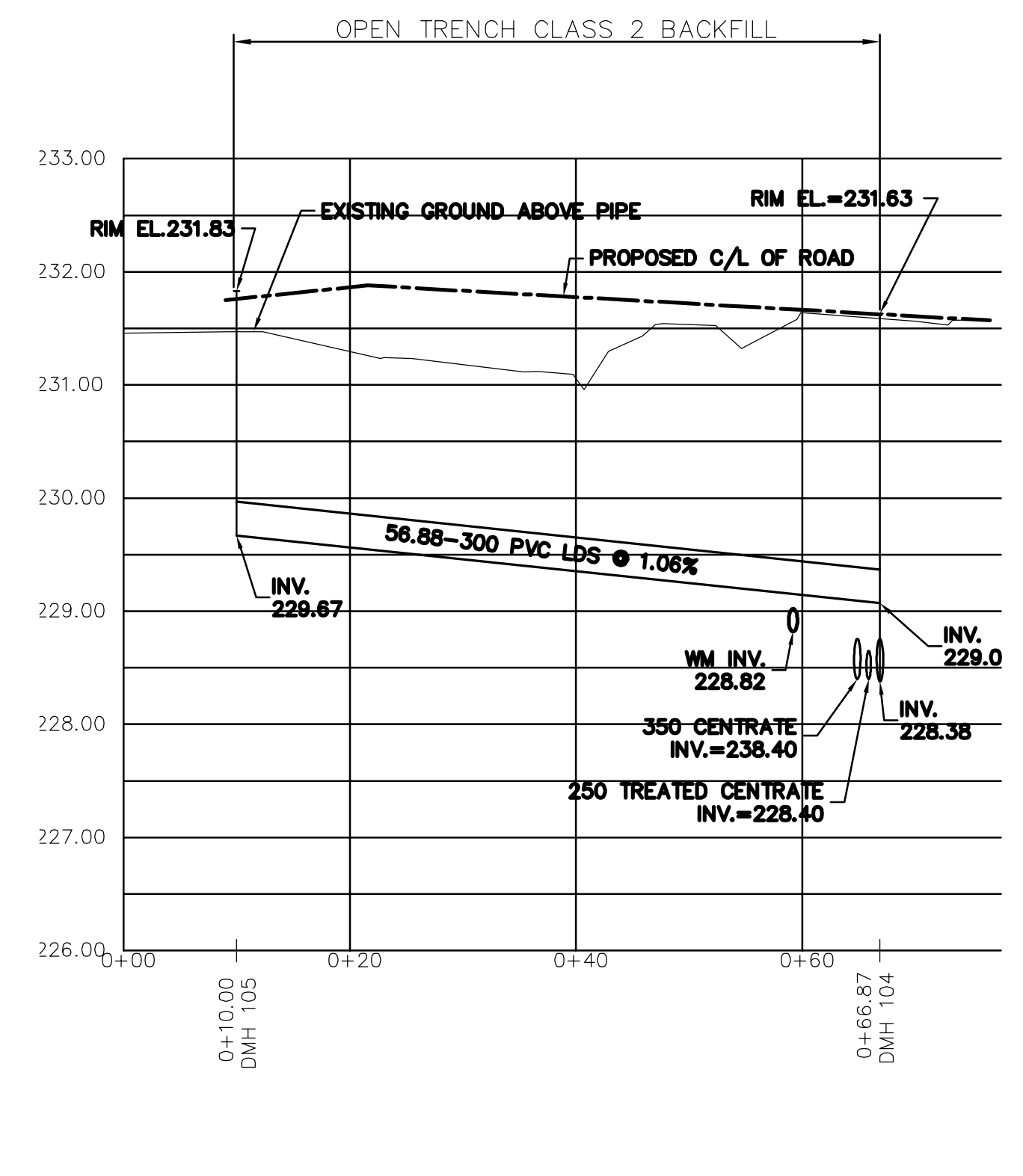
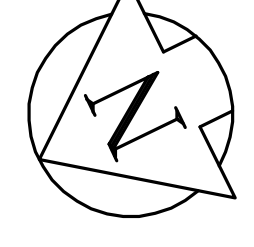
1 PROFILE
SCALE AS SHOWN



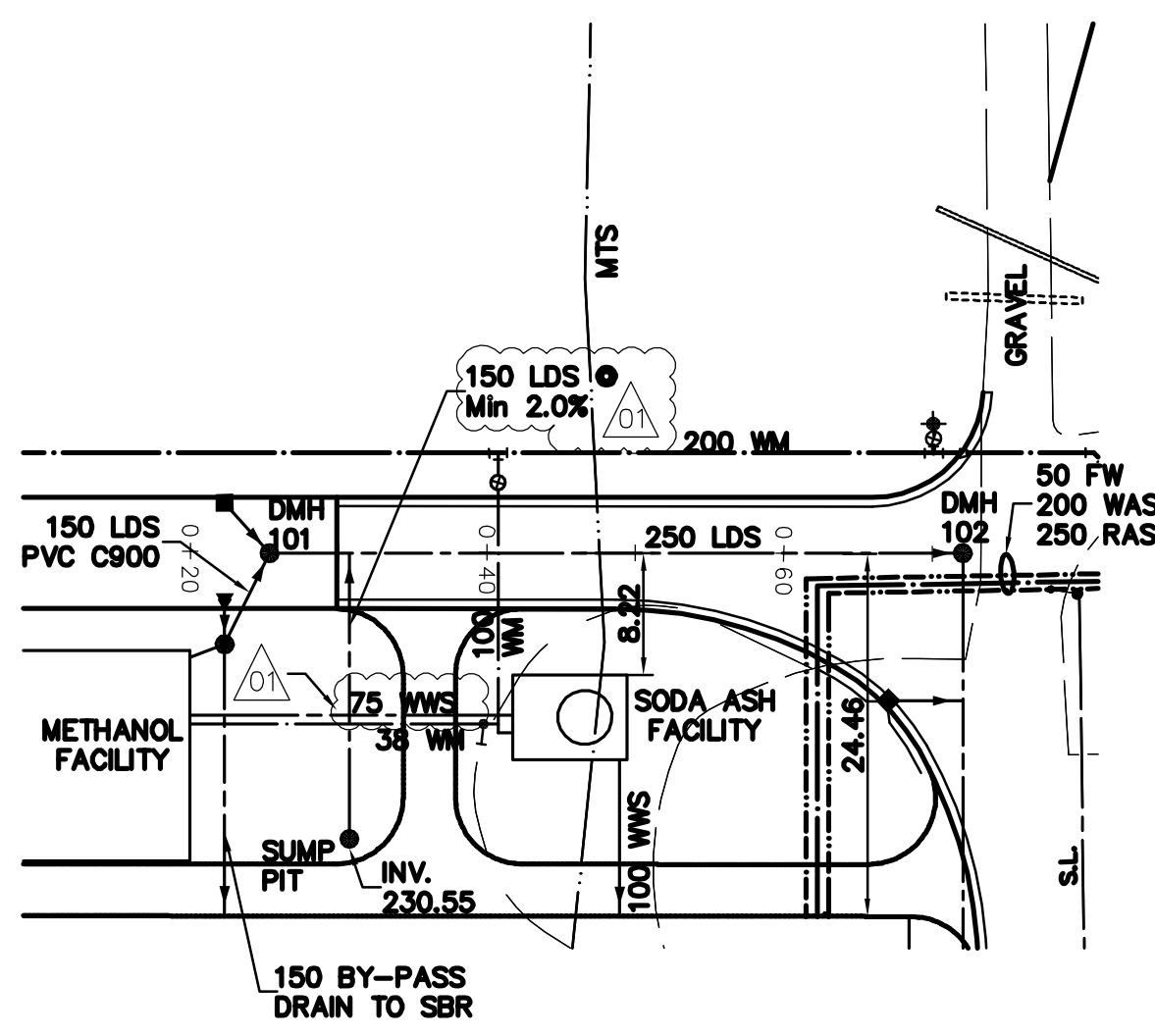
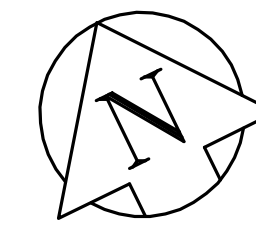
2 PROFILE
SCALE AS SHOWN



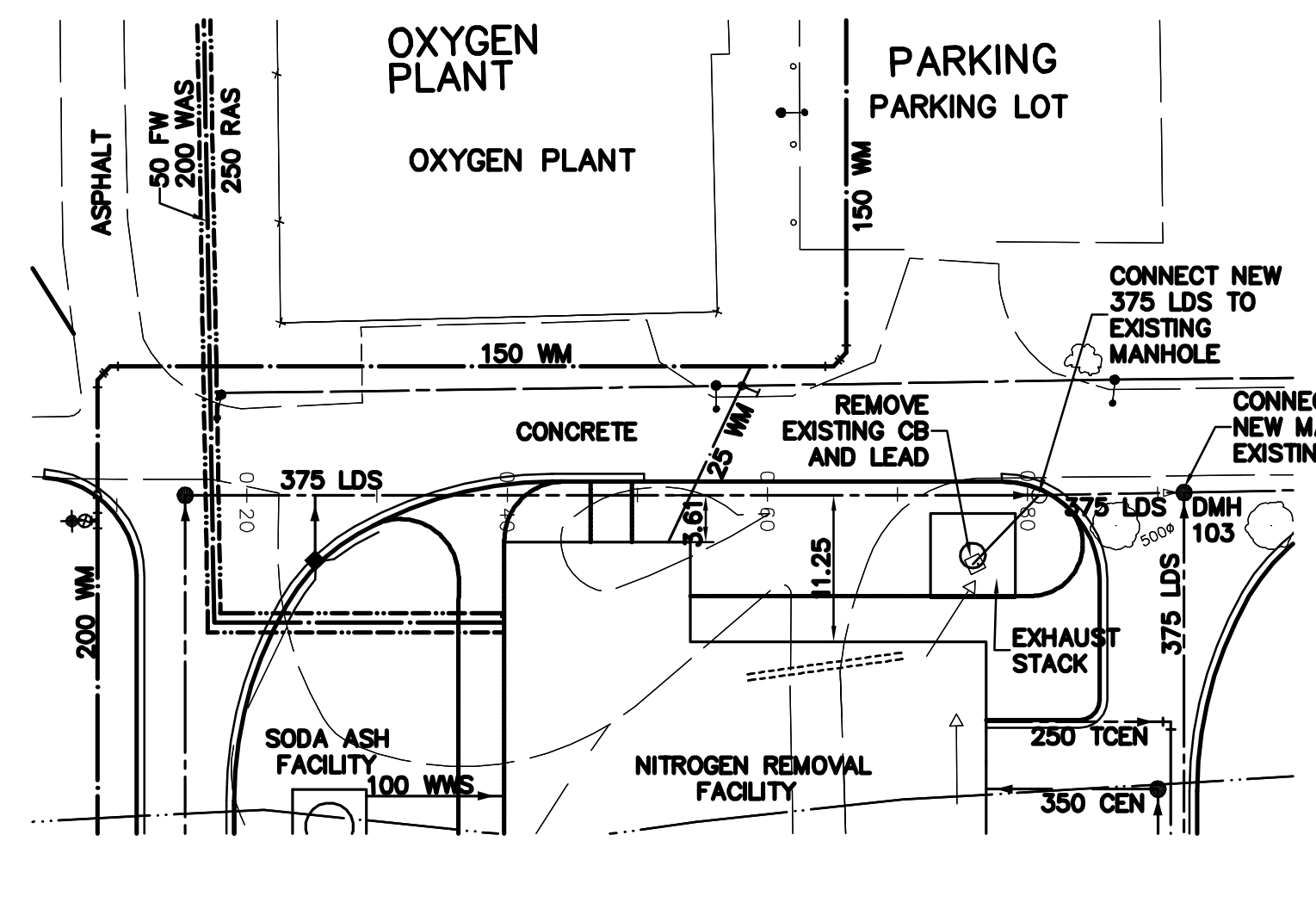
3 PROFILE
SCALE AS SHOWN



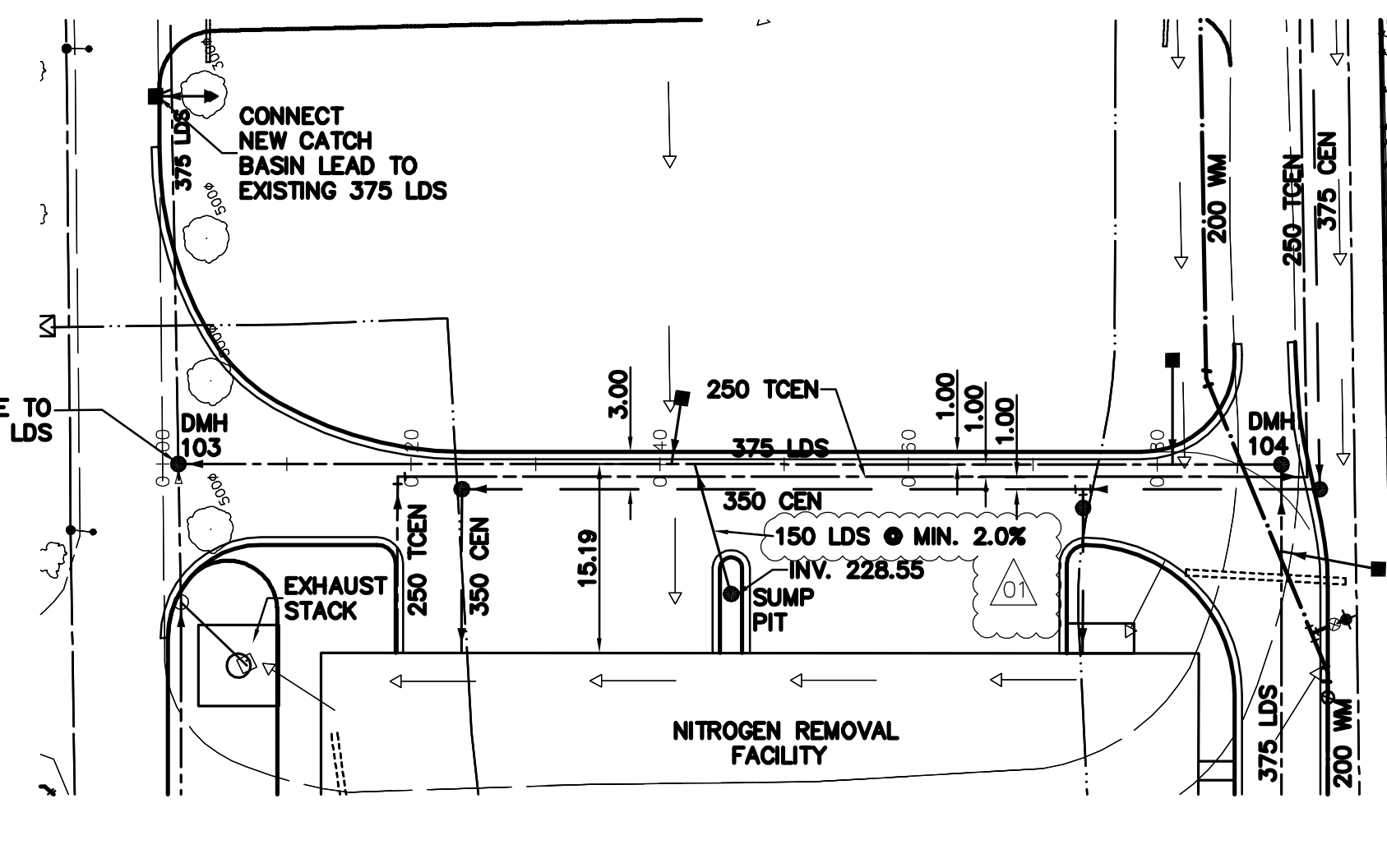
4 PROFILE
SCALE AS SHOWN



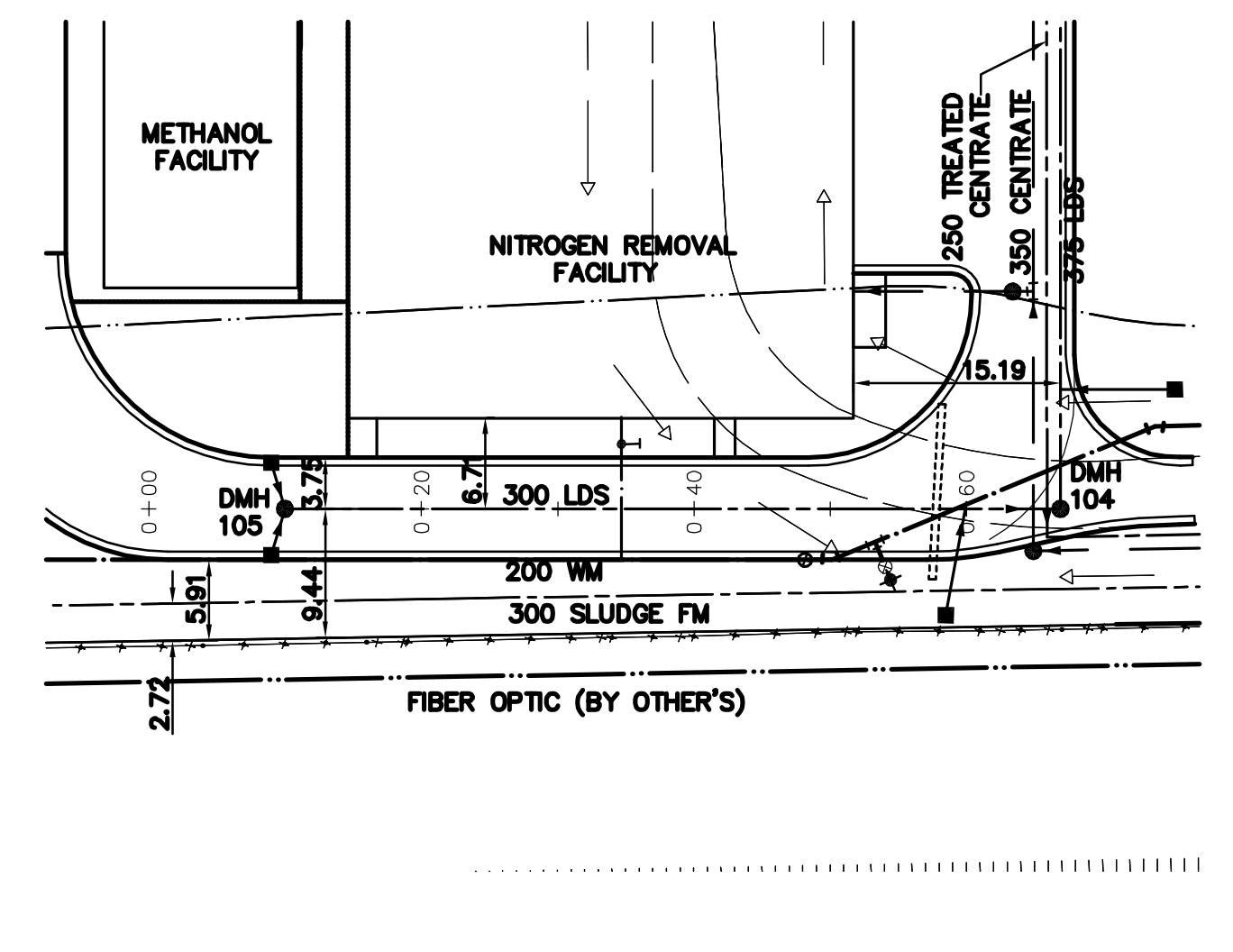
1 PLAN
SCALE AS SHOWN



2 PLAN
SCALE AS SHOWN

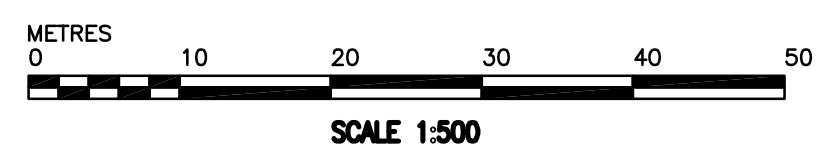


3 PLAN
SCALE AS SHOWN



4 PLAN
SCALE AS SHOWN

GENERAL NOTES:
 A. BASELINE MEASURED DOWN CENTERLINE OF WATERMAIN.
 B. EARTHTECH FIELD BOOK No. 4401
 C. LOCATION OF UNDERGROUND STRUCTURES AS SHOWN ARE BASED ON THE BEST INFORMATION AVAILABLE, BUT NO GUARANTEE IS GIVEN THAT ALL EXISTING UTILITIES ARE SHOWN OR THAT THE GIVEN LOCATIONS ARE EXACT. CONFIRMATION OF EXISTENCE AND EXACT LOCATION OF ALL SERVICES MUST BE OBTAINED FROM THE INDIVIDUAL UTILITIES BEFORE PROCEEDING WITH CONSTRUCTION.



CONSTRUCTION NOTES

- ALL WORK AND MATERIALS SHALL CONFORM TO THE CITY OF WINNIPEG STANDARD CONSTRUCTION SPECIFICATIONS.
- RESTORE ALL SURFACES TO A CONDITION EQUAL TO OR BETTER THAN ORIGINAL CONDITION.
- ALL CATCH BASIN ARE 1.80m DEEP UNLESS NOTED.
- ALL CATCH BASIN LEADS ARE 250mm PVC SDR35 UNLESS NOTED
- SEE DRAWING 8.01 FOR FINISHED CATCH BASIN RIM ELEVATION
- LDS PIPING TO BE PVC DR35 FOR SIZES 150-250mm AND PVC DR35 OR OPEN PROFILE RIBBED PVC FOR SIZES 300-375mm UNLESS NOTED.

150 mm W.M.	WATERMAIN	150 mm W.M.	HYDRO	M.T.S.	LIGHT STANDARD
Hydrant	HYDRANT	Hydrant	CONCRETE	CONCRETE	BOLLARD
Valve	VALVE	Valve	ASPHALT	ASPHALT	FIRE EXTINGUISHER
300mm L.D.S.	LAND DRAINAGE SEWER	300mm L.D.S.	PROPERTY LINE	PROPERTY LINE	CURB STOP
250mm W.W.S.	WASTEWATER SEWER	250mm W.W.S.	TEST HOLES	TEST HOLES	TREATED CENTRATE
Manhole	MANHOLE	Manhole	ELEVATION	ELEVATION	@ RAILWAY TRACK
Catch Basin	CATCH BASIN	Catch Basin	TREE	TREE	DITCH
Curb Inlet	CURB INLET	Curb Inlet	ANODE	ANODE	RAS
Junctions	JUNCTIONS	Junctions	CONCRETE SIDEWALK	CONCRETE SIDEWALK	WAS
Culvert	CULVERT	Culvert	FENCE	FENCE	FW
Gas	GAS	Gas			CENTRATE
EXISTING	LEGEND - PLAN	PROPOSED	EXISTING	LEGEND - PLAN	PROPOSED

APCGM
 Certificate of Authorization
 Earth Tech Canada Inc.
 No. 730 Expiry: April 30, 2007

B.M.	13-027 W. side Main St. on the grounds of the North End Treatment Plant, 10m E. of line of most Ely. wall & 32.8m S. of most Nly. wall of main bldg. (file to 101) ELEV = 231.761m
01	291-2006 ADDENDUM 3 06/07/12 MAF
00	ISSUED FOR TENDER 06/05/15 FC
NO.	REVISIONS
	DATE BY
	DATE 2006/01/15
	DATE 2006/05/15

EarthTech
 A Tyco International Ltd. Company

DESIGNED BY	GSK	CHECKED BY	KWF
DRAWN BY	FC	APPROVED BY	JEH
SCALE:	HOR: 1:500 VERT: 1:50	RELEASED FOR CONSTRUCTION BY:	K. MARTENS

ENGINEER'S SEAL
 ORIGINAL SIGNED BY
 K.W. FITCHETT
 2006/05/15
 CONSULTANT DRAWING NO.
 C6.01

THE CITY OF WINNIPEG
 WATER AND WASTE DEPARTMENT
 ENGINEERING DIVISION

NEWPCC CENTRATE NUTRIENT TREATMENT
 NITROGEN REMOVAL FACILITY

CIVIL
 LAND DRAINAGE
 PLAN AND PROFILE

CITY FILE NUMBER
 SHEET OF
 CITY DRAWING NUMBER