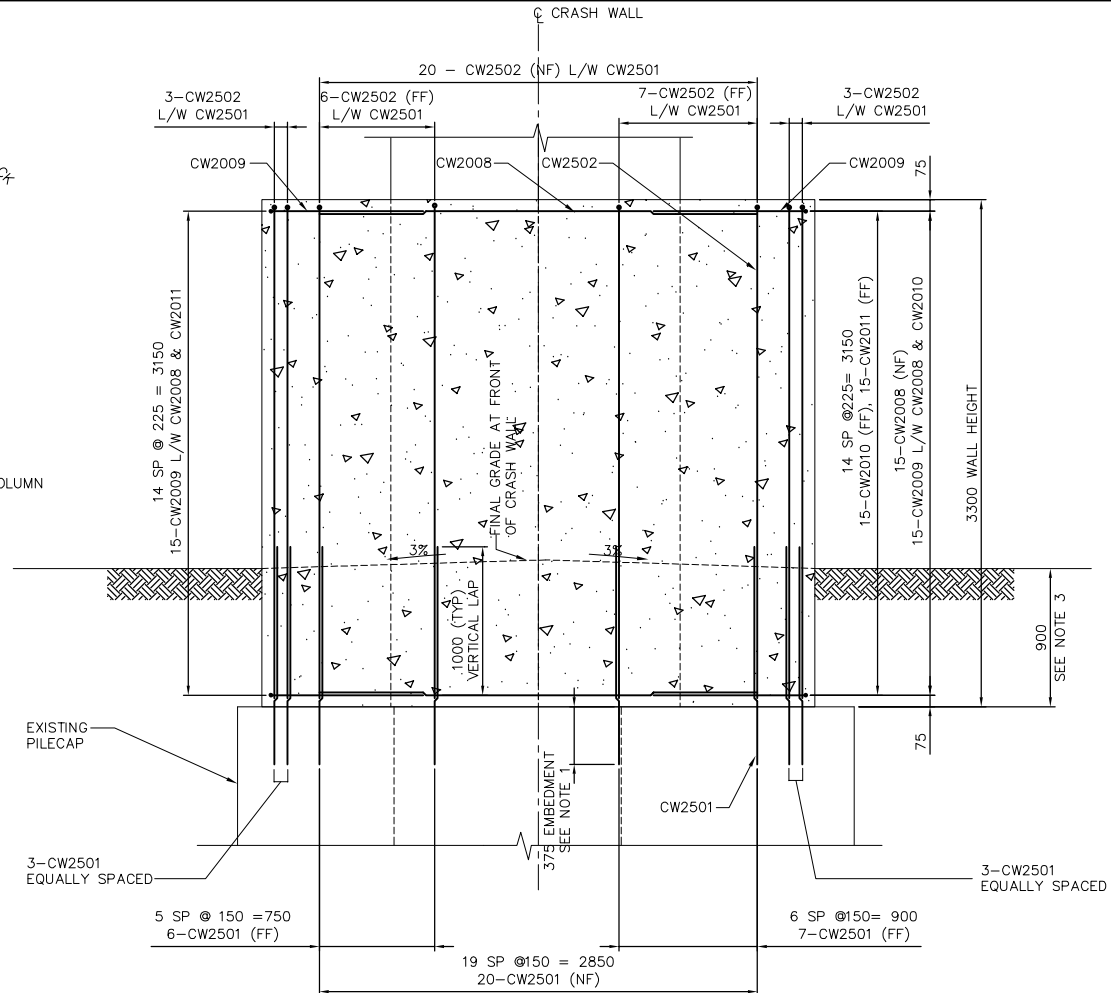
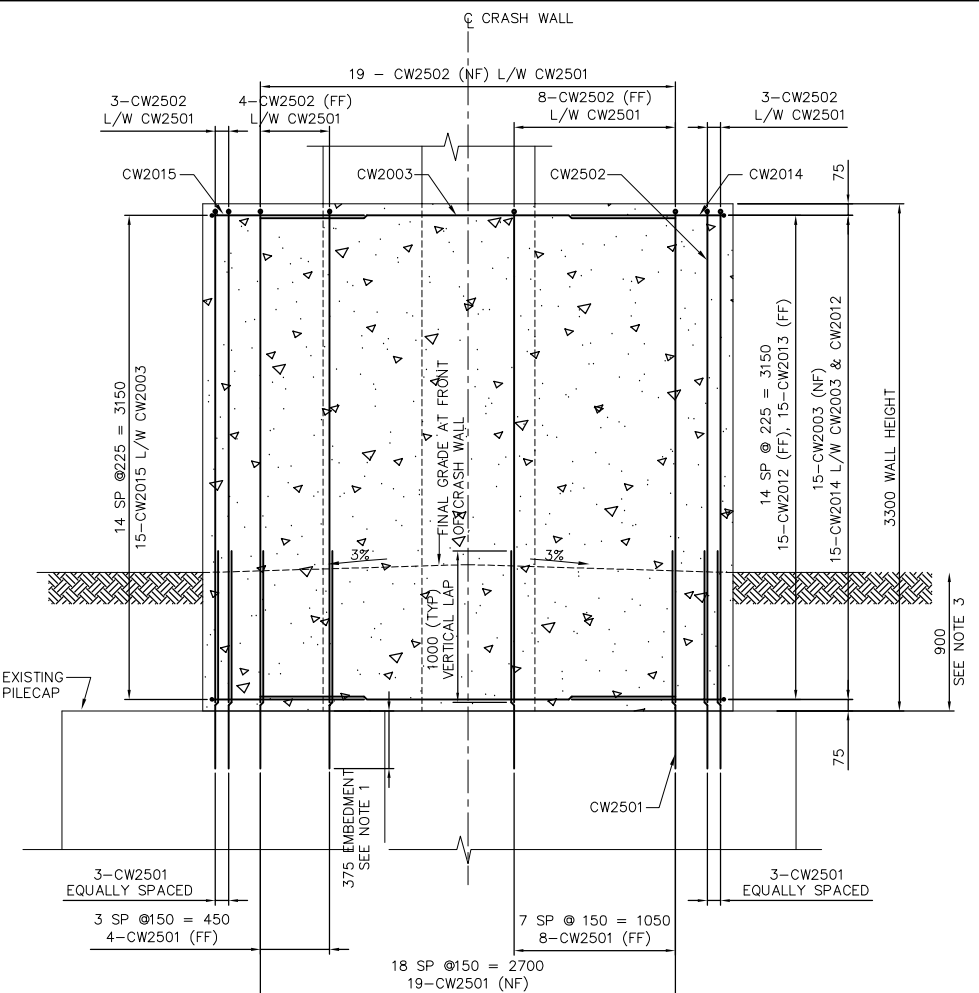


**C** DETAIL  
CT02 SCALE 1:25



**1** SECTION  
CT04 SCALE 1:25



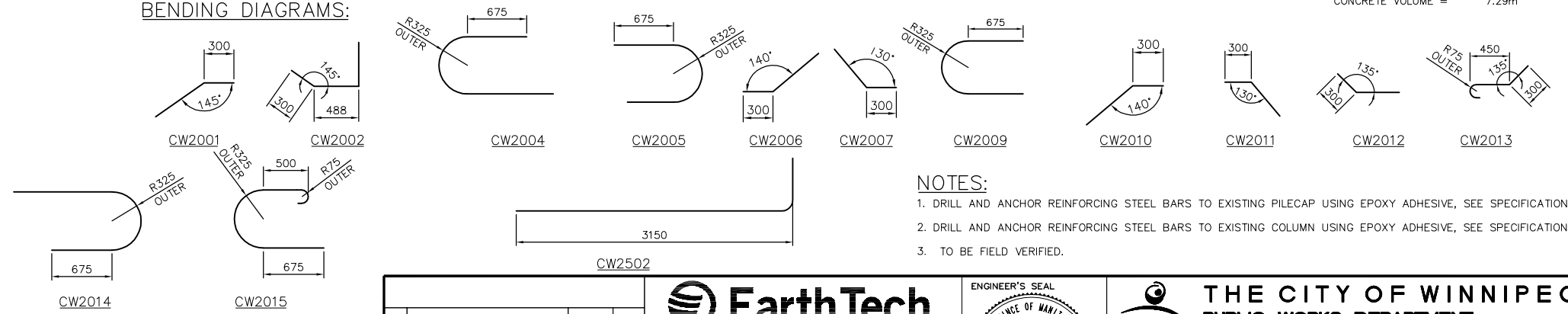
**2** SECTION  
CT04 SCALE 1:25

REINFORCING SCHEDULE PIER 6 - SOUTH COLUMN				
BAR MARK	BAR SIZE	NUMBER OF BARS	BAR LENGTH (mm)	BAR MASS (kg)
CW2008	20M	15	2850	101
CW2009	20M	30	2375	168
CW2010	20M	15	1300	46
CW2011	20M	15	1050	37
CW2501	25M	39	1450	222
CW2502	25M	39	3600	550
TOTAL BAR MASS =				1124 kg
CONCRETE VOLUME =				7.66m <sup>3</sup>

**LEGENDS:**  
 FF - FAR FACE  
 NF - NEAR FACE  
 EF - EACH FACE  
 L/W - LAP WITH

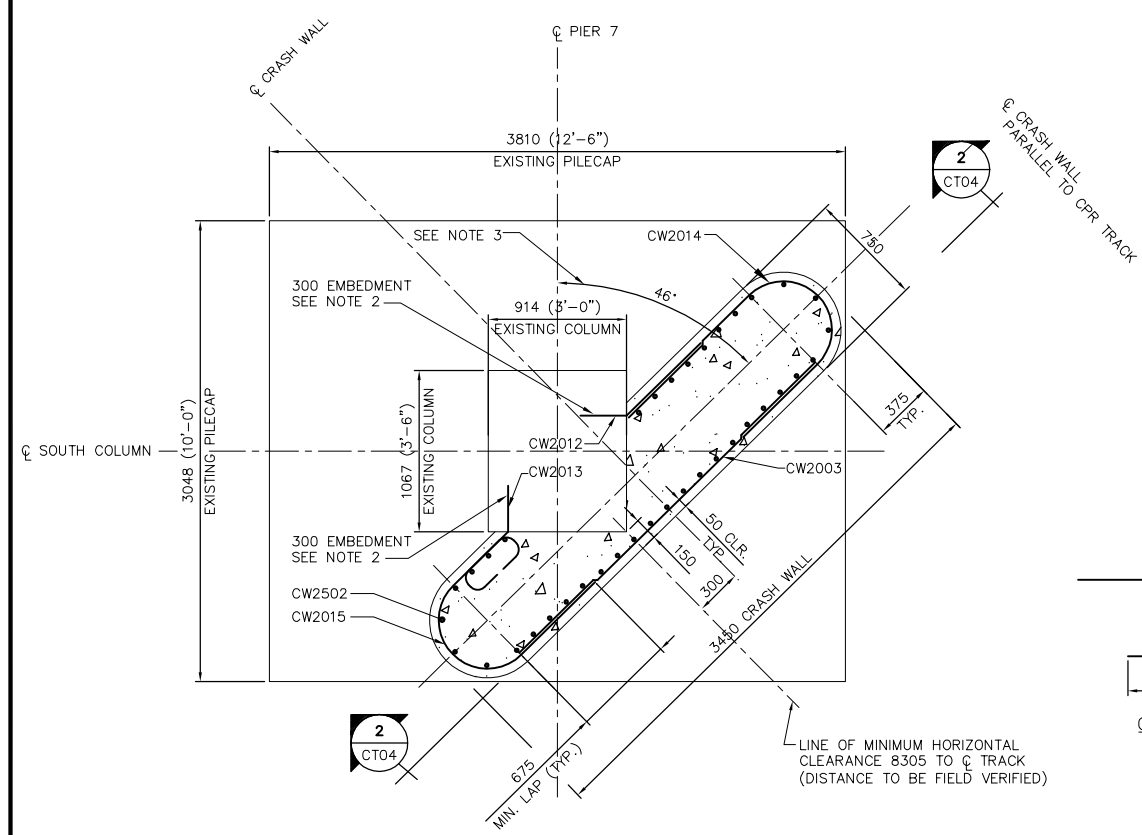
REINFORCING SCHEDULE PIER 7 - SOUTH COLUMN				
BAR MARK	BAR SIZE	NUMBER OF BARS	BAR LENGTH (mm)	BAR MASS (kg)
CW2003	20M	15	2700	95
CW2012	20M	15	1000	35
CW2013	20M	15	1050	37
CW2014	20M	15	2800	99
CW2015	20M	15	2375	84
CW2501	25M	37	1450	210
CW2502	25M	37	3600	522
TOTAL BAR MASS =				1082 kg
CONCRETE VOLUME =				7.29m <sup>3</sup>

**BENDING DIAGRAMS:**



**NOTES:**

- DRILL AND ANCHOR REINFORCING STEEL BARS TO EXISTING PILECAP USING EPOXY ADHESIVE, SEE SPECIFICATIONS.
- DRILL AND ANCHOR REINFORCING STEEL BARS TO EXISTING COLUMN USING EPOXY ADHESIVE, SEE SPECIFICATIONS.
- TO BE FIELD VERIFIED.



**D** DETAIL  
CT02 SCALE 1:25

**APECA**  
 Certificate of Authorization  
 Earth Tech Canada Inc.  
 No. 730 Expiry: April 30, 2007

**HALF-SIZE REDUCTION**

<b>EarthTech</b> A Tyco International Ltd. Company	
DESIGNED BY: AP	CHECKED BY: JEB
DRAWN BY: LD	APPROVED BY:
HOR. SCALE: AS NOTED	RELEASED FOR CONSTRUCTION BY: B. NEIRINCK, P.Eng.
VERTICAL: AS NOTED	
00 ISSUED FOR CONSTRUCTION 06/08/15 JB	
NO. REVISIONS	DATE BY
	DATE 2006/04/12 DATE 2006/08/15

ENGINEER'S SEAL  
 PROVINCE OF MANITOBA  
 ORIGINAL SIGNED BY  
**POCHANART**  
 15/08/06  
 REGISTERED PROFESSIONAL ENGINEER

**THE CITY OF WINNIPEG**  
**PUBLIC WORKS DEPARTMENT**  
**ENGINEERING DIVISION**

**SAFETY IMPROVEMENTS**  
**AT THE NAIRN AVENUE OVERPASS**

BID OPPORTUNITY 281-2006  
 SHEET 4 OF 4

CITY DRAWING NUMBER **B121-06-04**

CRASH WALL DETAILS AND SCHEDULE  
 PIER 6 AND 7 SOUTH COLUMNS