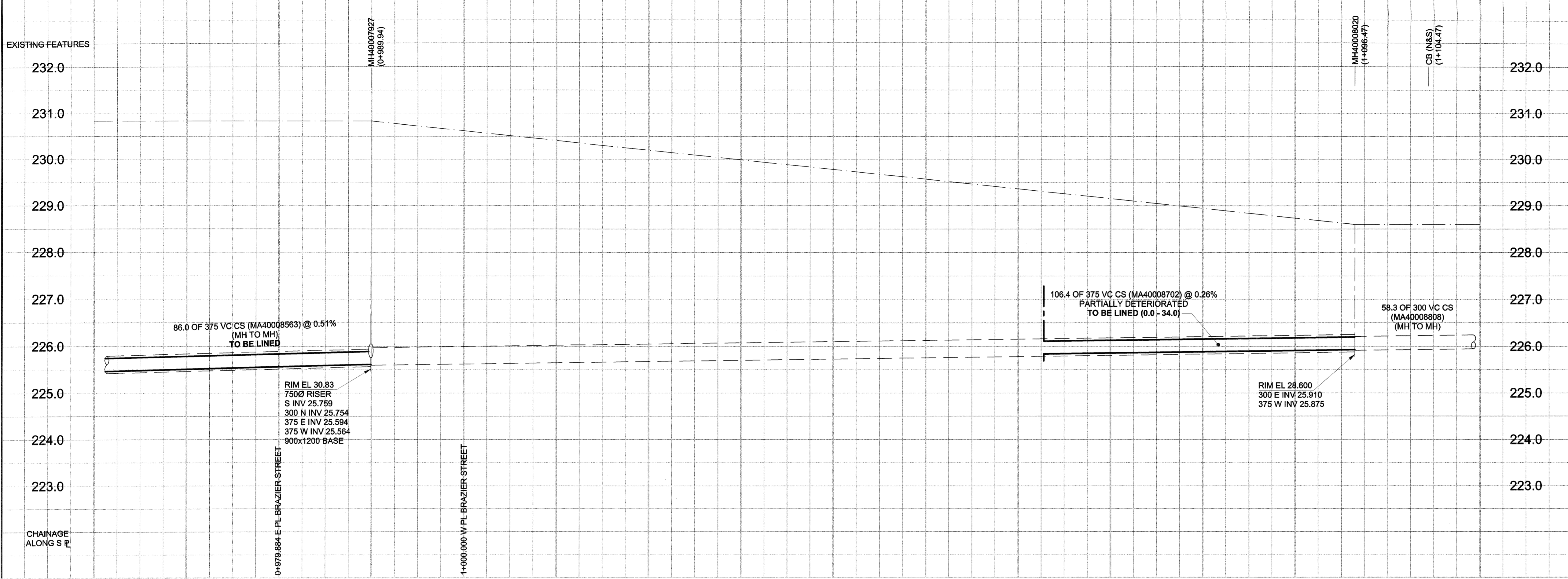


D SIZE 22" x 34" (559mm x 864mm)

PLOT: 06/07/06 2:12:47 PM

UMA FILE NAME: D265-207-01\_01-C-101.5\_RX.dwg Saved By: lberard



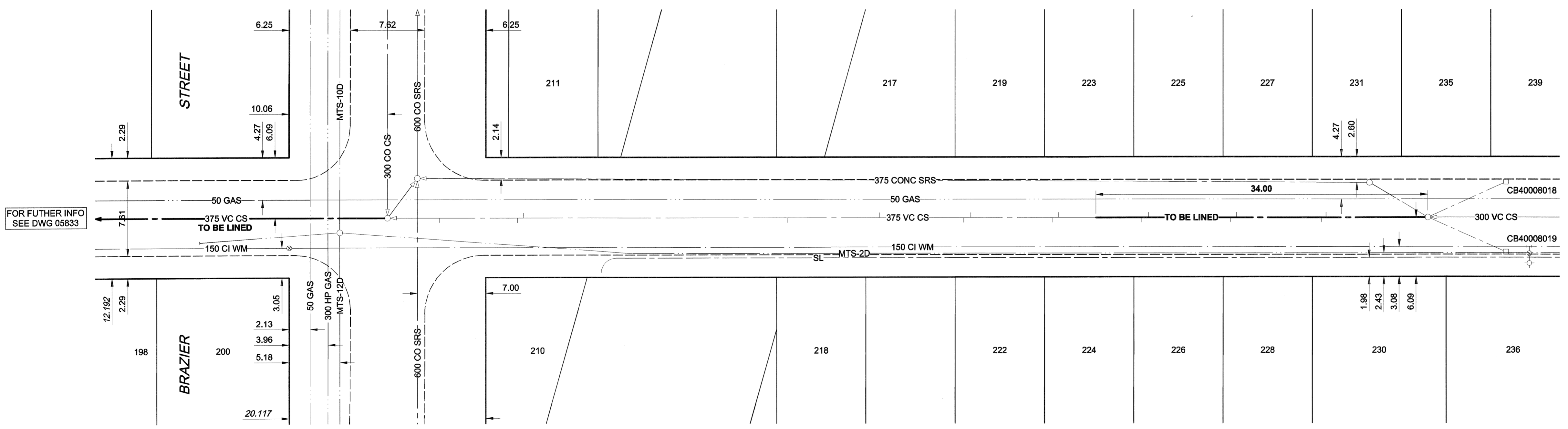
McINTOSH AVENUE



**SEWER JUNCTION INFORMATION\***

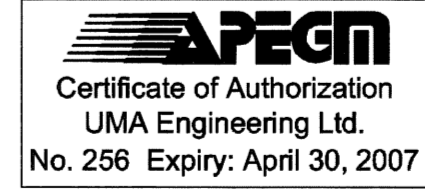
REF. MH	DIST FROM REF. MH	SIZE	CLOCK AT
MH40008020	10.40	1500	02
MH40008020	10.90	1500	10
MH40008020	19.60	1500	02
MH40008020	20.20	1500	11
MH40008020	26.60	1500	01
MH40008020	29.30	1500	10
MH40008020	37.80	1500	01
MH40008020	38.40	1500	11
MH40008020	46.80	1500	01
MH40008020	47.50	1500	11
MH40008020	56.10	1500	01
MH40008020	65.60	1500	10
MH40008020	92.60	1500	01
MH40008020	93.20	1500	11
MH40008020	101.20	1500	11

\*JUNCTION LOCATION FROM VIDEO INSPECTION



**SEWER SERVICE INFORMATION**

ADDRESS	PL TIE (SHORT/LONG)	JUNCTION TIE	REMARKS
210 MCINTOSH AV			NO INFORMATION AVAILABLE
211 MCINTOSH AV			NO INFORMATION AVAILABLE
217 MCINTOSH AV			NO INFORMATION AVAILABLE
218 MCINTOSH AV			NO INFORMATION AVAILABLE
219 MCINTOSH AV			NO INFORMATION AVAILABLE
222 MCINTOSH AV			NO INFORMATION AVAILABLE
223 MCINTOSH AV			NO INFORMATION AVAILABLE
224 MCINTOSH AV			NO INFORMATION AVAILABLE
225 MCINTOSH AV			NO INFORMATION AVAILABLE
226 MCINTOSH AV			NO INFORMATION AVAILABLE
227 MCINTOSH AV			NO INFORMATION AVAILABLE
228 MCINTOSH AV			NO INFORMATION AVAILABLE
230 MCINTOSH AV			NO INFORMATION AVAILABLE
231 MCINTOSH AV			NO INFORMATION AVAILABLE
235 MCINTOSH AV			NO INFORMATION AVAILABLE



**THE CITY OF WINNIPEG**  
**WATER AND WASTE DEPARTMENT**

**2006 COMBINED SEWER RENEWALS**  
**BY CIPP LINING**  
**CONTRACT 16**  
**McINTOSH AVENUE**  
 1ST MH E OF BRAZIER STREET TO MH AT BRAZIER STREET

SHEET 25 OF 28  
 CITY DRAWING NUMBER 05834  
 REV 0

EXISTING	LEGEND - PLAN	NEW	EXISTING	LEGEND - PLAN	NEW	EXISTING	LEGEND - PROFILE	NEW
150 WM	WATERMAIN	150 WM	○	CURB STOP	○	150 WM	—+—	WATERMAIN
○	HYDRANT	○	—○—	REDUCER	—○—	○	—+—	HYDRANT
○	VALVE	○	—X—	COUPLING	—X—	○	—+—	VALVE
300 LDS	LAND DRAINAGE SEWER	300 LDS	—X—	ANODE	—X—	300 LDS	—+—	LAND DRAINAGE SEWER
250 WWS	WASTE WATER SEWER	250 WWS	—X—	HYDRO	—X—	250 WWS	—+—	WASTE WATER SEWER
○	MANHOLE	○	—○—	MTS	—○—	○	—+—	PAVEMENT CROWN
□	CATCH BASIN	□	—○—	GAS	—○—	○	—+—	N/W PROPERTY LINE
△	CURB INLET	△	—○—	TESTHOLE	—○—	○	—+—	S/E PROPERTY LINE
—○—	CULVERT	—○—	—○—	LAMP STANDARD	—○—	○	—+—	N/W GUTTER
—○—	PIPE ABANDONMENTS	—○—	—○—	TREE	—○—	○	—+—	S/E GUTTER
+	SURVEY BAR	+	—○—		—○—	○	—+—	

**LOCATION APPROVED**  
 UNDERGROUND STRUCTURES

SUPR. LIG STRUCTURES COMMITTEE DATE

**NOTE:**  
 LOCATION OF UNDERGROUND STRUCTURES AS SHOWN ARE BASED ON THE BEST INFORMATION AVAILABLE. BUT NO GUARANTEE IS GIVEN THAT ALL EXISTING UTILITIES ARE SHOWN OR THAT THE GIVEN LOCATIONS ARE EXACT. CONFIRMATION OF EXISTENCE AND EXACT LOCATION OF ALL SERVICES MUST BE OBTAINED FROM THE INDIVIDUAL UTILITIES BEFORE PROCEEDING WITH CONSTRUCTION.

NO.	REVISIONS	DATE	BY
0	ISSUED FOR CONSTRUCTION	06/07/06	KMB
		YYMMDD	

UMA | AECOM

© 2006 UMA ENGINEERING LTD. ALL RIGHTS RESERVED.

DESIGNED BY: MJR  
 CHECKED BY: [Signature]  
 DRAWN BY: KMB  
 APPROVED BY: [Signature]  
 HOR. SCALE: 1:250  
 VERT. SCALE: [Signature]  
 DATE: 06/07/07

PROFESSIONAL'S SEAL  
 C. C. MACEY  
 REGISTERED ENGINEER  
 CONSULTANT DRAWING NO. 25  
 D265-207-01

BID OPPORTUNITY NO. 273-2006