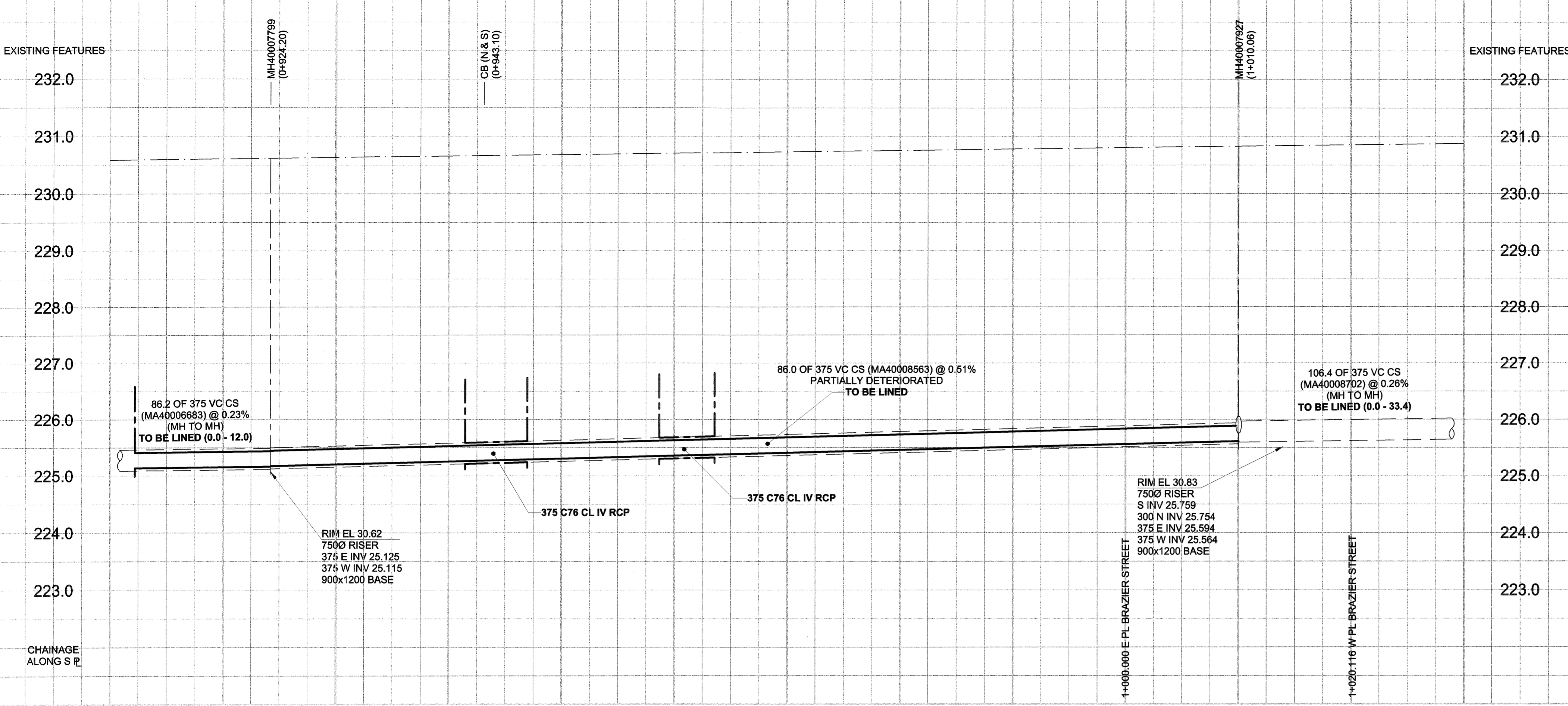
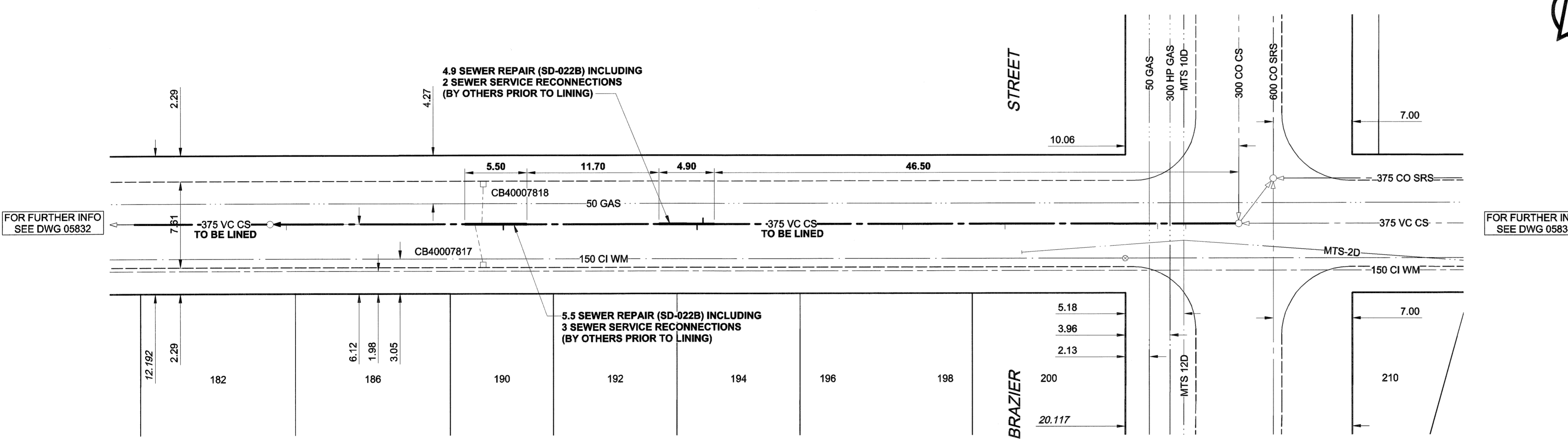


D SIZE 22" x 34" (559mm x 864mm) PLOT: 06/07/08 2:33:16 PM UMA FILE NAME: D265-207-01_01-C-1014_EX.dwg Saved By: libbard



McINTOSH AVENUE



SEWER JUNCTION INFORMATION*

REF. MH	DIST FROM REF. MH	SIZE	CLOCK AT
MH40007927	4.70	150Ø	11
MH40007927	7.20	150Ø	11
MH40007927	20.70	150Ø	11
MH40007927	29.80	150Ø	11
MH40007927	47.50	150Ø	01
MH40007927	48.00	150Ø	11
MH40007927	65.20	150Ø	11
MH40007927	67.10	200Ø	02
MH40007927	67.70	200Ø	10
MH40007927	84.40	150Ø	11

*JUNCTION LOCATION FROM VIDEO INSPECTION

SEWER SERVICE INFORMATION

ADDRESS	PL TIE (SHORT/LONG)	JUNCTION TIE	REMARKS
182 MCINTOSH AV			NO INFORMATION AVAILABLE
186 MCINTOSH AV			NO INFORMATION AVAILABLE
190 MCINTOSH AV			NO INFORMATION AVAILABLE
192 MCINTOSH AV			NO INFORMATION AVAILABLE
194 MCINTOSH AV			NO INFORMATION AVAILABLE
196 MCINTOSH AV			NO INFORMATION AVAILABLE
198 MCINTOSH AV			NO INFORMATION AVAILABLE
200 MCINTOSH AV			NO INFORMATION AVAILABLE

WARNING
 IF POWER EQUIPMENT OR EXPLOSIVES ARE TO BE USED FOR EXCAVATION ON THIS PROJECT, THE CONTRACTOR MUST:
 1) NOTIFY THE GAS COMPANY OF THE PROPOSED LOCATION OF EXCAVATION.
 2) TAKE PRECAUTION TO AVOID DAMAGE TO GAS COMPANY INSTALLATIONS.
 SEE PROVINCIAL REGULATION 140/92 FOR DETAILS

EXISTING	LEGEND - PLAN	NEW	EXISTING	LEGEND - PLAN	NEW	EXISTING	LEGEND - PROFILE	NEW
150 WM	WATERMAIN	150 WM	○	CURB STOP	⬮	150 WM	WATERMAIN	150 WM
○	HYDRANT	⬮	⬮	REDUCER	⬮	○	HYDRANT	⬮
○	VALVE	○	⬮	COUPLING	⬮	⬮	VALVE	⬮
300 LDS	LAND DRAINAGE SEWER	300 LDS	⬮	ANODE	⬮	300 LDS	LAND DRAINAGE SEWER	300 LDS
250 WWS	WASTE WATER SEWER	250 WWS	⬮	HYDRO	⬮	250 WWS	WASTE WATER SEWER	250 WWS
○	MANHOLE	●	○	MTS	○	○	PAVEMENT CROWN	○
□	CATCH BASIN	■	○	GAS	○	○	N/W PROPERTY LINE	○
△	CURB INLET	▲	○	TESTHOLE	○	○	S/E PROPERTY LINE	○
⬮	CULVERT	⬮	○	LAMP STANDARD	○	○	N/W GUTTER	○
⬮	PIPE ABANDONMENTS	⬮	○	TREE	○	○	S/E GUTTER	○
⬮	SURVEY BAR	⬮						

LOCATION APPROVED
 UNDERGROUND STRUCTURES

SUPR. U/G STRUCTURES COMMITTEE DATE

NOTE:
 LOCATION OF UNDERGROUND STRUCTURES AS SHOWN ARE BASED ON THE BEST INFORMATION AVAILABLE. BUT NO GUARANTEE IS GIVEN THAT ALL EXISTING UTILITIES ARE SHOWN OR THAT THE GIVEN LOCATIONS ARE EXACT. CONFIRMATION OF EXISTENCE AND EXACT LOCATION OF ALL SERVICES MUST BE OBTAINED FROM THE INDIVIDUAL UTILITIES BEFORE PROCEEDING WITH CONSTRUCTION.

NO.	REVISIONS	YYMMDD	BY
0	ISSUED FOR CONSTRUCTION	06/07/06	KMB

UMA | AECOM

© 2006 UMA ENGINEERING LTD. ALL RIGHTS RESERVED.

DESIGNED BY	MJR	CHECKED BY	<i>A. Deland</i>
DRAWN BY	KMB	APPROVED BY	<i>Raymond Libbard</i>
HOR. SCALE	1:250	RELEASED FOR CONSTRUCTION	<i>Raymond Libbard</i>
VERT. SCALE	1:50	DATE	06/07/07

APEGM
 Certificate of Authorization
 UMA Engineering Ltd.
 No. 256 Expiry: April 30, 2007

PROFESSIONAL'S SEAL
 PROVINCE OF MANITOBA
 07 July 2006
C. C. MACEY
 REGISTERED ENGINEER
 CONSULTANT DRAWING NO. 24
 D265-207-01

THE CITY OF WINNIPEG
 WATER AND WASTE DEPARTMENT

2006 COMBINED SEWER RENEWALS
 BY CIPP LINING
 CONTRACT 16
 McINTOSH AVENUE
 MH AT BRAZIER STREET
 TO 1ST MH W OF BRAZIER STREET

SHEET 24 OF 28
 CITY DRAWING NUMBER
05833
 REV 0

BID OPPORTUNITY NO. 273-2006