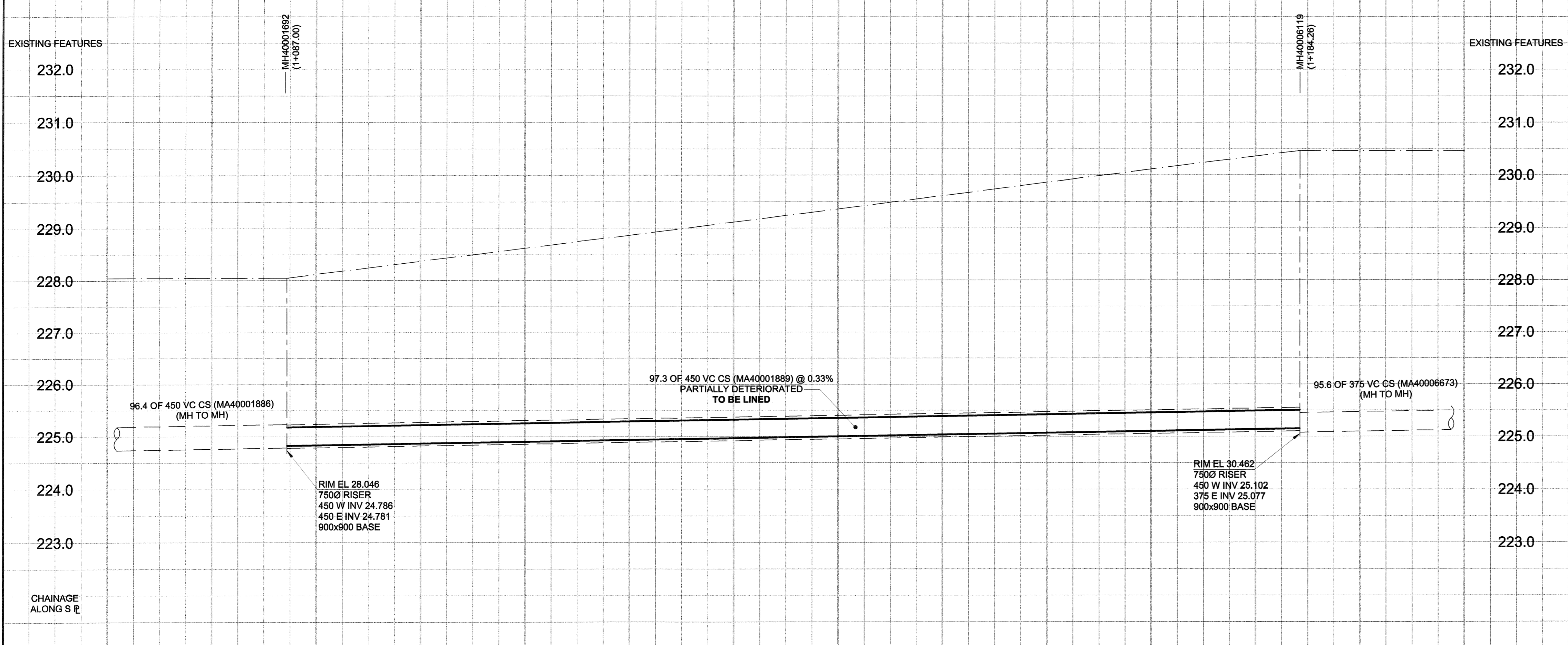


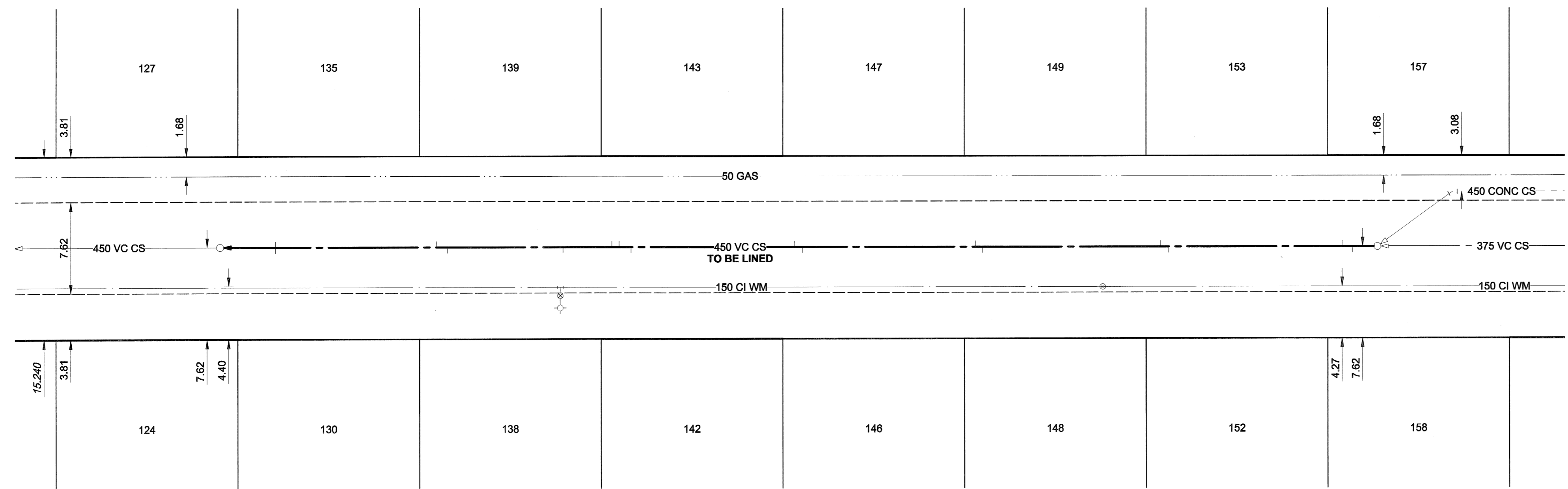
D SIZE 22" x 34" 659mm x 864mm

PLOT: 06/07/06 2:40:20 PM

UMA FILE NAME: D265-207-01\_01-C-1010\_RX.dwg Saved By: lberard



LEIGHTON AVENUE



**SEWER JUNCTION INFORMATION\***

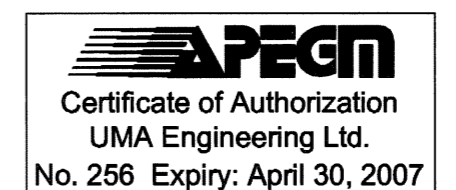
REF. MH	DIST FROM REF. MH	SIZE	CLOCK AT
MH40006119	2.10	2000	10
MH40006119	2.90	1500	01
MH40006119	17.50	1500	11
MH40006119	18.20	1500	01
MH40006119	33.10	1500	11
MH40006119	33.70	1500	01
MH40006119	48.20	1500	11
MH40006119	48.90	1500	01
MH40006119	62.60	1500	11
MH40006119	63.60	1500	01
MH40006119	64.20	1500	01
MH40006119	66.30	1500	11
MH40006119	78.00	2000	11
MH40006119	78.90	1500	01
MH40006119	92.40	1500	01
MH40006119	92.40	1500	11

\*JUNCTION LOCATIONS FROM VIDEO INSPECTION

**SEWER SERVICE INFORMATION**

ADDRESS	PL	TIE (SHORT/LONG)	JUNCTION TIE	REMARKS
130 LEIGHTON AV				NO INFORMATION AVAILABLE
135 LEIGHTON AV				NO INFORMATION AVAILABLE
138 LEIGHTON AV				NO INFORMATION AVAILABLE
139 LEIGHTON AV				NO INFORMATION AVAILABLE
142 LEIGHTON AV				NO INFORMATION AVAILABLE
143 LEIGHTON AV				NO INFORMATION AVAILABLE
146 LEIGHTON AV				NO INFORMATION AVAILABLE
147 LEIGHTON AV				NO INFORMATION AVAILABLE
148 LEIGHTON AV				NO INFORMATION AVAILABLE
149 LEIGHTON AV				NO INFORMATION AVAILABLE
152 LEIGHTON AV				NO INFORMATION AVAILABLE
153 LEIGHTON AV				NO INFORMATION AVAILABLE
157 LEIGHTON AV				NO INFORMATION AVAILABLE
158 LEIGHTON AV				NO INFORMATION AVAILABLE

**WARNING**  
 IF POWER EQUIPMENT OR EXPLOSIVES ARE TO BE USED FOR EXCAVATION ON THIS PROJECT, THE CONTRACTOR MUST:  
 1) NOTIFY THE GAS COMPANY OF THE PROPOSED LOCATION OF EXCAVATION.  
 2) TAKE PRECAUTION TO AVOID DAMAGE TO GAS COMPANY INSTALLATIONS.  
 SEE PROVINCIAL REGULATION 140/92 FOR DETAILS



BID OPPORTUNITY NO. 273-2006

150 WM	WATERMAIN	150 WM	EXISTING	LEGEND - PLAN	NEW	EXISTING	LEGEND - PROFILE	NEW
	HYDRANT							
	VALVE							
	LAND DRAINAGE SEWER							
	WASTE WATER SEWER							
	MANHOLE							
	CATCH BASIN							
	CURB INLET							
	CULVERT							
	PIPE ABANDONMENTS							
	SURVEY BAR							

**LOCATION APPROVED UNDERGROUND STRUCTURES**

BM 12-010 ELEV 230.101m

N.W. Henderson Hwy. & Leighton Ave., in median Tbl. in 7.6m Conc. pile, 14.3m E. of W.L. of Henderson Hwy. & 19.3m N. of the straight production Ely. of the N.L. of Leighton Ave. & 0.3m B.G.L.

© 2006 UMA ENGINEERING LTD. ALL RIGHTS RESERVED.

DESIGNED BY MJR  
 CHECKED BY A. Delami  
 DRAWN BY KMB  
 APPROVED BY [Signature]  
 HOR. SCALE 1:250  
 VERT. SCALE 1:50  
 DATE 06/07/07

ISSUED FOR CONSTRUCTION 06/07/06 KMB

NO. REVISIONS YYMMDD BY

NOTE: LOCATION OF UNDERGROUND STRUCTURES AS SHOWN ARE BASED ON THE BEST INFORMATION AVAILABLE. BUT NO GUARANTEE IS GIVEN THAT ALL EXISTING UTILITIES ARE SHOWN OR THAT THE GIVEN LOCATIONS ARE EXACT. CONFIRMATION OF EXISTENCE AND EXACT LOCATION OF ALL SERVICES MUST BE OBTAINED FROM THE INDIVIDUAL UTILITIES BEFORE PROCEEDING WITH CONSTRUCTION.

UMA | AECOM

© 2006 UMA ENGINEERING LTD. ALL RIGHTS RESERVED.

DESIGNED BY MJR  
 CHECKED BY A. Delami  
 DRAWN BY KMB  
 APPROVED BY [Signature]  
 HOR. SCALE 1:250  
 VERT. SCALE 1:50  
 DATE 06/07/07

PROFESSIONAL'S SEAL

PROVINCE OF MANITOBA

07 July 2006

C.C. MACEY

REGISTERED ENGINEER

CONSULTANT DRAWING NO. 20  
 D265-207-01

**THE CITY OF WINNIPEG WATER AND WASTE DEPARTMENT**

2006 COMBINED SEWER RENEWALS  
 BY CIPP LINING  
 CONTRACT 16  
 LEIGHTON AVENUE  
 2ND MH W OF HENDERSON HIGHWAY  
 TO 3RD MH W OF HENDERSON HIGHWAY

SHEET 20 OF 28  
 CITY DRAWING NUMBER 05829  
 REV 0