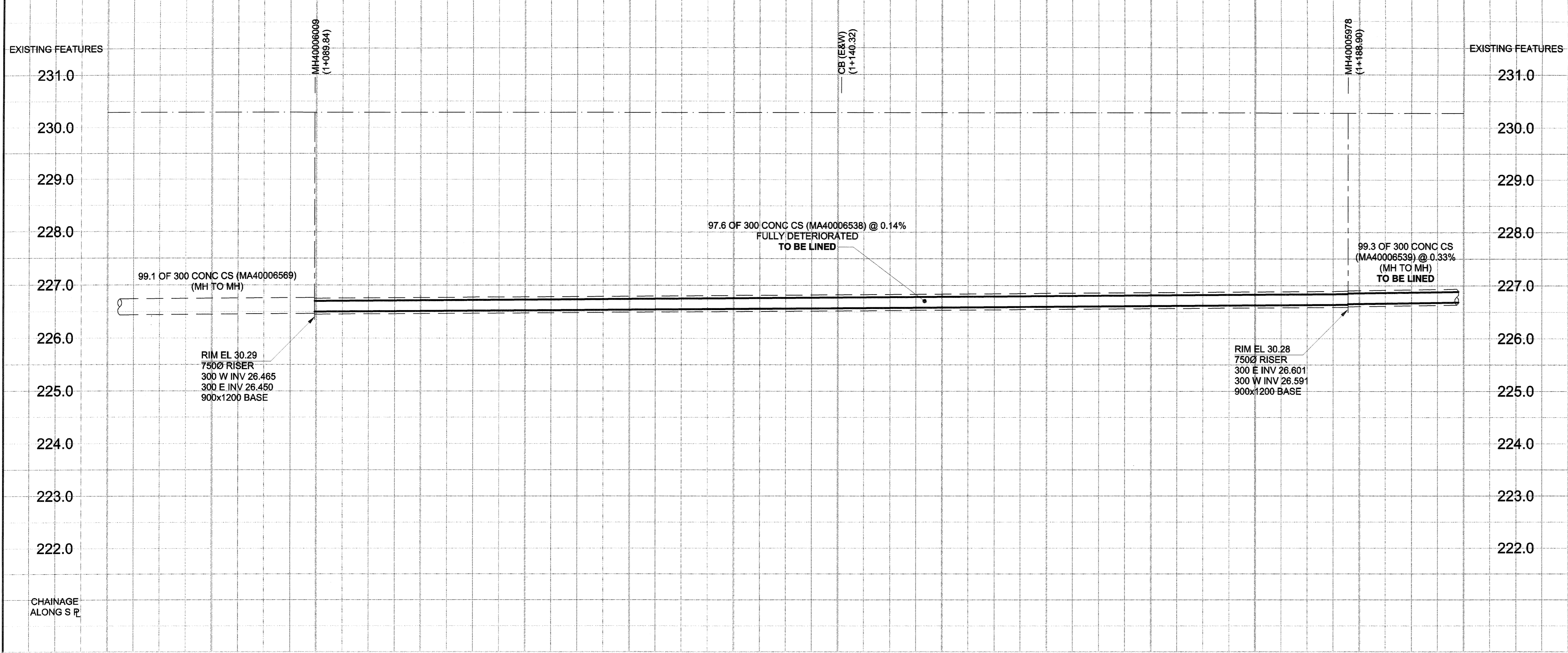


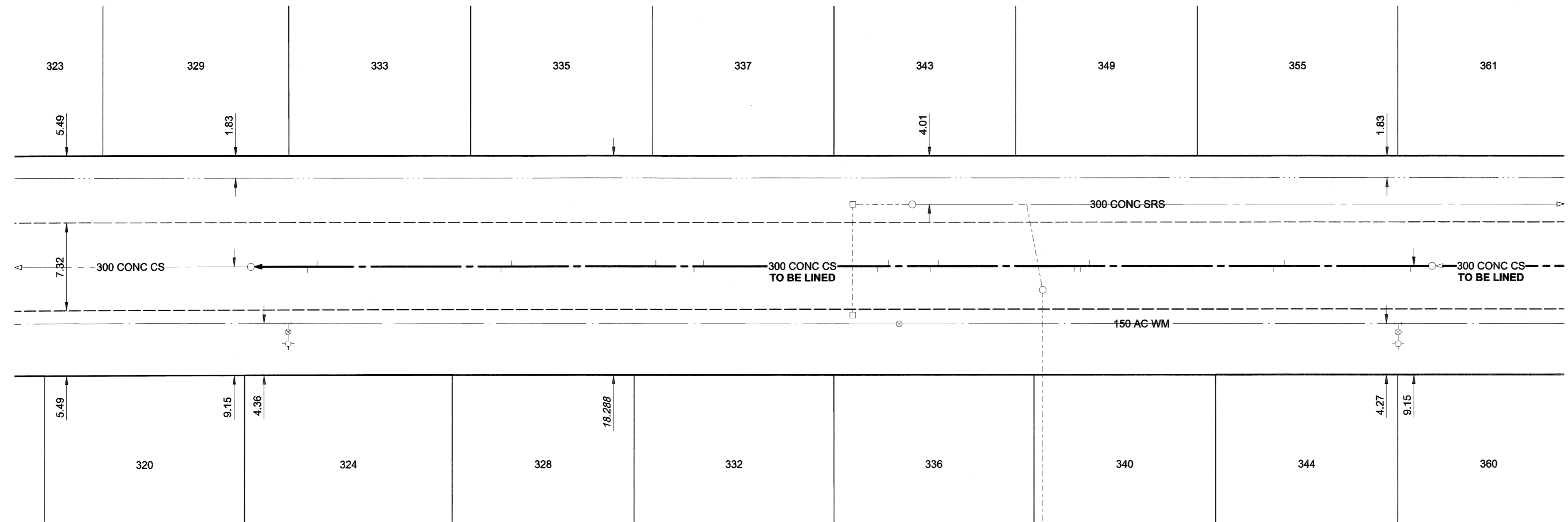
D SIZE 22" x 34" (599mm x 864mm)

PLOT: 06/07/08 2:13:27 PM

UMA FILE NAME: D265-207-01\_01-C-1008 EX.dwg Saved By: lberard



### HELMSDALE AVENUE



FOR FURTHER INFO SEE DWG 05828

**SEWER JUNCTION INFORMATION\***

REF. MH	DIST FROM REF. MH	SIZE	CLOCK AT
MH40005978	1.80	150Ø	11
MH40005978	12.40	150Ø	01
MH40005978	13.30	150Ø	10
MH40005978	28.70	150Ø	03
MH40005978	29.50	150Ø	10
MH40005978	30.00	150Ø	11
MH40005978	41.40	150Ø	02
MH40005978	42.10	150Ø	11
MH40005978	45.60	150Ø	03
MH40005978	46.50	150Ø	10
MH40005978	61.10	150Ø	02
MH40005978	61.90	150Ø	09
MH40005978	65.10	150Ø	01
MH40005978	77.20	150Ø	02
MH40005978	78.10	150Ø	09
MH40005978	93.50	150Ø	02
MH40005978	94.30	150Ø	11

\*JUNCTION INFORMATION FROM VIDEO INSPECTION

**SEWER SERVICE INFORMATION**

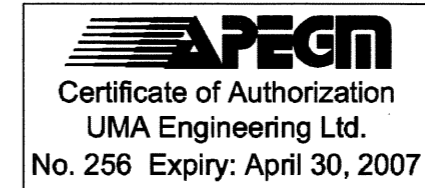
ADDRESS	PL TIE (SHORT/LONG)	JUNCTION TIE	REMARKS
324 HELMSDALE AV			NO INFORMATION AVAILABLE
328 HELMSDALE AV			NO INFORMATION AVAILABLE
332 HELMSDALE AV			NO INFORMATION AVAILABLE
333 HELMSDALE AV			NO INFORMATION AVAILABLE
335 HELMSDALE AV			NO INFORMATION AVAILABLE
336 HELMSDALE AV			NO INFORMATION AVAILABLE
337 HELMSDALE AV			NO INFORMATION AVAILABLE
340 HELMSDALE AV			NO INFORMATION AVAILABLE
343 HELMSDALE AV			NO INFORMATION AVAILABLE
344 HELMSDALE AV			NO INFORMATION AVAILABLE
349 HELMSDALE AV			NO INFORMATION AVAILABLE
355 HELMSDALE AV			NO INFORMATION AVAILABLE

**WARNING**

IF POWER EQUIPMENT OR EXPLOSIVES ARE TO BE USED FOR EXCAVATION ON THIS PROJECT, THE CONTRACTOR MUST:

- 1) NOTIFY THE GAS COMPANY OF THE PROPOSED LOCATION OF EXCAVATION.
- 2) TAKE PRECAUTION TO AVOID DAMAGE TO GAS COMPANY INSTALLATIONS.

SEE PROVINCIAL REGULATION 140/92 FOR DETAILS



BID OPPORTUNITY NO. 273-2006

150 WM	WATERMAIN	150 WM	EXISTING	LEGEND - PLAN	NEW	EXISTING	LEGEND - PROFILE	NEW
	HYDRANT							
	VALVE							
	LAND DRAINAGE SEWER							
	WASTE WATER SEWER							
	MANHOLE							
	CATCH BASIN							
	CURB INLET							
	CULVERT							
	PIPE ABANDONMENTS							
	SURVEY BAR							
	CURB STOP							
	REDUCER							
	COUPLING							
	ANODE							
	HYDRO							
	MTS							
	GAS							
	TESTHOLE							
	LAMP STANDARD							
	TREE							

**LOCATION APPROVED UNDERGROUND STRUCTURES**

SUPR. U/G STRUCTURES DATE COMMITTEE

NOTE: LOCATION OF UNDERGROUND STRUCTURES AS SHOWN ARE BASED ON THE BEST INFORMATION AVAILABLE. BUT NO GUARANTEE IS GIVEN THAT ALL EXISTING UTILITIES ARE SHOWN OR THAT THE GIVEN LOCATIONS ARE EXACT. CONFIRMATION OF EXISTENCE AND EXACT LOCATION OF ALL SERVICES MUST BE OBTAINED FROM THE INDIVIDUAL UTILITIES BEFORE PROCEEDING WITH CONSTRUCTION.

NO.	ISSUED FOR CONSTRUCTION	DATE	BY
0	ISSUED FOR CONSTRUCTION	06/07/08	KMB
	REVISIONS	YYMMDD	BY

DESIGNED BY	DRAWN BY	HOR. SCALE	VERT. SCALE	DATE
MJR	KMB	1:250	1:50	06/07/07

PROFESSIONAL'S SEAL

PROVINCE OF MANITOBA

07 July 2006

C. C. MACEY

REGISTERED ENGINEER

CONSULTANT DRAWING NO. 18

D265-207-01

**THE CITY OF WINNIPEG WATER AND WASTE DEPARTMENT**

**2006 COMBINED SEWER RENEWALS BY CIPP LINING CONTRACT 16**

**HELMSDALE AVENUE**

1ST MH W OF ROCH STREET TO 2ND MH W OF ROCH STREET

SHEET 18 OF 28

CITY DRAWING NUMBER **05827**

REV 0