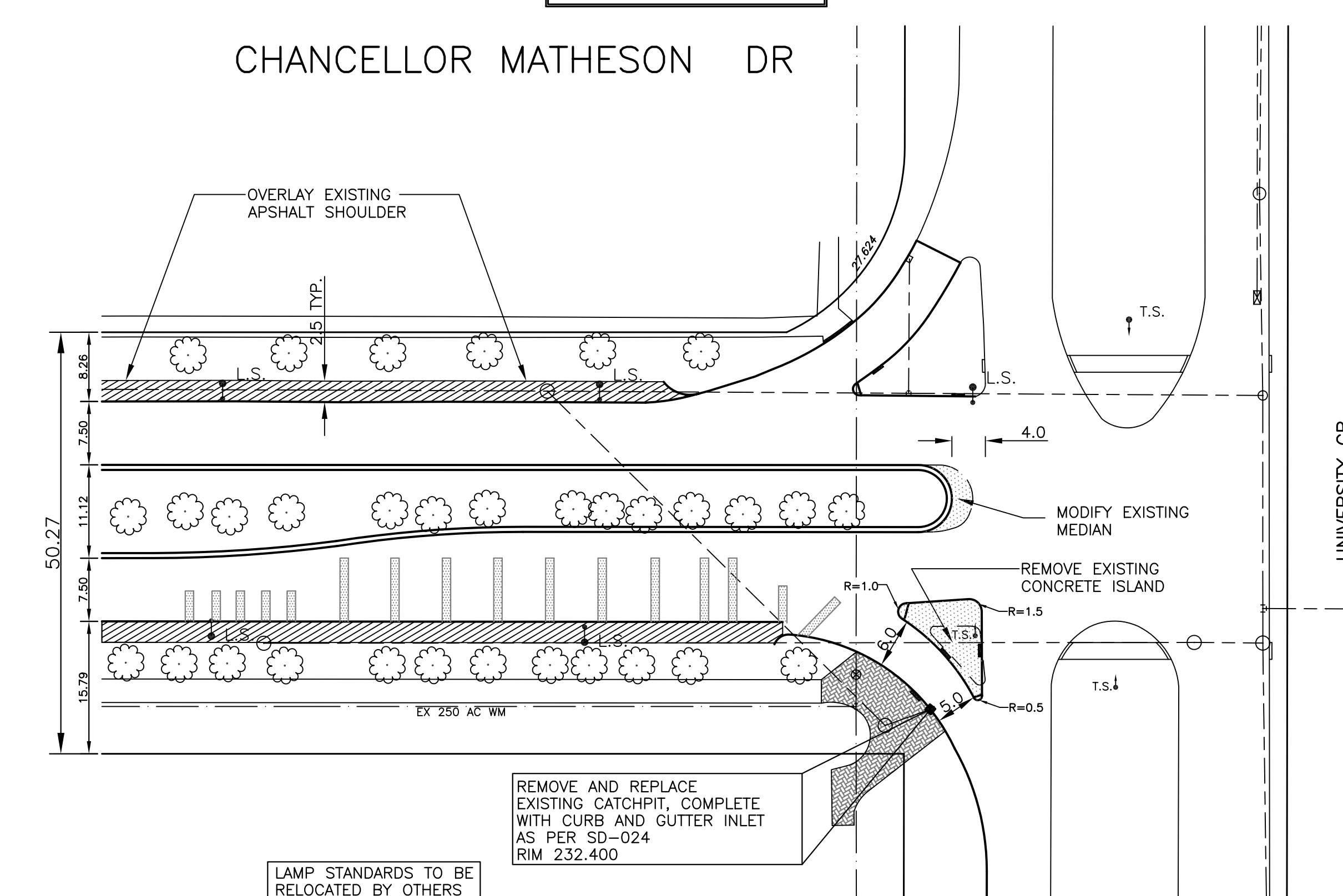
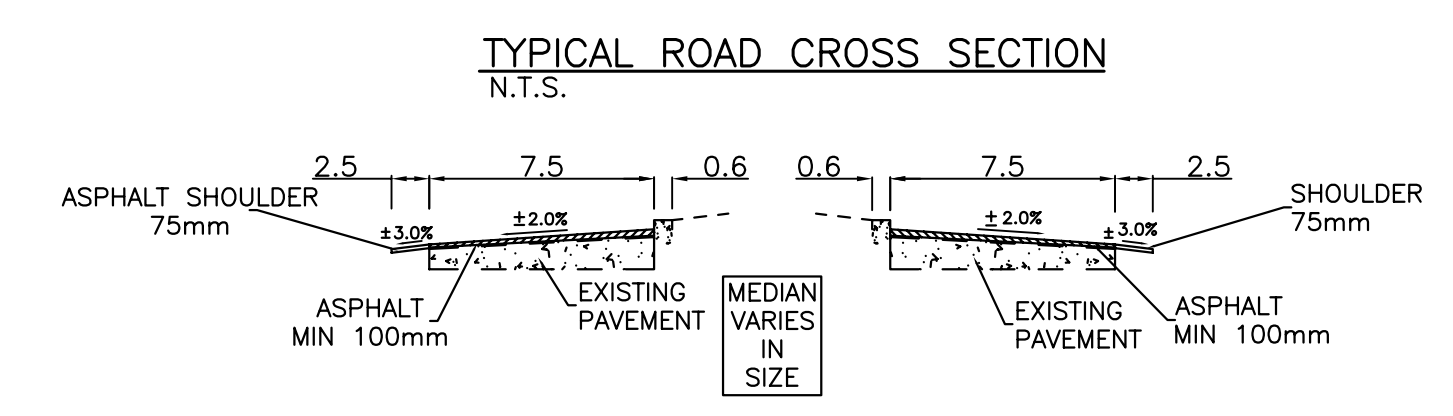


- NOTES:**
- REMOVE EX. BARRIER CURB, INSTALL NEW 600mm SPLASH STRIP WITH 150mm INTEGRAL BARRIER CURB
 - FINAL CURB REVEAL TO BE 150mm
 - EXISTING GRANULAR SHOULDERS TO BE EXCAVATED AND RENEW WITH 150mm GRANULAR BASE AND 75mm ASPHALT AS DIRECTED
 - EXISTING ASPHALT TO BE PLANED AS DIRECTED NOT ALL AREAS WILL REQUIRE PLANING
 - ASPHALT OVERLAY MINIMUM THICKNESS 100mm OR AS DIRECTED.
 - CONCRETE JOINT REPAIRS AS DIRECTED.
 - RENEW EXISTING BULLNOSES AS DIRECTED



METRIC
WHOLE NUMBERS INDICATE MILLIMETRES
DECIMALIZED NUMBERS INDICATE METRES

---	WATERMAIN	---	HYDRO	---	150mm W.M.	---	WATERMAIN	---	150mm W.M.
⊕	HYDRANT VALVE	⊕	M.T.S.	---	300mm L.D.S.	---	VALVE	---	300mm L.D.S.
---	LAND DRAINAGE SEWER	---	CONCRETE ASPHALT	---	250mm W.W.S.	---	LAND DRAINAGE SEWER	---	250mm W.W.S.
---	WASTE WATER SEWER	---	PROPERTY LINE	---	---	---	WASTE WATER SEWER	---	---
○	MANHOLE	⊕	SURVEY BAR	---	---	---	CENTERLINE	---	---
□	CATCH BASIN	⊕	CURB STOP	---	---	---	NORTH & WEST GUTTER	---	---
△	CURB INLET	▲	C.B. LEAD	---	---	---	SOUTH & EAST GUTTER	---	---
---	JUNCTIONS	---	SIDEWALK	---	---	---	---	---	---
---	CULVERT	---	SIDEWALK RAMP	---	---	---	---	---	---
---	GAS	---	ELEVATIONS	---	(32.550)	---	---	---	---
---	EXISTING LEGEND - PLAN	---	PROPOSED	---	---	---	EXISTING LEGEND - PROFILE	---	PROPOSED

LOCATION APPROVED UNDERGROUND STRUCTURES

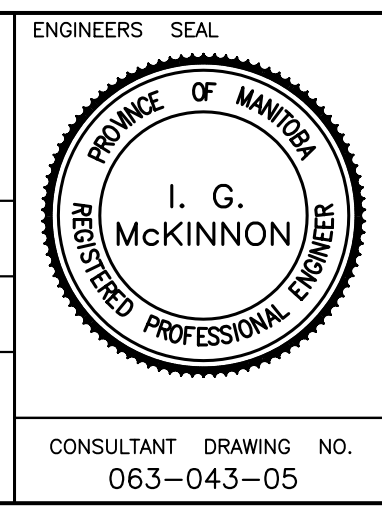
SUPV. U/G STRUCTURES DATE COMMITTEE

NOTE:
LOCATION OF UNDERGROUND STRUCTURES AS SHOWN ARE BASED ON THE BEST INFORMATION AVAILABLE BUT NO GUARANTEE IS GIVEN THAT ALL EXISTING UTILITIES ARE SHOWN OR THAT THE GIVEN LOCATIONS ARE EXACT. CONFIRMATION OF EXISTENCE AND EXACT LOCATION OF ALL SERVICES MUST BE OBTAINED FROM THE INDIVIDUAL UTILITIES BEFORE PROCEEDING WITH CONSTRUCTION.

B.M. ELEV.	
NO. REVISIONS	DATE BY

SEG ENGINEERING INC.
200 TACHE AVENUE WINNIPEG, MANITOBA (204) 233-2113

DESIGNED BY R.H. CHECKED BY S.M.
DRAWN BY R.H. APPROVED BY S.M.
HOR. SCALE: 1:500
VERT. SCALE: 1:10
DATE: APRIL 2006



THE CITY OF WINNIPEG
PUBLIC WORKS DEPARTMENT

2006 REGIONAL STREETS
CHANCELLOR MATHESON DRIVE

FROM STATION 12+75.00 TO UNIVERSITY CRESCENT

CITY DRAWING NO. P-3267-05
SHEET 5 OF 5

266-2006

TRAFFIC SIGNALS AND DETECTION LOOPS TO BE RELOCATED OR INSTALLED BY OTHERS

LAMP STANDARDS TO BE RELOCATED BY OTHERS

REMOVE AND REPLACE EXISTING CATCHPIT, COMPLETE WITH CURB AND GUTTER INLET AS PER SD-024 RIM 232.400