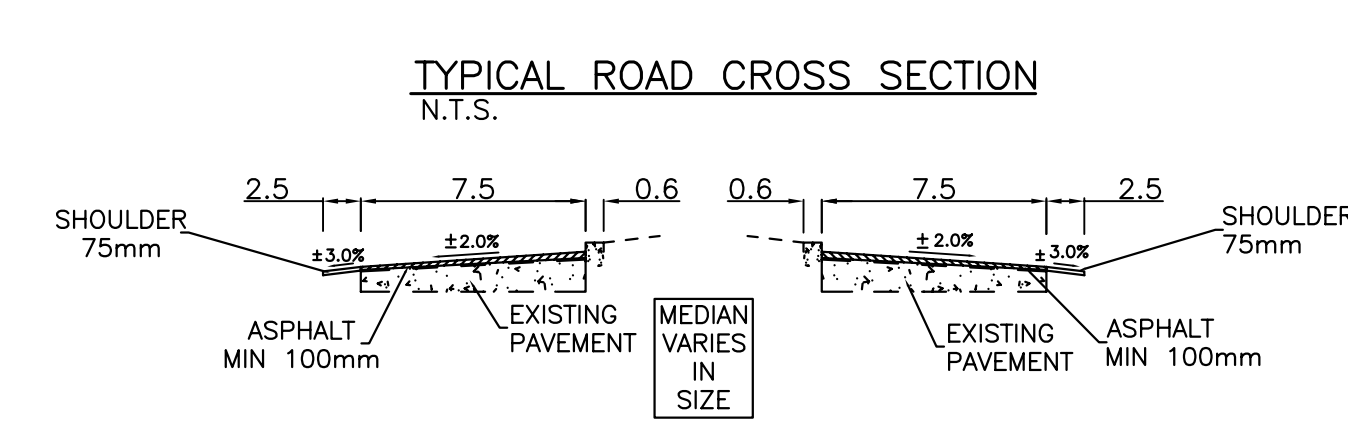
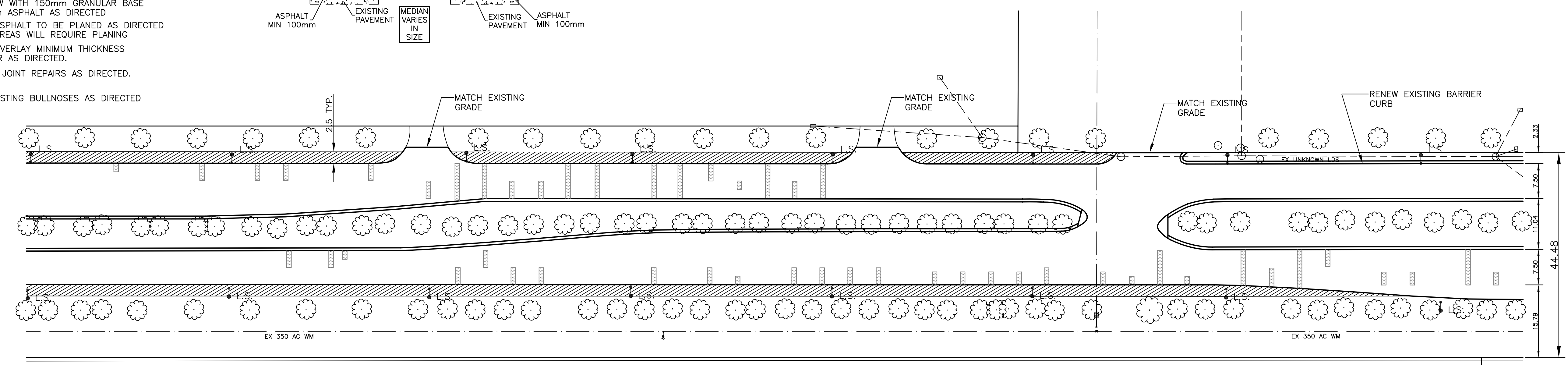


- NOTES:**
- REMOVE EX. BARRIER CURB, INSTALL NEW 600mm SPLASH STRIP WITH 150mm INTEGRAL BARRIER CURB
 - FINAL CURB REVEAL TO BE 150mm
 - EXISTING GRANULAR SHOULDERS TO BE EXCAVATED AND RENEW WITH 150mm GRANULAR BASE AND 75mm ASPHALT AS DIRECTED
 - EXISTING ASPHALT TO BE PLANED AS DIRECTED NOT ALL AREAS WILL REQUIRE PLANING
 - ASPHALT OVERLAY MINIMUM THICKNESS 100mm OR AS DIRECTED.
 - CONCRETE JOINT REPAIRS AS DIRECTED.
 - RENEW EXISTING BULLNOSES AS DIRECTED



CHANCELLOR MATHESON DR



LAMP STANDARDS TO BE RELOCATED BY OTHERS

METRIC
WHOLE NUMBERS INDICATE MILLIMETRES
DECIMALIZED NUMBERS INDICATE METRES

BENCHMARK:

— — — — —	WATERMAIN	— — — — —	HYDRO	— — — — —	150mm W.W.	WATERMAIN	— — — — —	150mm W.W.
⊕	HYDRANT	⊕	M.T.S.	— — — — —	300mm L.D.S.	VALVE	⊕	300mm L.D.S.
⊕	VALVE	⊕	CONCRETE	— — — — —	250mm W.W.S.	LAND DRAINAGE SEWER	— — — — —	300mm L.D.S.
— — — — —	LAND DRAINAGE SEWER	— — — — —	ASPHALT	— — — — —	— — — — —	WASTE WATER SEWER	— — — — —	250mm W.W.S.
— — — — —	WASTE WATER SEWER	— — — — —	PROPERTY LINE	— — — — —	— — — — —	CENTERLINE	— — — — —	— — — — —
○	MANHOLE	⊕	SURVEY BAR	— — — — —	— — — — —	NORTH & WEST GUTTER	— — — — —	— — — — —
□	CATCH BASIN	⊕	CURB STOP	— — — — —	— — — — —	SOUTH & EAST GUTTER	— — — — —	— — — — —
△	CURB INLET	▲	C.B. LEAD	— — — — —	— — — — —	— — — — —	— — — — —	— — — — —
+	JUNCTIONS	+	SIDEWALK	— — — — —	— — — — —	— — — — —	— — — — —	— — — — —
— — — — —	CULVERT	— — — — —	SIDEWALK RAMP	— — — — —	— — — — —	— — — — —	— — — — —	— — — — —
— — — — —	GAS	— — — — —	ELEVATIONS	— — — — —	— — — — —	— — — — —	— — — — —	— — — — —
— — — — —	EXISTING	— — — — —	LEGEND - PLAN	— — — — —	— — — — —	EXISTING	— — — — —	LEGEND - PROFILE
— — — — —	LEGEND - PLAN	— — — — —	PROPOSED	— — — — —	— — — — —	PROPOSED	— — — — —	PROPOSED

LOCATION APPROVED UNDERGROUND STRUCTURES

SUPV. U/G STRUCTURES DATE COMMITTEE

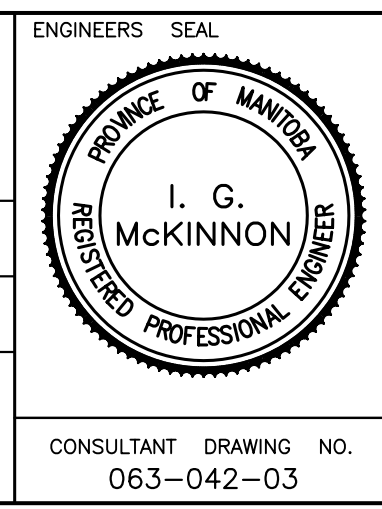
NOTE:
LOCATION OF UNDERGROUND STRUCTURES AS SHOWN ARE BASED ON THE BEST INFORMATION AVAILABLE BUT NO GUARANTEE IS GIVEN THAT ALL EXISTING UTILITIES ARE SHOWN OR THAT THE GIVEN LOCATIONS ARE EXACT. CONFIRMATION OF EXISTENCE AND EXACT LOCATION OF ALL SERVICES MUST BE OBTAINED FROM THE INDIVIDUAL UTILITIES BEFORE PROCEEDING WITH CONSTRUCTION.

B.M. ELEV.	
NO. REVISIONS	DATE BY

SEG ENGINEERING INC.
200 TACHE AVENUE WINNIPEG, MANITOBA (204) 233-2113

DESIGNED BY R.H. CHECKED BY S.M.
DRAWN BY R.H. APPROVED BY S.M.

HOR. SCALE: 1:500
VERT. SCALE: 1:10
DATE: APRIL 2006



THE CITY OF WINNIPEG
PUBLIC WORKS DEPARTMENT

2006 REGIONAL STREETS
CHANCELLOR MATHESON DRIVE

FROM STATION 6+50.00
TO STATION 9+75.00

CITY DRAWING NO. P-3267-03
SHEET 3 OF 5

266-2006

