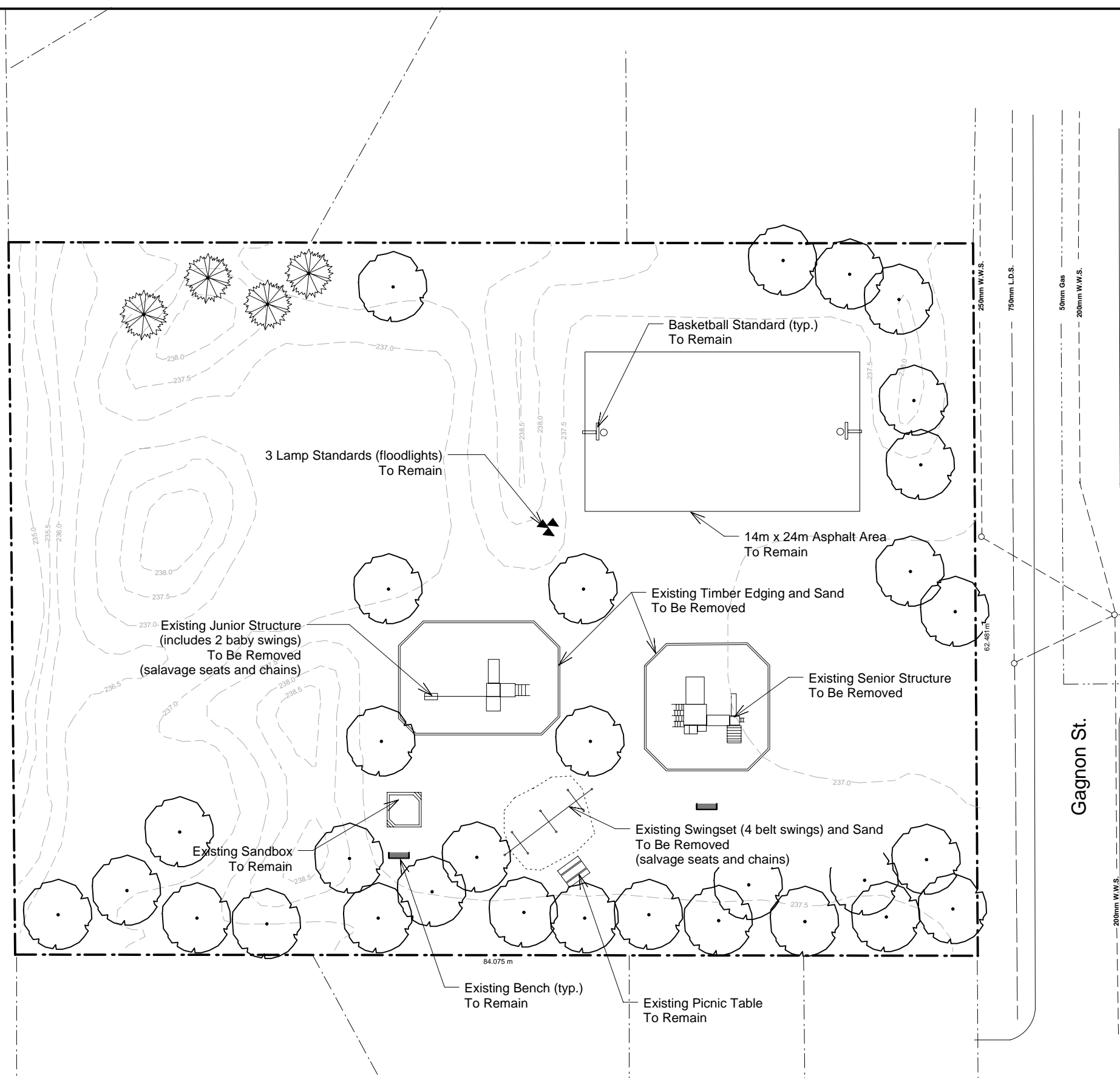


LOCATION PLAN
N.T.S.



Sansome Ave.

Gagnon St.

LOCATION OF UNDERGROUND STRUCTURES AS SHOWN ARE BASED ON THE BEST INFORMATION AVAILABLE BUT NO GUARANTEE IS GIVEN THAT ALL EXISTING UTILITIES ARE SHOWN OR THAT THE GIVEN LOCATIONS ARE EXACT. CONFIRMATION OF EXISTENCE AND EXACT LOCATION OF ALL SERVICES MUST BE OBTAINED FROM THE INDIVIDUAL UTILITIES BEFORE PROCEEDING WITH CONSTRUCTION.



THE CITY OF WINNIPEG
Planning, Property and Development Department
Planning and Land Use Division
Unit 15 - 30 Fort Street, Winnipeg, MB, (R3C 4X5)

DESIGNED BY	CH	CHECKED BY	SF	APPROVED BY	
DRAWN BY	CH	RELEASED FOR CONSTRUCTION			
HORIZ. SCALE	1 : 400				
VERT. SCALE					
DATE	June/06	MANAGER, PLANNING AND LAND USE DIVISION		DATE	

DRAWING TITLE	CAD DRAWING NO.
SUZANNE JEANNETTE PARK Existing Conditions	
	DRAWING NO. S.7- D