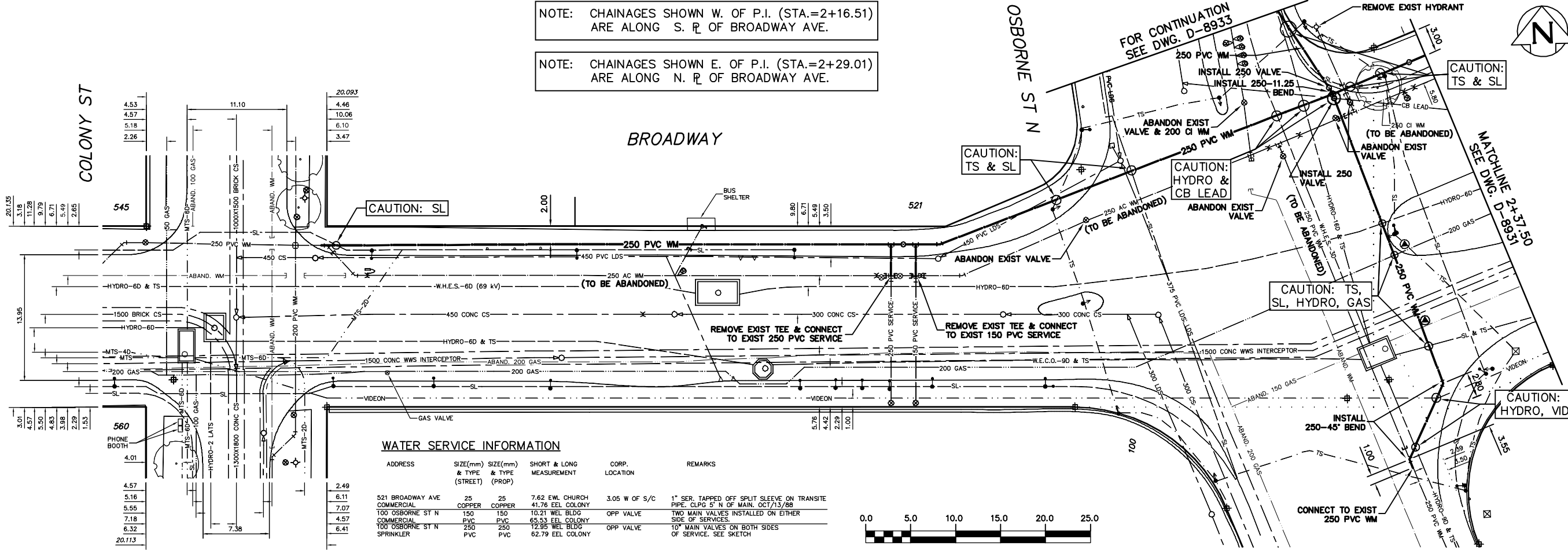


NOTE: CHAINAGES SHOWN W. OF P.I. (STA.=2+16.51) ARE ALONG S. R. OF BROADWAY AVE.

NOTE: CHAINAGES SHOWN E. OF P.I. (STA.=2+29.01) ARE ALONG N. R. OF BROADWAY AVE.

FOR CONSTRUCTION NOTES: SEE DRAWING D-8931



WATER SERVICE INFORMATION

ADDRESS	SIZE(mm) & TYPE (PROP)	SIZE(mm) & TYPE (EXIST)	SHORT & LONG MEASUREMENT	CORP. LOCATION	REMARKS
521 BROADWAY AVE COMMERCIAL	25 COPPER	25 COPPER	7.62 EWL CHURCH	3.05 W OF S/C	1" SER. TAPPED OFF SPLIT SLEEVE ON TRANSITE PIPE. CLPG 5' N OF MAIN. OCT/13/88
100 OSBORNE ST N COMMERCIAL	150 PVC	150 PVC	10.21 WEL BLDG	OPP VALVE	TWO MAIN VALVES INSTALLED ON EITHER SIDE OF SERVICES.
100 OSBORNE ST N SPRINKLER	250 PVC	250 PVC	12.95 WEL BLDG	OPP VALVE	10" MAIN VALVES ON BOTH SIDES OF SERVICE. SEE SKETCH
			62.79 EEL COLONY		

200 WM	WATERMAIN	200 WM	SL, HYDRO	150 WM	WATERMAIN	150 WM
+	HYDRANT	+	MTS	+	HYDRANT	+
o	VALVE	o	TRAFFIC SIGNALS	o	VALVE	o
525 LDS	LAND DRAINAGE SEWER	525 LDS	GAS	50 GAS	300 LDS	LAND DRAINAGE SEWER
375 WWS	WASTEWATER SEWER	375 WWS	SURVEY BAR	250 WWS	250 WWS	WASTEWATER SEWER
o	MANHOLE	o	FENCE	o	o	o
□	CATCH BASIN	□	POLE - HYDRO, MTS	o	o	o
∇	CURB INLET	∇	CURB STOP	o	o	o
△	REDUCER	△	GUY ANCHOR	o	o	o
X	COUPLING	X	LIGHT STANDARD	o	o	o
∞	ANODE	∞	TREE	o	o	o
EXISTING	LEGEND-PLAN	PROPOSED	EXISTING	LEGEND-PLAN	PROPOSED	EXISTING
EXISTING	LEGEND-PROFILE	PROPOSED	EXISTING	LEGEND-PROFILE	PROPOSED	EXISTING

LOCATION APPROVED UNDERGROUND STRUCTURES

SUPV. U/G STRUCTURES COMMITTEE

DATE

NOTE: LOCATION OF UNDERGROUND STRUCTURES AS SHOWN ARE BASED ON THE BEST INFORMATION AVAILABLE BUT NO GUARANTEE IS GIVEN THAT ALL EXISTING UTILITIES ARE SHOWN OR THAT THE GIVEN LOCATIONS ARE EXACT. CONFIRMATION OF EXISTENCE AND EXACT LOCATION OF ALL SERVICES MUST BE OBTAINED FROM THE INDIVIDUAL UTILITIES BEFORE PROCEEDING WITH CONSTRUCTION.

B.M. ELEV.

FIELD BOOK #:

POSTED TO LBS:

NO.	REVISIONS	DATE	BY
1			

CITY OF WINNIPEG WATER AND WASTE ENGINEERING DIVISION

DESIGNED BY: DEB

CHECKED BY: TW

DRAWN BY: CJH

APPROVED BY: KZ

HOR. SCALE: 1:250

VERTICAL: 1:50

RELEASED FOR CONSTRUCTION

DATE: 2005 03 18

ENGINEER'S SEAL

ORIGINAL SIGNED BY K.R. ZUREK 06/04/04

BID OPPORTUNITY: 242-2006

FILENAME: Broadway_Osborne.dwg

PLOT DATE: 2006 04 04

THE CITY OF WINNIPEG WATER AND WASTE DEPARTMENT

2006 WATERMAIN RENEWALS

BROADWAY
COLONY STREET TO
15.5 E OF E R OSBORNE STREET

SHEET 6 OF 13

CITY DRAWING NUMBER D-8930

METRIC
WHOLE NUMBERS INDICATE MILLIMETRES
DECIMALIZED NUMBERS INDICATE METRES

WARNING
IF POWER EQUIPMENT OR EXPLOSIVES ARE TO BE USED FOR EXCAVATION ON THIS PROJECT THE CONTRACTOR MUST:
1) NOTIFY THE GAS COMPANY OF THE PROPOSED LOCATION OF EXCAVATION.
2) TAKE PRECAUTION TO AVOID DAMAGE TO GAS COMPANY INSTALLATIONS.
SEE PROVINCIAL REGULATION 210/72 FOR DETAILS